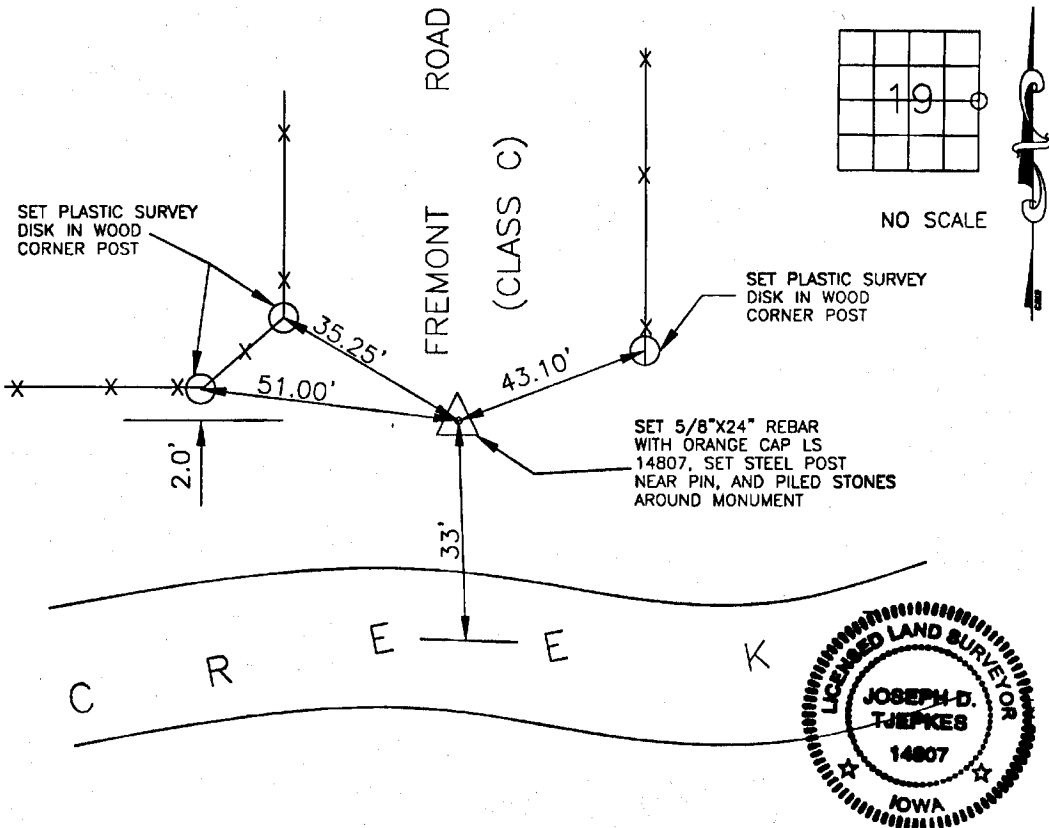


2000 2469  
 FILED  
 RECORDERS OFFICE  
 JONES COUNTY IOWA  
 00 AUG-8 PM 3:19  
 MARIE KRUTZFIELD  
 RECORDER *NO FEE*

PREPARED BY J.D. TJEPKES, LS, JONES COUNTY ENGINEER'S, OFFICE, 19501 HWY. 64, ANAMOSA, IOWA

# UNITED STATES PUBLIC LAND SURVEY CORNER CERTIFICATE

LAND SURVEY MONUMENTS SITUATED IN SECTION 19, TOWNSHIP 86  
 NORTH, RANGE 4 WEST OF THE 5TH P.M., JONES COUNTY, IOWA



*Castle Grove*

PREVIOUSLY RECORDED IN BOOK N/A, PAGE N/A  
 MONUMENT DESCRIPTION AND HOW ESTABLISHED \_\_\_\_\_  
SET 5/8"X24" REBAR WITH ORANGE CAP LS 14807 ON LINE AND ON SPLIT BETWEEN  
NORTHEAST CORNER SECTION 19 AND THE SOUTHEAST CORNER OF SECTION 19.  
TOWNSHIP 86 NORTH, RANGE 4 WEST, 5TH PRINCIPAL MERIDIAN, JONES COUNTY, IOWA.  
SET REFERENCE TIES AS INDICATED.

I hereby declare that this plat, survey or report was made by me or under my direct personal supervision and that I am a duly registered Land Surveyor under the laws of the State of Iowa.

Signed: *Joseph D. Tjepkes* 8.8.2000  
 Joseph D. Tjepkes L.S. Iowa Reg. No. 14807  
 My Registration Renewal Date is December 31, 2000

CORNERS TO BE INDEXED

CORNER	SECTION	TOWNSHIP	RANGE
EAST QUARTER	19	86 NORTH	4 WEST

JONES COUNTY ENGINEER  
 19501 HWY. 64,  
 ANAMOSA, IOWA