

1999 3226

FILED
RECORDERS OFFICE
JONES COUNTY IOWA

99 SEP -8 AM 11:06

MARIE KRUTZFIELD
RECORDER 6.00 P

PREPARED BY HALL & HALL ENGINEERS, INC. 209 29TH STREET N.E. CEDAR RAPIDS, IOWA 52402 (319) 362-9548

SECTION CORNER CERTIFICATE

OF
LAND SURVEY MONUMENTS SITUATED IN SECTION 19, TOWNSHIP 86 NORTH,
RANGE 4 WEST, OF THE FIFTH PRINCIPAL MERIDIAN, JONES COUNTY, IOWA.

PREVIOUSLY RECORDED IN BOOK _____ AT PAGE _____

REASON FOR PREPARING CERTIFICATE:

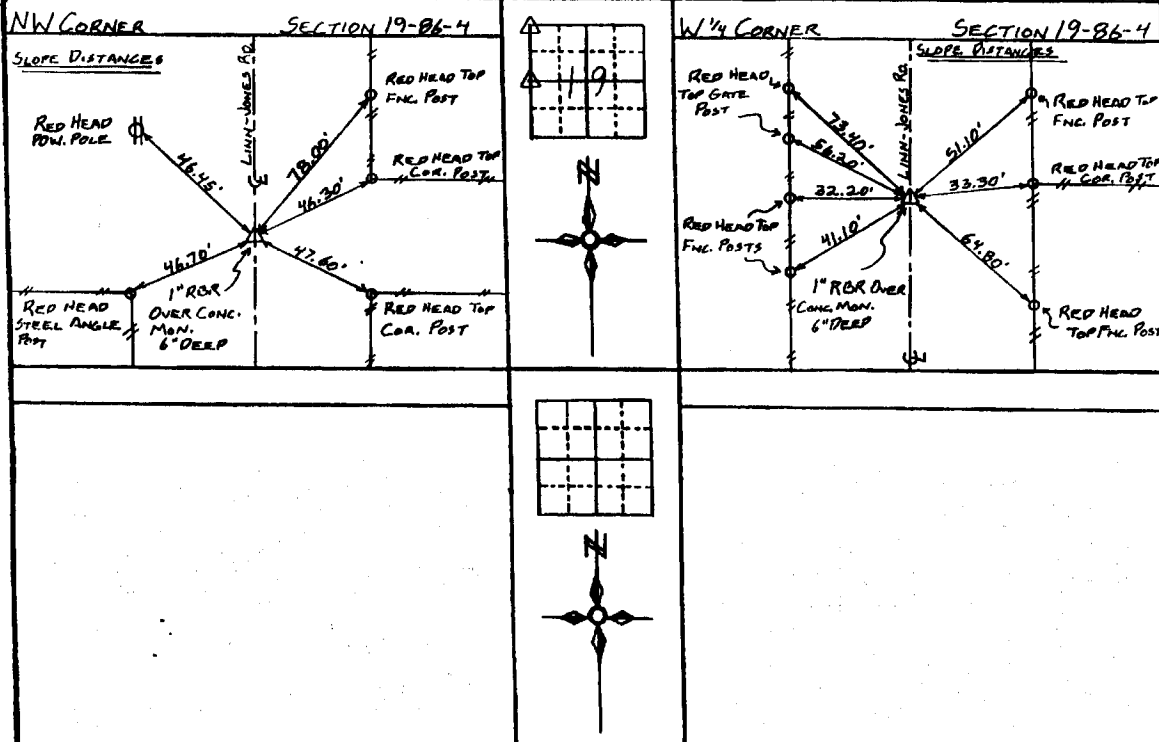
- A) THERE IS NO CERTIFICATE FOR THE CORNER ON FILE WITH THE RECORDER OF THE COUNTY IN WHICH THE CORNER IS LOCATED.
- B) CORNER POSITION DIFFERS FROM THAT SHOWN IN THE PUBLIC RECORDS OF THE COUNTY IN WHICH THE CORNER IS LOCATED.
- C) THE CORNER MONUMENT HAS BEEN REPLACED OR MODIFIED
- D) THE REFERENCE TIES REFERRED TO IN AN EXISTING PUBLIC RECORD ARE INCORRECT

MONUMENT DESCRIPTION AND REMARKS:

NW COR. SEC. 19-86-4: FOUND CONCRETE MONUMENT 1' DEEP, SET 1" x 6" REBAR OVER MONUMENT 6" DEEP
& LINN-JONES RD.

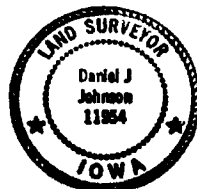
W 1/4 COR. SEC. 19-86-4: FOUND CONCRETE MONUMENT 3' DEEP, SET 1" x 30" REBAR OVER MONUMENT 6" DEEP
1.3' SOUTH OF FENCE EAST & LINN-JONES RD.

RECOVERY TIE DRAWING



I, DANIEL J. JOHNSON, - CERTIFY THAT THE CORNER LOCATION(S) SHOWN ON THIS RECORD WERE DETERMINED BY ME OR UNDER MY DIRECTION AND CONTROL AND THAT THIS U.S. PUBLIC LAND SURVEY MONUMENT RECORD IS CORRECT AND COMPLETE TO THE BEST OF MY KNOWLEDGE AND BELIEF

Daniel J. Johnson 9-8-99
DANIEL J. JOHNSON, L.S. NO. 11954 DATE



MY LICENSE RENEWAL DATE IS DECEMBER 31, 2000

LEGEND: Δ GOVERNMENT CORNER ● PROPERTY CORNER FOUND ○ 1/2" x 30" W/ L.S. CAP SET - - - - - EXISTING FENCE LINE ———— PROPERTY LINE	SHEET TITLE: U.S. PUBLIC LAND SURVEY RECORD	HALL AND HALL ENGINEERS, INC. 209 29TH STREET N.E. CEDAR RAPIDS, IOWA 52402 (319) 362-9548
	PROJECT TITLE: JONES COUNTY PROJECT	
DRAWN BY: JWP	CHECKED BY: DJJ	DATE: 1/13/96
SCALE: NONE	SHEET NO: 5256	

1915

FILED
RECORDERS OFFICE
JONES COUNTY IOWA

96 DEC 20 AM 10: 20

BOOK 415 PAGE 20
LINDA J. BENDIXEN
RECORDER

PREPARED BY HALL & HALL ENGINEERS, INC. 209 20TH STREET N.E. CEDAR RAPIDS, IOWA 52402 (319) 362-9548

SECTION CORNER CERTIFICATE

OF
LAND SURVEY MONUMENTS SITUATED IN SECTION 19, TOWNSHIP 86, NORTH,
RANGE 4, WEST, OF THE FIFTH PRINCIPAL MERIDIAN, JONES COUNTY, IOWA.

PREVIOUSLY RECORDED IN BOOK _____ AT PAGE _____

REASON FOR PREPARING CERTIFICATE:

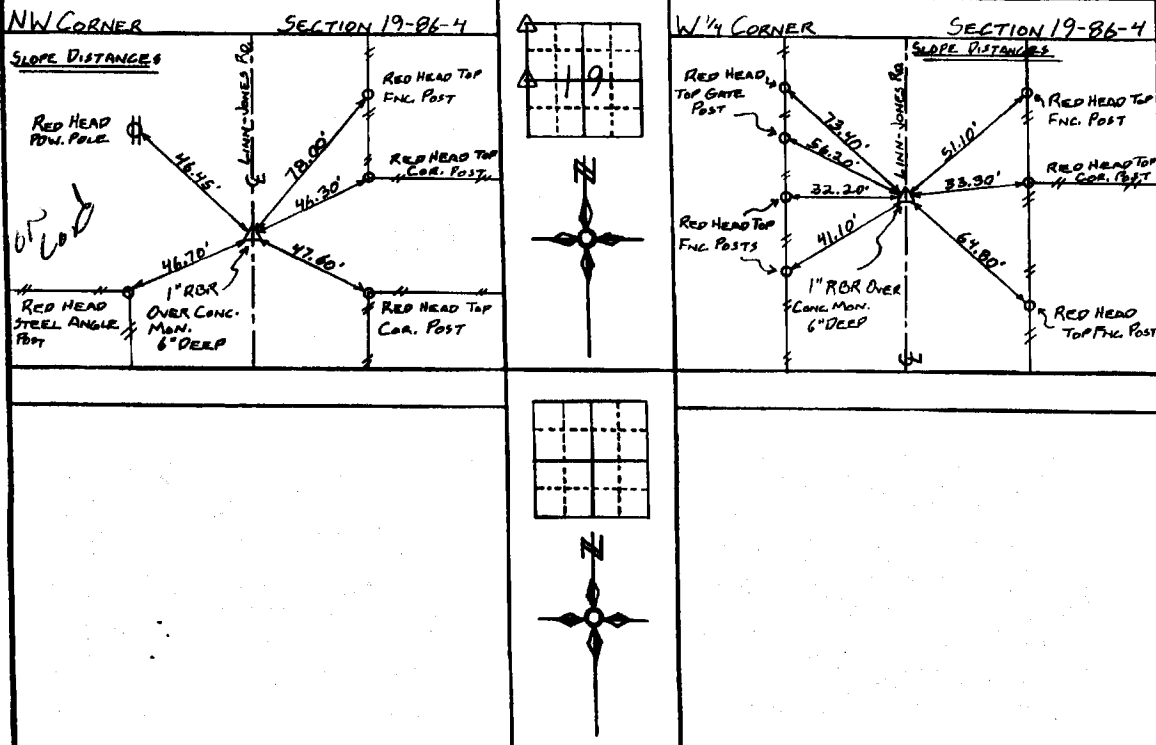
- A) THERE IS NO CERTIFICATE FOR THE CORNER ON FILE WITH THE RECORDER OF THE COUNTY IN WHICH THE CORNER IS LOCATED.
- B) CORNER POSITION DIFFERS FROM THAT SHOWN IN THE PUBLIC RECORDS OF THE COUNTY IN WHICH THE CORNER IS LOCATED.
- C) THE CORNER MONUMENT HAS BEEN REPLACED OR MODIFIED
- D) THE REFERENCE TIES REFERRED TO IN AN EXISTING PUBLIC RECORD ARE INCORRECT

MONUMENT DESCRIPTION AND REMARKS:

NW COR. SEC. 19-86-4: FOUND CONCRETE MONUMENT 1' DEEP, SET 1" x 6" REBAR OVER MONUMENT 6" DEEP & LINN-JONES RD.

W 1/4 COR. SEC. 19-86-4: FOUND CONCRETE MONUMENT 3' DEEP, SET 1" x 30" REBAR OVER MONUMENT 6" DEEP 1.3' SOUTH OF FENCE EAST & LINN-JONES RD.

RECOVERY TIE DRAWING



on cond

I, DANIEL J. JOHNSON, - CERTIFY THAT THE CORNER LOCATION(S) SHOWN ON THIS RECORD WERE DETERMINED BY ME OR UNDER MY DIRECTION AND CONTROL AND THAT THIS IS PUBLIC LAND SURVEY MONUMENT RECORD IS CORRECT AND COMPLETE TO THE BEST OF MY KNOWLEDGE AND BELIEF.

Daniel Johnson 12-19-96
DANIEL J. JOHNSON L.S. NO. 11954 DATE



MY LICENSE RENEWAL DATE IS DECEMBER 31, 1998

1/2" = 100' Δ GOVERNMENT CORNER ● PROPERTY CORNER FOUND ○ 1/2" 130' W/ L.S. CAP SET - - - - - EXISTING FENCE LINE ———— PROPERTY LINE	SHEET TITLE: U.S. PUBLIC LAND SURVEY RECORD	HALL AND HALL ENGINEERS, INC. 209 20TH STREET N.E. CEDAR RAPIDS, IOWA 52402 (319) 362-9548
	PROJECT TITLE: JONES COUNTY PROJECT	
DRAWN BY: JWP	CHECKED BY: DJJ	DATE: 1/13/96
SCALE: NONE	PROJECT NO: 5256	

UNITED STATES PUBLIC LAND SURVEY CORNER CERTIFICATE

OF

Land Survey Monuments situated in Section 18, Township 86 N, Range 4 W, of the Fifth Principal Meridian, Jones County, Iowa. Previously recorded in N/A in County Recorder's Office.

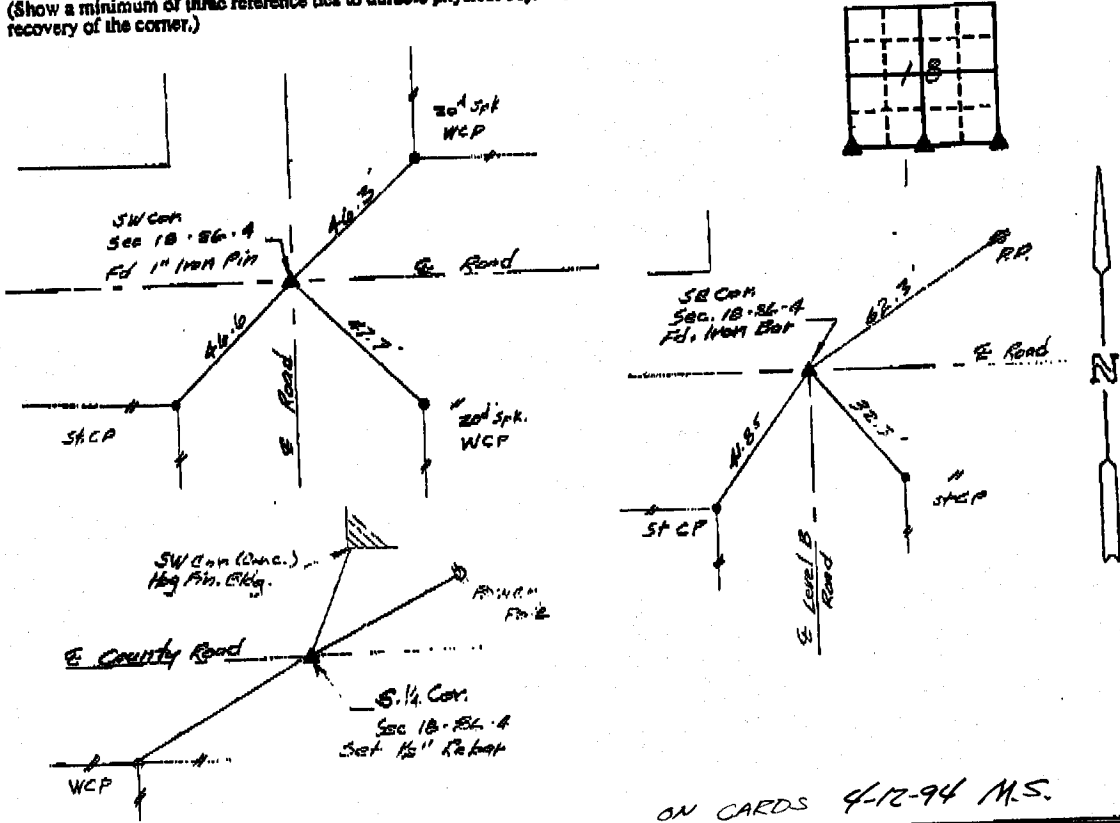
(Show reason for preparing this certificate, the evidence and detailed procedures used in establishing the corner positions and monumentation found or placed.)

Monument Description and Remarks: No corner tie certificates currently on file.

- SW Corner Sec 18 - Dug Ed 1" Iron Pin 2-3" deep (Retied)
- SE Corner Sec 18 - Dug Ed. 1/2" x 1" Iron Bar 5" long 15" deep.
- S. 1/4 Corner Sec 18 - Set 1/2" Rebar @ rd ROW and proportionate E-W

PLAN - VIEW

(Show a minimum of three reference ties to durable physical objects, relevant monuments and physical conditions that will enable recovery of the corner.)



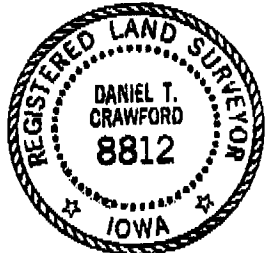
ON CARDS 4-12-94 M.S.

I hereby certify that the survey work was completed and this certificate was prepared by me or under my direct personal supervision and that I am a duly registered land surveyor under the laws of the state of Iowa.

Signature: Daniel T. Crawford
Name typed or printed: Daniel T. Crawford, R.L.S.

Date: Jan 27, 1994 Reg. No. 8812

SEAL



Corners	List Corners to be Indexed		
	Section	Twp	Range
SW	18	86 N	4 W
SE	18	86 N	4 W
S 1/4	18	86 N	4 W