

06 JUN 21 PH 3:16

MAKIE KRUTZFIELD
 RECORDER 7:00 PM

Prepared by Vn. Burger LandSurveyors 510 3rd Street West Court, Worthington, Iowa Phone 563 - 855 2928

UNITED STATES PUBLIC LAND SURVEY CORNER CERTIFICATE

Land Survey Monuments situated in Section 1, Township 86N, Range 4W, of the Fifth Principal Meridian, Jones County, Iowa. Previously recorded in N/A in the Office of the County Recorder

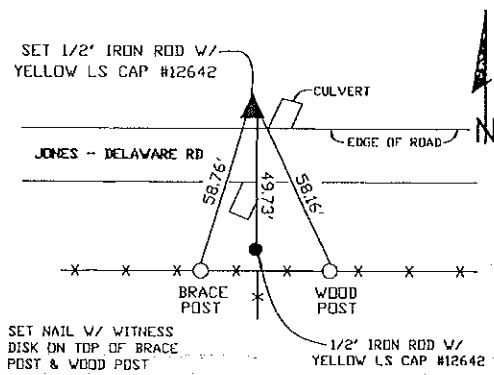
Monument Description and Remarks: (No Corner Certificates Found at the County Recorders Office)

NW CORNER NE1/4 NW1/4 - SET 1/2" IRON ROD W/ YELLOW LS CAP #12642 - SET ON LINE BETWEEN THE NW CORNER AND THE N1/4 CORNER AND USED FENCELINE EVIDENCE TO THE SOUTH

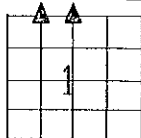
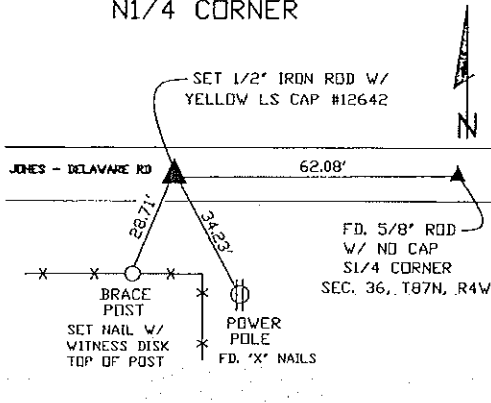
N1/4 CORNER - SET 1/2" IRON ROD W/ YELLOW LS CAP #12642 - SET ON LINE BETWEEN THE S1/4 CORNER OF SEC. 36, T87N, R4W AND THE NW CORNER AND SET MIDWAY BETWEEN THE NW CORNER AND THE NE CORNER

PLAN VIEW

NW CORNER NE1/4 NW1/4



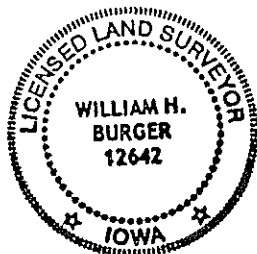
N1/4 CORNER



SEC. 1 TWP. 86N RANGE 4W

CORNERS TO BE INDEXED

NW CORNER NE1/4 NW1/4	1	86N	4W
N1/4 CORNER	1	86N	4W



I hereby certify that this land surveying document was prepared and related survey work was performed by me or under my direct personal supervision and that I am a duly licensed Land Surveyor under the laws of the State of Iowa.

William H. Burger 6/21/06
 William H. Burger Date

License number 12642
 My license renewal date is December 31, 2006
 Pages or Sheets covered by this seal: Sheet 1 of 1