

Instrument #: 2025-1254
05/29/2025 08:37:28 AM Total Pages: 1
ZSC SECTION CORNER CERTIFICATE
Recording Fee: \$7.00 Transfer Tax: \$0
Sheri L. Jones, Recorder, Jones County Iowa



PREPARED BY: MICHAEL J. WEBER, WEBER SURVEYING, LLC, 26789 46TH AVE, BERNARD, IA 52032 (563) 879-4173

UNITED STATES PUBLIC LAND SURVEY CORNER CERTIFICATE OF
LAND SURVEY MONUMENTS SITUATED IN SECTION 6, TOWNSHIP 86 NORTH, RANGE 3 WEST
OF THE FIFTH PRINCIPAL MERIDIAN, JONES COUNTY, IOWA.
PREVIOUSLY RECORDED DDC. NO. 2012 0329

(Book, page, document number, etc)

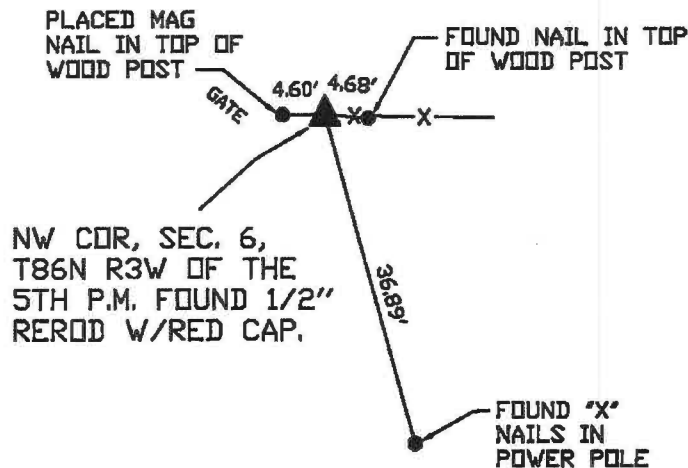
(Show reason for preparing this certificate, the evidence and detailed procedures used in establishing the corner positions and nonumentation found or placed)

Monument Description and Remarks:

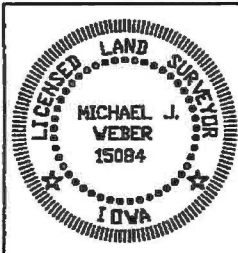
-NW COR, SEC. 6, T86N R3W OF THE 5TH P.M. FOUND 1/2" REROD W/RED CAP.
PREVIOUSLY RECORDED IN DDC. NO. 2012 0329. INDEXED AS THE NE COR., SEC. 1
T86N R4W

(Show a minimum of three reference ties to durable physical objects, relevant monuments and physical conditions that will enable recovery of the corner)

PLAN - VIEW



List Corners to be Indexed		
Corner	Sec	Twp Range
NW COR.,	6	86N-3W
DWG. 25051		



I HEREBY CERTIFY THAT THIS LAND SURVEYING DOCUMENT WAS
PREPARED AND THE RELATED SURVEY WORK WAS PERFORMED BY ME OR
UNDER MY DIRECT PERSONAL SUPERVISION AND THAT I AM A DULY
LICENSED LAND SURVEYOR UNDER THE LAWS OF THE STATE OF IOWA.
Michael J. Weber *May 28, 2025*
MICHAEL J. WEBER (DATE)
LICENSE NUMBER 15084
MY LICENSE RENEWAL DATE IS DECEMBER 31, 2025
SHEETS COVERED BY THIS SEAL: *This Sheet*

Jones County Marie Krutzfield Recorder
Fee Book 2012 0329
02/08/2012 60946AM # Pages 1
ZSC SEC COR CERT
Total Fees: \$7.00

TeKIPPE ENGINEERING, P.C., 1919 210th Street, P.O. Box 357, Manchester, Iowa 52057 Phone (563) 927-2060

UNITED STATES PUBLIC LAND SURVEY CORNER CERTIFICATE

OF

Land Survey Monuments situated in Section 1, Township 86 North, Range 4 West of the Fifth Principal Meridian, Jones County, Iowa.

Previously recorded in (1) Bk. 2004, Pg. 983 (2) Bk. 418, Pg. 248 in County Recorder's Office.
(book, page, document number, etc.)

(Show reason for preparing this certificate, the evidence and detailed procedures used in establishing the corner positions and monumentation found or placed.)

Monument Description and Remarks: (1) NE Corner of Section 1-T86N-R4W: Found 1/2" Rebar w/Red Plastic Cap number was illegible. Retied because all of the existing ties have been destroyed.

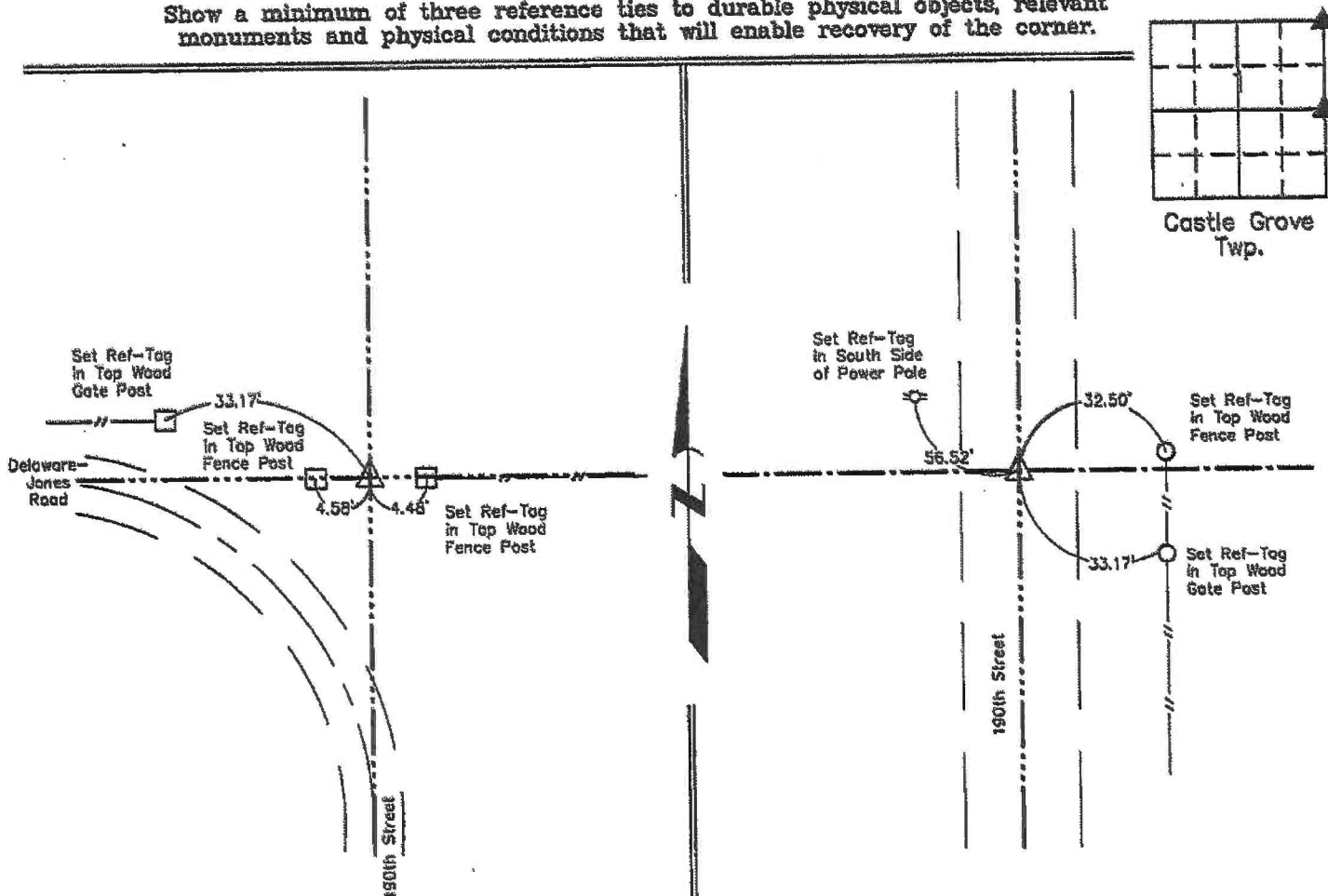
(2) E 1/4 Corner of Section 1-T86N-R4W: Set 1/2" rebar w/2" Alum Cap PLS 7060 based upon existing ties.

PLAN VIEW

Project Number 122005LS

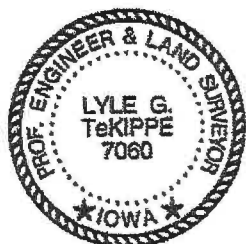
Field Book: Jones / Monticello No. 2, Pages 38-39

Show a minimum of three reference ties to durable physical objects, relevant monuments and physical conditions that will enable recovery of the corner.



(1) NE Corner of Section 1-T86N-R4W
Found 1/2" Rebar w/RPC

(2) E 1/4 Corner of Section 1-T86N-R4W
Set 1/2" Rebar w/2" Aluminum Cap PLS 7060



I hereby certify that this land surveying document was prepared and the related survey work was performed by me or under my direct personal supervision and that I am a duly licensed Land Surveyor under the laws of the State of Iowa.

Lyle G. TeKippe 2-7-12
Lyle G. TeKippe, P.E. & P.L.S. Date
License Number 7060
My license renewal date is December 31, 2012.
Sheets covered by this seal: This sheet only

List Corners to be Indexed

Corners	Section	Twp.	Range
NE	1	86N	4W
E 1/4	1	86N	4W

UNITED STATES PUBLIC LAND SURVEY CORNER CERTIFICATE

OF

Land Survey Monuments situated in Section One (1), Township 86 North, Range Four (4) West, of the Fifth Principal Meridian, Jones County, Iowa.
Previously recorded in _____ in County Recorder's Office.

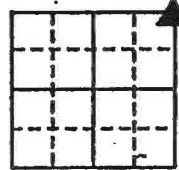
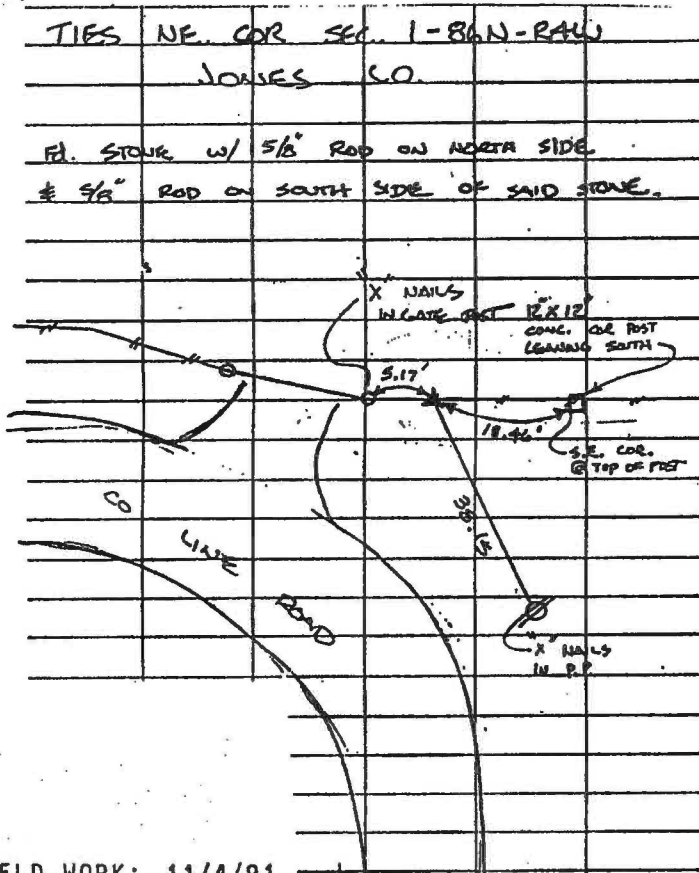
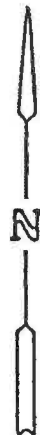
(book, page, document number, etc.)

(Show reason for preparing this certificate, the evidence and detailed procedures used in establishing the corner positions and monumentation found or placed.)

Monument Description and Remarks: No certificate recorded in the Office of the Jones County Recorder. Found stone with 5/8" dia. iron rod on North and South side of stone.

PLAN - VIEW

(Show a minimum of three reference ties to durable physical objects, relevant monuments and physical conditions that will enable recovery of the corner.)

SECTION 1
T86N; R4WON
CO

DATE OF FIELD WORK: 11/4/91

TSE NO: 91-64

I hereby certify that the survey work was completed and this certificate was prepared by me or under my direct personal supervision and that I am a duly registered land surveyor under the laws of the state of Iowa.

Signature: J. David GibbsName typed or printed: J. David GibbsDate: 11/27/91 Reg. No. 8419

Corners	List Corners to be Indexed Section	Twp	Range
NE	1	86N	4W

SEAL



864012-112791.

NE Sec.
1