

COPY

FEE BOOK: 2009 0842 3/9/2009 12:08 PM
 REC FEES: No Fee
 PAGES: 1

Marie Krutzfield, Recorder
 Jones County, Iowa

PREPARED BY

CLARENCE J. WALTON, JONES COUNTY ENGINEER'S OFFICE, 19501 HWY. 64, ANAMOSA, IOWA, 52205 (319) 462-3785

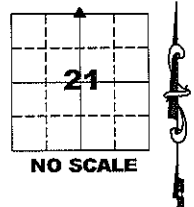
UNITED STATES PUBLIC LAND SURVEY CORNER CERTIFICATE

LAND SURVEY MONUMENTS SITUATED IN SECTION 21, TOWNSHIP 86 NORTH,
 RANGE 4 WEST OF THE 5TH PRINCIPAL MERIDIAN, JONES COUNTY, IOWA.

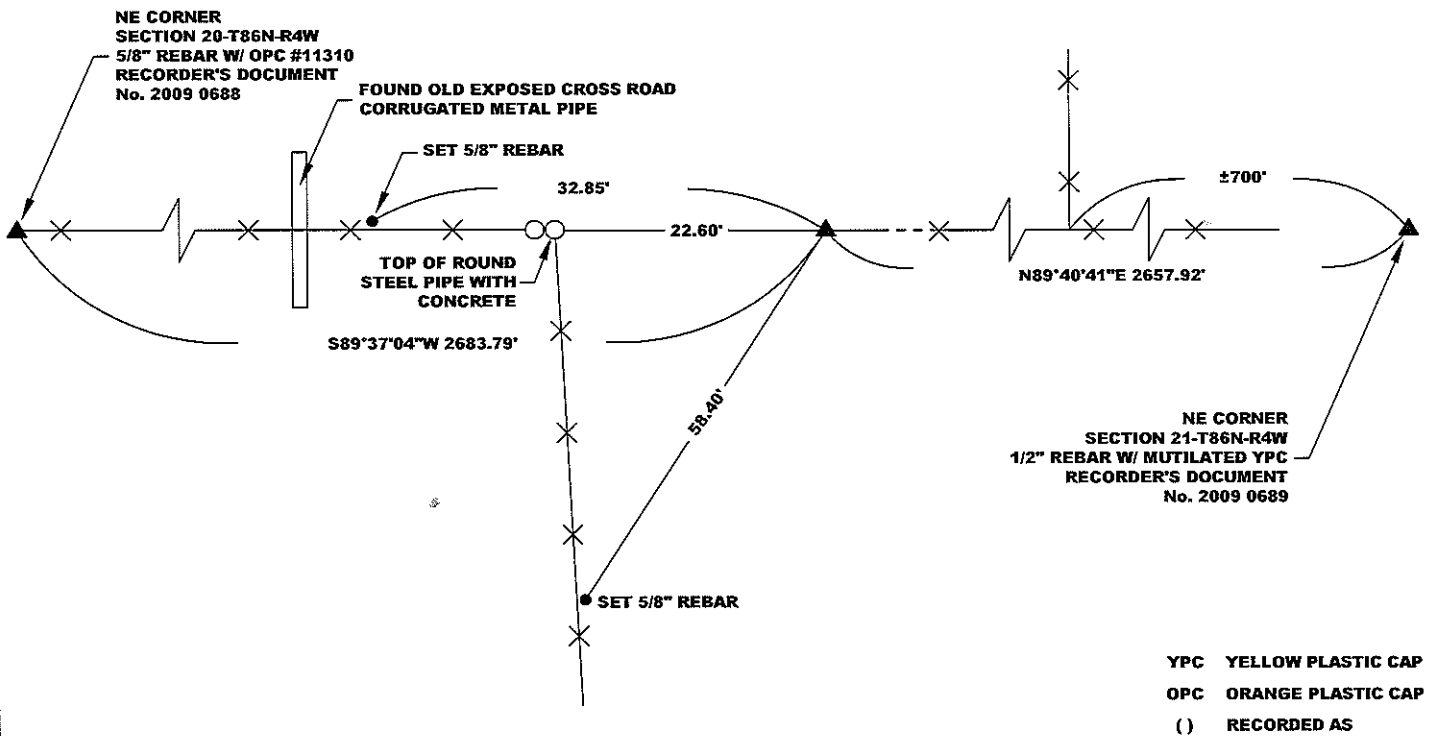
OFFICE FILE NO.

STATE PLANE COORDINATE
 NAD 83 IOWA NORTH
 N 3562818.00
 E 5512495.08

CORNER SECTION TOWNSHIP RANGE
 N 1/4 CORNER 21 T86N R4W



NOTE:
 THE STATE PLANE COORDINATE AS INDICATED IS FOR CONVENIENCE ONLY.
 THE TIES AS SHOWN SHOULD BE USED TO REPLACE THE CORNER, IF
 DESTROYED



YPC YELLOW PLASTIC CAP
 OPC ORANGE PLASTIC CAP
 () RECORDED AS

PREVIOUSLY RECORDED IN RECORDER'S DOCUMENT N/A

MONUMENT DESCRIPTION AND HOW ESTABLISHED FOUND LIMESTONE ± 12" BELOW SURFACE W/ TWO REBAR DRIVEN BESIDE STONE FOR DETECTION PURPOSES ONLY AS PER JONES COUNTY CORNER TIES. DROVE TWO MORE REBAR BESIDE STONE FOR ADDITIONAL DETECTION PURPOSES AND SET STEEL FENCE POST W/ YELLOW "SURVEY MARKER" SIGN AS A WITNESS. COUNTY ROAD RECORDS SHOW THAT 220TH STREET ONCE PASSED THROUGH ON THE NORTH LINE OF SECTION 21-T86N-R4W, HAVING A RIGHT-OF-WAY WIDTH OF 40 FEET AND CENTERED ON THE NORTH LINE OF SAID SECTION 21. A CROSS-ROAD CORRUGATED METAL PIPE THAT IS CENTERED ON AN EXISTING EAST-WEST FENCE IS OF IMPORTANCE AS EVIDENCE TO THE LOCATION OF THE NE CORNER OF SAID SECTION 21. THERE IS A DIFFERENCE OF OPINION (AMOUNTING TO 20 FEET IN A NORTH-SOUTH DIRECTION) AS TO THE WHERE THE NE CORNER OF SAID SECTION 21 SHOULD BE. PLEASE REFER TO CORNER TIES RECORDED IN BOOK 389, PAGE 286, IN BOOK 426, PAGE 25, AND A CORNER CERTIFICATE FOR THE NE CORNER OF SAID SECTION 21 THAT WILL BE RECORDED AT A SLIGHTLY LATER DATE AS THIS CERTIFICATE

FIELD BOOK 377, PAGE 147. DATE OF SURVEY: 3/05/09



I hereby certify that this land surveying document and the related survey work was performed by me or under my direct personal supervision and that I am a duly registered Land Surveyor under the laws of the State of Iowa.

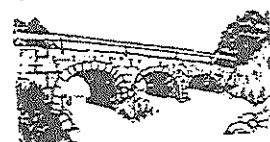
Signed: *Clarence J. Walton* 3/9/09
 Clarence J. Walton, L.S.
 My Registration Renewal Date is December 31, 2009
 Iowa License Number 11310
 Pages or sheets covered by this seal: 1 of 1.

- A. THERE IS NO CERTIFICATE FOR THE CORNER ON FILE WITH THE RECORDER OF THE COUNTY IN WHICH THE CORNER IS LOCATED.
- B. THE CORNER MONUMENT HAS BEEN REPLACED OR MODIFIED.
- C. THE SURVEYOR IN RESPONSIBLE CHARGE OF THE LAND SURVEYING ACCEPTS A CORNER POSITION THAT DIFFERS FROM THAT SHOWN IN THE PUBLIC RECORDS OF THE COUNTY IN WHICH THE CORNER IS LOCATED.
- D. THE REFERENCE TIES REFERRED TO IN AN EXISTING PUBLIC RECORD NO LONGER EXIST.

CORNERS TO BE INDEXED

CORNER	SECTION	TOWNSHIP	RANGE
N 1/4	21	86N	4W
S 1/4	16	86N	4W

JONES COUNTY ENGINEER'S OFFICE



19501 HWY. 64, ANAMOSA, IOWA 52205
 (319) 462-3785

THIS IS NOT A CERTIFICATION

H

JONES COUNTY ENGINEER'S OFFICE, 19501 HWY. 64, ANAMOSA, IOWA, 52205 (319)462-3785

UNITED STATES PUBLIC LAND SURVEY CORNER CERTIFICATE

LAND SURVEY MONUMENTS SITUATED IN SECTION 21, TOWNSHIP 86 NORTH, RANGE 4 WEST OF THE 5TH P.M., JONES COUNTY, IOWA

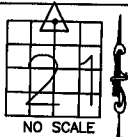
CORNERS TO BE INDEXED

CORNER SECTION TOWNSHIP RANGE
N-QUARTER 21 86N 4W

OFFICE FILE NO.

86421c_082504.tif

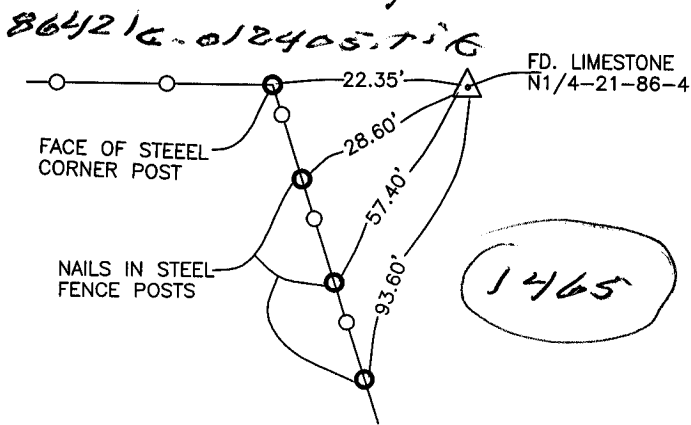
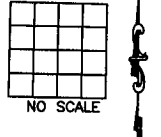
REF:
COUNTY SURVEY CREW.
POSTEL-WOOD-POWELL-BARTLE
BOOK 283, PAGE 7



CORNERS TO BE INDEXED

CORNER SECTION TOWNSHIP RANGE

OFFICE FILE NO.



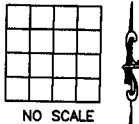
PREVIOUSLY RECORDED IN BOOK _____, PAGE _____
MONUMENT DESCRIPTION AND HOW ESTABLISHED FOUND
LIMESTONE 10" BELOW GROUND. SET TWO-1/2"X22" REBARS ALONGSIDE
STONE. SET REFERENCE POINTS AND TIED AS INDICATED. NORTH
QUARTER CORNER SECTION 21, TOWNSHIP 86 NORTH, RANGE 4 WEST
OF THE 5TH PRINCIPAL MERIDIAN, JONES COUNTY, IOWA.

PREVIOUSLY RECORDED IN BOOK _____, PAGE _____
MONUMENT DESCRIPTION AND HOW ESTABLISHED _____

CORNERS TO BE INDEXED

CORNER SECTION TOWNSHIP RANGE

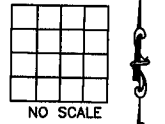
OFFICE FILE NO.



CORNERS TO BE INDEXED

CORNER SECTION TOWNSHIP RANGE

OFFICE FILE NO.



PREVIOUSLY RECORDED IN BOOK _____, PAGE _____
MONUMENT DESCRIPTION AND HOW ESTABLISHED _____

PREVIOUSLY RECORDED IN BOOK _____, PAGE _____
MONUMENT DESCRIPTION AND HOW ESTABLISHED _____

~~I hereby declare that this plat, survey or report was made by me or under my direct personal supervision and that I am a duly registered Land Surveyor under the laws of the State of Iowa.~~

Signed:

SEAL

JONES COUNTY ENGINEER'S OFFICE

19501 HWY. 64,
ANAMOSA, IOWA,
52205 (319)462-3785