

FOR RECORDER USE ONLY

2005 0365
FILED
RECORDERS OFFICE
JONES COUNTY IOWA

05 JAN 31 AM 10:45

MARIE KRUTZFIELD
RECORDER 7.00 pd

PREPARED BY: MMS CONSULTANTS INC. - 1917 S. GILBERT STREET - IOWA CITY, IOWA, 52240 - (319)351-8282

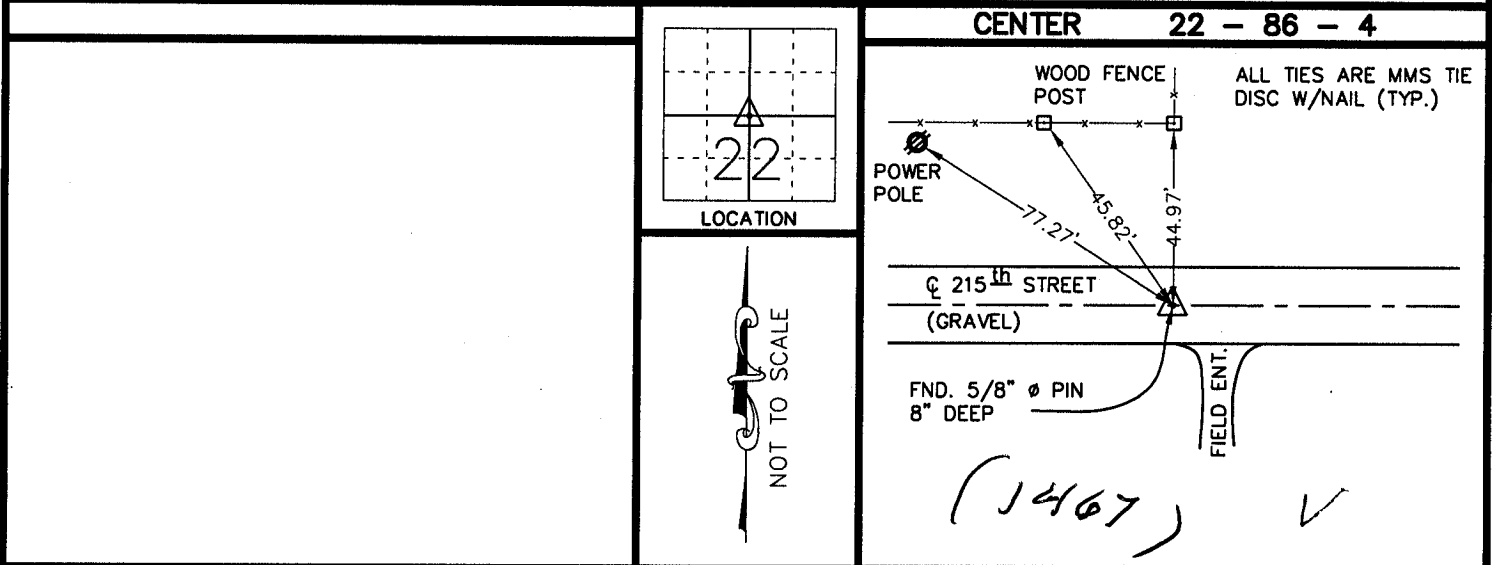
U.S. PUBLIC LAND SURVEY CORNER CERTIFICATE

FOR LAND SURVEY MONUMENTS SITUATED IN SECTION 22, TOWNSHIP 86 NORTH, RANGE 4 WEST, OF THE FIFTH PRINCIPAL MERIDIAN, JONES COUNTY, IOWA

REASON FOR PREPARING CERTIFICATE:

- A) THERE IS NO CERTIFICATE FOR THE CORNER ON FILE WITH THE RECORDER.
- B) CORNER FOUND DIFFERS FROM PREVIOUSLY RECORDED CERTIFICATE RECORDED IN BOOK ____, AT PAGE ____.

RECOVERY TIE DRAWING

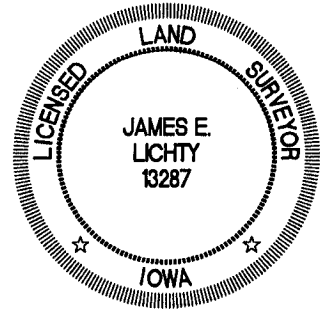


MONUMENT DESCRIPTION AND REMARKS :

MONUMENT DESCRIPTION AND REMARKS :
 FOUND 5/8" ϕ PIN, 8" DEEP, ACCORDING TO TIES FROM THE JONES COUNTY ENGINEER'S OFFICE.
 86422m-012705

I HEREBY CERTIFY THAT THE CORNER LOCATION(S) SHOWN ON THIS RECORD WERE DETERMINED BY ME OR UNDER MY DIRECT PERSONAL SUPERVISION AND THAT THIS U.S. PUBLIC LAND SURVEY MONUMENT RECORD IS CORRECT AND COMPLETE TO THE BEST OF MY KNOWLEDGE AND BELIEF.

James E. Lichty
 JAMES E. LICHTY, L&S Iowa License No. 13287 DATE 1/27/05
 MY BIENNIAL RENEWAL DATE IS DECEMBER 31, 2006



| | | | | | | |
|--|---|--|---|--|--|--|
| L DZ/MG/R/L <input checked="" type="checkbox"/> GOVERNMENT CORNER <input type="checkbox"/> 5/8" TIE PIN SET --- CENTERLINE -x-x- EXISTING FENCE LINE - - - - R.O.W. LINE | SHEET TITLE: U.S. PUBLIC LAND SURVEY CORNER CERTIFICATE | | MMS CONSULTANTS, INC. Iowa City, Iowa 319-351-8282 | | | |
| | PROJECT TITLE: RICHARD WOLKEN JONES COUNTY, IOWA | | DRAWN BY: RLS CHECKED BY: RLS APPROVED BY: JEL DATE: 1-26-05 SCALE: 1 FIELD BOOK: 715 PROJECT NO.: 7060-002 | | | |

J

THIS IS NOT A CERTIFICATION

I

JONES COUNTY ENGINEER'S OFFICE, 19501 HWY. 64, ANAMOSA, IOWA, 52205 (319)462-3785

UNITED STATES PUBLIC LAND SURVEY CORNER CERTIFICATE

LAND SURVEY MONUMENTS SITUATED IN SECTION 22, TOWNSHIP 86 NORTH, RANGE 4 WEST OF THE 5TH P.M., JONES COUNTY, IOWA

CORNERS TO BE INDEXED

| CORNER | SECTION | TOWNSHIP | RANGE |
|-----------|---------|----------|-------|
| E-QUARTER | 22 | 86N | 4W |

OFFICE FILE NO. 86422o_082504.tif

REF: JONES COUNTY SURVEY CREW. POSTEL-POWELL-TARBOX 10-8-79 BOOK 283, PAGE 4.

Diagram details: NAIL IN BRACE POST, LANE, IRON PIN OVER LIMESTONE, E1/4-22-86-4, 44.80', SLOPE MEASURED, 34.53', NAIL TOP FENCE POST, CL COUNTY RD. 215TH ST., STONE ON LINE WITH FENCE TO NORTH, 63.82', 210TH AVENUE, CL COUNTY RD., 83.53', NAIL IN FENCE POST, NAIL IN FENCE POST.

1466

PREVIOUSLY RECORDED IN BOOK _____, PAGE _____
MONUMENT DESCRIPTION AND HOW ESTABLISHED FOUND LIMESTONE 36" BELOW SURFACE WITH TWO IRON PINS ABOVE. RESET PINS TO WITHIN 4" BELOW SURFACE AND TIED OUT AS INDICATED. EAST QUARTER CORNER SECTION 22, TOWNSHIP 86 NORTH, RANGE 4 WEST OF THE 5H PRINCIPAL MERIDIAN, JONES COUNTY, IOWA.

CORNERS TO BE INDEXED

| CORNER | SECTION | TOWNSHIP | RANGE |
|--------|---------|----------|-------|
| CENTER | 22 | 86N | 4W |

OFFICE FILE NO. 86422m_082504.tif

REF: JONES COUNTY SURVEY CREW. POSTEL-BORTLE-TARBOX BOOK 283, PAGE 72 10-14-80

THIS WAS A RETIE IN 1980. SEE BELOW.

Diagram details: NAIL IN STEEL POST, NAIL IN COR. POST, 45.38', IRON PIN CENTER-22-86-4, NAIL IN PWR. POLE, 77.60', 56.85', CL COUNTY ROAD 215TH STREET.

1467

86422m_012405.tif ✓

PREVIOUSLY RECORDED IN BOOK _____, PAGE _____
MONUMENT DESCRIPTION AND HOW ESTABLISHED COUNTY CREW IN 1979 FOUND 15"x15"x18" STONE DOWN 36" WITH IRON PIN ABOVE. RESET IRON PIN ABOVE. SET REFERENCE POINTS AND TIED AS INDICATED STONE ON LINE WITH FENCE TO NORTH. CENTER SECTION 22, TOWNSHIP 86 NORTH, RANGE 4 WEST OF THE 5TH PRINCIPAL MERIDIAN, JONES COUNTY, IOWA. (TIES AS INDICATED FROM 10-14-80)

CORNERS TO BE INDEXED

| CORNER | SECTION | TOWNSHIP | RANGE |
|--------|---------|----------|-------|
| | | | |

OFFICE FILE NO. _____

PREVIOUSLY RECORDED IN BOOK _____, PAGE _____
MONUMENT DESCRIPTION AND HOW ESTABLISHED _____

CORNERS TO BE INDEXED

| CORNER | SECTION | TOWNSHIP | RANGE |
|--------|---------|----------|-------|
| | | | |

OFFICE FILE NO. _____

PREVIOUSLY RECORDED IN BOOK _____, PAGE _____
MONUMENT DESCRIPTION AND HOW ESTABLISHED _____

~~I hereby declare that this plat, survey or report was made by me or under my direct personal supervision and that I am a duly registered Land Surveyor under the laws of the State of Iowa.~~

Signed: _____

SEAL

JONES COUNTY ENGINEER'S OFFICE

19501 HWY. 64,
ANAMOSA, IOWA,
52205 (319)462-3785