

2006 0255
 FILED
 RECORDERS OFFICE
 JONES COUNTY IOWA
 06 JAN 19 AM 10:51
 MARIE KRUTZFIELD
 RECORDER 7.00 Pd

Prepared by Wm. Burger LandSurveyors 510 3rd Street West Court, Worthington, Iowa Phone 563 - 855 2028

UNITED STATES PUBLIC LAND SURVEY CORNER CERTIFICATE

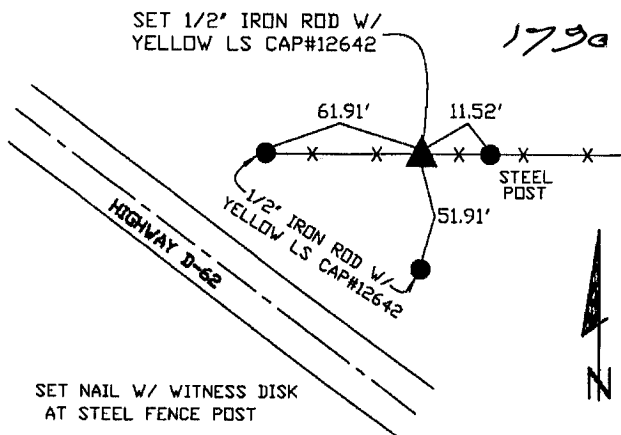
Land Survey Monuments situated in Section 24, Township 86N, Range 4W, of the Fifth Principal Meridian, Jones County, Iowa. Previously recorded in N/A in the Office of the County Recorder

Monument Description and Remarks: (No Corner Certificates found at the County Recorders Office)

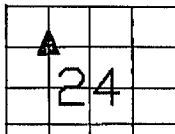
NW CORNER SE1/4 NW1/4 - SET 1/2" IRON ROD W/ YELLOW LS CAP #12642 - SET ON LINE BETWEEN THE NE CORNER NW1/4 NW1/4 AND THE SE CORNER SW1/4 NW1/4 AND USED EAST-WEST FENCELINE EVIDENCE TO ESTABLISH THIS CORNER

PLAN VIEW

NW CORNER SE1/4 NW1/4



86424g-211606.tif



CORNERS TO BE INDEXED

NW CORNER SE1/4 NW1/4 24 86N 4W