

2006 0254

FILED
RECORDERS OFFICE
JONES COUNTY IOWA

06 JAN 19 AM 10:50

MARIE KRUTZFIELD
RECORDER 7.00 Pd

Prepared by Wm. Burger Land Surveyors

510 3rd Street West Court, Worthington, Iowa

Phone 563 - 855 2028

UNITED STATES PUBLIC LAND SURVEY CORNER CERTIFICATE

Land Survey Monuments situated in Section 24, Township 86N, Range 4W, of the Fifth Principal Meridian, Jones County, Iowa. Previously recorded in N/A in the Office of the County Recorder

Monument Description and Remarks: (No Corner Certificates found at the County Recorders Office)

CENTER OF SECTION - FOUND 1/2" IRON ROD W/ YELLOW CAP #11310

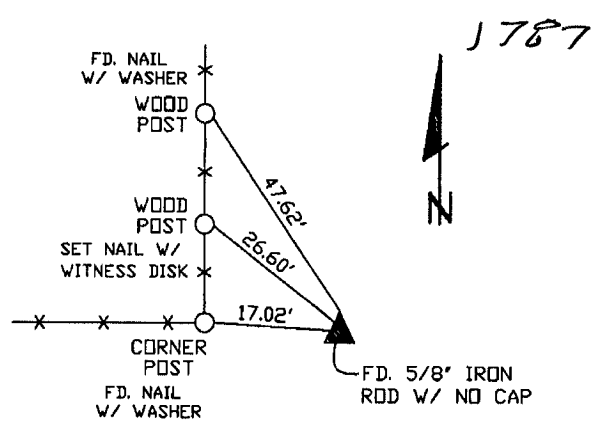
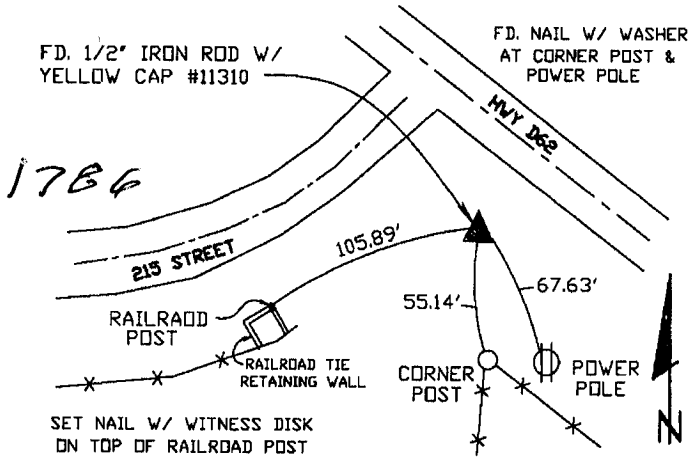
NW CORNER - FOUND 5/8" IRON ROD W/ NO CAP

NE CORNER SE1/4 NW1/4 - SET 1/2" IRON ROD W/ YELLOW LS CAP #12642 - SET ON LINE BETWEEN THE CENTER OF SECTION AND THE N1/4 CORNER AND USED FENCELINE EVIDENCE TO THE WEST TO ESTABLISH THIS CORNER

SW CORNER SE1/4 NW1/4 - SET 1/2" IRON ROD W/ YELLOW LS CAP #12642 - SET ON LINE AND MIDWAY BETWEEN THE CENTER OF SECTION AND THE W1/4 CORNER

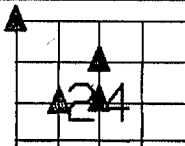
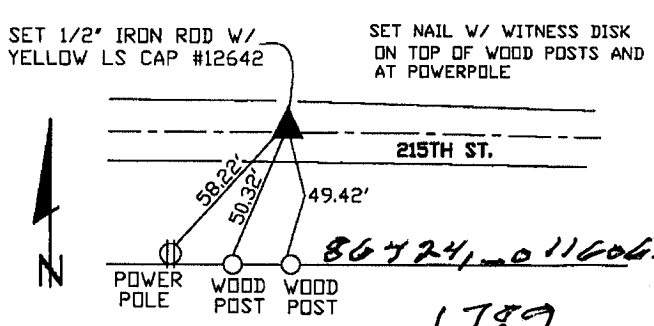
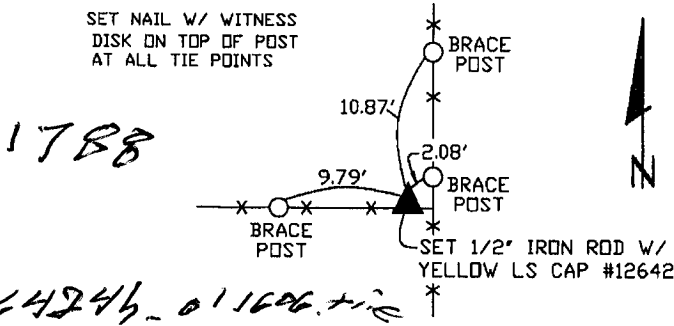
86424m-011606.tif
CENTER OF SECTION

PLAN VIEW 86423c-011606.tif
NW CORNER



NE CORNER SE1/4 NW1/4

SW CORNER SE1/4 NW1/4



CORNERS TO BE INDEXED

CENTER OF SECTION	24	86N	4W
NW CORNER	24	86N	4W