

86436e-102401  
ID 1041

2001 3976

FILED  
RECORDERS OFFICE  
JONES COUNTY IOWA

01 NOV 16 PM 12:05

MARIE KRUTZFIELD  
RECORDER No Fee

864250-102401  
ID 1042

863300-102401  
ID 1043

86330m-102401  
ID 1044

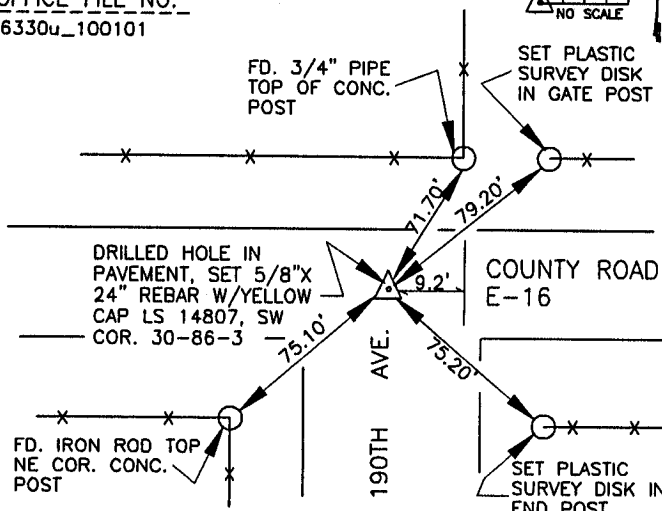
J.D. TJEPKES, L.S. JONES COUNTY ENGINEER'S OFFICE, 19501 HWY. 64, ANAMOSA, IOWA, 52205 (319)462-3785

# UNITED STATES PUBLIC LAND SURVEY CORNER CERTIFICATE

LAND SURVEY MONUMENTS SITUATED IN SECTION 30, TOWNSHIP 86  
NORTH, RANGE 3 WEST OF THE 5TH P.M., JONES COUNTY, IOWA

### CORNERS TO BE INDEXED

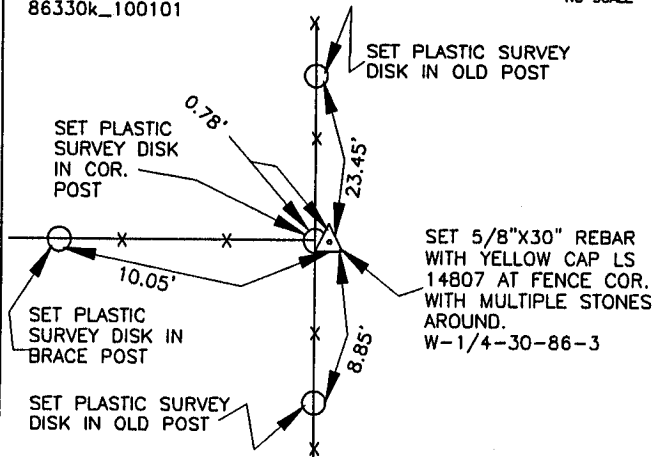
CORNER SECTION TOWNSHIP RANGE  
SOUTHWEST 30 86N 3W  
OFFICE FILE NO.  
86330u\_100101



PREVIOUSLY RECORDED IN BOOK N/A, PAGE N/A  
MONUMENT DESCRIPTION AND HOW ESTABLISHED FOUND CUT  
SQUARE AT SEC. COR. LOCATION PER COUNTY ROAD PLAN LC-2756  
(1) AT STA. 318+53.7. DRILLED HOLE IN PAVEMENT, SET 5/8"X24"  
REBAR WITH YELLOW CAP LS 14807 IN CENTER OF SQUARE. SET  
REFERENCE POINTS AND TIED OUT AS INDICATED. SW-30-86-3.

### CORNERS TO BE INDEXED

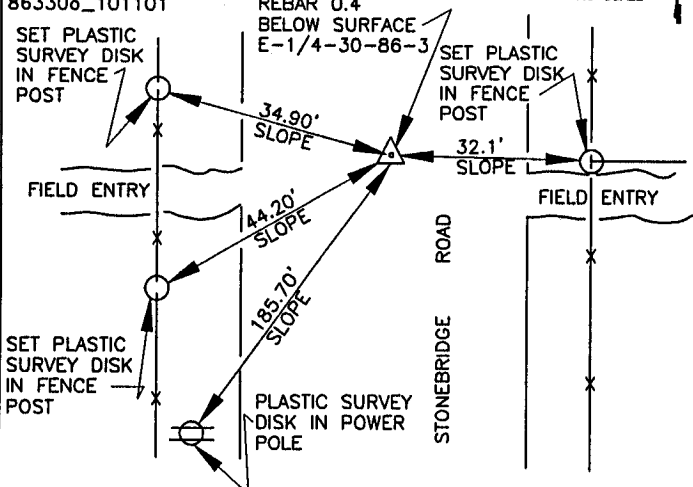
CORNER SECTION TOWNSHIP RANGE  
W-1/4-COR. 30 86N 3W  
OFFICE FILE NO.  
86330k\_100101



PREVIOUSLY RECORDED IN BOOK N/A, PAGE N/A  
MONUMENT DESCRIPTION AND HOW ESTABLISHED SET 5/8"X30"  
REBAR WITH YELLOW CAP LS 14807 AT FENCE COR. WITH MULTIPLE  
STONES AROUND. GOOD DISTANCES AND BEARINGS NORTH AND  
SOUTH. SET REFERENCE POINTS AND TIED OUT AS INDICATED  
WEST QUARTER CORNER SECTION 30, T86N, R3W, 5TH P.M.,  
JONES COUNTY, IOWA.

### CORNERS TO BE INDEXED

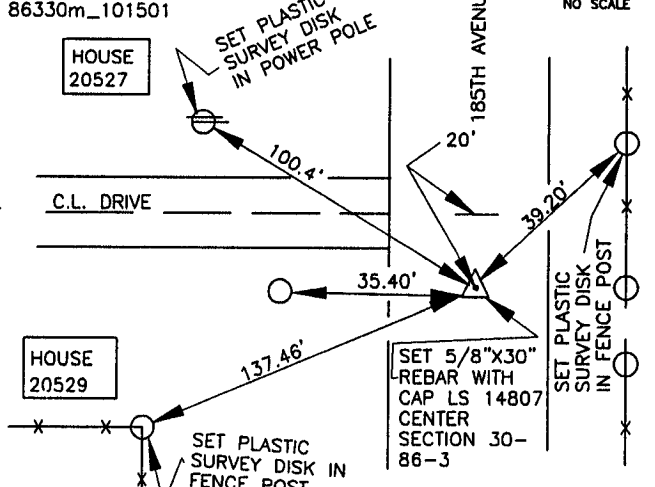
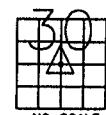
CORNER SECTION TOWNSHIP RANGE  
EAST 1/4 30 86N 3W  
OFFICE FILE NO.  
86330o\_101101



PREVIOUSLY RECORDED IN BOOK N/A, PAGE N/A  
MONUMENT DESCRIPTION AND HOW ESTABLISHED FOUND 5/8"  
REBAR 0.4' BELOW ROAD SURFACE IN CENTER OF ROAD. SET  
REFERENCE POINTS AND TIED OUT AS INDICATED. EAST QUARTER  
CORNER SECTION 30, TOWNSHIP 86 NORTH, RANGE 3 WEST,  
5TH P.M., JONES COUNTY, IOWA

### CORNERS TO BE INDEXED

CORNER SECTION TOWNSHIP RANGE  
CENTER 30 86N 3W  
OFFICE FILE NO.  
86330m\_101501



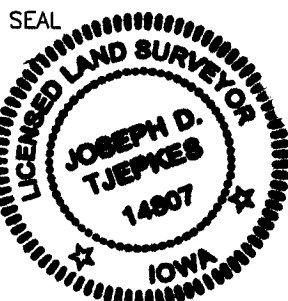
PREVIOUSLY RECORDED IN BOOK N/A, PAGE N/A  
MONUMENT DESCRIPTION AND HOW ESTABLISHED SET 5/8"X30"  
REBAR WITH YELLOW CAP LS 14807 PER SECTION BREAKDOWN  
AND INTERSECTING QUARTER LINES. SET REFERENCE POINTS AND  
TIED OUT AS INDICATED. CENTER SECTION 30, T86N, R3W, 5TH  
P.M., JONES COUNTY IOWA.

I hereby declare that this plat, survey or report was made by me or under my direct personal supervision and that I am a duly registered Land Surveyor under the laws of the State of Iowa.

Signed:

*Joseph D. Tjepkes* 10-24-01

Joseph D. Tjepkes L.S. Iowa Reg. No. 14807  
My Registration Renewal Date is December 31, 2002



J.D. TJEPKES LS 14807  
JONES COUNTY  
ENGINEER'S OFFICE

19501 HWY. 64,  
ANAMOSA, IOWA,  
52205 (319)462-3785