

2004 3010

FILED
RECORDERS OFFICE
JONES COUNTY IOWA

K

04 AUG 11 AM 11:54

MARIE KRUTZFIELD 7.00 PD
RECORDER

Prepared by Wm. Burger Land Surveyors 510 3rd Street West Court, Worthington, Iowa Phone 563 - 855 2028

UNITED STATES PUBLIC LAND SURVEY CORNER CERTIFICATE

Land Survey Monuments situated in Section 24, Township 86N, Range 4W, of the Fifth Principal Meridian, Jones County, Iowa. Previously recorded in N/A in the Office of the County Recorder

Monument Description and Remarks: (No Corner Certificates found at the County Recorders Office)

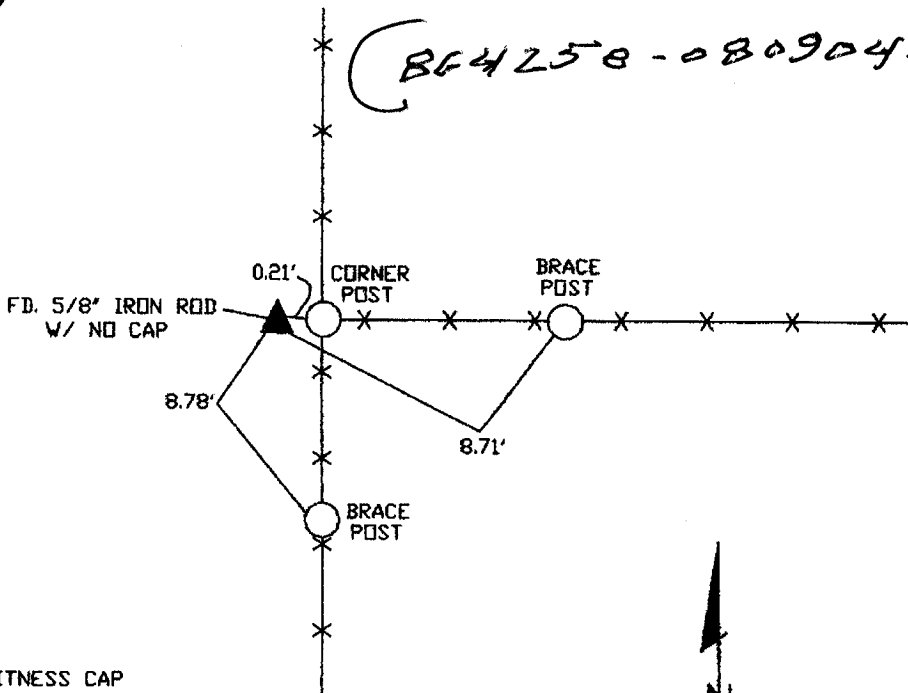
SE CORNER - FD. 5/8" IRON ROD W/ NO CAP

PLAN VIEW

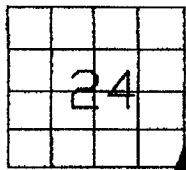
SE CORNER NE - 25 - 86 - 4

361

(864258 - 080904 tie)



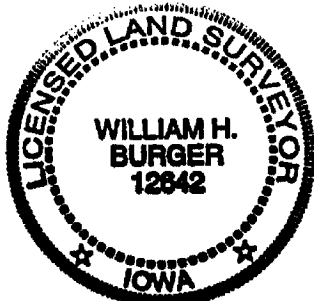
SET WITNESS CAP AT ALL TIE POINTS



SEC. 24 TWP. 86N RANGE 4W

CORNERS TO BE INDEXED

SE CORNER _____ 24 86N 4W



I hereby certify that this land surveying document was prepared and related survey work was performed by me or under my direct personal supervision and that I am a duly licensed Land Surveyor under the laws of the State of Iowa.

William H. Burger 8/9/04
William H. Burger Date

License number 12642

My license renewal date is December 31, 2004

Pages or Sheets covered by this seal Sheet 1 of 1

SECTION CORNER CERTIFICATE

OF
 LAND SURVEY MONUMENTS SITUATED IN SECTION 19, TOWNSHIP 86 NORTH,
 RANGE 3 WEST, OF THE FIFTH PRINCIPAL MERIDIAN, JONES, COUNTY, IOWA.

PREVIOUSLY RECORDED IN BOOK _____ AT PAGE _____

FOR RECORDER'S USE

REASON FOR PREPARING CERTIFICATE:

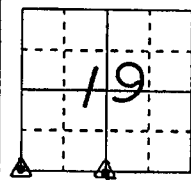
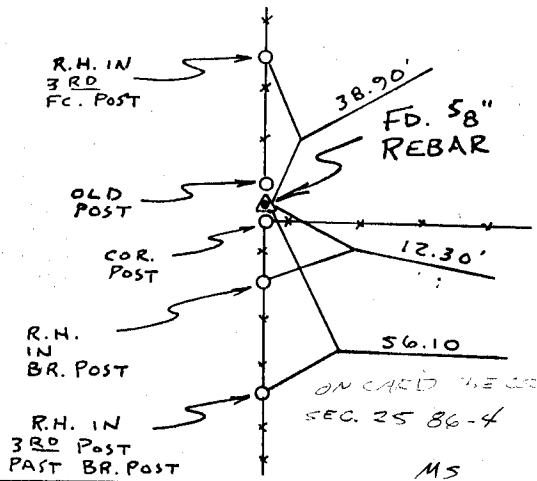
- A) THERE IS NO CERTIFICATE FOR THE CORNER ON FILE WITH THE RECORDER OF THE COUNTY IN WHICH THE CORNER IS LOCATED.
- B) CORNER POSITION DIFFERS FROM THAT SHOWN IN THE PUBLIC RECORDS OF THE COUNTY IN WHICH THE CORNER IS LOCATED.
- C) THE CORNER MONUMENT HAS BEEN REPLACED OR MODIFIED.
- D) THE REFERENCE TIES REFERRED TO IN AN EXISTING PUBLIC RECORD ARE INCORRECT.

MONUMENT DESCRIPTION AND REMARKS:

S.W. CORNER SECTION 19-T 86N-R 3W FD 5/8" REBAR
 BETWEEN COR. POSTS ON NORTH-SOUTH FC. LINE
 S 1/4 CORNER SECTION 19-T 86N-R 3W FD 5/8" REBAR
 ON E COUNTY ROAD 12" DEEP IN LINE
 W/ FC. EAST

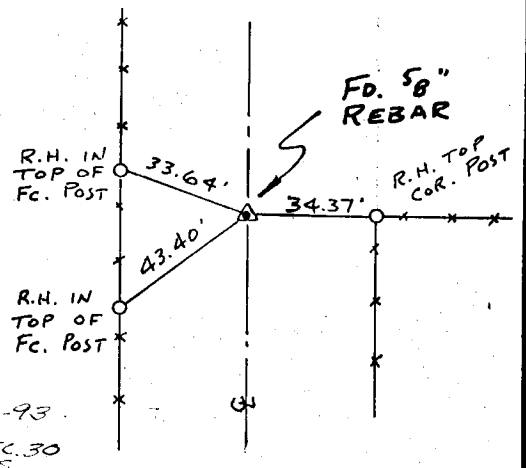
RECOVERY TIE DRAWING

S.W. Cor 19-86-3



NOT TO SCALE

S 1/4 Cor. 19-86-3



I, GLEN D. MEISNER, CERTIFY THAT THE CORNER LOCATION(S) SHOWN ON THIS RECORD WERE DETERMINED BY ME OR UNDER MY DIRECTION AND CONTROL AND THAT THIS U.S. PUBLIC LAND SURVEY MONUMENT RECORD IS CORRECT AND COMPLETE TO THE BEST OF MY KNOWLEDGE AND BELIEF.



Glen D. Meisner 6-29-93
 GLEN D. MEISNER L.S. NO 8165 DATE

L D I S T R I C T	<input checked="" type="checkbox"/> GOVERNMENT CORNER	SHEET TITLE: U.S. PUBLIC LAND SURVEY RECORD	H E I N G	HALL AND HALL ENGINEERS, INC. 226 29TH STREET DRIVE S.E. CEDAR RAPIDS, IOWA 52403 319-362-9548
	<input type="checkbox"/> 5/8" THE PIN SET	PROJECT TITLE: STEVE ISAAC SURVEY		
	<input type="checkbox"/> CENTERLINE			
	<input type="checkbox"/> EXISTING FENCE LINE			
	<input type="checkbox"/> R.O.W. LINE			
	D W N R W B	C H K G D M	A P P	D A T E 3-14-93
				SCALE NONE
				F N O T 26
				P R O J 4822

86425e-062993, 86330c-062993