

2003 1081

FILED
RECORDERS OFFICE
JONES COUNTY IOWA

03 MAR 13 PM 1:27

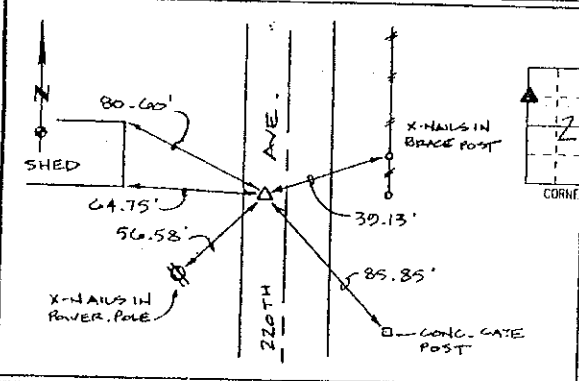
MARIE KRUTZFIELD
RECORDER 6.00 PD

PREPARED BY HALL & HALL ENGINEERS, INC. 209 29TH STREET N.E. CEDAR RAPIDS, IOWA 52402 (319) 362-9548

LAND SURVEY MONUMENTS SITUATED IN SECTION 27, TOWNSHIP 26 NORTH,
RANGE 4 WEST, OF THE FIFTH PRINCIPAL MERIDIAN, JONES COUNTY IOWA.

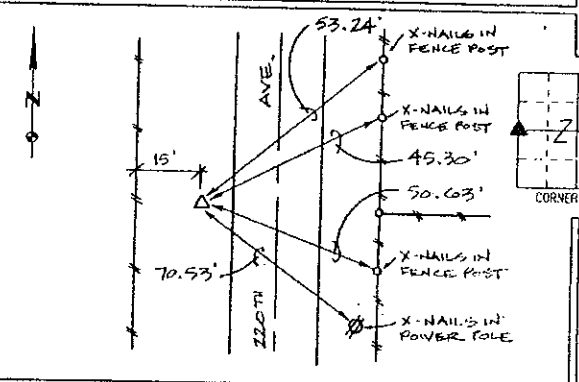
RECOVERY TIE DRAWING

MONUMENT DESCRIPTION AND REMARKS:



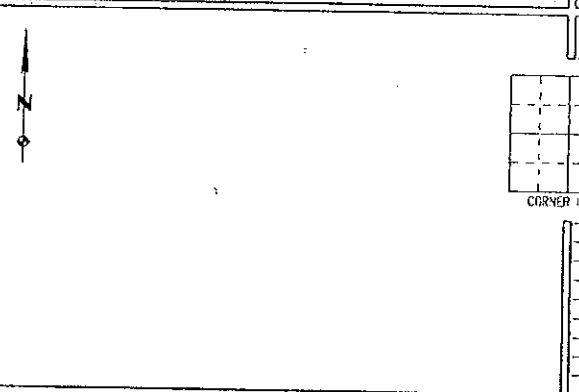
NW COR. SW 1/4 NW 1/4, SEC. 27, T26N, R4W

REASON FOR PREPARING CERTIFICATE: B, C OR D
PREVIOUS BOOK _____, PAGE _____
SET 1/2" REBAR WITH RED L.S. CAP
11954 7' WEST OF CENTERLINE



W 1/4 COR. 1/4 1/4, SEC. 27, T26N, R4W

REASON FOR PREPARING CERTIFICATE: B, C OR D
PREVIOUS BOOK _____, PAGE _____
SET 1/2" REBAR WITH RED L.S. CAP
11954 14' WEST OF CENTERLINE



___ COR. 1/4 1/4, SEC. ___, T__N, R__W

REASON FOR PREPARING CERTIFICATE: A, B, C OR D
PREVIOUS BOOK _____, PAGE _____



I hereby certify that this land surveying document was prepared and the related survey work was performed by me or under any direct personal supervision and that I am a duly licensed Land Surveyor under the laws of the State of Iowa.
Signed: Daniel J. Johnson Date: 3-4-03
Daniel J. Johnson, L.S. 11954
My license renewal date is December 31, 2004
Pages or sheets covered by this seal: 1

REASON FOR PREPARING CERTIFICATE:
A) THERE IS NO CERTIFICATE FOR THE CORNER ON FILE WITH THE RECORDER OF THE COUNTY IN WHICH THE CORNER IS LOCATED.
B) CORNER POSITION DIFFERS FROM THAT SHOWN IN THE PUBLIC RECORDS OF THE COUNTY IN WHICH THE CORNER IS LOCATED.
C) THE CORNER MONUMENT HAS BEEN REPLACED OR MODIFIED.
D) THE REFERENCE TIES REFERRED TO IN AN EXISTING PUBLIC RECORD ARE INCORRECT OR MISSING.

Sheet Title: U.S. PUBLIC LAND SURVEY CORNER CERTIFICATE

Project Title: HARRY DEMEAN

HALL AND HALL ENGINEERS, INC.
209 29TH STREET N.E.
CEDAR RAPIDS, IOWA 52402
(319) 362-9548

Drawn by: DLK	Checked by: DJJ	Approved by: DJJ	Field Book No:	Scale: NONE	Date: 2/11/03	Project No: 48960
---------------	-----------------	------------------	----------------	-------------	---------------	-------------------

SECTION CORNER CERTIFICATE

OF
 LAND SURVEY MONUMENTS SITUATED IN SECTION 27, TOWNSHIP 86 NORTH,
 RANGE 4 WEST, OF THE FIFTH PRINCIPAL MERIDIAN, JONES, COUNTY, IOWA.

PREVIOUSLY RECORDED IN BOOK _____ AT PAGE _____.

FOR RECORDER'S USE

REASON FOR PREPARING CERTIFICATE:

- A) THERE IS NO CERTIFICATE FOR THE CORNER ON FILE WITH THE RECORDER OF THE COUNTY IN WHICH THE CORNER IS LOCATED.
- B) CORNER POSITION DIFFERS FROM THAT SHOWN IN THE PUBLIC RECORDS OF THE COUNTY IN WHICH THE CORNER IS LOCATED.
- C) THE CORNER MONUMENT HAS BEEN REPLACED OR MODIFIED.
- D) THE REFERENCE TIES REFERRED TO IN AN EXISTING PUBLIC RECORD ARE INCORRECT.

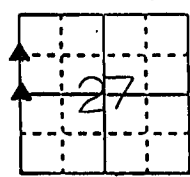
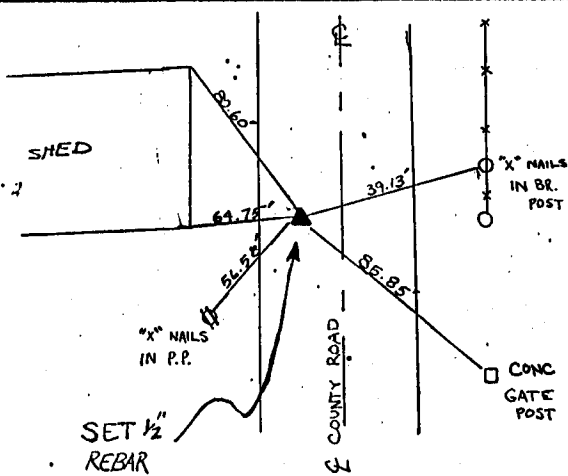
MONUMENT DESCRIPTION AND REMARKS :

SW CORNER OF THE SW 1/4 NW 1/4 SECTION 27-T86N-R4W SET 1/2" REBAR WITH
L.S. CAP # 11954 7' WEST OF E COUNTY ROAD.

W 1/4 CORNER SECTION 27-T86N-R4W SET 1/2" REBAR WITH L.S. CAP # 11954
14' WEST OF E COUNTY ROAD

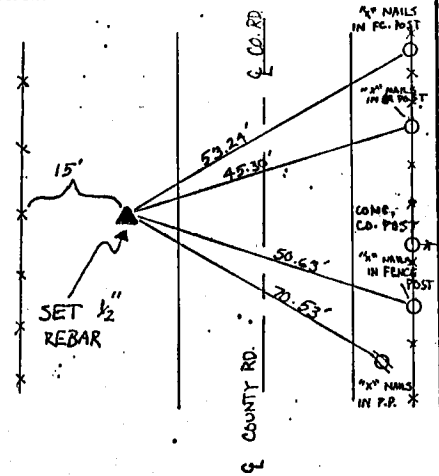
RECOVERY TIE DRAWING

SW COR. SW 1/4 NW 1/4 SEC. 27



NOT TO SCALE

W 1/4 COR. SEC. 27



4-12-94 M.S.

I, DANIEL J. JOHNSON, CERTIFY THAT THE CORNER LOCATION(S) SHOWN ON THIS RECORD WERE DETERMINED BY ME OR UNDER MY DIRECTION AND CONTROL AND THAT THIS U.S. PUBLIC LAND SURVEY MONUMENT RECORD IS CORRECT AND COMPLETE TO THE BEST OF MY KNOWLEDGE AND BELIEF.

Daniel J. Johnson 3-29-94
 DANIEL J. JOHNSON L.S. NO 11954 DATE



DZMOMC OZMOMC	GOVERNMENT CORNER 3/8" TIC PIN SET CENTERLINE EXISTING FENCE LINE R.O.X. LINE	SHEET NO.: U.S. PUBLIC LAND SURVEY RECORD PROJECT NO.: HARRY DEMEAN SURVEY	HALL AND HALL ENGINEERS, INC. 226 29TH STREET DRIVE S.E. CEDAR RAPIDS, IOWA 52403 319-362-9548
	DW N: SJM CK R: DJJ APP: DJJ	DATE: 7-8-93 SCALE: NONE	P. NO.: PROJ. NO.: 4896