

2005 1700

FILED  
RECORDERS OFFICE  
JONES COUNTY IOWA

05 MAY 19 PM 12:03

MARIE KRUTZFIELD  
RECORDER 7:00 Pd

Prepared by Wm. Burger Land Surveyors 510 3rd Street West Court, Worthington, Iowa Phone 563 - 855 2028

**UNITED STATES PUBLIC LAND SURVEY CORNER CERTIFICATE**

Land Survey Monuments situated in Section 21, Township 86N, Range 4W, of the Fifth Principal Meridian, Jones County, Iowa. Previously recorded in N/A in the Office of the County Recorder

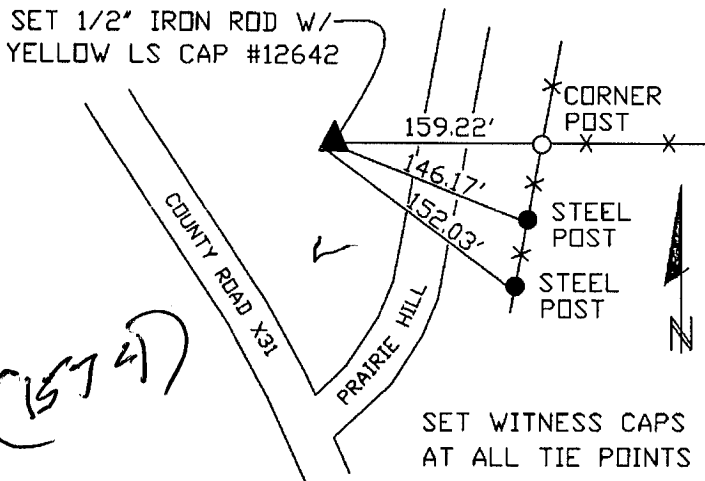
Monument Description and Remarks: (No Corner Certificates found at the County Recorders Office)

SW CORNER SE1/4 SW1/4 - SET 1/2" IRON ROD W/ YELLOW LS CAP #12642 - SET ON LINE AND MIDWAY BETWEEN THE SW CORNER AND THE S1/4 CORNER

NW CORNER SE1/4 SW1/4 - SET 1/2" IRON ROD W/ YELLOW LS CAP #12642 - RUN A STRAIGHT LINE FROM THE NE CORNER NW1/4 SW1/4 TO THE SE CORNER SW1/4 SW1/4 AND INTERSECTED IT WITH THE NORTH LINE OF PARCEL 98-88 AS RECORDED IN THE OFFICE OF THE JONES COUNTY RECORDER BOOK N, PAGE 7

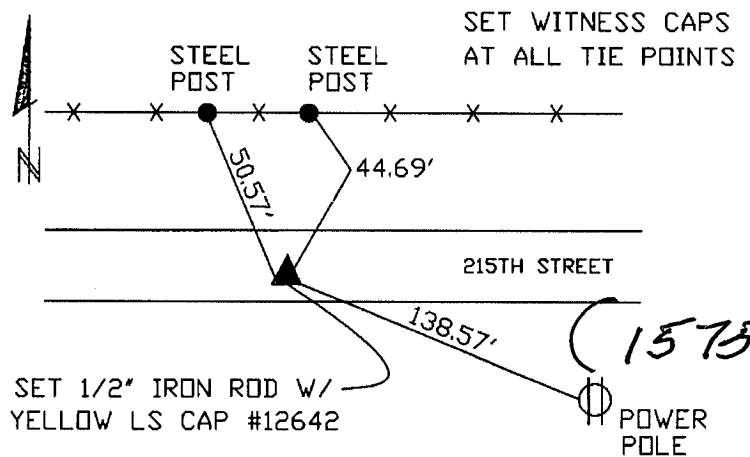
**PLAN VIEW**

SW CORNER SE1/4 SW1/4



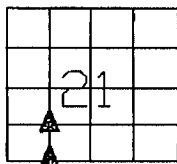
864214-051705, tie

NW CORNER SE1/4 SW1/4



SET 1/2" IRON ROD W/ YELLOW LS CAP #12642

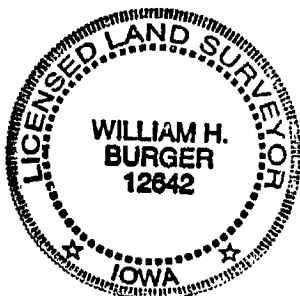
864218-051705, tie



SEC. 21 TWP. 86N RANGE 4W

**CORNERS TO BE INDEXED**

SW CORNER SE1/4 SW1/4	21	86N	4W
NW CORNER SE1/4 SW1/4	21	86N	4W



I hereby certify that this land surveying document was prepared and related survey work was performed by me or under my direct personal supervision and that I am a duly licensed Land Surveyor under the laws of the State of Iowa.

*William H. Burger* 5/17/05  
William H. Burger Date

License number 12642

My license renewal date is December 31, 2006

Pages or Sheets covered by this seal: Sheet 1 of 1

I