

Instrument #: 2015-1577  
 06/03/2015 09:06:21 AM Total Pages: 1  
 ZSC SECTION CORNER CERTIFICATE  
 Recording Fee: \$7.00 Transfer Tax: \$0  
 Marie Krutzfield, Recorder, Jones County Iowa



PREPARED BY: SCOTT SURVEY, INC. P.O. BOX 315 CENTER POINT IOWA 52213 319-540-5263

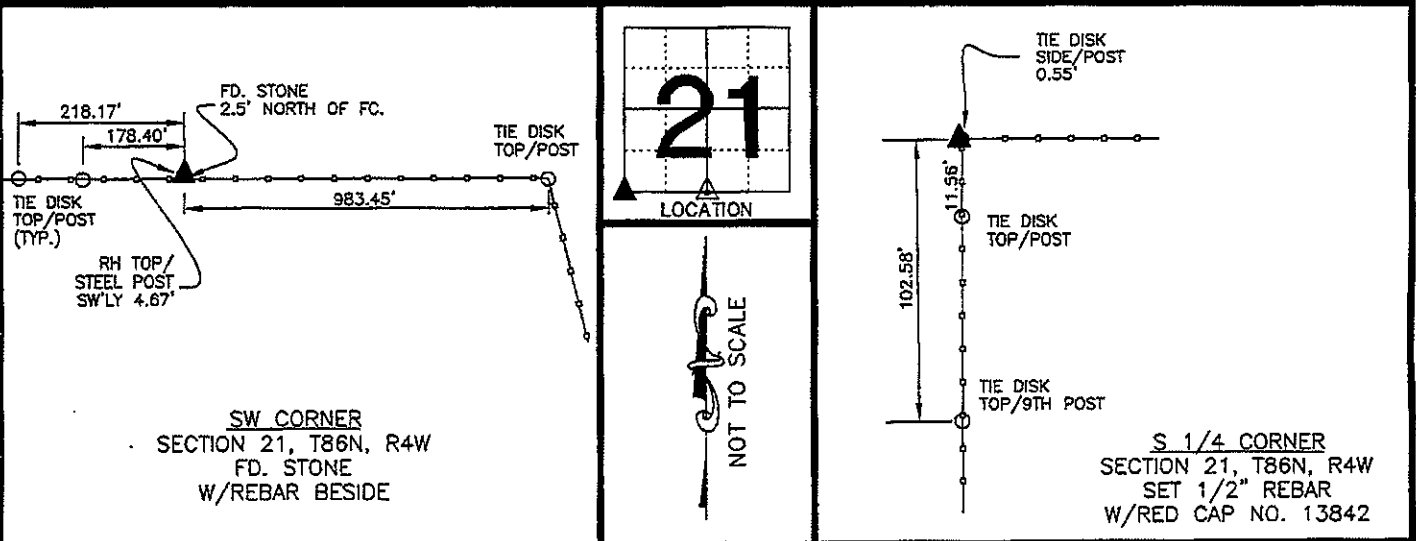
## U.S. PUBLIC LAND SURVEY CORNER CERTIFICATE

FOR LAND SURVEY MONUMENTS SITUATED IN SECTION 21, TOWNSHIP 86 NORTH, RANGE 4 WEST, OF  
 THE FIFTH PRINCIPAL MERIDIAN, JONES COUNTY, IOWA

**REASON FOR PREPARING CERTIFICATE:**

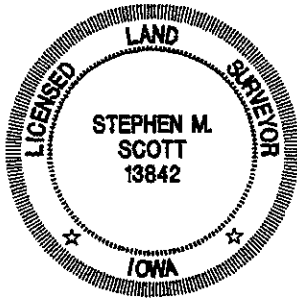
- A) THERE IS NO CERTIFICATE FOR THE CORNER ON FILE WITH THE RECORDER.  
 B) CORNER TIES DIFFER FROM PREVIOUSLY RECORDED CERTIFICATE.

### RECOVERY TIE DRAWING



**MONUMENT DESCRIPTION AND REMARKS :**  
 FOUND MONUMENT ACCORDING TO CORNER TIES FOUND IN THE OFFICE OF THE ENGINEER, JONES COUNTY.

**MONUMENT DESCRIPTION AND REMARKS :**  
 SET MONUMENT AS SHOWN.



I hereby certify that this land surveying document was prepared and the related survey work was performed by me or under my direct personal supervision and that I am a duly licensed Land Surveyor under the laws of the State of Iowa.

*Stephen M. Scott*  
 \_\_\_\_\_, 2015  
 STEPHEN M. SCOTT, L.S. Iowa Lic. No. 13842

My license renewal date is December 31, 2016.

DZM:GRT: <input checked="" type="checkbox"/> GOVERNMENT CORNER <input type="checkbox"/> 1/2" TIE PIN SET --- CENTERLINE - - - EXISTING FENCE LINE - - - R.O.W. LINE	<b>U.S. PUBLIC LAND SURVEY CORNER CERTIFICATE</b>	SECTION 21, T86N, R4W SW CORNER S 1/4 CORNER
		PROJECT NO. 1451201

# THIS IS NOT A CERTIFICATION

M

JONES COUNTY ENGINEER'S OFFICE, 19501 HWY. 64, ANAMOSA, IOWA, 52205 (319)462-3785

## UNITED STATES PUBLIC LAND SURVEY CORNER CERTIFICATE

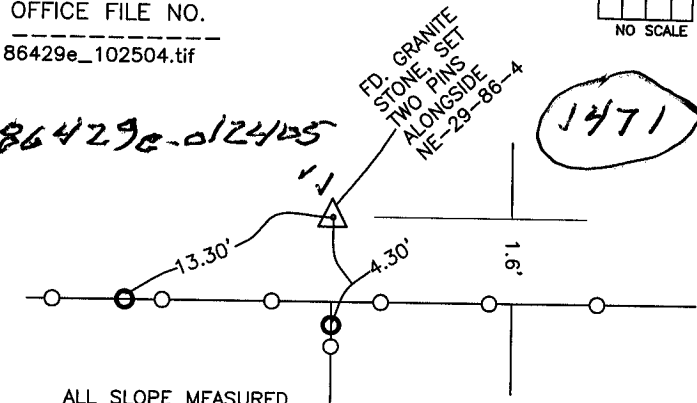
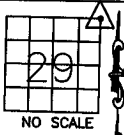
LAND SURVEY MONUMENTS SITUATED IN SECTION 29, TOWNSHIP 86  
NORTH, RANGE 4 WEST OF THE 5TH P.M., JONES COUNTY, IOWA

### CORNERS TO BE INDEXED

CORNER SECTION TOWNSHIP RANGE  
NORTHEAST 29 86N 4W

OFFICE FILE NO.

86429e\_102504.tif



REF:  
JONES COUNTY SURVEY CREW  
POSTEL-WOOD-BARTLE-POWELL  
11-20-79  
JONES COUNTY BOOK 283, PAGE 6

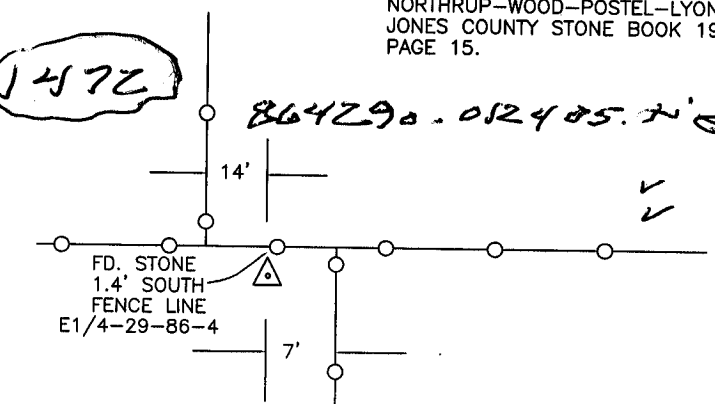
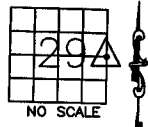
PREVIOUSLY RECORDED IN BOOK \_\_\_\_\_, PAGE \_\_\_\_\_  
MONUMENT DESCRIPTION AND HOW ESTABLISHED FOUND GRANITE  
STONE 6" BELOW SURFACE ON FENCE SOUTH, 1.6' NORTH OF EAST-  
WEST FENCE. SET TWO 1/2"x22" REBAR ALONGSIDE STONE. NORTHEAST  
CORNER SECTION 29, TOWNSHIP 86 NORTH, RANGE 4 WEST OF THE  
5TH PM, JONES COUNTY, IOWA.

### CORNERS TO BE INDEXED

CORNER SECTION TOWNSHIP RANGE  
E-QUARTER 29 86N 4W

OFFICE FILE NO.

86429o\_102504.tif



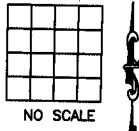
REF:  
JONES COUNTY SURVEY CREW:  
NORTHROP-WOOD-POSTEL-LYON  
JONES COUNTY STONE BOOK 19,  
PAGE 15.

PREVIOUSLY RECORDED IN BOOK \_\_\_\_\_, PAGE \_\_\_\_\_  
MONUMENT DESCRIPTION AND HOW ESTABLISHED FOUND  
GRANITE STONE 0.5" BELOW SURFACE. TIES AS INDICATED. EAST  
QUARTER OF SECTION 29, TOWNSHIP 86 NORTH, RANGE 4 WEST OF  
THE 5TH PRINCIPAL MERIDIAN, JONES COUNTY, IOWA.

### CORNERS TO BE INDEXED

CORNER SECTION TOWNSHIP RANGE

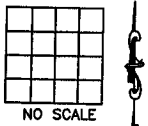
OFFICE FILE NO.



### CORNERS TO BE INDEXED

CORNER SECTION TOWNSHIP RANGE

OFFICE FILE NO.



PREVIOUSLY RECORDED IN BOOK \_\_\_\_\_, PAGE \_\_\_\_\_  
MONUMENT DESCRIPTION AND HOW ESTABLISHED \_\_\_\_\_

PREVIOUSLY RECORDED IN BOOK \_\_\_\_\_, PAGE \_\_\_\_\_  
MONUMENT DESCRIPTION AND HOW ESTABLISHED \_\_\_\_\_

~~I hereby declare that this plat, survey or report was made by me or under my direct personal supervision and that I am a duly registered Land Surveyor under the laws of the State of Iowa.~~

Signed: \_\_\_\_\_

SEAL

JONES COUNTY  
ENGINEER'S OFFICE

19501 HWY. 64,  
ANAMOSA, IOWA,  
52205 (319)462-3785