

**UNITED STATES PUBLIC LAND SURVEY CORNER CERTIFICATE**

Land Survey Monuments situated in Section 12, Township 86N, Range 4W, of the Fifth Principal Meridian, Jones County, Iowa. Previously recorded in N/A in the Office of the County Recorder

Monument Description and Remarks: (No Corner Certificates found at the County Recorders Office)

SE CORNER NE1/4 NW1/4 - FOUND STONE

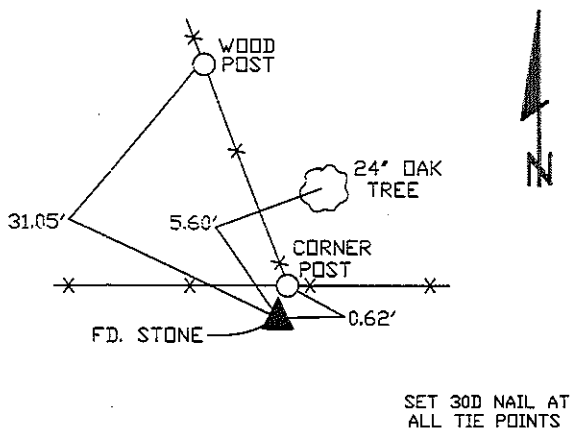
N1/4 CORNER - SET 1/2" IRON ROD W/YELLOW LS CAP #12642 - USED EXISTING FENCELINE EVIDENCE AND SET AT CORNER POST

NW CORNER NE1/4 NW1/4 - SET 1/2" IRON ROD W/YELLOW LS CAP #12642 - SET ON LINE AND MIDWAY BETWEEN THE NW CORNER AND THE N1/4 CORNER

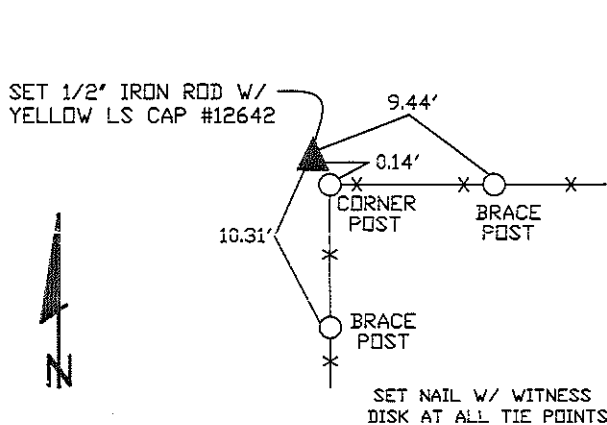
SW CORNER NE1/4 NW1/4 - SET 1/2" IRON ROD W/YELLOW LS CAP #12642 - RUN STRAIGHT LINE FROM OPPOSITE NORTH/SOUTH 1/4 1/4 CORNERS AND USED EXISTING EAST/WEST FENCELINE EVIDENCE AND SET AT THE POINT OF INTERSECTION

**PLAN VIEW**

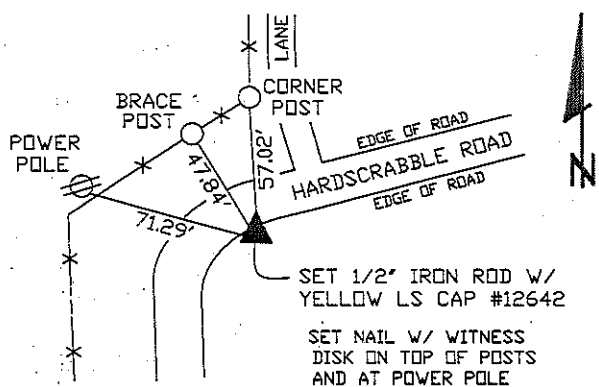
**SE CORNER NE1/4 NW1/4**



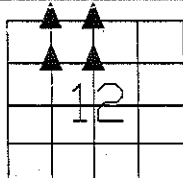
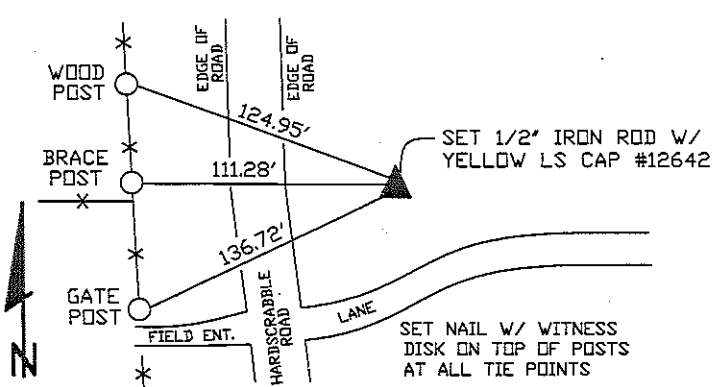
**N1/4 CORNER**



**NW CORNER NE1/4 NW1/4**



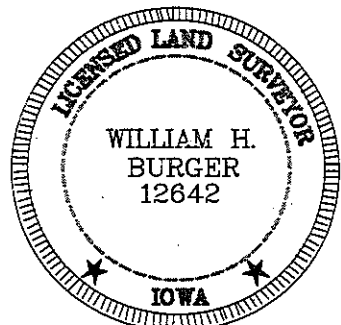
**SW CORNER NE1/4 NW1/4**



SEC. 12 TWP. 86N RANGE 4W

**CORNERS TO BE INDEXED**

SE CORNER NE1/4 NW1/4	12	86N	4W
N1/4 CORNER	12	86N	4W
NW CORNER NE1/4 NW1/4	12	86N	4W
SW CORNER NE1/4 NW1/4	12	86N	4W



I hereby certify that this land surveying document was prepared and related survey work was performed by me or under my direct personal supervision and that I am a duly licensed Land Surveyor under the laws of the State of Iowa.

*William H. Burger* 12/9/09  
 William H. Burger Date

License number 12642

My license renewal date is December 31, 2010

Pages or Sheets covered by this seal: Sheet 1 of 1