

COPY

Jones County Iowa
Marie Krutzfield, Recorder
Fee Book 2010 3529

12/16/2010 @1019AM
ZSC SEC COR CERT
Book: Page: # Pages: 1
Total Fees: \$0.00

PREPARED BY
CLARENCE J. WALTON, JONES COUNTY ENGINEER'S OFFICE, 19501 HWY. 64, ANAMOSA, IOWA, 52205 (319) 462-3785

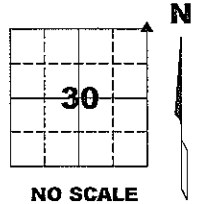
UNITED STATES PUBLIC LAND SURVEY CORNER CERTIFICATE

LAND SURVEY MONUMENTS SITUATED IN SECTION 30, TOWNSHIP 86 NORTH,
RANGE 4 WEST OF THE 5TH PRINCIPAL MERIDIAN, JONES COUNTY, IOWA.

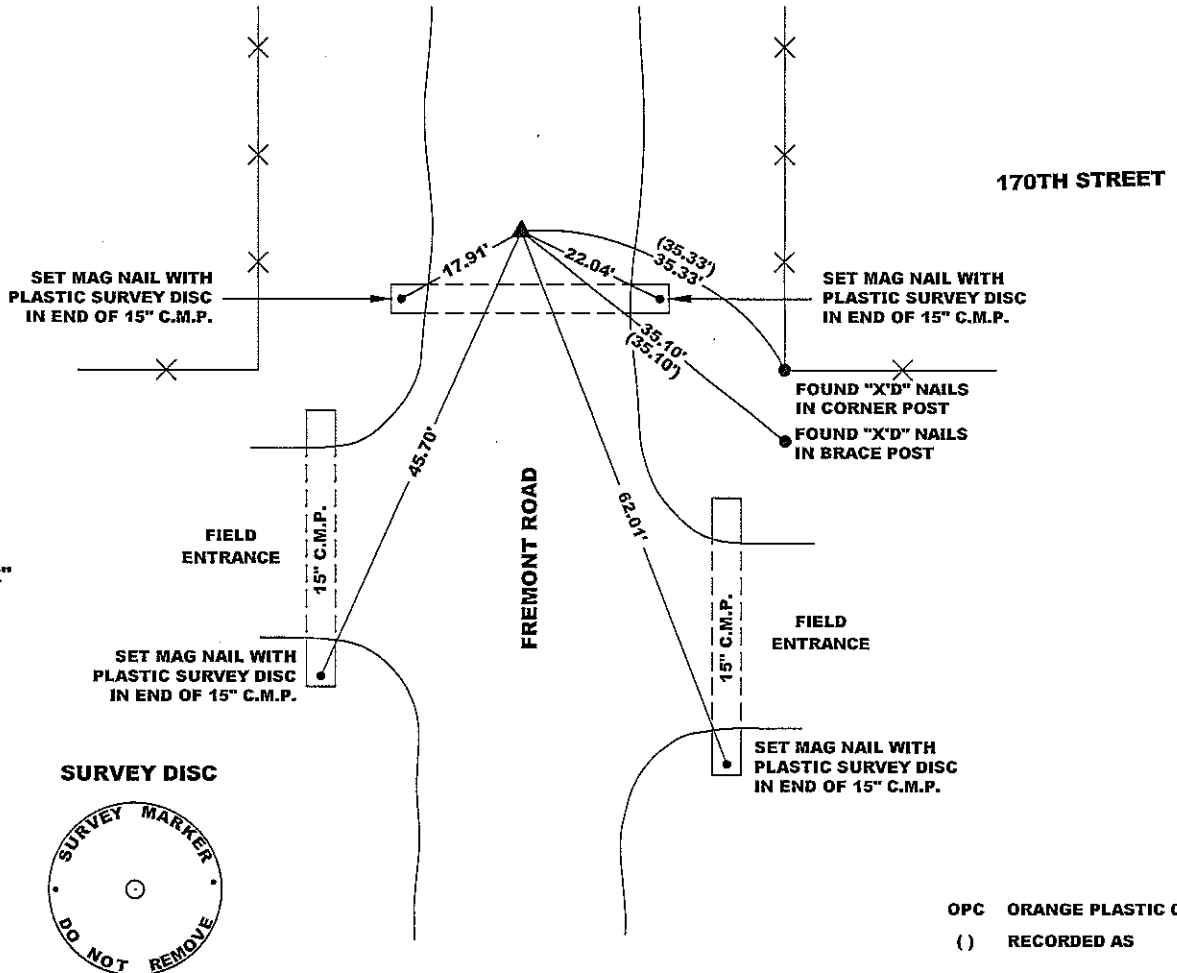
OFFICE FILE NO.

STATE PLANE COORDINATE
NAD 83 IOWA NORTH
N 3557349.20
E 5504607.49

CORNER SECTION TOWNSHIP RANGE
NE CORNER 30 T86N R4W



NOTE:
THE STATE PLANE
COORDINATE AS INDICATED
IS FOR CONVENIENCE ONLY.
THE TIES AS SHOWN SHOULD
BE USED TO REPLACE THE
CORNER, IF DESTROYED



**"SURVEY MARKER"
SIGN**



SURVEY DISC



OPC ORANGE PLASTIC CAP
() RECORDED AS

PREVIOUSLY RECORDED IN BOOK 338, PAGE 47

MONUMENT DESCRIPTION AND HOW ESTABLISHED 5/8" REBAR WAS REMOVED DUE TO REPLACEMENT OF CROSS-ROAD CULVERT. RESET CORNER WITH 5/8"X24" REBAR WITH ORANGE PLASTIC CAP #11310 PER RECORDED TIES AS CORNER WAS REMOVED BEFORE CORNER COULD BE CLOSELY REFERENCED OUT FOR RESETTING.

FIELD BOOK MISC. 1997-2000, PAGE 67. DATE OF SURVEY: 11/5/10



I hereby certify that this land surveying document and the related survey work was performed by me or under my direct personal supervision and that I am a duly registered Land Surveyor under the laws of the State of Iowa.
Signed: *Clarence J. Walton* 12/15/10
Clarence J. Walton, L.S.
My Registration Renewal Date is December 31, 2011
Iowa License Number 11310
Pages or sheets covered by this seal: 1 of 1.

- A. THERE IS NO CERTIFICATE FOR THE CORNER ON FILE WITH THE RECORDER OF THE COUNTY IN WHICH THE CORNER IS LOCATED.
- B. THE CORNER MONUMENT HAS BEEN REPLACED OR MODIFIED.
- C. THE SURVEYOR IN RESPONSIBLE CHARGE OF THE LAND SURVEYING ACCEPTS A CORNER POSITION THAT DIFFERS FROM THAT SHOWN IN THE PUBLIC RECORDS OF THE COUNTY IN WHICH THE CORNER IS LOCATED.
- D. THE REFERENCE TIES REFERRED TO IN AN EXISTING PUBLIC RECORD NO LONGER EXIST.

CORNERS TO BE INDEXED

CORNER	SECTION	TOWNSHIP	RANGE
NE CORNER	30	86N	4W
SE CORNER	19	86N	4W
SW CORNER	20	86N	4W
NW CORNER	29	86N	4W

JONES COUNTY ENGINEER'S OFFICE



19501 HWY. 64, ANAMOSA, IOWA 52205
(319) 462-3785

SECTION CORNER CERTIFICATE

OF
 LAND SURVEY MONUMENTS SITUATED IN SECTION 30, TOWNSHIP 86 NORTH,
 RANGE 4 WEST, OF THE FIFTH PRINCIPAL MERIDIAN, JONES, COUNTY, IOWA.

PREVIOUSLY RECORDED IN BOOK _____ AT PAGE _____ .

FOR RECORDER'S USE

REASON FOR PREPARING CERTIFICATE:

- A) THERE IS NO CERTIFICATE FOR THE CORNER ON FILE WITH THE RECORDER OF THE COUNTY IN WHICH THE CORNER IS LOCATED.
- B) CORNER POSITION DIFFERS FROM THAT SHOWN IN THE PUBLIC RECORDS OF THE COUNTY IN WHICH THE CORNER IS LOCATED.
- C) THE CORNER MONUMENT HAS BEEN REPLACED OR MODIFIED.
- D) THE REFERENCE TIES REFERRED TO IN AN EXISTING PUBLIC RECORD ARE INCORRECT.

2991

FILED
 RECORDERS OFFICE
 JONES COUNTY IOWA

93 MAY 10 AM 11:25

BOOK 338 PAGE 47
 LINDA J. BENDIXEN
 RECORDER 50002

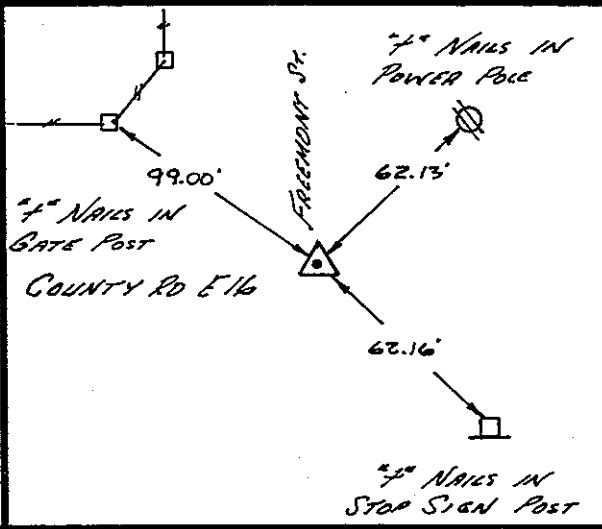
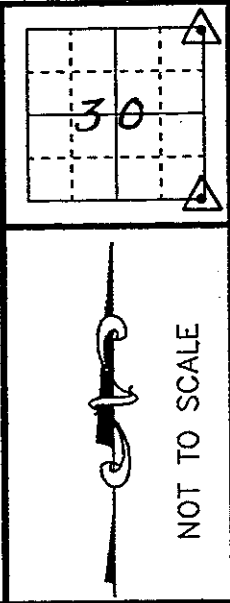
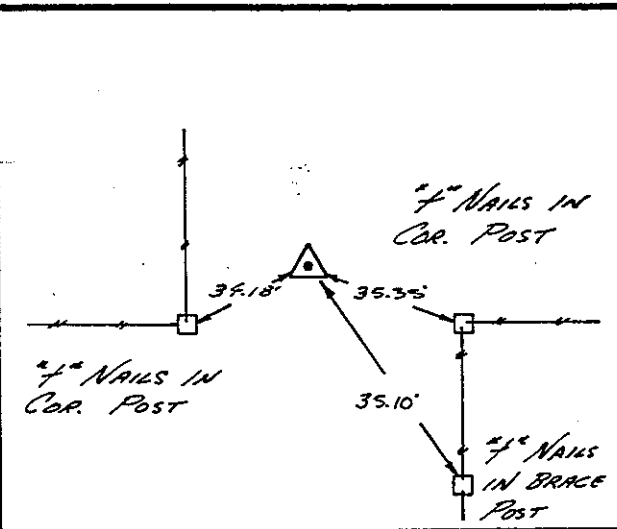
MONUMENT DESCRIPTION AND REMARKS :

FD 5/8" Ø REBAR @ NE Cor, NE 1/4 OF SECTION 30-86-4
FD 5/8" Ø REBAR @ SE Cor, NE 1/4 OF SECTION 30-80-4

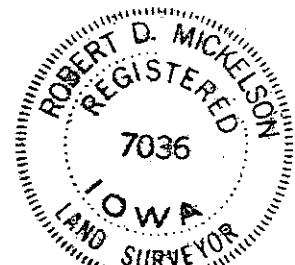
RECOVERY TIE DRAWING

NE Cor, NE 1/4, Sec. 30-T86N-R4W

SE Cor, NE 1/4, Sec. 30-T86N-R4W



I, ROBERT D. MICKELSON, CERTIFY THAT THE CORNER LOCATION(S) SHOWN ON THIS RECORD WERE DETERMINED BY ME OR UNDER MY DIRECTION AND CONTROL AND THAT THIS U.S. PUBLIC LAND SURVEY MONUMENT RECORD IS CORRECT AND COMPLETE TO THE BEST OF MY KNOWLEDGE AND BELIEF.



Robert D. Mickelson 5-7-93
 ROBERT D. MICKELSON L.S. NO 7036 DATE
 MY BIENNIAL REGISTRATION EXPIRES DECEMBER 31, 1994.

DZM:GML 5/8" Ø CENTERLINE EXISTING FENCE LINE R.O.W. LINE	SHEET TITLE U.S. PUBLIC LAND SURVEY CORNER CERTIFICATE	MMS CONSULTANTS, INC. Iowa City, Iowa 319-351-8282				
	PROJECT TITLE SECTION CORNER TIES					
NED MAS	KIC RDM	APP RDM	DATE 5-6-93	SCALE NONE	F NO B 323	J NO 3427-001

Ret'd Iowa Cert 2002 0153