

THIS IS NOT A CERTIFICATION

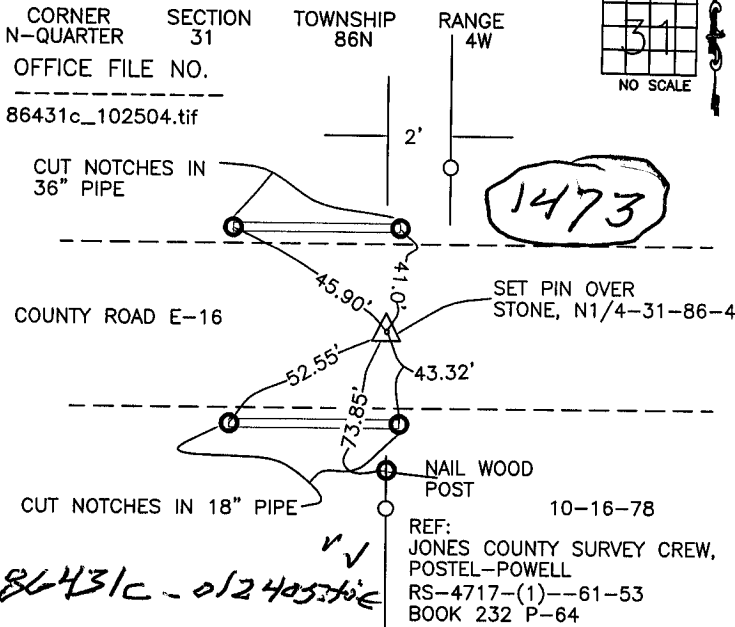
N

JONES COUNTY ENGINEER'S OFFICE, 19501 HWY. 64, ANAMOSA, IOWA, 52205 (319)462-3785

# UNITED STATES PUBLIC LAND SURVEY CORNER CERTIFICATE

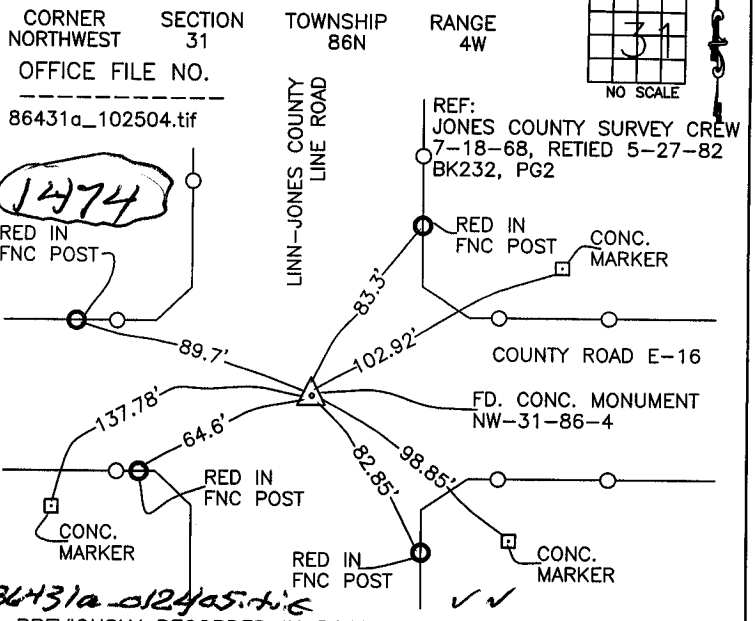
LAND SURVEY MONUMENTS SITUATED IN SECTION 31, TOWNSHIP 86 NORTH, RANGE 4 WEST OF THE 5TH P.M., JONES COUNTY, IOWA

### CORNERS TO BE INDEXED



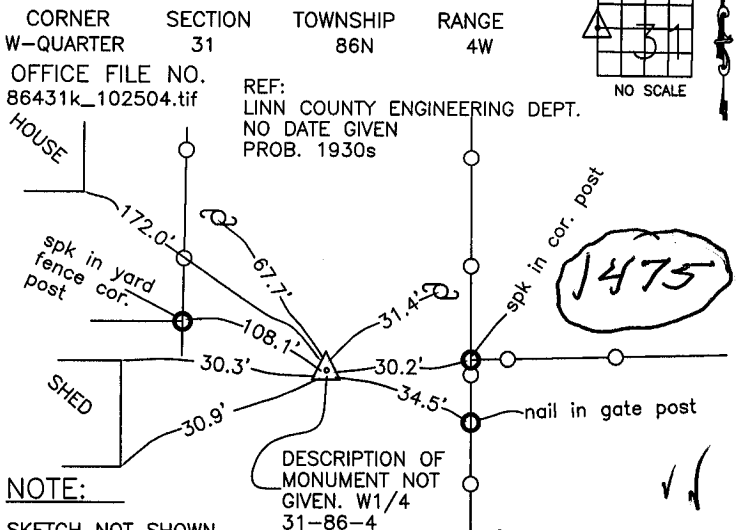
PREVIOUSLY RECORDED IN BOOK \_\_\_\_\_, PAGE \_\_\_\_\_  
 MONUMENT DESCRIPTION AND HOW ESTABLISHED SET  
 22" IRON PIN OVER STONE ON LINE FENCE SOUTH, 2' WEST OF FENCE NORTH, NORTH QUARTER CORNER SECTION 31, TOWNSHIP 86 NORTH, RANGE 4 WEST OF THE 5TH PRINCIPAL MERIDIAN, JONES COUNTY, IOWA.

### CORNERS TO BE INDEXED



PREVIOUSLY RECORDED IN BOOK \_\_\_\_\_, PAGE \_\_\_\_\_  
 MONUMENT DESCRIPTION AND HOW ESTABLISHED FOUND  
 CONC. MONUMENT 27" DOWN 0.7' LT STA. 2+99.3 IN 1968. TIED TO FENCE POSTS AS INDICATED. JONES COUNTY SURVEY CREW RECOVERED MONUMENT IN 1982. TIED TO CONC. MARKERS AS INDICATED. NORTHWEST CORNER SECTION 31, TOWNSHIP 86 NORTH, RANGE 4 WEST OF THE 5TH PRINCIPAL MERIDIAN, JONES COUNTY, IOWA.

### CORNERS TO BE INDEXED

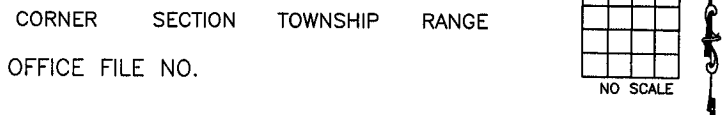


NOTE: SKETCH NOT SHOWN ON INDEX CARD. THIS SKETCH MADE FROM TIE DESCRIPTIONS, AND MAY NOT REPRESENT ACTUAL TOPOGRAPHY IN AREA.

DESCRIPTION OF MONUMENT NOT GIVEN. W1/4 31-86-4

PREVIOUSLY RECORDED IN BOOK \_\_\_\_\_, PAGE \_\_\_\_\_  
 MONUMENT DESCRIPTION AND HOW ESTABLISHED RESTORED  
 DESCRIPTION OF MONUMENT NOT GIVEN. LINN COUNTY SET IN CENTER OF ROAD IN LINE WITH FENCE EAST ON STRAIGHT LINE BETWEEN NW COR. AND SW COR. 31-86-4. WEST QUARTER CORNER SECTION 31, TOWNSHIP 86 NORTH, RANGE 4 WEST OF THE 5TH PRINCIPAL MERIDIAN, JONES COUNTY, IOWA.

### CORNERS TO BE INDEXED



PREVIOUSLY RECORDED IN BOOK \_\_\_\_\_, PAGE \_\_\_\_\_  
 MONUMENT DESCRIPTION AND HOW ESTABLISHED \_\_\_\_\_

~~I hereby declare that this plat, survey or report was made by me or under my direct personal supervision and that I am a duly registered Land Surveyor under the laws of the State of Iowa.~~

Signed: \_\_\_\_\_

SEAL

JONES COUNTY ENGINEER'S OFFICE

19501 HWY. 64, ANAMOSA, IOWA, 52205 (319)462-3785