

2002 0153

FILED
RECORDERS OFFICE
JONES COUNTY IOWA

02 JAN 11 AM 10:30

MARIE KRUTZFIELD
RECORDER 6.00 Pd

Prepared by: SCHNEIDER Land Surveying and Planning P.O. Box 105 Peosta, Iowa 52068 563-556-9055

UNITED STATES PUBLIC LAND SURVEY CORNER CERTIFICATE OF

Land Survey Monuments situated in Section 31, Township 86 North, Range 4 West of the Fifth Principal Meridian, Jones County, Iowa.

Previously recorded IN BOOK 338, PAGE 47 (NE COR. SEC. 31, aka SE COR. SEC. 30).

(BOOK, PAGE / DIST. NO. / CABINET, SLIDE)

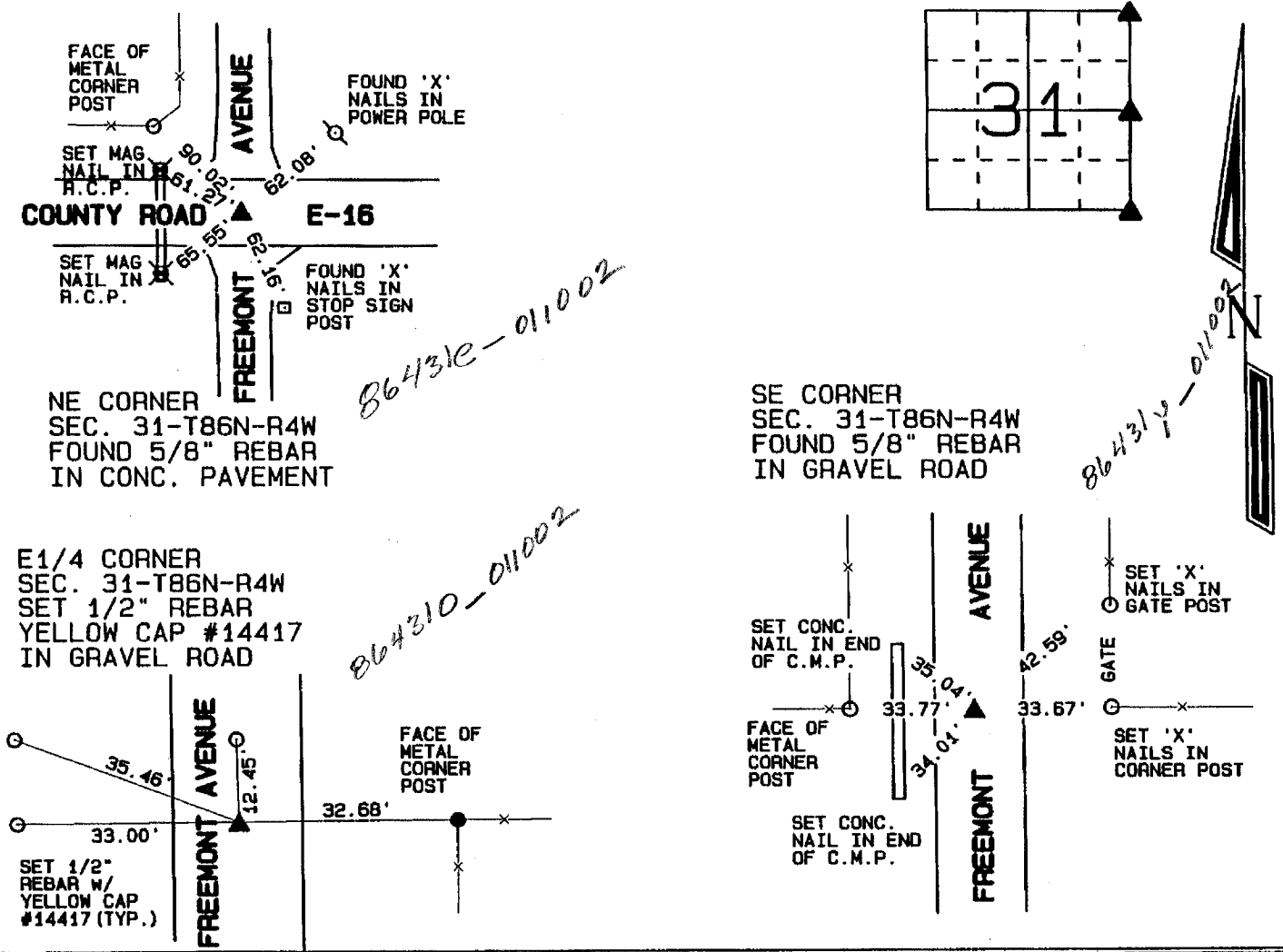
(Show reason for preparing this certificate, the evidence and detailed procedures used in establishing the corner positions and monumentation found or placed.)

Monument Description and Remarks: THE NE CORNER OF SEC. 31-T86N-R4W WAS RETIED AS IT WAS FOUND. ONE TIE HAD BEEN CHANGED AND MORE TIES WERE ADDED. NO MONUMENT WAS FOUND AT THE E1/4 CORNER OF SEC. 31-T86N-R4W. A 1/2" REBAR w/ YELLOW CAP #14417 WAS PLACED AT A SPLIT OF THE ROAD BED AND R.O.W. FENCES. IT WAS PLACED IN LINE WITH THE OCCUPATION FENCE LOCATED EAST OF THE CORNER.

A 5/8" REBAR WAS FOUND IN THE GRAVEL ROAD AT THE SE CORNER OF SEC. 31-T86N-R4W. THE REBAR WAS ACCEPTED AS THE CORNER AND REFERENCE TIED.

PLAN - VIEW

(Show a minimum of three reference ties to durable physical objects, relevant monuments and physical conditions that will enable recovery of the corner.)



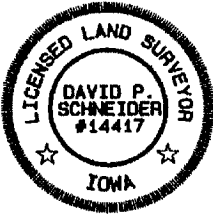
I hereby certify that this land surveying document was prepared and the related survey work was performed by me or under my direct personal supervision and that I am a duly licensed Land Surveyor under the laws of the State of Iowa.

David P. Schneider 1/10/2002

David P. Schneider P.L.S. #14417 Date:
My license renewal date is December 31, 2003.

Pages or sheets covered by this seal: THIS SHEET ONLY

SCHNEIDER
Land Surveying & Planning
P.O. Box 105 Peosta, Iowa 52068
Ph. #563-556-9055 Fax #563-556-9054



List Corners to be Indexed

Corners	Section	Twp	Range
NE	31	86N	4W
E1/4	31	86N	4W
SE	31	86N	4W

SECTION CORNER CERTIFICATE

OF
 LAND SURVEY MONUMENTS SITUATED IN SECTION 30, TOWNSHIP 86 NORTH,
 RANGE 4 WEST, OF THE FIFTH PRINCIPAL MERIDIAN, Jones, COUNTY, IOWA.

PREVIOUSLY RECORDED IN BOOK _____ AT PAGE _____ .

FOR RECORDER'S USE

REASON FOR PREPARING CERTIFICATE:

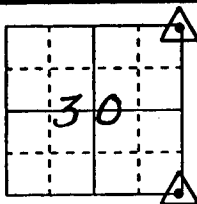
- A) THERE IS NO CERTIFICATE FOR THE CORNER ON FILE WITH THE RECORDER OF THE COUNTY IN WHICH THE CORNER IS LOCATED.
- B) CORNER POSITION DIFFERS FROM THAT SHOWN IN THE PUBLIC RECORDS OF THE COUNTY IN WHICH THE CORNER IS LOCATED.
- C) THE CORNER MONUMENT HAS BEEN REPLACED OR MODIFIED.
- D) THE REFERENCE TIES REFERRED TO IN AN EXISTING PUBLIC RECORD ARE INCORRECT.

MONUMENT DESCRIPTION AND REMARKS :

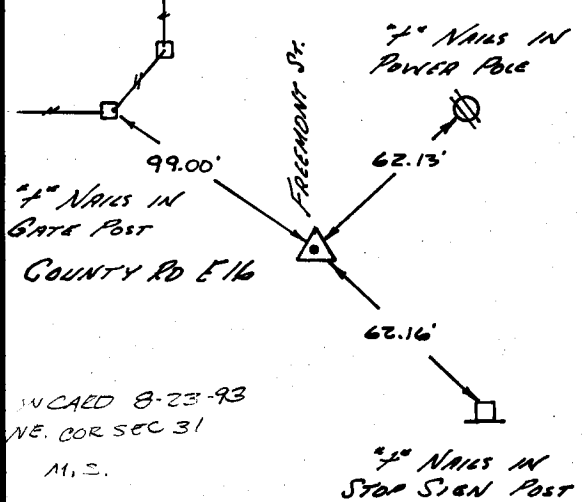
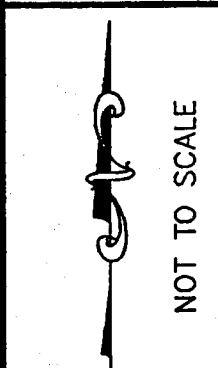
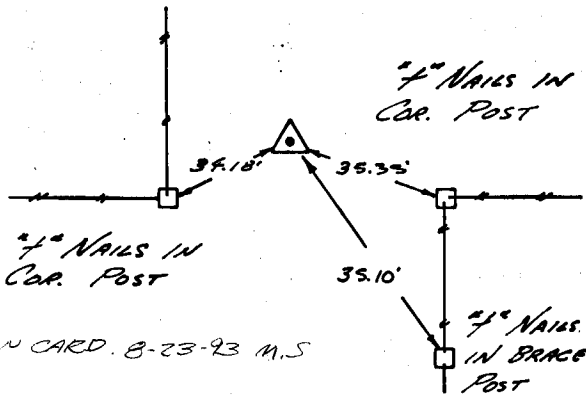
FD 5/8" Ø REBAR @ NE COR., NE 1/4 OF SECTION 30-86-4
FD 5/8" Ø REBAR @ SE COR., NE 1/4 OF SECTION 30-80-4

RECOVERY TIE DRAWING

NE COR. NE 1/4, SEC. 30-T86N-R4W



SE COR. NE 1/4, SEC. 30-T86N-R4W



I, ROBERT D. MICKELSON, CERTIFY THAT THE CORNER LOCATION(S) SHOWN ON THIS RECORD WERE DETERMINED BY ME OR UNDER MY DIRECTION AND CONTROL AND THAT THIS U.S. PUBLIC LAND SURVEY MONUMENT RECORD IS CORRECT AND COMPLETE TO THE BEST OF MY KNOWLEDGE AND BELIEF.



Robert D. Mickelson 5-7-93
 ROBERT D. MICKELSON L.S. NO 7036 DATE
 MY BIENNIAL REGISTRATION EXPIRES DECEMBER 31, 1994.

DZM/DFL	△ GOVERNMENT CORNER ○ 5/8" TIE PIN SET - - - CENTERLINE - x - EXISTING FENCE LINE - - - R.O.W. LINE	SHEET TITLE: U.S. PUBLIC LAND SURVEY CORNER CERTIFICATE PROJECT TITLE: SECTION CORNER TIES		MMS CONSULTANTS, INC. Iowa City, Iowa 319-351-8282		
	ZSD MAS	XIG RDM		APP RDM	DATE 5-6-93	SCALE NONE