

Instrument #: 2016-1953
 07/22/2016 10:55:10 AM Total Pages: 1
 ZSC SECTION CORNER CERTIFICATE
 Recording Fee: \$7.00 Transfer Tax: \$0
 Sheri L. Jones, Recorder, Jones County Iowa

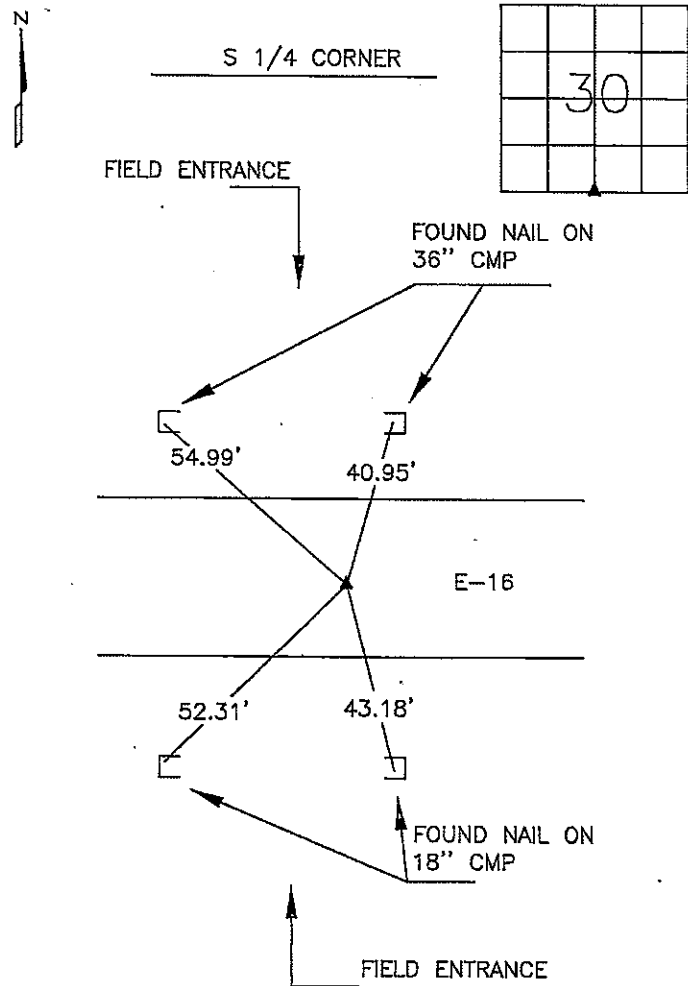


PREPARED BY
 STEPHEN MICHAEL BRAIN, BRAIN ENGINEERING, INC., 1540 MIDLAND COURT NE, CEDAR RAPIDS, IOWA PH. (319) 294-9424

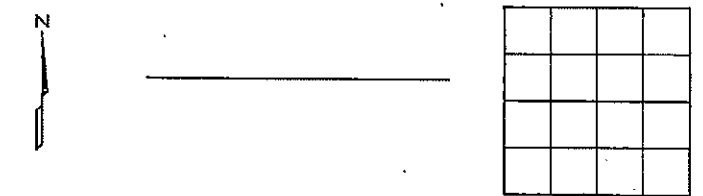
UNITED STATES PUBLIC LAND SURVEY CORNER CERTIFICATE

LAND SURVEY MONUMENTS SITUATED IN SECTION 30, TOWNSHIP 86 NORTH
 RANGE 4 WEST OF THE 5TH P.M., JONES COUNTY, IOWA:

NO SCALE



NO SCALE

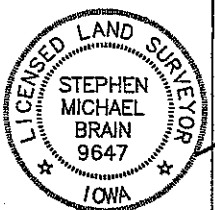


PREVIOUSLY RECORDED IN BOOK _____ PAGE _____

MONUMENT DESCRIPTION AND HOW ESTABLISHED _____
 FOUND $\frac{5}{8}$ " REBAR FLUSH WITH THE SURFACE IN CONCRETE
 ROAD AT THE S $\frac{1}{4}$ CORNER OF SEC. 30-T86N-R4W.

PREVIOUSLY RECORDED IN BOOK _____ PAGE _____

MONUMENT DESCRIPTION AND HOW ESTABLISHED _____



I hereby certify that this land surveying document and the related survey work was performed by me or under my direct personal supervision, and that I am a duly licensed Land Surveyor under the laws of the State of Iowa.
 Signed: *[Signature]* Date: 7-19-16
 Stephen Michael Brain, L.S.
 My License Renewal Date is December 31, 2016
 License Number 9647
 Pages or sheets covered by this seal: 1/1

- A.THERE IS NO CERTIFICATE FOR THE CORNER ON FILE WITH THE RECORDER OF THE COUNTY IN WHICH THE CORNER IS LOCATED
- B.THE SURVEYOR IN RESPONSIBLE CHARGE OF THE LAND SURVEYING ACCEPTS A CORNER POSITION WHICH DIFFERS FROM THAT SHOWN IN THE PUBLIC RECORDS OF THE COUNTY IN WHICH THE CORNER IS LOCATED.
- C.THE CORNER MONUMENT IS REPLACED OR MODIFIED IN ANY WAY.
- D.THE REFERENCE TIES REFERRED TO IN AN EXISTING PUBLIC RECORD ARE NOT CORRECT.

CORNERS TO BE INDEXED

CORNER	SECTION	TOWNSHIP	RANGE
S 1/4 CORNER	30	T86N	R 4 W

BRAIN ENGINEERING, INC.
 1540 MIDLAND COURT NE
 CEDAR RAPIDS, IOWA 52402
 (319) 294-9424

510516-10

THIS IS NOT A CERTIFICATION

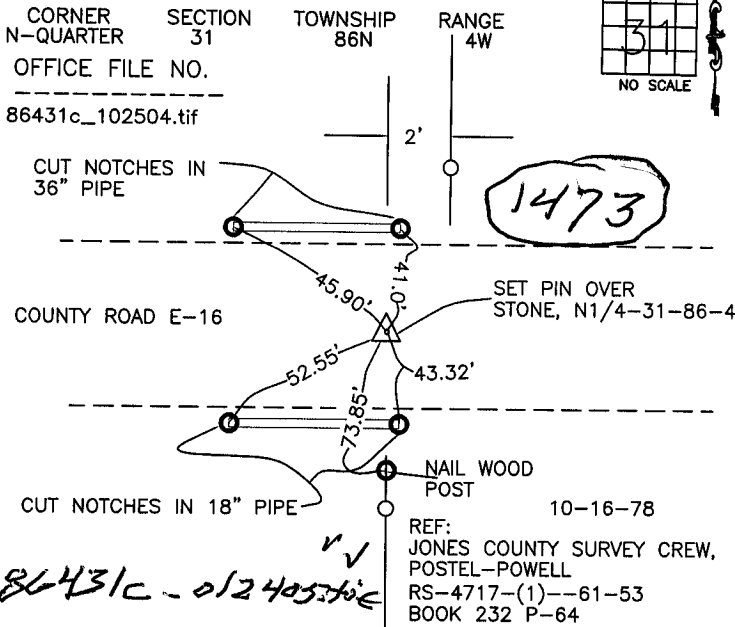
N

JONES COUNTY ENGINEER'S OFFICE, 19501 HWY. 64, ANAMOSA, IOWA, 52205 (319)462-3785

UNITED STATES PUBLIC LAND SURVEY CORNER CERTIFICATE

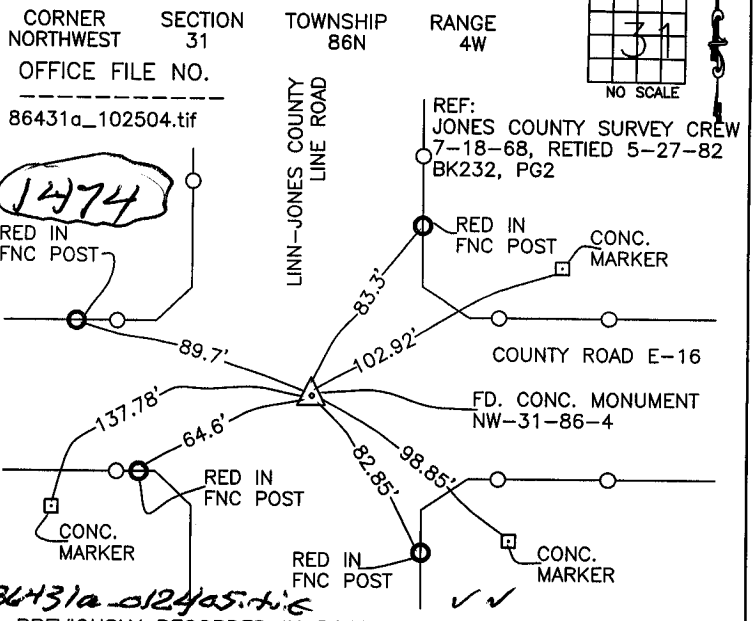
LAND SURVEY MONUMENTS SITUATED IN SECTION 31, TOWNSHIP 86 NORTH, RANGE 4 WEST OF THE 5TH P.M., JONES COUNTY, IOWA

CORNERS TO BE INDEXED



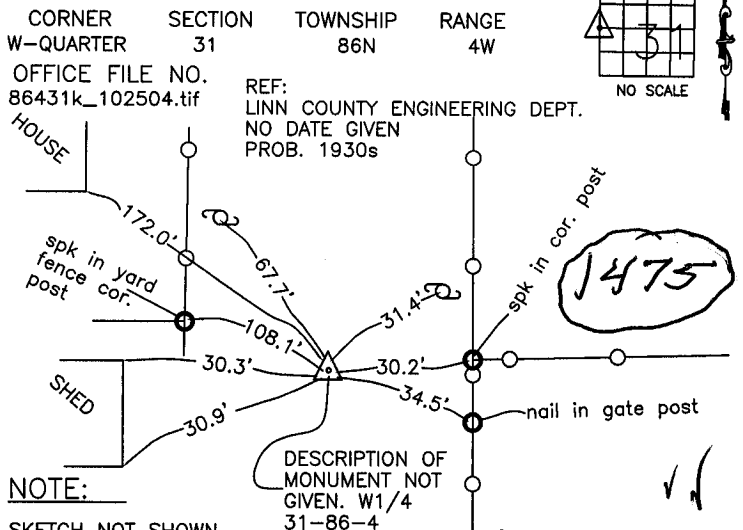
PREVIOUSLY RECORDED IN BOOK _____, PAGE _____
 MONUMENT DESCRIPTION AND HOW ESTABLISHED SET
 22" IRON PIN OVER STONE ON LINE FENCE SOUTH, 2' WEST OF FENCE NORTH, NORTH QUARTER CORNER SECTION 31, TOWNSHIP 86 NORTH, RANGE 4 WEST OF THE 5TH PRINCIPAL MERIDIAN, JONES COUNTY, IOWA.

CORNERS TO BE INDEXED



PREVIOUSLY RECORDED IN BOOK _____, PAGE _____
 MONUMENT DESCRIPTION AND HOW ESTABLISHED FOUND
 CONC. MONUMENT 27" DOWN 0.7' LT STA. 2+99.3 IN 1968. TIED TO FENCE POSTS AS INDICATED. JONES COUNTY SURVEY CREW RECOVERED MONUMENT IN 1982. TIED TO CONC. MARKERS AS INDICATED. NORTHWEST CORNER SECTION 31, TOWNSHIP 86 NORTH, RANGE 4 WEST OF THE 5TH PRINCIPAL MERIDIAN, JONES COUNTY, IOWA.

CORNERS TO BE INDEXED

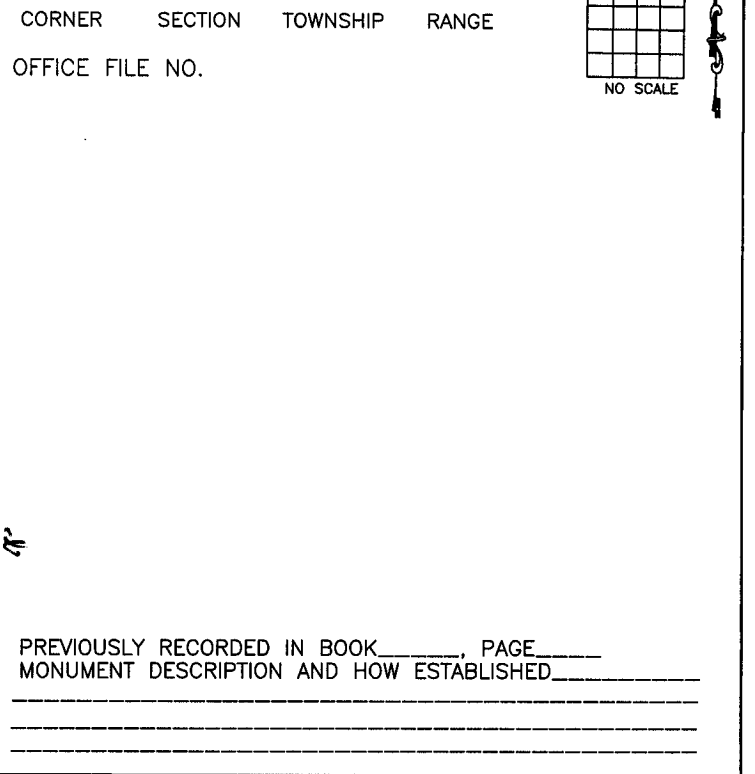


NOTE: SKETCH NOT SHOWN ON INDEX CARD. THIS SKETCH MADE FROM TIE DESCRIPTIONS, AND MAY NOT REPRESENT ACTUAL TOPOGRAPHY IN AREA.

DESCRIPTION OF MONUMENT NOT GIVEN. W1/4 31-86-4

PREVIOUSLY RECORDED IN BOOK _____, PAGE _____
 MONUMENT DESCRIPTION AND HOW ESTABLISHED RESTORED
 DESCRIPTION OF MONUMENT NOT GIVEN. LINN COUNTY SET IN CENTER OF ROAD IN LINE WITH FENCE EAST ON STRAIGHT LINE BETWEEN NW COR. AND SW COR. 31-86-4. WEST QUARTER CORNER SECTION 31, TOWNSHIP 86 NORTH, RANGE 4 WEST OF THE 5TH PRINCIPAL MERIDIAN, JONES COUNTY, IOWA.

CORNERS TO BE INDEXED



~~I hereby declare that this plat, survey or report was made by me or under my direct personal supervision and that I am a duly registered Land Surveyor under the laws of the State of Iowa.~~

Signed: _____

SEAL

JONES COUNTY ENGINEER'S OFFICE

19501 HWY. 64,
 ANAMOSA, IOWA,
 52205 (319)462-3785