

SECTION CORNER CERTIFICATE

OF
 LAND SURVEY MONUMENTS SITUATED IN SECTION 6, TOWNSHIP 86 NORTH,
 RANGE 4 WEST, OF THE FIFTH PRINCIPAL MERIDIAN, JONES, COUNTY, IOWA.

PREVIOUSLY RECORDED IN BOOK _____ AT PAGE _____

FOR RECORDER'S USE

REASON FOR PREPARING CERTIFICATE:

- A) THERE IS NO CERTIFICATE FOR THE CORNER ON FILE WITH THE RECORDER OF THE COUNTY IN WHICH THE CORNER IS LOCATED.
- B) CORNER POSITION DIFFERS FROM THAT SHOWN IN THE PUBLIC RECORDS OF THE COUNTY IN WHICH THE CORNER IS LOCATED.
- C) THE CORNER MONUMENT HAS BEEN REPLACED OR MODIFIED.
- D) THE REFERENCE TIES REFERRED TO IN AN EXISTING PUBLIC RECORD ARE INCORRECT.

1999 3228
 FILED
 RECORDERS OFFICE
 JONES COUNTY IOWA
 99 SEP -8 AM 11:09
 MARIE KRUTZFIELD,
 RECORDER *6.00 Pd*

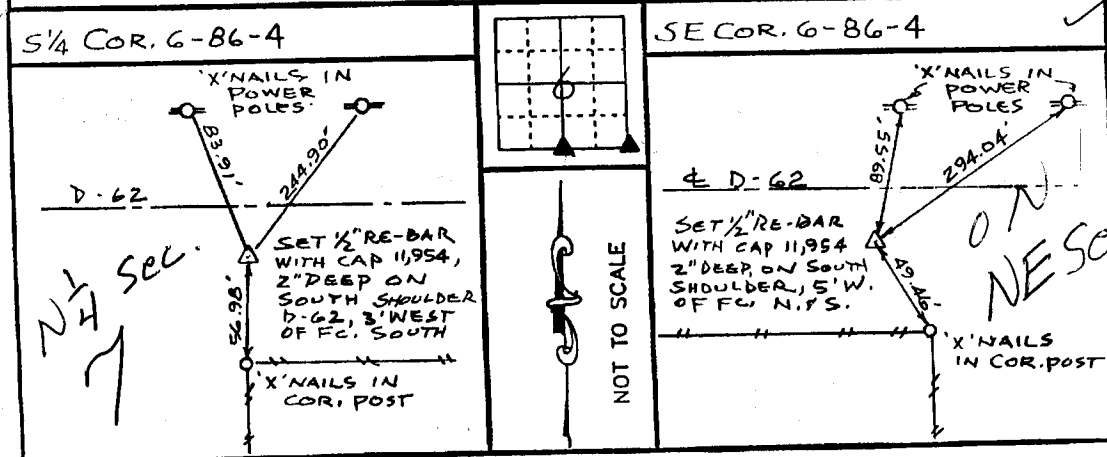
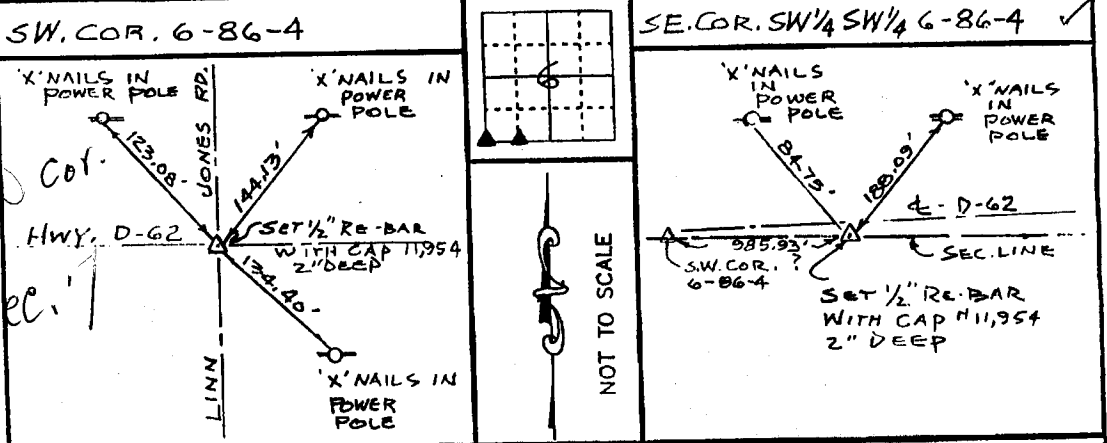
MONUMENT DESCRIPTION AND REMARKS:

SW. COR: SET 1/2" RE-BAR, WITH CAP #11954, 2" DEEP IN INTERSECTION OF ROAD,
 SE COR. SW 1/4 SW 1/4, SET 1/2" RE-BAR WITH CAP #11954, 2" DEEP
 S/4 COR: SET 1/2" RE-BAR WITH CAP #11954, 2" DEEP ON SOUTH SHOULDER D-62, 3' WEST OF FC. SOUTH
 S.E. COR: SET 1/2" RE-BAR WITH CAP #11954, 2" DEEP ON SOUTH SHOULDER D-62, 5' WEST OF
 NORTH - SOUTH FENCE.

RECOVERY TIE DRAWING

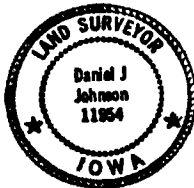
NW Sec. 7

86407a
7b
7c
7e



ON NE Sec. 7

I, DANIEL J. JOHNSON, CERTIFY THAT THE CORNER LOCATION(S) SHOWN ON THIS RECORD WERE DETERMINED BY ME OR UNDER MY DIRECTION AND CONTROL AND THAT THIS U.S. PUBLIC LAND SURVEY MONUMENT RECORD IS CORRECT AND COMPLETE TO THE BEST OF MY KNOWLEDGE AND BELIEF.



Daniel J. Johnson 9-8-99
 DANIEL J. JOHNSON U.S. NO 11954 DATE
 My registration renewal date is Dec. 31, 2000

GOVERNMENT CORNER 1/2" IRON PIN SET CENTERLINE EXISTING FENCE LINE R.O.W. LINE	SHEET NO. _____ U.S. PUBLIC LAND SURVEY RECORD PROJECT NO. _____ JONES CO. ENGINEER	HALL AND HALL ENGINEERS, INC. 209 - 29th Street N.E. CEDAR RAPIDS, IOWA 52402
DWS REC APP	DATE 1-12-96 SCALE NONE	P. NO. _____ COUNTY IOWA P. NO. 5473