

SECTION CORNER CERTIFICATE

OF
 LAND SURVEY MONUMENTS SITUATED IN SECTION 6, TOWNSHIP 86 NORTH,
 RANGE 4 WEST, OF THE FIFTH PRINCIPAL MERIDIAN, JONES, COUNTY, IOWA.

PREVIOUSLY RECORDED IN BOOK AT PAGE

FOR RECORDER'S USE

REASON FOR PREPARING CERTIFICATE:

- A) THERE IS NO CERTIFICATE FOR THE CORNER ON FILE WITH THE RECORDER OF THE COUNTY IN WHICH THE CORNER IS LOCATED.
- B) CORNER POSITION DIFFERS FROM THAT SHOWN IN THE PUBLIC RECORDS OF THE COUNTY IN WHICH THE CORNER IS LOCATED.
- C) THE CORNER MONUMENT HAS BEEN REPLACED OR MODIFIED.
- D) THE REFERENCE TIES REFERRED TO IN AN EXISTING PUBLIC RECORD ARE INCORRECT.

1999 3229

**FILED
 RECORDERS OFFICE
 JONES COUNTY IOWA**

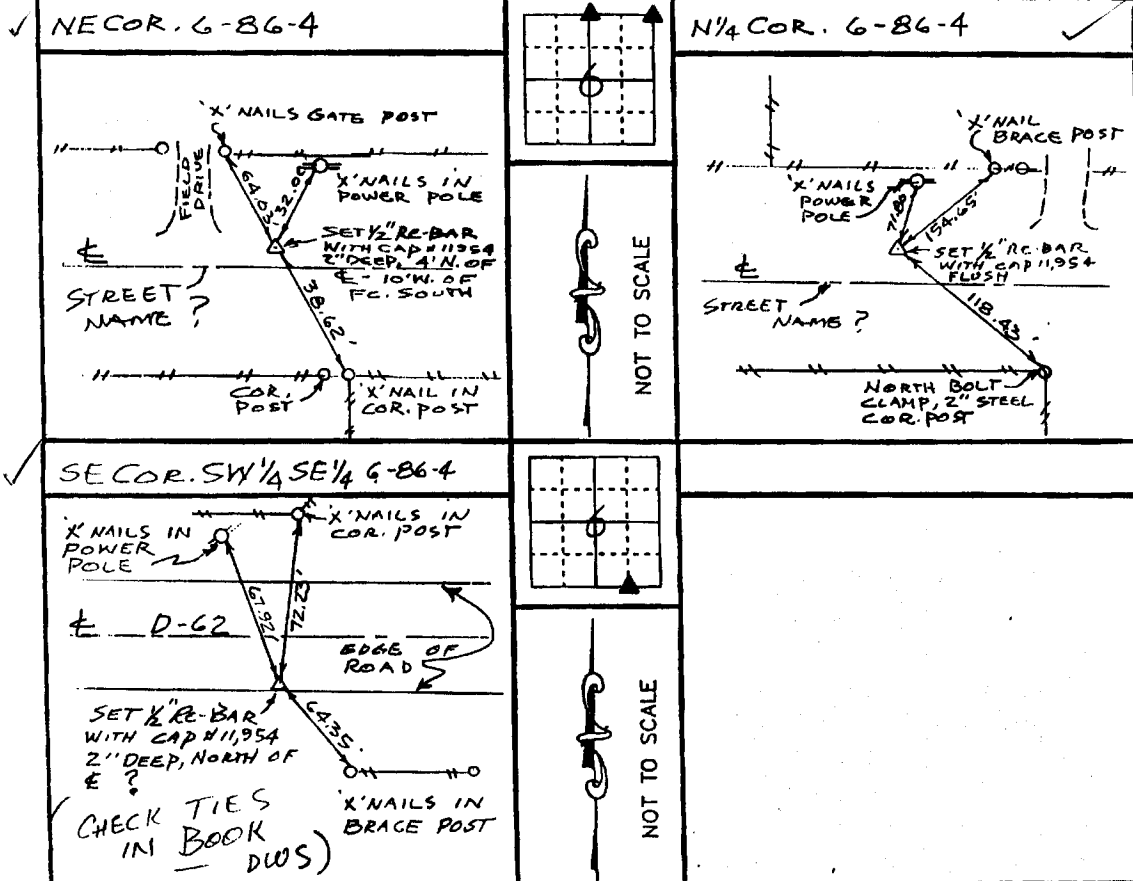
99 SEP -8 AM 11:10

**MARIE KRUTZFIELD
 RECORDER 6.00 P**

MONUMENT DESCRIPTION AND REMARKS :

N¹/₄ COR: SET 1/2" RE-BAR WITH CAP # 11954, FLUSH ON FORESLOPE
NE COR: SET 1/2" RE-BAR WITH CAP # 11954, 2" DEEP, NORTH OF E, 119'± W. OF FC. SOUTH
SE COR: SW 1/4 SE 1/4. SET 1/2" RE-BAR WITH CAP # 11954, 2" DEEP, NORTH OF E ?

RECOVERY TIE DRAWING

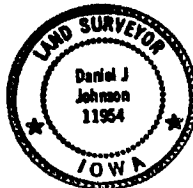


86406e - 090899
 86406c - 090899
 86407d - 090899

I, DANIEL J. JOHNSON, CERTIFY THAT THE CORNER LOCATION(S) SHOWN ON THIS RECORD WERE DETERMINED BY ME OR UNDER MY DIRECTION AND CONTROL AND THAT THIS U.S. PUBLIC LAND SURVEY MONUMENT RECORD IS CORRECT AND COMPLETE TO THE BEST OF MY KNOWLEDGE AND BELIEF.

Daniel J. Johnson 9-2-99
 DANIEL J. JOHNSON L.S. NO 11954 DATE

My registration renewal date is Dec. 31, 2000



GOVERNMENT CORNER 0 1/2" TIE PIN SET --- CENTERLINE - - - EXISTING FENCE LINE - - - R.O.W. LINE	SHEET NO: U.S. PUBLIC LAND SURVEY RECORD PROJECT TITLE: JONES COUNTY ENGINEER	HALL AND HALL ENGINEERS, INC. 209 - 29th Street N.E. CEDAR RAPIDS, IOWA 52402
DWS REC A P DATE 1-12-96 SCALE NONE P NO County P NO 5473		