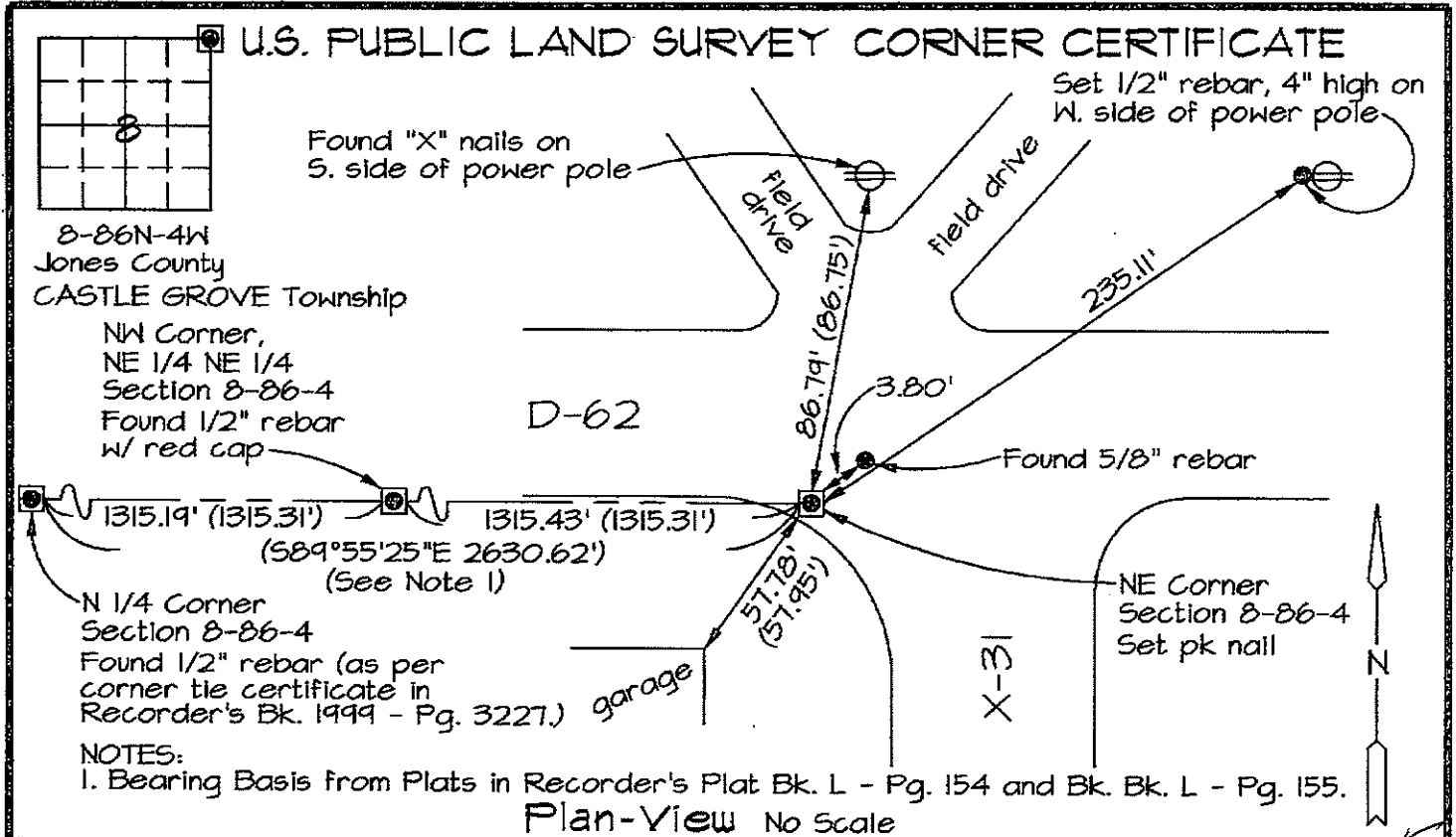


Marie Krutzfield, Recorder  
Jones County, Iowa

Prepared by: Richard M. Kordick, P.E., L.S., 120 East Main, Suite D, Anamosa, IA 52205 Phone: (319) 462-4498



Section corner location: NE Corner, Section 8-86-4

Reason for corner tie:

- A) There is no certificate for the corner on file with the recorder.
- B) Corner position differs from previously recorded certificate recorded in book , page
- C) Corner monument was replaced or modified.
- D) Reference ties in previously recorded certificate recorded in book 1999, page 3184 are incorrect or missing.

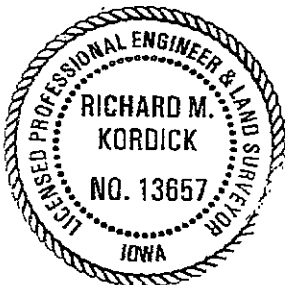
Research at the recorder's office, auditor's office, and engineer's office revealed the following: A section corner certificate in Recorder's Bk. 1999 - Pg. 3184 called for a "Set 1/2" rebar w/ cap #11954, 2" deep" at this corner. A plat in Plat Bk. H - Pg. 85 called for a set stubby nail at this corner. Plats in Plat Bk. L - Pg. 154 and Bk. L - Pg. 155 called for a "Fd. 1/2" rebar w/ cap #11954" at this corner.

Field search performed was as follows:

Field search was performed with a metal detector, excavation and probing. Nothing was found.

Monument found or set:

A pk nail was set as per plats in Recorder's Plat Bk. L - Pg. 154 and Bk. L - Pg. 155.



I hereby certify that this land surveying document was prepared and the related survey work was performed by me or under my direct personal supervision and that I am a duly licensed Land Surveyor under the laws of the State of Iowa.

*Richard M. Kordick* 10/23/2006  
Richard M. Kordick date  
License number 13657  
My license renewal date is December 31, 2007.  
Pages or sheets covered by this seal: 1 of 1

LEGEND:

- Section Corner as noted
- Power Pole
- Section Line
- - - Centerline
- /// Existing Fence
- ( ) Recorded Dist.

<b>Kordick Surveying &amp; Engineering</b> 120 East Main, Suite D Anamosa, Iowa 52205 (319) 462-4498	U.S. Public Land <b>Survey Corner Certificate</b>		Field BK 06094
	Project: Plat of Survey Parcel No. 2006-164 Proprietor: Keven J. Miller and Julie A. Miller		Date 10-23-06
			Job No. 06094
			Sheet 1 of 1

# SECTION CORNER CERTIFICATE

OF  
 LAND SURVEY MONUMENTS SITUATED IN SECTION B, TOWNSHIP B6 NORTH,  
 RANGE 4 WEST, OF THE FIFTH PRINCIPAL MERIDIAN, JONES, COUNTY, IOWA.

PREVIOUSLY RECORDED IN BOOK \_\_\_\_\_ AT PAGE \_\_\_\_\_

FOR RECORDER'S USE

**REASON FOR PREPARING CERTIFICATE:**

- A) THERE IS NO CERTIFICATE FOR THE CORNER ON FILE WITH THE RECORDER OF THE COUNTY IN WHICH THE CORNER IS LOCATED.
- B) CORNER POSITION DIFFERS FROM THAT SHOWN IN THE PUBLIC RECORDS OF THE COUNTY IN WHICH THE CORNER IS LOCATED.
- C) THE CORNER MONUMENT HAS BEEN REPLACED OR MODIFIED.
- D) THE REFERENCE TIES REFERRED TO IN AN EXISTING PUBLIC RECORD ARE INCORRECT.

**1999 3184**  
 FILED  
 RECORDERS OFFICE  
 JONES COUNTY IOWA  
 99 SEP -8 AM 10: 16  
 MARIE KRUTZFELD  
 RECORDER

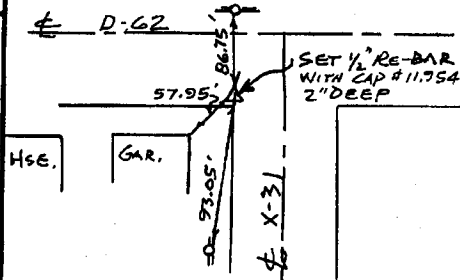
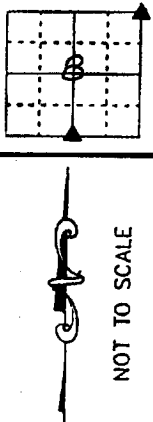
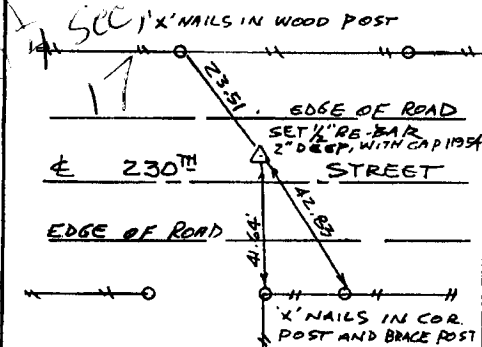
**MONUMENT DESCRIPTION AND REMARKS:**

S/4 COR: SET 1/2" RE-BAR, 2" DEEP, WITH CAP #11,954, NORTH EDGE OF ROAD  
 N.E. COR:

## RECOVERY TIE DRAWING

S/4 COR. B-86-4

NE COR. B-86-4 ✓



I, DANIEL J. JOHNSON, CERTIFY THAT THE CORNER LOCATION(S) SHOWN ON THIS RECORD WERE DETERMINED BY ME OR UNDER MY DIRECTION AND CONTROL AND THAT THIS U.S. PUBLIC LAND SURVEY MONUMENT RECORD IS CORRECT AND COMPLETE TO THE BEST OF MY KNOWLEDGE AND BELIEF.

*Daniel J. Johnson* 9-8-99  
 DANIEL J. JOHNSON L.S. NO 11954 DATE



PROPERTY GOVERNMENT CORNER 5/8" IRON SET CENTERLINE EXISTING FENCE LINE R.O.W. LINE	SHEET NO.	U.S. PUBLIC LAND SURVEY RECORD	HALL AND HALL ENGINEERS, INC. 209 28TH STREET N.E. CEDAR RAPIDS, IOWA 52402 (319) 362-9348
	PROJECT NO.	JONES COUNTY ENGINEER	
OWNER	DATE	SCALE	SHEET NO.
NDWS	1-16-96	NONE	5473

86408e-090899  
 86417c-090899