

FILED  
RECORDERS OFFICE  
JONES COUNTY IOWA

05 APR 13 AM 8:43

MARIE KRUTZFIELD 7.00 Pd  
RECORDER

J.D. TJEPKES, LS. 14807, 23428 RIDGE ROAD, ANAMOSA, IOWA, 52205 (319-462-6067)

# UNITED STATES PUBLIC LAND SURVEY CORNER CERTIFICATE

LAND SURVEY MONUMENTS SITUATED IN SECTION 19, TOWNSHIP 85  
NORTH, RANGE 1 WEST OF THE 5TH P.M., JONES COUNTY, IOWA

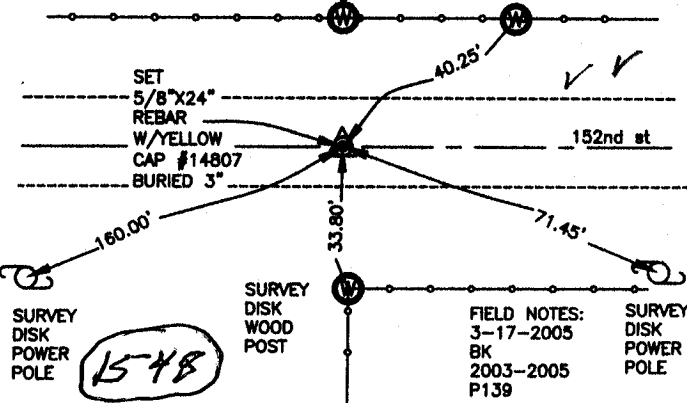
### CORNERS TO BE INDEXED

CORNER SECTION TOWNSHIP RANGE  
NW-SE-SW 19 85N 1W  
OFFICE FILE NO.



85119a-041205 tie

SURVEY DISK  
WOOD BRACE  
POST



FIELD NOTES:  
3-17-2005  
BK  
2003-2005  
P139

PREVIOUSLY RECORDED IN BOOK NA, PAGE NA  
MONUMENT DESCRIPTION AND HOW ESTABLISHED  
PER BREAKDOWN OF SW 1/4 SECTION 19 T85N R1W, SET 5/8"X24" REBAR  
W/YELLOW CAP #14807 IN ROADBED BURIED 3". TIES AS INDICATED FOR NW  
SE SW SECTION 19 T85N R1W.

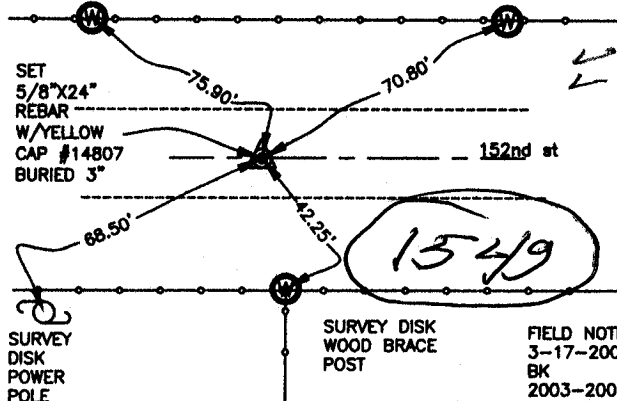
### CORNERS TO BE INDEXED

CORNER SECTION TOWNSHIP RANGE  
NE-SE-SW 19 85N 1W  
OFFICE FILE NO.



85119f-041205 tie

SURVEY DISK  
WOOD POST



FIELD NOTES:  
3-17-2005  
BK  
2003-2005  
P140

PREVIOUSLY RECORDED IN BOOK NA, PAGE NA  
MONUMENT DESCRIPTION AND HOW ESTABLISHED  
PER BREAKDOWN OF SW 1/4 SECTION 19 T85N R1W, SET 5/8"X24" REBAR  
W/YELLOW CAP #14807 IN ROADBED BURIED 3". TIES AS INDICATED FOR  
NE-SE-SW SECTION 19 T85N R1W.

### CORNERS TO BE INDEXED

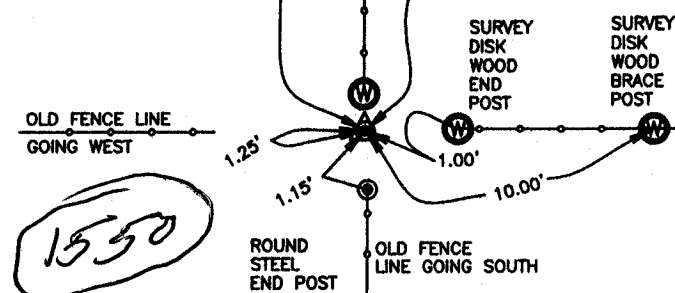
CORNER SECTION TOWNSHIP RANGE  
N1/4 19 85N 1W  
OFFICE FILE NO.



85119c-041205 tie

FD LIMESTONE,  
SET 5/8"X24"  
REBAR  
W/YELLOW CAP  
#14807

FIELD NOTES:  
3-17-2005  
BK  
2003-2005  
P142



FIELD NOTES:  
3-17-2005  
BK  
2003-2005  
P141

PREVIOUSLY RECORDED IN BOOK NA, PAGE NA  
MONUMENT DESCRIPTION AND HOW ESTABLISHED  
FD LIMESTONE BETWEEN FENCE CORNERS @ N1/4 SECTION 19, SET  
5/8"X24" REBAR W/YELLOW CAP #14807 ON SOUTH SIDE OF STONE. TIES  
AS INDICATED FOR N 1/4 SECTION 19 T85N R1W.

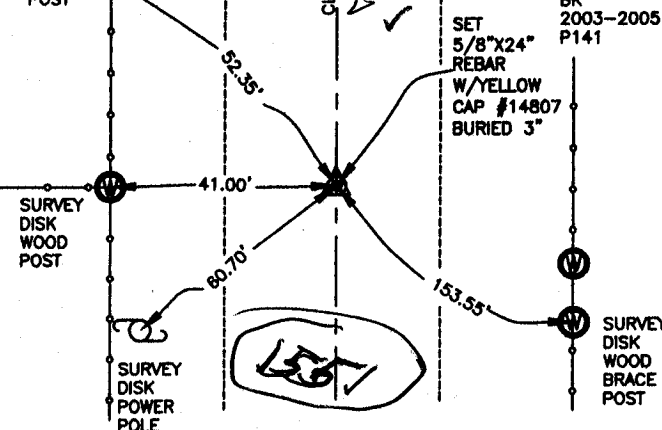
### CORNERS TO BE INDEXED

CORNER SECTION TOWNSHIP RANGE  
E 1/4 19 85N 1W  
OFFICE FILE NO.



85119o-041205 tie

SURVEY DISK  
WOOD POST



FIELD NOTES:  
3-17-2005  
BK  
2003-2005  
P141

PREVIOUSLY RECORDED IN BOOK NA, PAGE NA  
MONUMENT DESCRIPTION AND HOW ESTABLISHED  
PER PHYSICAL EVIDENCE, CL 60th AVE AND OLD FENCE LINE GOING WEST,  
SET 5/8"X24" REBAR W/YELLOW CAP #14807 BURIED 3". TIES AS INDICATED  
FOR E 1/4 SECTION 19 T85N R1W.

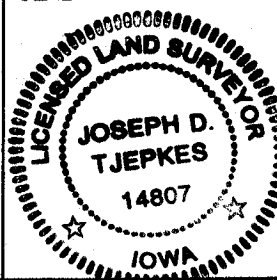
I hereby declare that this plat, survey or report was made by me or under my direct personal supervision and that I am a duly registered Land Surveyor under the laws of the State of Iowa.

Signed

*Joseph D. Tjepkes* 4-12-05

Joseph D. Tjepkes L.S. Iowa Reg. No. 14807  
My Registration Renewal Date is December 31, 2006

SEAL



J.D. TJEPKES LS 14807  
23428 RIDGE ROAD  
ANAMOSA, IOWA, 52205  
(319-462-3785)