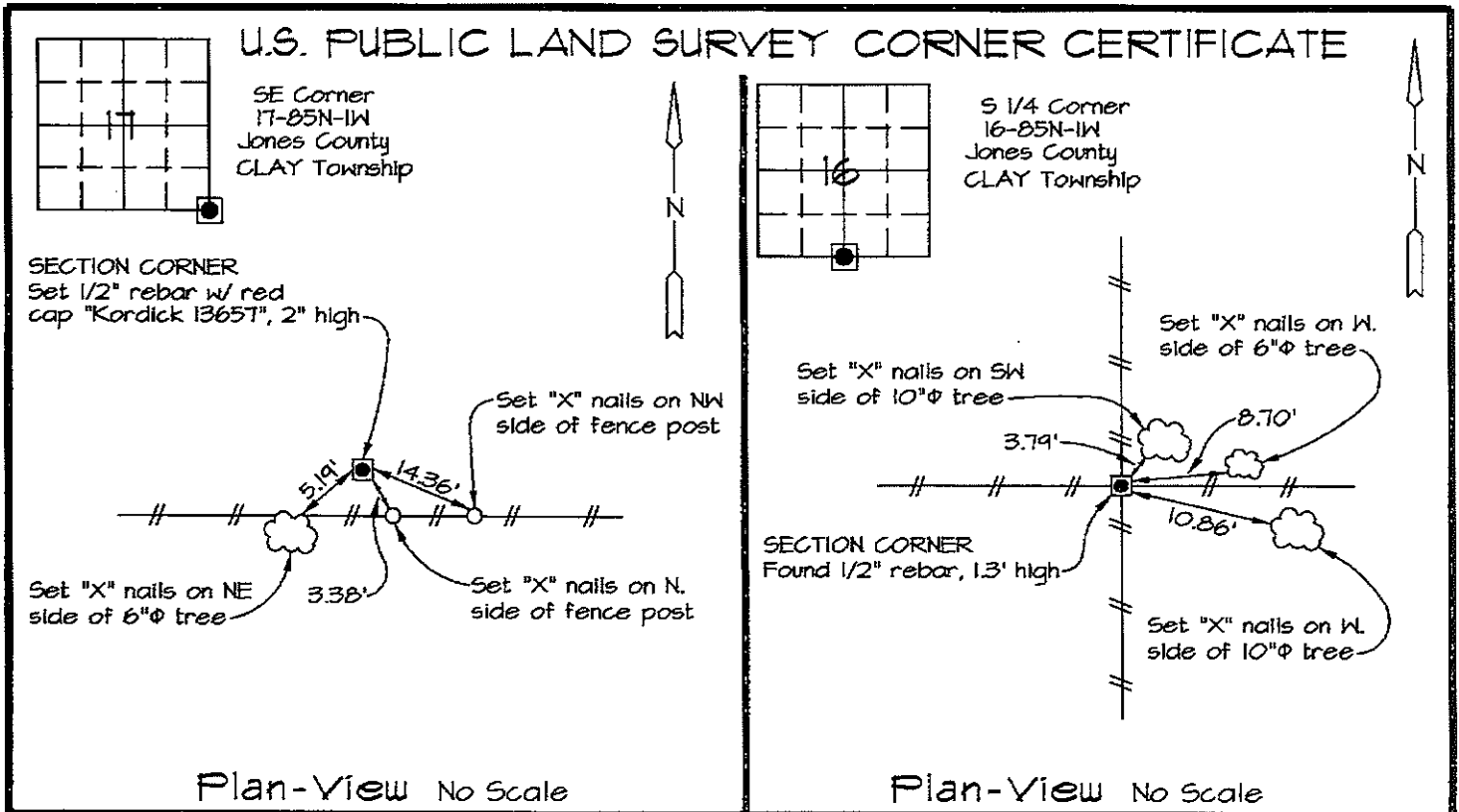


Marie Krutzfield, Recorder  
Jones County, Iowa

Prepared by: Richard M. Kordick, P.E., L.S., 120 East Main, Suite D, Anamosa, IA 52205 Phone: (319) 462-4498



Reason for corner tie:

- A) There is no certificate for the corner on file with the recorder.
- B) Corner position differs from previously recorded certificate recorded in book , page
- C) Corner monument was replaced or modified.
- D) Reference ties in previously recorded certificate recorded in book , page are incorrect or missing.

Research at the recorder's office, auditor's office, and engineer's office revealed the following:

None.

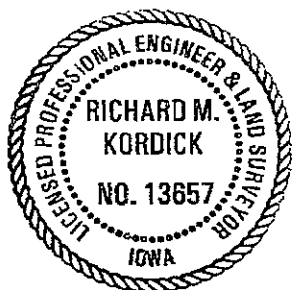
A plat in Recorder's Bk. H - Pg. 15 referenced this corner. A plat in Recorder's Bk. H - Pg. 69 referenced this corner.

Field search performed was as follows:  
Field search was performed with a metal detector, probing and excavation. Nothing was found.

Field search performed was as follows:  
Field search was performed with a metal detector.

Monument found or set:  
A 1/2" rebar with red cap "Kordick 13657" was set on-line and double the distance from the S 1/4 Corner thru the SW Corner, SE 1/4 SE 1/4.

Monument found or set:  
A 1/2" rebar was found and used as the corner.



I hereby certify that this land surveying document was prepared and the related survey work was performed by me or under my direct personal supervision and that I am a duly licensed Land Surveyor under the laws of the State of Iowa.

*Richard M. Kordick* 1/14/2008  
Richard M. Kordick date  
License number 13657  
My license renewal date is December 31, 2009.  
Pages or sheets covered by this seal: 1 of 1

**LEGEND:**

- Section Corner as noted
- Power Pole
- Section line
- Centerline
- Existing Fence
- Recorded Dist.

**Kordick Surveying & Engineering**  
120 East Main, Suite D  
Anamosa, Iowa 52205  
(319) 462-4498

U.S. Public Land  
Survey Corner Certificate

Project: Plat of Survey  
Parcel No. 2007-158  
Proprietor: Michael R Meade and  
Brenda L. Meade

Field BK  
07083  
Date  
1-14-08  
Job No.  
07083  
Sheet  
1 of 1