

Jones County Marie Krutzfield Recorder
 Fee Book 2013 1991
 07/31/2013 @1242PM # Pages 1
 ZSC SEC COR CERT
 Total Fees: \$7.00

Prepared by: SCHNEIDER Land Surveying and Planning, Inc. P.O. Box 128 Farley, Iowa 52046 563-744-3631

UNITED STATES PUBLIC LAND SURVEY CORNER CERTIFICATE OF

Land Survey Monuments situated in Section 36, Township 85 North, Range 1 West of the Fifth Principal Meridian, Jones County, Iowa.
 Previously recorded (NONE OF RECORD)

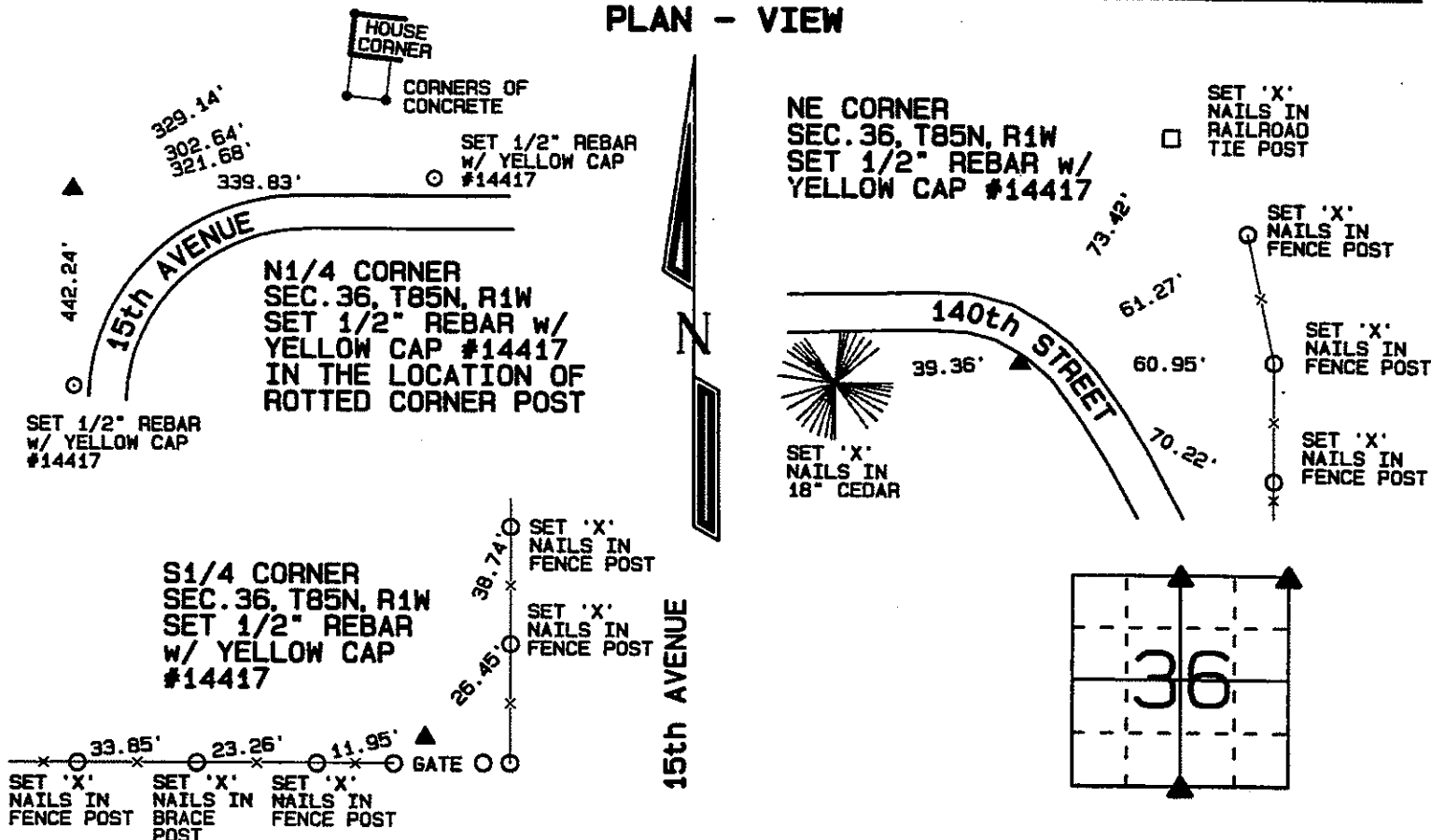
(BOOK, PAGE / INST. NO. / CABINET, SLIDE)

(Show reason for preparing this certificate, the evidence and detailed procedures used in establishing the corner positions and monumentation found or placed.)

Monument Description and Remarks: THE N1/4 CORNER OF SECTION 36, T85N, R1W WAS ESTABLISHED AT THE LOCATION OF A ROTTED CORNER POST WITH REMNANTS OF BURIED WIRE NORTH, SOUTH AND EAST OF THE CORNER POST.

THE NE CORNER OF SECTION 36, T85N, R1W WAS ESTABLISHED AS DESCRIBED IN A QUIT CLAIM DEED FILED APRIL 6, 2009 AS INST. NO. 2009-1204. THE CORNER IS DESCRIBED AS BEING 210' NORTH OF THE SOUTH LINE AND 350' EAST OF THE NORTHWEST CORNER OF THE 2 ACRE PARCEL. THE POSITION IS WITHIN 4.5 FEET OF A LINE FROM THE MONUMENT AT THE SOUTHWEST OF SAID SECTION 36 TO THE OCCUPATION FENCE INTERSECTION AT THE E1/4 CORNER OF SECTION 35, T85N, R1W. THE S1/4 CORNER OF SECTION 36, T85N, R1W WAS ESTABLISHED BY EXTENDING A LINE AND DOUBLING THE DISTANCE FROM THE MONUMENT AT THE SOUTHWEST CORNER OF SAID SECTION 36 THROUGH THE MONUMENT AT THE QUARTER-QUARTER CORNER AT THE NW CORNER OF THE NORTHEAST QUARTER OF THE NORTHEAST QUARTER OF SECTION 1, T84N, R1W TO ESTABLISHED THE THEORETICAL N1/4 CORNER OF SAID SECTION 1. THE S1/4 CORNER WAS PLACED 18.48' EAST OF THE N1/4 CORNER OF SAID SECTION 1 AS ILLUSTRATED ON THE PLAT OF SURVEY OF SAID SECTION 1 PREPARED FOR THE DISTRICT COURT OF JONES COUNTY CASE OF LEWIS DOHL ET. vs. ELSPY STREET AND JONES COUNTY BY T.R. WARRINER AND DATED MAY 1915.

PLAN - VIEW

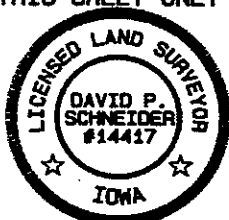


I hereby certify that this land surveying document was prepared and the related survey work was performed by me or under my direct personal supervision and that I am a duly licensed Land Surveyor under the laws of the State of Iowa.

David P. Schneider 7/30/2013
 David P. Schneider P.L.S. #14417 Date:
 My license renewal date is December 31, 2013.

Pages or sheets covered by this seal: THIS SHEET ONLY

SCHNEIDER
 Land Surveying & Planning, Inc.
 P.O. Box 128 Farley, Iowa 52046
 Ph. #563-744-3631 Fax#563-744-3629



List Corners to be Indexed

Corners	Section	Twp	Range
N1/4 CORNER	36	85N	1W
NE CORNER	36	85N	1W
S1/4 CORNER	36	85N	1W