

Marie Krutzfield, Recorder
 Jones County, Iowa

Prepared by Wm. Burger LandSurveyor 510 3rd Street West Court, Worthington, Iowa Phone 563 - 855 2028

UNITED STATES PUBLIC LAND SURVEY CORNER CERTIFICATE

Land Survey Monuments situated in Section 3, Township 85N, Range 1W, of the Fifth Principal Meridian, Jones County, Iowa. Previously recorded in N/A in the Office of the County Recorder

Monument Description and Remarks: (No Corner Certificates found at the County Recorders Office)

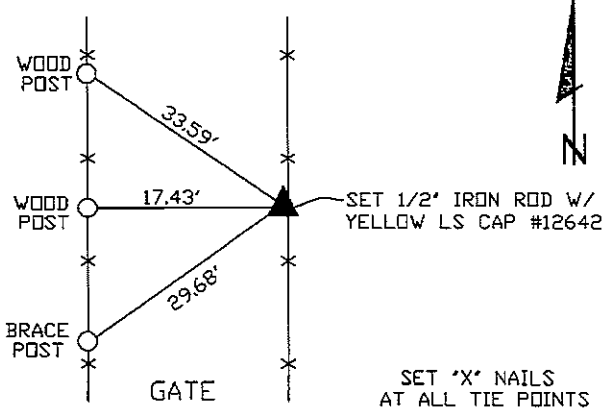
CENTER OF SECTION - SET 1/2" IRON ROD W/ YELLOW LS CAP #12642 - RUN STRAIGHT LINES FROM OPPOSITE 1/4 CORNERS TO THE WEST AND EAST AND USED EXISTING FENCELINE EVIDENCE TO THE SOUTH AND SET AT POINT OF INTERSECTION

N1/4 CORNER - SET 1/2" IRON ROD W/ YELLOW LS CAP #12642 - USED EXISTING FENCELINE EVIDENCE AND SET AT TREE CORNER

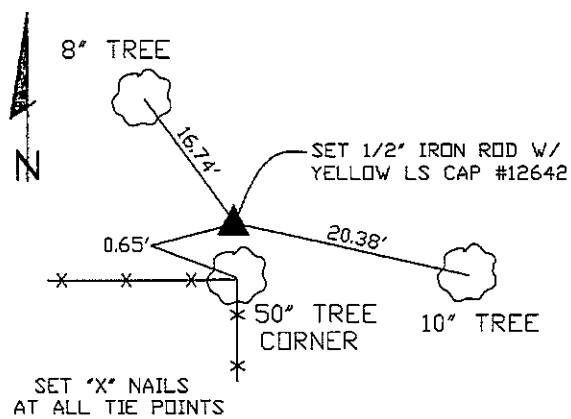
NW CORNER SW1/4 NE1/4 - SET 1/2" IRON ROD W/ YELLOW LS CAP #12642 - SET ON LINE AND MIDWAY BETWEEN THE N1/4 CORNER AND THE CENTER OF SECTION

PLAN VIEW

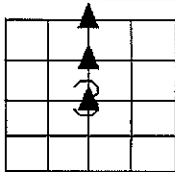
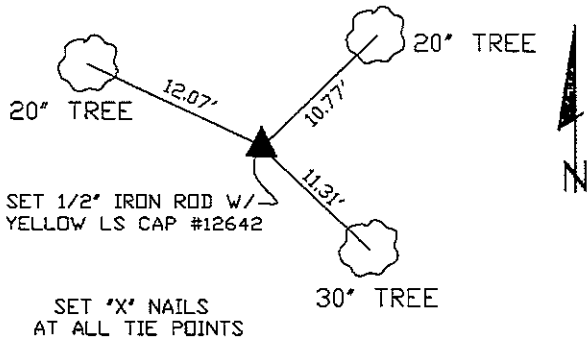
CENTER OF SECTION



N1/4 CORNER



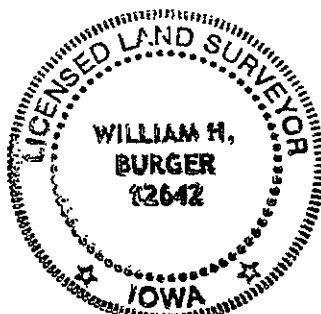
NW CORNER SW1/4 NE1/4



SEC. 3 TWP. 85N RANGE 1W

CORNERS TO BE INDEXED

CENTER OF SECTION	3	85N	1W
N1/4 CORNER	3	85N	1W
NW CORNER SW1/4 NE1/4	3	85N	1W



I hereby certify that this land surveying document was prepared and related survey work was performed by me or under my direct personal supervision and that I am a duly licensed Land Surveyor under the laws of the State of Iowa.

William H. Burger 4/15/07
 William H. Burger Date

License number 12642

My license renewal date is December 31, 2008

Pages or Sheets covered by this seal: Sheet 1 of 1