

UNITED STATES PUBLIC LAND SURVEY CORNER CERTIFICATE

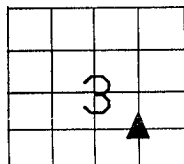
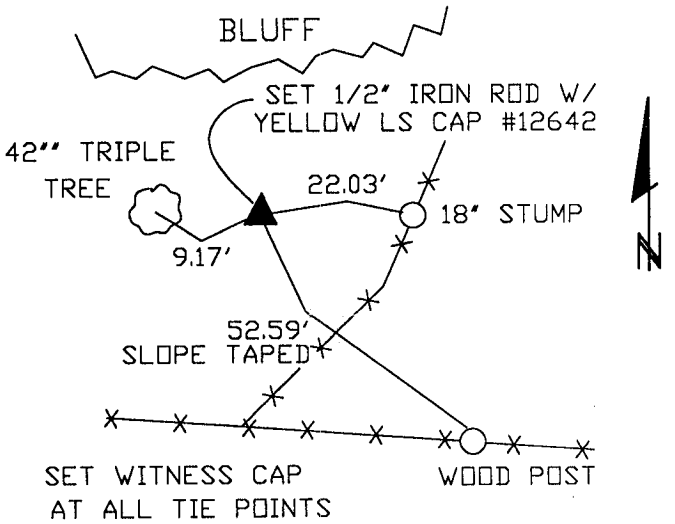
Land Survey Monuments situated in Section 3, Township 85N, Range 1W, of the Fifth Principal Meridian, Jones County, Iowa. Previously recorded in N/A in the Office of the County Recorder

Monument Description and Remarks: (No Corner Certificates found at the County Recorders Office)

SE CORNER NW1/4 SE1/4 - SET 1/2" IRON ROD W/YELLOW LS CAP #12642 - RUN STRAIGHT LINES FROM OPPOSITE 1/4 1/4 CORNERS AND SET MONUMENT AT POINT OF INTERSECTION

PLAN VIEW

NE CORNER NW1/4 SW1/4



SEAL

SEC. 3 TWP. 85N RANGE 1W

CORNERS TO BE INDEXED

SE CORNER NW1/4 SE1/4 3 85N 1W

I hereby certify that this land surveying document was prepared and related survey work was performed by me or under my direct personal supervision and that I am a duly licensed Land Surveyor under the laws of the State of Iowa.

William H. Burger 4/22/02
William H. Burger Date

License number 12642

My license renewal date is December 31, 2002

Pages or Sheets covered by this seal: Sheet 1 of 1