

COPY

Jones County Marie Krutzfield Recorder
Fee Book 2012 2184
07/30/2012 @0124PM # Pages 1
ZSC SEC COR CERT
Total Fees: \$7.00

PREPARED BY: MICHAEL J. WEBER, WEBER SURVEYING, LLC, 26789 46TH AVE, BERNARD, IA 52032 (563) 879-4173

UNITED STATES PUBLIC LAND SURVEY CORNER CERTIFICATE OF

LAND SURVEY MONUMENTS SITUATED IN SECTION 34, TOWNSHIP 86 NORTH, RANGE 1 WEST
OF THE FIFTH PRINCIPAL MERIDIAN, JONES COUNTY, IOWA.
PREVIOUSLY RECORDED NONE UNLESS OTHERWISE NOTED

(book, page, document number, etc.)

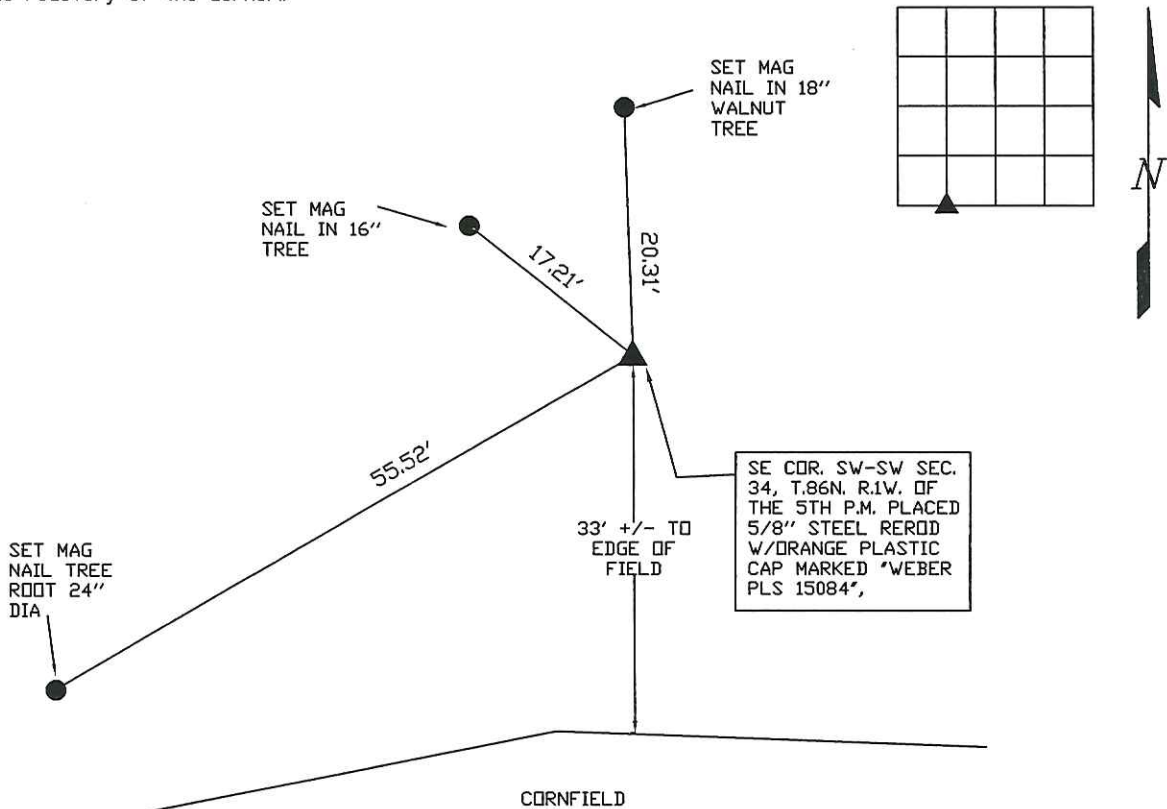
(Show reason for preparing this certificate, the evidence and detailed procedures used in establishing the corner positions and monumentation found or placed.)

Monument Description and Remarks:

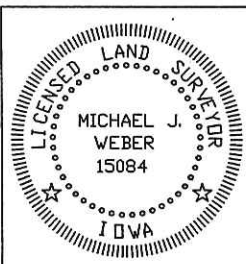
SE COR. SW-SW SEC. 34, T.86N. R.1W. OF THE 5TH P.M. PLACED 5/8" STEEL REROD W/ORANGE PLASTIC CAP MARKED "WEBER PLS 15084", ESTABLISHED CORNER BY INTERSECTING THE OCCUPATION FENCELINE FROM THE NORTH WITH THE LINE BETWEEN THE NORTH 1/4, SEC. 3, T.85N. R.1W. OF THE 5TH P.M. FOUND 1/2" STEEL REROD W/YELLOW PLASTIC CAP NO 12642 PER SEC. COR. CERT. DOC. NO 2007 3740 AND THE NE COR. SEC. 4, T.85N. R.1W. OF THE 5TH P.M. FOUND 5/8" STEEL REROD W/ORANGE PLASTIC CAP NO. 11310 PER SEC COR CERT DOC. NO. 2010 1279.

PLAN - VIEW

(Show a minimum of three reference ties to durable physical objects, relevant monuments and physical conditions that will enable recovery of the corner.)



DWG NO: 2012\MAN-ERIC\DWG\PARCEL 2012-79



I HEREBY CERTIFY THAT THIS LAND SURVEYING DOCUMENT WAS PREPARED AND THE RELATED SURVEY WORK WAS PERFORMED BY ME OR UNDER MY DIRECT PERSONAL SUPERVISION AND THAT I AM A DULY LICENSED LAND SURVEYOR UNDER THE LAWS OF THE STATE OF IOWA.

Michael J. Weber July 27, 2012
MICHAEL J. WEBER (DATE)
LICENSE NUMBER 15084

MY LICENSE RENEWAL DATE IS DECEMBER 31, 2013

SHEETS COVERED BY THIS SEAL: This sheet

List Corners to be Indexed
Corner Sec Twp Range
SE Cor. SW-SW 34 86N 1W