

COPY

Jones County  
Marie Krutzfield, Recorder  
Fee Book 2010 1288

05/19/2010 @1240PM  
ZSC SEC COR CERT  
Book: Page: # Pages: 3  
Total Fees: \$0.00

PREPARED BY  
CLARENCE J. WALTON, JONES COUNTY ENGINEER'S OFFICE, 19501 HWY. 64, ANAMOSA, IOWA, 52205 (319) 462-3785

# UNITED STATES PUBLIC LAND SURVEY CORNER CERTIFICATE

LAND SURVEY MONUMENTS SITUATED IN SECTION 3, TOWNSHIP 85 NORTH,  
RANGE 1 WEST OF THE 5TH PRINCIPAL MERIDIAN, JONES COUNTY, IOWA.

NE CORNER SECTION 3-T85N-R1W

STATE PLANE COORDINATE

NAD 83 IOWA NORTH

N 3549318.83

E 5615530.37

N 1/4 CORNER SECTION 3-T85N-R1W

STATE PLANE COORDINATE

NAD 83 IOWA NORTH

N 3549275.50

E 5612894.40

NE CORNER SECTION 4-T85N-R1W

STATE PLANE COORDINATE

NAD 83 IOWA NORTH

N 3549232.31

E 5610258.43

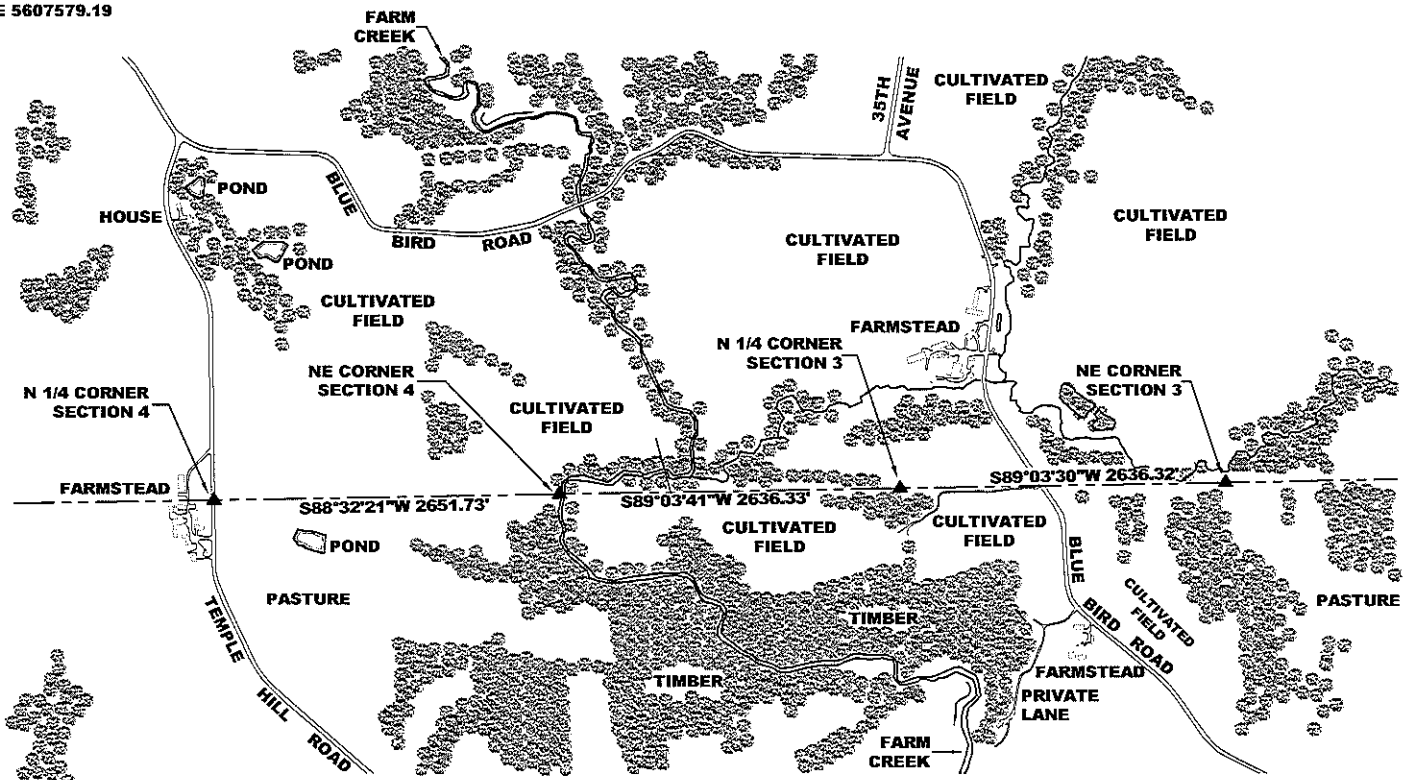
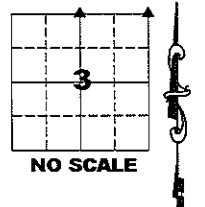
N 1/4 CORNER SECTION 4-T85N-R1W

STATE PLANE COORDINATE

NAD 83 IOWA NORTH

N 3549164.24

E 5607579.19



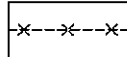
NOTES:

- 1) THE STATE PLANE COORDINATES AS SHOWN ARE FOR CONVENIENCE ONLY. THE TIES AS SHOWN SHOULD BE USED TO REPLACE THE CORNER, IF DESTROYED.
- 2) COORDINATES AS SHOWN ARE GRID COORDINATES AND BASED ON JONES COUNTY G.P.S. CONTROL NETWORK WHICH IN TURN IS BASED ON NAD 83 IOWA NORTH DATUM.
- 3) BASIS OF BEARINGS ARE BASED ON JONES COUNTY G.P.S. CONTROL NETWORK.
- 4) ALL MEASUREMENTS ARE IN FEET AND DECIMALS THEREOF. DISTANCES ON THIS COVER SHEET ARE GRID DISTANCES.
- 5) APPROXIMATE SCALE IS GIVEN IN ORDER TO FACILITATE NAVIGATION TO CORNERS IN CASE GPS IS NOT USED.

### LEGEND



HARDWOOD TIMBER



FENCE LINE

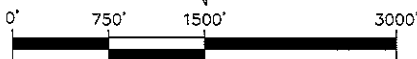
( )

RECORDED AS

[ ]

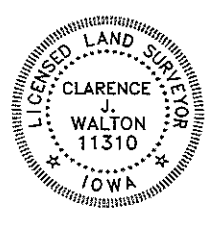
PER ORIGINAL GOVERNMENT SURVEY FIELD NOTES

N



APPROXIMATE SCALE: 1" = 1500'

PAGE 1 of 3



I hereby certify that this land surveying document and the related survey work was performed by me or under my direct personal supervision and that I am a duly registered Land Surveyor under the laws of the State of Iowa.

Signed:

*Clarence J. Walton* 5/19/10

Clarence J. Walton, L.S.  
My Registration Renewal Date is December 31, 2011  
Iowa License Number 11310  
Pages or sheets covered by this seal: 1 of 3.

### JONES COUNTY ENGINEER'S OFFICE



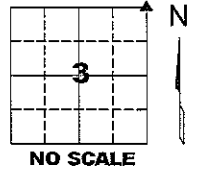
19501 HWY. 64, ANAMOSA, IOWA 52205  
(319) 462-3785

# UNITED STATES PUBLIC LAND SURVEY CORNER CERTIFICATE

**LAND SURVEY MONUMENTS SITUATED IN SECTION 3, TOWNSHIP 85 NORTH,  
 RANGE 1 WEST OF THE 5TH PRINCIPAL MERIDIAN, JONES COUNTY, IOWA.**

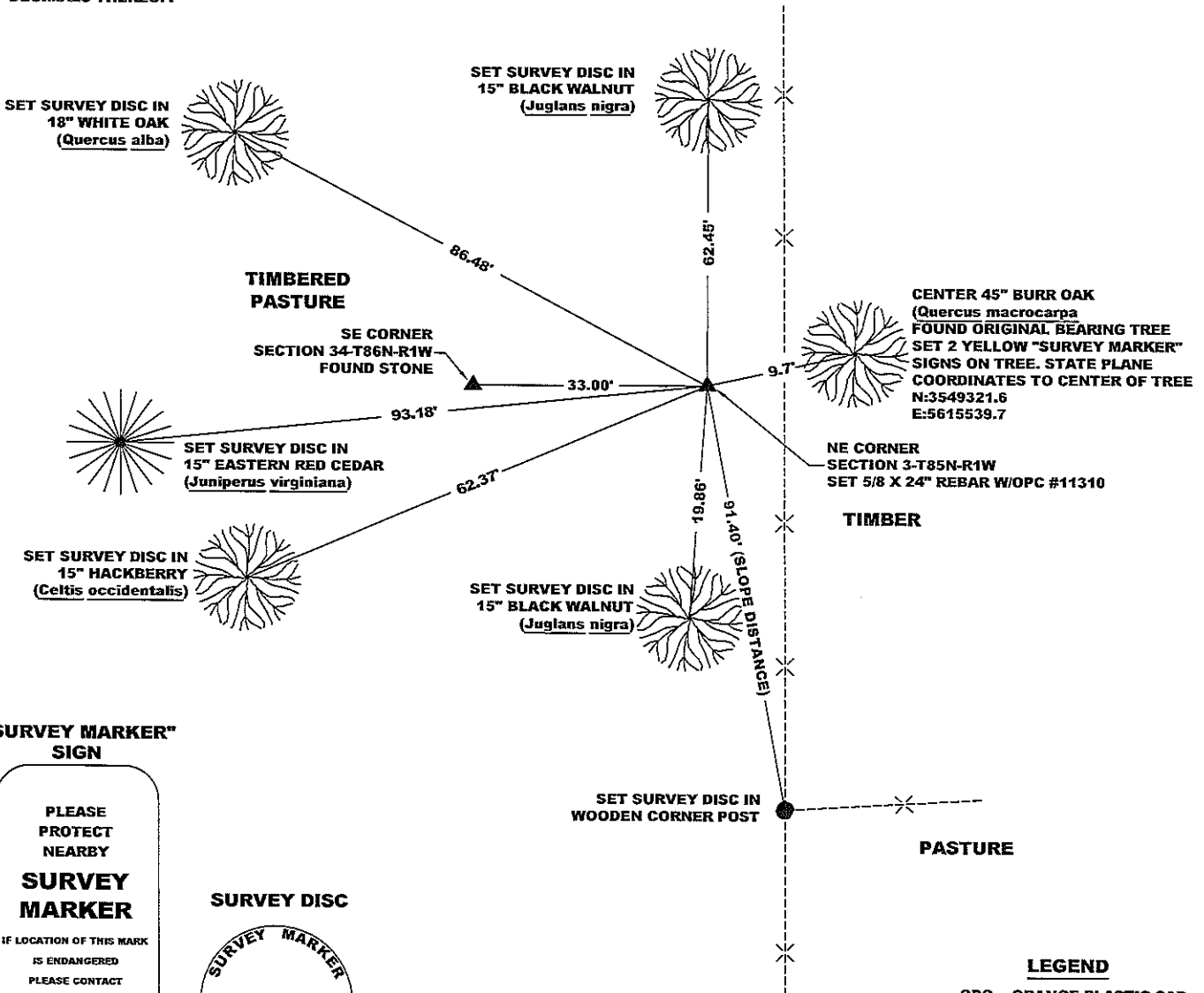
STATE PLANE COORDINATE  
 NAD 83 IOWA NORTH  
 N 3549318.83  
 E 5615530.37

CORNER SECTION TOWNSHIP RANGE  
 NE CORNER 3 T85N R1W



**NOTES:**

- 1) THE STATE PLANE COORDINATES AS SHOWN ARE FOR CONVENIENCE ONLY. THE TIES AS SHOWN SHOULD BE USED TO REPLACE THE CORNER, IF DESTROYED.
- 2) COORDINATES AS SHOWN ARE GRID COORDINATES AND BASED ON JONES COUNTY G.P.S. CONTROL NETWORK WHICH IN TURN IS BASED ON NAD 83 IOWA NORTH DATUM.
- 3) ALL MEASUREMENTS ARE IN FEET AND DECIMALS THEREOF.



**"SURVEY MARKER" SIGN**

PLEASE PROTECT NEARBY

**SURVEY MARKER**

IF LOCATION OF THIS MARK IS ENDANGERED PLEASE CONTACT JONES COUNTY ENGINEER'S OFFICE 319-462-3785

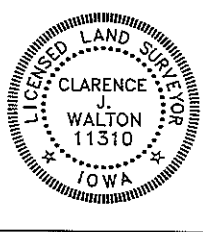


- LEGEND**
- OPC ORANGE PLASTIC CAP
  - ( ) RECORDED AS
  - [ ] PER ORIGINAL GOVERNMENT SURVEY FIELD NOTES

**PAGE 2 of 3**

**PREVIOUSLY RECORDED IN N/A**  
**MONUMENT DESCRIPTION AND HOW ESTABLISHED** SET 5/8" X 24" REBAR WITH ORANGE PLASTIC CAP # 11310 AT CLOSING DISTANCE OF 33.00' (50 LINKS) EAST OF SE CORNER OF SECTION 34-T86N-R1W PER ORIGINAL GOVERNMENT FIELD NOTES ON LINE BETWEEN THE SE CORNER OF SAID SECTION 35 AND THE S 1/4 CORNER OF SECTION 34-T86N-R1W FLUSH WITH GROUND. SET STEEL FENCE POST WITH YELLOW "SURVEY MARKER" SIGN IN CORNER POST AS A WITNESS TO THIS SECTION CORNER.

FIELD BOOK 344, PAGE 71. DATE OF SURVEY: 11/4/09



I hereby certify that this land surveying document and the related survey work was performed by me or under my direct personal supervision and that I am a duly registered Land Surveyor under the laws of the State of Iowa.  
 Signed: *Clarence J. Walton* 5/19/10  
 Clarence J. Walton, L.S.  
 My Registration Renewal Date is December 31, 2011  
 Iowa License Number 11310  
 Pages or sheets covered by this seal: 2 of 3.

- A. THERE IS NO CERTIFICATE FOR THE CORNER ON FILE WITH THE RECORDER OF THE COUNTY IN WHICH THE CORNER IS LOCATED.
- B. THE CORNER MONUMENT HAS BEEN REPLACED OR MODIFIED.
- C. THE SURVEYOR IN RESPONSIBLE CHARGE OF THE LAND SURVEYING ACCEPTS A CORNER POSITION THAT DIFFERS FROM THAT SHOWN IN THE PUBLIC RECORDS OF THE COUNTY IN WHICH THE CORNER IS LOCATED.
- D. THE REFERENCE TIES REFERRED TO IN AN EXISTING PUBLIC RECORD NO LONGER EXIST.
- E. EXISTING CORNER TIES UPDATED.

CORNERS TO BE INDEXED			
CORNER	SECTION	TOWNSHIP	RANGE
NE CORNER	3	85N	1W
NW CORNER	2	85N	1W

**JONES COUNTY ENGINEER'S OFFICE**

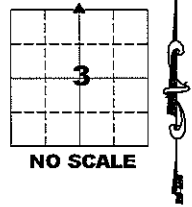
19501 HWY. 64, ANAMOSA, IOWA 52205  
 (319) 462-3785

# UNITED STATES PUBLIC LAND SURVEY CORNER CERTIFICATE

LAND SURVEY MONUMENTS SITUATED IN SECTION 3, TOWNSHIP 85 NORTH,  
 RANGE 1 WEST OF THE 5TH PRINCIPAL MERIDIAN, JONES COUNTY, IOWA.

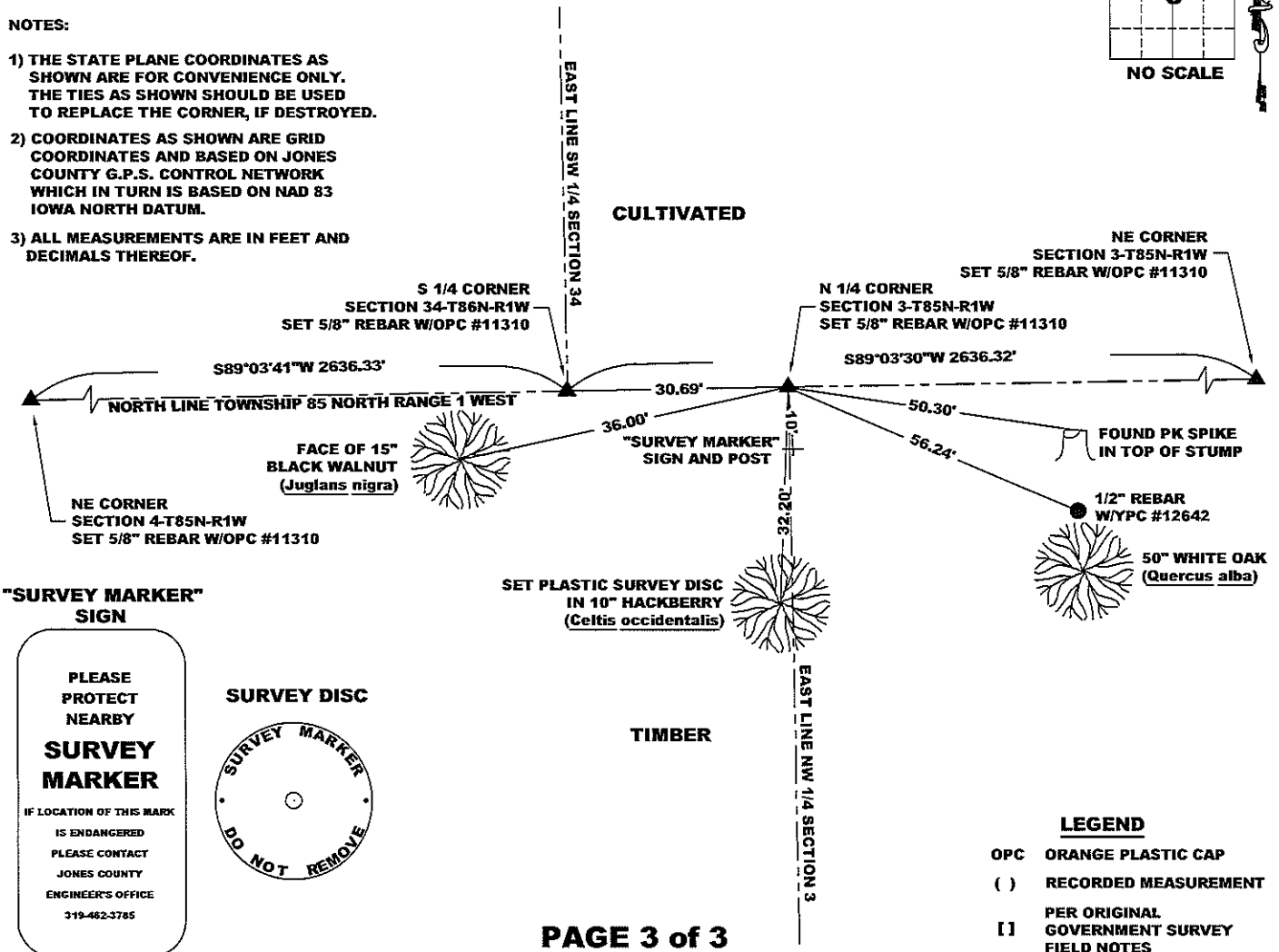
STATE PLANE COORDINATE  
 NAD 83 IOWA NORTH  
 N 3549275.50  
 E 5612894.40

CORNER SECTION TOWNSHIP RANGE  
 N 1/4 CORNER 3 T86N R1W

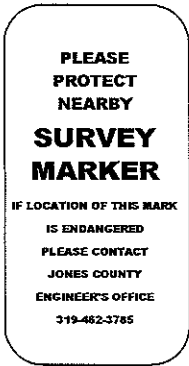


**NOTES:**

- 1) THE STATE PLANE COORDINATES AS SHOWN ARE FOR CONVENIENCE ONLY. THE TIES AS SHOWN SHOULD BE USED TO REPLACE THE CORNER, IF DESTROYED.
- 2) COORDINATES AS SHOWN ARE GRID COORDINATES AND BASED ON JONES COUNTY G.P.S. CONTROL NETWORK WHICH IN TURN IS BASED ON NAD 83 IOWA NORTH DATUM.
- 3) ALL MEASUREMENTS ARE IN FEET AND DECIMALS THEREOF.



**"SURVEY MARKER" SIGN**



**SURVEY DISC**



**TIMBER**

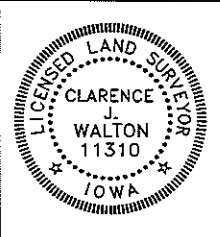
**LEGEND**

- OPC ORANGE PLASTIC CAP
- ( ) RECORDED MEASUREMENT
- PER ORIGINAL GOVERNMENT SURVEY FIELD NOTES

PAGE 3 of 3

PREVIOUSLY RECORDED INRECORDER'S DOCUMENT 2007 3740, JONES COUNTY RECORDER'S OFFICE.  
**MONUMENT DESCRIPTION AND HOW ESTABLISHED** SET 5/8" X 48" REBAR WITH ORANGE PLASTIC CAP (OPC) #11310 24" BELOW PRESENT GROUND LINE AND EQUIDISTANT BETWEEN A 5/8" X 24" REBAR WITH OPC #11310 AT THE NE CORNER OF SECTION 3-T85N-R1W AND A 5/8" REBAR WITH OPC #11310 AT THE NE CORNER OF SECTION 4-T85N-R1W. A FOUND 1/2" REBAR WITH A YELLOW PLASTIC CAP #12642 PER CORNER CERTIFICATE RECORDED IN RECORDER'S DOCUMENT 2007 3740 WAS NOT USED. FOUND CORNERS AT THE SE CORNER OF SECTION 34-T86N-R1W AND THE SE CORNER OF SECTION 33-T86N-R1W ALLOWED US TO SET THE NE CORNERS OF SAID SECTION 3 AND SECTION 4-T85N-R1W PER GOVERNMENT FIELD NOTES. AFTER RUNNING THE SOUTH LINE OF T86N-R1W FROM THE SE CORNER OF SECTION 36-T86N-R1W ON THE 5TH PRINCIPAL MERIDIAN TO THE SW CORNER OF T86N-R1W AND TYING IN EXISTING SECTION CORNER MONUMENTS, FENCE LINES, NATURAL FEATURES MENTIONED IN THE ORIGINAL GOVERNMENT SURVEY NOTES, AND OTHER EVIDENCES THAT WE THOUGHT WOULD BE OF VALUE, WE WERE ABLE TO RECONSTRUCT THE SOUTH LINE OF T86N-R1W. AT THIS POINT WE WERE ABLE TO FIND A FEW MORE SECTION CORNERS THAT WERE NOT APPARENT ON THE FIRST GO AROUND. WE NOW HAD A DECENT RUNNING AVERAGE OF BEARINGS OF THE SOUTH LINE OF T86N-R1W. I THEN FELT THE AFOREMENTIONED 1/2" REBAR WAS TOO FAR SOUTH BY APPROXIMATELY 25'. ALSO THE FENCE LINE RUNNING WEST SHOWN ON SAID RECORDED TIES WANDERS QUITE A BIT THROUGH THE TIMBER AND ENDS UP ABOUT 110' NORTH OF A FOUND 1" SQUARE IRON ROD AT THE SE CORNER OF SAID SECTION 33 (PLEASE REFER TO THE NARRATIVE OF THE CORNER CERTIFICATE FOR THE SE CORNER OF SAID SECTION 33). AT THE BEGINNING OF THIS PROJECT, WE TALKED WITH THE VARIOUS LAND OWNERS ON WHOSE FARMS WE WERE GOING TO TRAVERSE. WE WERE TOLD BY MANY OF THE OWNERS THAT THE FARMS IN THIS AREA HAD BEEN IN THE FAMILY FOR YEARS AND THEY FREELY ADMITTED THE FENCES DON'T NECESSARILY FOLLOW ANY LAND LINES WHATSOEVER AND THERE WAS NO ATTEMPTS WERE MADE TO DO SO; THERE WAS NO REASON TO SET FENCES ON ANY LAND LINE AS "IT WAS ALL IN THE FAMILY". AS A LAST ITEM, THE "50" TREE CORNER" [A 50" WHITE OAK (*Quercus alba*)] AS SHOWN ON SAID RECORDED TIES WOULD SURELY HAVE BEEN MENTIONED IN THE ORIGINAL SURVEY NOTES; IT WOULD HAVE BEEN A 10" - 12" TREE IN 1836 AND WOULD HAVE BEEN CALLED OUT AS A CORNER TREE, A LINE TREE, OR A BEARING TREE. IT SEEMS LIKELY THAT THE TREE WAS TOO FAR OFF LINE TO HAVE BEEN A LINE TREE, AND WAS NOT AND WAS NOT CALLED OUT AS EITHER A BEARING TREE OR A CORNER TREE IN THE ORIGINAL FIELD NOTES. I FEEL MORE COMFORTABLE WITH LOCATING THE N 1/4 CORNER OF SAID SECTION 3 WHERE I HAVE THAN AS LOCATED PER THE RECORDED TIES IN RECORDER'S DOCUMENT 2007 3740. IT MUST BE SAID AT THIS POINT THAT ABSOLUTELY NO CRITICISM IS GIVEN HERE. TO COME TO THE CONCLUSION THAT I DID INVOLVED WEEKS OF WORK INTERMITTENTLY OVER A PERIOD OF THREE YEARS, TO RETRACE THE FOOTSTEPS OF THE ORIGINAL SURVEYOR OF THE TOWNSHIP BOUNDARY (WILLIAM AUSTIN BURT) AS WE DID, THE COST WOULD HAVE BEEN ABSURDLY HIGH.

FIELD BOOK 344, PAGE 65. DATE OF SURVEY: 5/10/10



I hereby certify that this land surveying document and the related survey work was performed by me or under my direct personal supervision and that I am a duly registered Land Surveyor under the laws of the State of Iowa.  
 Signed: *Clarence J. Walton* 5/19/10  
 Clarence J. Walton, L.S.  
 My Registration Renewal Date is December 31, 2011  
 Iowa License Number 11310  
 Pages or sheets covered by this seal: 3 of 3.

- A. THERE IS NO CERTIFICATE FOR THE CORNER ON FILE WITH THE RECORDER OF THE COUNTY IN WHICH THE CORNER IS LOCATED.
- B. THE CORNER MONUMENT HAS BEEN REPLACED OR MODIFIED.
- C. THE SURVEYOR IN RESPONSIBLE CHARGE OF THE LAND SURVEYING ACCEPTS A CORNER POSITION THAT DIFFERS FROM THAT SHOWN IN THE PUBLIC RECORDS OF THE COUNTY IN WHICH THE CORNER IS LOCATED.
- D. THE REFERENCE TIES REFERRED TO IN AN EXISTING PUBLIC RECORD NO LONGER EXIST.
- E. EXISTING CORNER TIES UPDATED.

**CORNERS TO BE INDEXED**

CORNER	SECTION	TOWNSHIP	RANGE
N 1/4 CORNER	3	85N	1W

**JONES COUNTY ENGINEER'S OFFICE**



19501 HWY. 64, ANAMOSA, IOWA 52205  
 (319) 462-3785

COPY

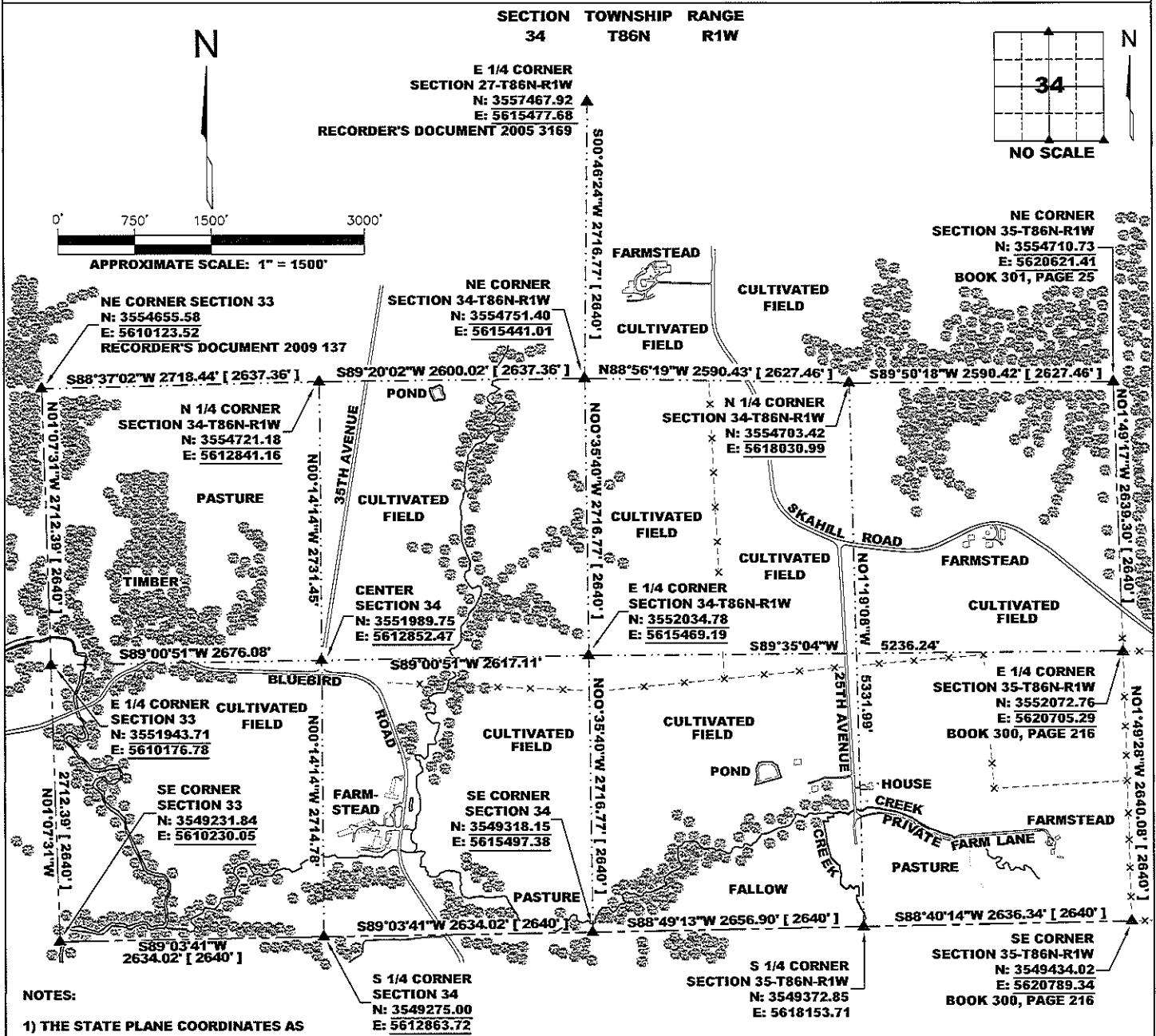
Jones County  
Marie Krutzfield, Recorder  
Fee Book 2010 1289

05/19/2010 @1242PM  
NSC SEC COR CERT  
Book: Page: # Pages: 4  
Total Fees: \$0.00

PREPARED BY

CLARENCE J. WALTON, JONES COUNTY ENGINEER'S OFFICE, 19501 HWY. 64, ANAMOSA, IOWA, 52205 (319) 462-3785

**COVER SHEET**  
**UNITED STATES PUBLIC LAND SURVEY CORNER CERTIFICATE**  
**LAND SURVEY MONUMENTS SITUATED IN SECTION 34, TOWNSHIP 86 NORTH,**  
**RANGE 1 WEST OF THE 5TH PRINCIPAL MERIDIAN, JONES COUNTY, IOWA.**


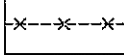
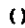



**NOTES:**

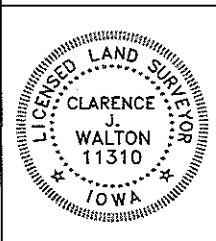
- 1) THE STATE PLANE COORDINATES AS SHOWN ARE FOR CONVENIENCE ONLY. THE TIES AS SHOWN SHOULD BE USED TO REPLACE THE CORNER, IF DESTROYED.
- 2) COORDINATES AS SHOWN ARE GRID COORDINATES AND BASED ON JONES COUNTY G.P.S. CONTROL NETWORK WHICH IN TURN IS BASED ON NAD 83 IOWA NORTH DATUM.
- 3) BASIS OF BEARINGS ARE BASED ON JONES COUNTY G.P.S. CONTROL NETWORK.
- 4) ALL MEASUREMENTS ARE IN FEET AND DECIMALS THEREOF. DISTANCES ON THIS COVER SHEET ARE GRID DISTANCES.

- 5) APPROXIMATE SCALE IS GIVEN IN ORDER TO FACILITATE NAVIGATION TO CORNERS IN CASE GPS IS NOT USED.
- 6) NOT ALL SECTION CORNERS SHOWN HERE HAVE BEEN SET AS OF YET. THEY WILL BE SET TENTATIVELY IN THE FALL OF 2010. PLEASE CHECK THE RECORDS OF THE JONES COUNTY, IOWA RECORDER FOR THOSE THAT DO HAVE SECTION CORNER CERTIFICATES ON FILE.

**LEGEND**

-  HARDWOOD TIMBER
-  FENCE LINE
-  ( ) RECORDED AS
-  [ ] PER ORIGINAL GOVERNMENT SURVEY FIELD NOTES

**PAGE 1 of 4**



I hereby certify that this land surveying document and the related survey work was performed by me or under my direct personal supervision and that I am a duly registered Land Surveyor under the laws of the State of Iowa.

Signed: *Clarence J. Walton* 5/3/10

Clarence J. Walton, L.S.  
My Registration Renewal Date is December 31, 2011  
Iowa License Number 11310  
Pages or sheets covered by this seal: 1 of 4.

**JONES COUNTY ENGINEER'S OFFICE**



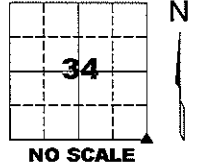
19501 HWY. 64, ANAMOSA, IOWA 52205  
(319) 462-3785

# UNITED STATES PUBLIC LAND SURVEY CORNER CERTIFICATE

LAND SURVEY MONUMENTS SITUATED IN SECTION 34, TOWNSHIP 86 NORTH,  
 RANGE 1 WEST OF THE 5TH PRINCIPAL MERIDIAN, JONES COUNTY, IOWA.

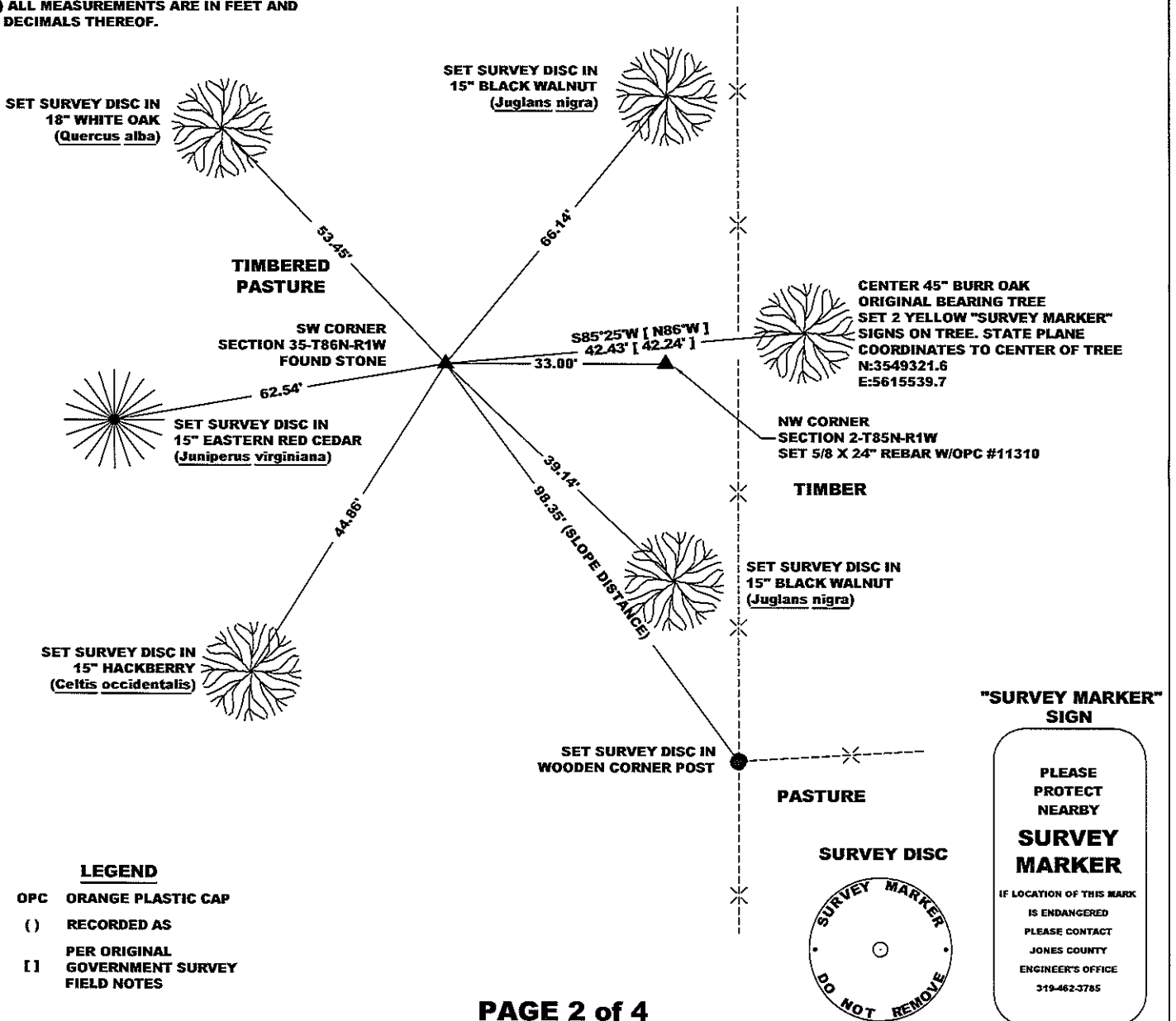
STATE PLANE COORDINATE  
 NAD 83 IOWA NORTH  
 N 3549318.15  
 E 5615497.38

CORNER SECTION TOWNSHIP RANGE  
 SE CORNER 34 T86N R1W



**NOTES:**

- 1) THE STATE PLANE COORDINATES AS SHOWN ARE FOR CONVENIENCE ONLY. THE TIES AS SHOWN SHOULD BE USED TO REPLACE THE CORNER, IF DESTROYED.
- 2) COORDINATES AS SHOWN ARE GRID COORDINATES AND BASED ON JONES COUNTY G.P.S. CONTROL NETWORK WHICH IN TURN IS BASED ON NAD 83 IOWA NORTH DATUM.
- 3) ALL MEASUREMENTS ARE IN FEET AND DECIMALS THEREOF.



**LEGEND**

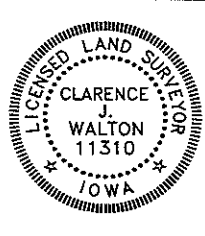
- OPC ORANGE PLASTIC CAP
- ( ) RECORDED AS
- PER ORIGINAL GOVERNMENT SURVEY FIELD NOTES
- [ ]

PAGE 2 of 4

PREVIOUSLY RECORDED IN N/A

MONUMENT DESCRIPTION AND HOW ESTABLISHED FOUND 12" X 16" 12" LIMESTONE FLUSH WITH PRESENT GROUND. SET 5/8" X 24" REBAR WITH ORANGE PLASTIC CAP #11310 ON NORTH SIDE OF STONE FOR DETECTION PURPOSES. SET STEEL FENCE POST WITH YELLOW "SURVEY MARKER" SIGN ON THE SOUTH SIDE OF STONE AS A WITNESS TO THIS CORNER. FOUND STONE BY USING BEARING TREE TO EAST. BEARING AND DISTANCE FROM CENTER OF TREE TO CENTER OF STONE CLOSELY MATCH THOSE IN THE ORIGINAL GOVERNMENT FIELD NOTES. SEE PAGES 6, 7, & 8 OF 10 FOR FURTHER NOTES.

FIELD BOOK 344, PAGE 70. DATE OF SURVEY: 11/4/09



I hereby certify that this land surveying document and the related survey work was performed by me or under my direct personal supervision and that I am a duly registered Land Surveyor under the laws of the State of Iowa.  
 Signed: *Clarence J. Walton* 5/3/10  
 Clarence J. Walton, L.S.  
 My Registration Renewal Date is December 31, 2011  
 Iowa License Number 11310  
 Pages or sheets covered by this seal: 2 of 4.

- A. THERE IS NO CERTIFICATE FOR THE CORNER ON FILE WITH THE RECORDER OF THE COUNTY IN WHICH THE CORNER IS LOCATED.
- B. THE CORNER MONUMENT HAS BEEN REPLACED OR MODIFIED.
- C. THE SURVEYOR IN RESPONSIBLE CHARGE OF THE LAND SURVEYING ACCEPTS A CORNER POSITION THAT DIFFERS FROM THAT SHOWN IN IN THE PUBLIC RECORDS OF THE COUNTY IN WHICH THE CORNER IS LOCATED.
- D. THE REFERENCE TIES REFERRED TO IN AN EXISTING PUBLIC RECORD NO LONGER EXIST.
- E. EXISTING CORNER TIES UPDATED.

**CORNERS TO BE INDEXED**

CORNER	SECTION	TOWNSHIP	RANGE
SE CORNER	34	86N	1W
SW CORNER	35	86N	1W

**JONES COUNTY ENGINEER'S OFFICE**



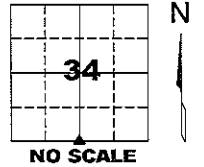
19501 HWY. 64, ANAMOSA, IOWA 52205  
 (319) 462-3785

# UNITED STATES PUBLIC LAND SURVEY CORNER CERTIFICATE

LAND SURVEY MONUMENTS SITUATED IN SECTION 34, TOWNSHIP 86 NORTH,  
 RANGE 1 WEST OF THE 5TH PRINCIPAL MERIDIAN, JONES COUNTY, IOWA.

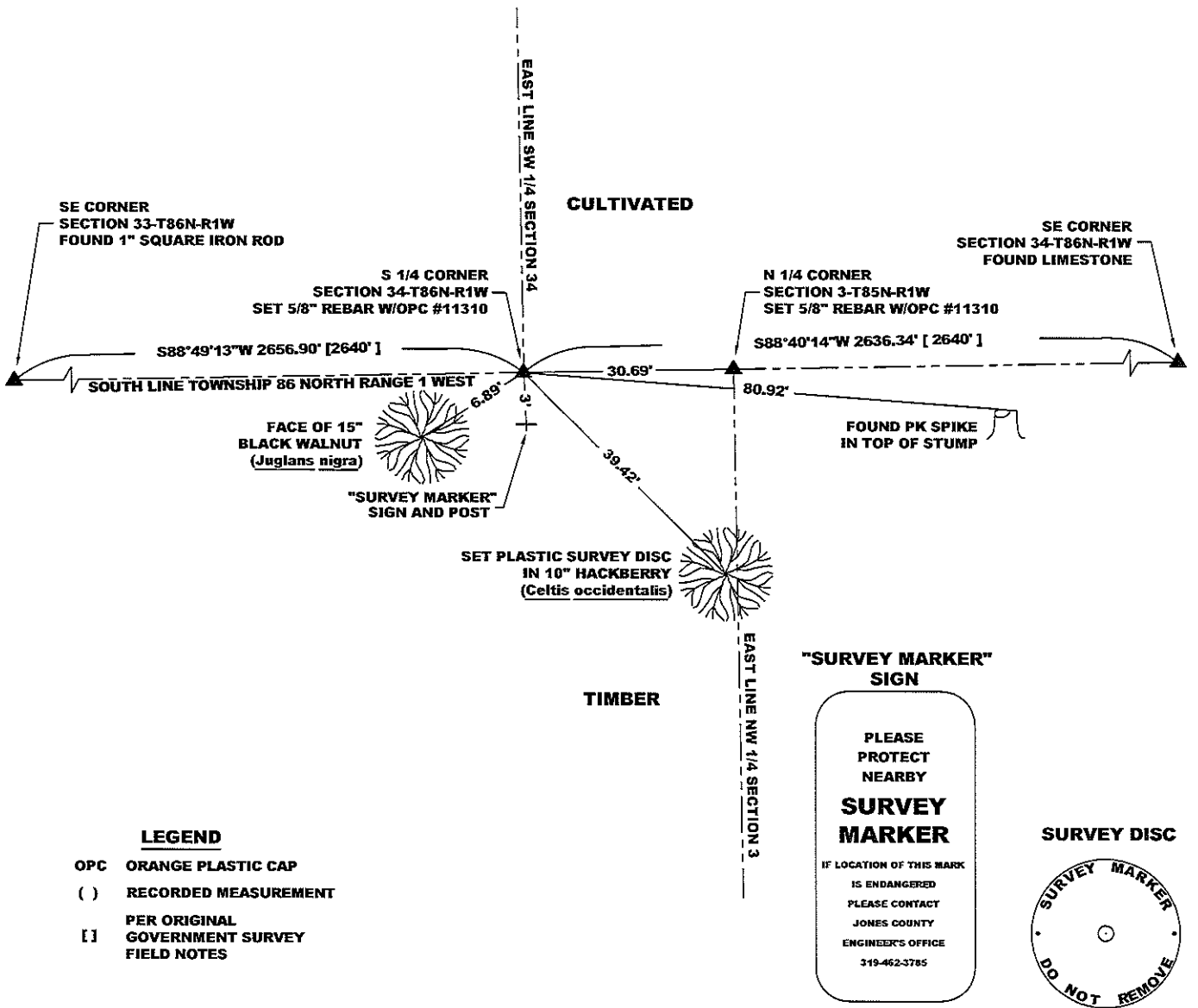
STATE PLANE COORDINATE  
 NAD 83 IOWA NORTH  
 N 3549275.00  
 E 5612863.72

CORNER SECTION TOWNSHIP RANGE  
 S 1/4 CORNER 34 T86N R1W



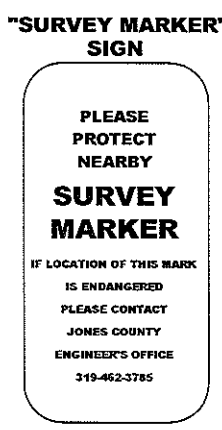
**NOTES:**

- 1) THE STATE PLANE COORDINATES AS SHOWN ARE FOR CONVENIENCE ONLY. THE TIES AS SHOWN SHOULD BE USED TO REPLACE THE CORNER, IF DESTROYED.
- 2) COORDINATES AS SHOWN ARE GRID COORDINATES AND BASED ON JONES COUNTY G.P.S. CONTROL NETWORK WHICH IN TURN IS BASED ON NAD 83 IOWA NORTH DATUM.
- 3) ALL MEASUREMENTS ARE IN FEET AND DECIMALS THEREOF.



**LEGEND**

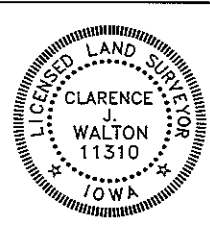
- OPC ORANGE PLASTIC CAP
- ( ) RECORDED MEASUREMENT
- PER ORIGINAL GOVERNMENT SURVEY FIELD NOTES



**PAGE 3 of 4**

PREVIOUSLY RECORDED IN N/A  
 MONUMENT DESCRIPTION AND HOW ESTABLISHED SET 5/8\"

FIELD BOOK 344, PAGE 65. DATE OF SURVEY: 5/10/10



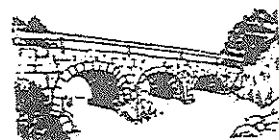
I hereby certify that this land surveying document and the related survey work was performed by me or under my direct personal supervision and that I am a duly registered Land Surveyor under the laws of the State of Iowa.  
 Signed: *Clarence J. Walton* 5/3/10  
 Clarence J. Walton, L.S.  
 My Registration Renewal Date is December 31, 2011  
 Iowa License Number 11310  
 Pages or sheets covered by this seal: 3 of 4.

- A. THERE IS NO CERTIFICATE FOR THE CORNER ON FILE WITH THE RECORDER OF THE COUNTY IN WHICH THE CORNER IS LOCATED.
- B. THE CORNER MONUMENT HAS BEEN REPLACED OR MODIFIED.
- C. THE SURVEYOR IN RESPONSIBLE CHARGE OF THE LAND SURVEYING ACCEPTS A CORNER POSITION THAT DIFFERS FROM THAT SHOWN IN THE PUBLIC RECORDS OF THE COUNTY IN WHICH THE CORNER IS LOCATED.
- D. THE REFERENCE TIES REFERRED TO IN AN EXISTING PUBLIC RECORD NO LONGER EXIST.
- E. EXISTING CORNER TIES UPDATED.

**CORNERS TO BE INDEXED**

CORNER	SECTION	TOWNSHIP	RANGE
S 1/4 CORNER	34	86N	1W

**JONES COUNTY ENGINEER'S OFFICE**



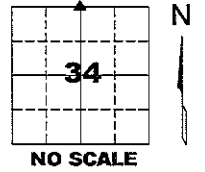
19501 HWY. 64, ANAMOSA, IOWA 52205  
 (319) 462-3785

# UNITED STATES PUBLIC LAND SURVEY CORNER CERTIFICATE

**LAND SURVEY MONUMENTS SITUATED IN SECTION 34, TOWNSHIP 86 NORTH,  
 RANGE 1 WEST OF THE 5TH PRINCIPAL MERIDIAN, JONES COUNTY, IOWA.**

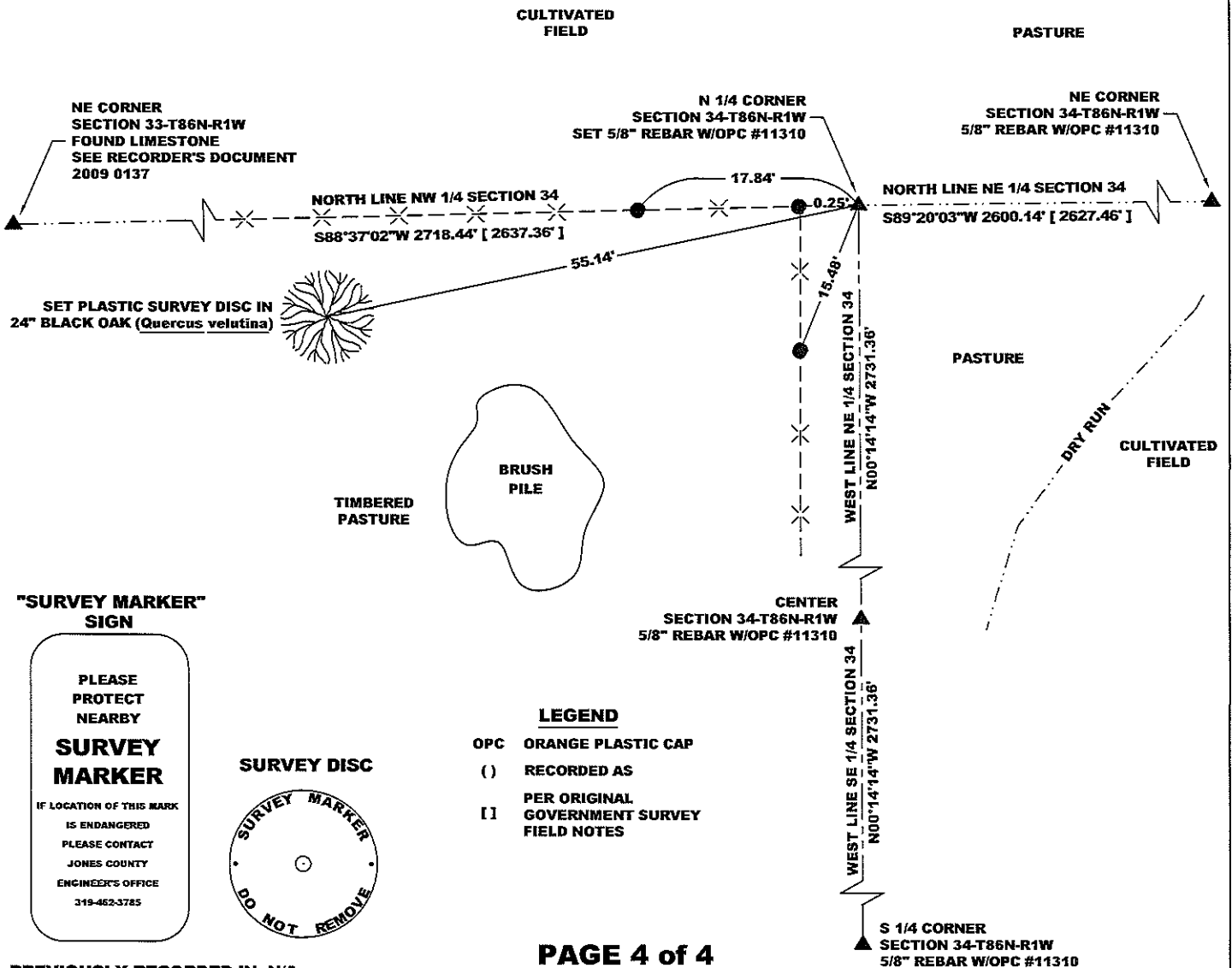
STATE PLANE COORDINATE  
 NAD 83 IOWA NORTH  
 N 3554721.18  
 E 5612841.16

CORNER SECTION TOWNSHIP RANGE  
 N 1/4 CORNER 34 T86N R1W



**NOTES:**

- 1) THE STATE PLANE COORDINATES AS SHOWN ARE FOR CONVENIENCE ONLY. THE TIES AS SHOWN SHOULD BE USED TO REPLACE THE CORNER, IF DESTROYED.
- 2) COORDINATES AS SHOWN ARE GRID COORDINATES AND BASED ON JONES COUNTY G.P.S. CONTROL NETWORK WHICH IN TURN IS BASED ON NAD 83 IOWA NORTH DATUM.
- 3) ALL MEASUREMENTS ARE IN FEET AND DECIMALS THEREOF.



**"SURVEY MARKER" SIGN**



**SURVEY DISC**



**LEGEND**

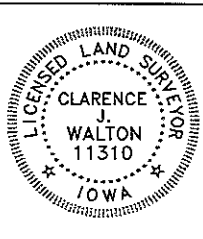
- OPC ORANGE PLASTIC CAP
- ( ) RECORDED AS
- [ ] PER ORIGINAL GOVERNMENT SURVEY FIELD NOTES

**PAGE 4 of 4**

PREVIOUSLY RECORDED IN N/A

**MONUMENT DESCRIPTION AND HOW ESTABLISHED** SET 5/8" REBAR W/ ORANGE PLASTIC CAP #11310 1" ABOVE SURFACE ON EAST SIDE OF FENCE CORNER POST. 1940 AERIAL PHOTO SHOWS FENCE CORNER IN SAME LOCATION WITH FENCE LINES TO WEST AND TO NORTH AND SOUTH. TREES IN FENCE LINES ARE LARGE INDICATING FENCE HAD BEEN IN PLACE FOR SOME TIME TALKING WITH LAND OWNER, WE FOUND THAT THE FENCE HAD BEEN IN SAME PLACE BEFORE HE PURCHASED THE LAND AND THAT THE FENCE WAS A PROPERTY DIVISION FENCE AT THAT TIME. AREA IS STREWN WITH NUMEROUS STONES BUT NONE OF A PROPER SIZE WERE FOUND NEAR CORNER POST.

FIELD BOOK 344, PAGE 73. DATE OF SURVEY: 11/23/09



I hereby certify that this land surveying document and the related survey work was performed by me or under my direct personal supervision and that I am a duly registered Land Surveyor under the laws of the State of Iowa.  
 Signed: *Clarence J. Walton* 5/3/10  
 Clarence J. Walton, L.S.  
 My Registration Renewal Date is December 31, 2011  
 Iowa License Number 11310  
 Pages or sheets covered by this seal: 4 of 4.

- A. THERE IS NO CERTIFICATE FOR THE CORNER ON FILE WITH THE RECORDER OF THE COUNTY IN WHICH THE CORNER IS LOCATED.
- B. THE CORNER MONUMENT HAS BEEN REPLACED OR MODIFIED.
- C. THE SURVEYOR IN RESPONSIBLE CHARGE OF THE LAND SURVEYING ACCEPTS A CORNER POSITION THAT DIFFERS FROM THAT SHOWN IN THE PUBLIC RECORDS OF THE COUNTY IN WHICH THE CORNER IS LOCATED.
- D. THE REFERENCE TIES REFERRED TO IN AN EXISTING PUBLIC RECORD NO LONGER EXIST.
- E. EXISTING CORNER TIES UPDATED.

**CORNERS TO BE INDEXED**

CORNER	SECTION	TOWNSHIP	RANGE
N 1/4 CORNER	34	86N	1W
S 1/4 CORNER	27	86N	1W

**JONES COUNTY ENGINEER'S OFFICE**



19501 HWY. 64, ANAMOSA, IOWA 52205  
 (319) 462-3785

Marie Krutzfield, Recorder  
Jones County, Iowa

Prepared by Wm. Burger Land Surveyor 510 3rd Street West Court, Worthington, Iowa Phone 563 - 855 2028

**UNITED STATES PUBLIC LAND SURVEY CORNER CERTIFICATE**

Land Survey Monuments situated in Section 3, Township 85N, Range 1W, of the Fifth Principal Meridian, Jones County, Iowa. Previously recorded in N/A in the Office of the County Recorder

Monument Description and Remarks: (No Corner Certificates found at the County Recorders Office)

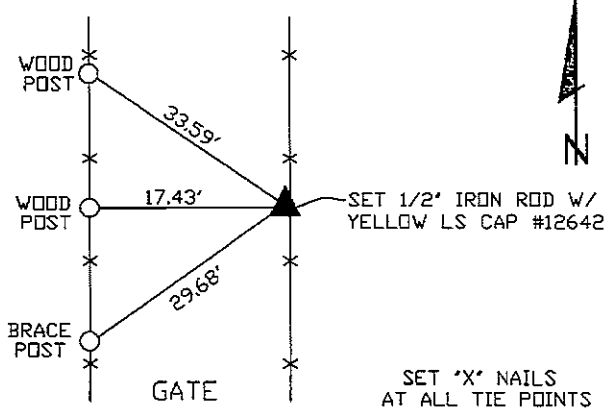
CENTER OF SECTION - SET 1/2" IRON ROD W/ YELLOW LS CAP #12642 - RUN STRAIGHT LINES FROM OPPOSITE 1/4 CORNERS TO THE WEST AND EAST AND USED EXISTING FENCELINE EVIDENCE TO THE SOUTH AND SET AT POINT OF INTERSECTION

N1/4 CORNER - SET 1/2" IRON ROD W/ YELLOW LS CAP #12642 - USED EXISTING FENCELINE EVIDENCE AND SET AT TREE CORNER

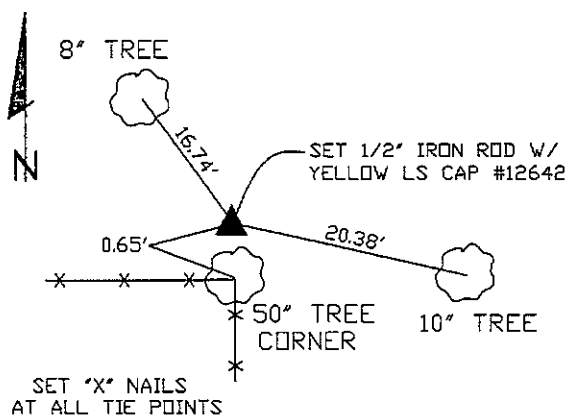
NW CORNER SW1/4 NE1/4 - SET 1/2" IRON ROD W/ YELLOW LS CAP #12642 - SET ON LINE AND MIDWAY BETWEEN THE N1/4 CORNER AND THE CENTER OF SECTION

**PLAN VIEW**

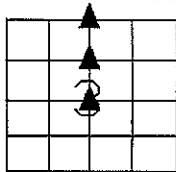
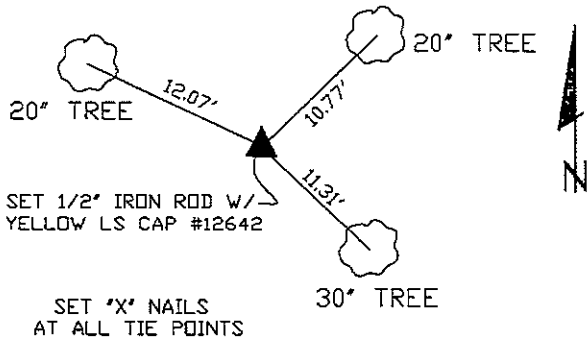
CENTER OF SECTION



N1/4 CORNER



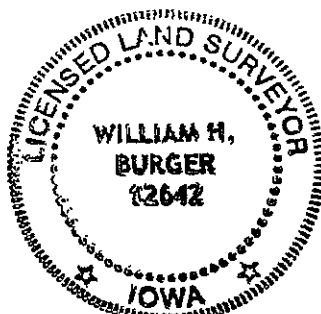
NW CORNER SW1/4 NE1/4



SEC. 3 TWP. 85N RANGE 1W

CORNERS TO BE INDEXED

CENTER OF SECTION	3	85N	1W
N1/4 CORNER	3	85N	1W
NW CORNER SW1/4 NE1/4	3	85N	1W



I hereby certify that this land surveying document was prepared and related survey work was performed by me or under my direct personal supervision and that I am a duly licensed Land Surveyor under the laws of the State of Iowa.

*William H. Burger* 4/15/07  
William H. Burger Date

License number 12642

My license renewal date is December 31, 2008

Pages or Sheets covered by this seal: Sheet 1 of 1