

1999 0743

FILED  
RECORDERS OFFICE  
JONES COUNTY IOWA

99 FEB 26 PM 3:51

MARIE KRUTZFIELD  
RECORDER 6.00 pd.

Prepared by Wm. Burger Land Surveyors 510 3rd Street Nest Court, Worthington, Iowa Phone 319 - 855 2028

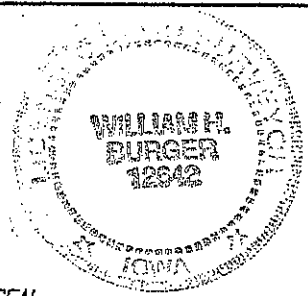
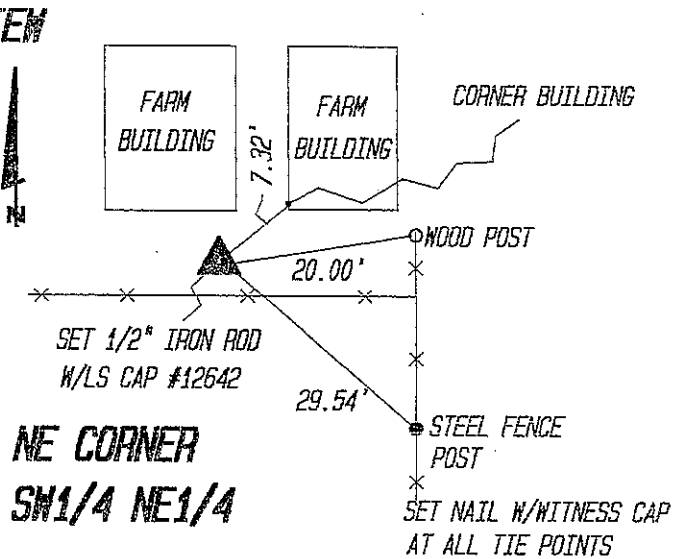
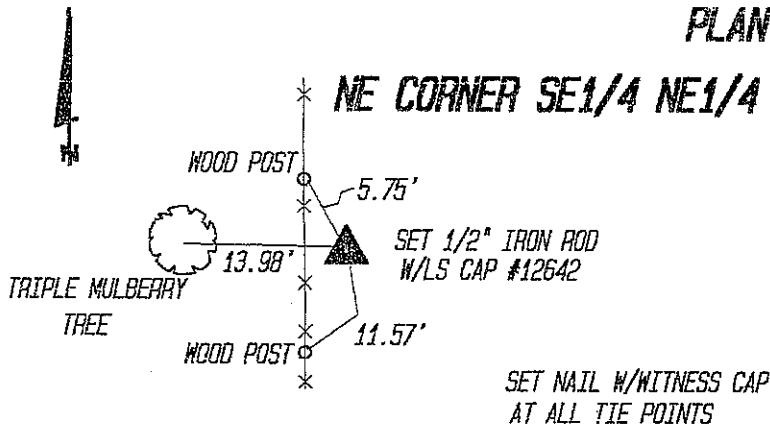
### UNITED STATES PUBLIC LAND SURVEY CORNER CERTIFICATE

Land Survey Monuments situated in Section 3, Township 85N, Range 1W, of the Fifth Principal Meridian, Jones County, Iowa. Previously recorded in N/A in County Recorder's Office.

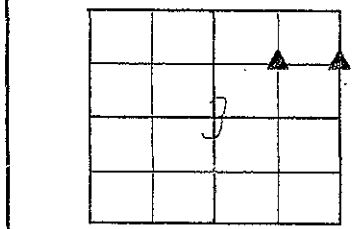
Monument Description and Remarks: (No Corner Certificates found at the County Recorders Office)

NE CORNER SW1/4 NE1/4 - SET 1/2" IRON ROD W/YELLOW CAP #12642 RUN STRAIGHT LINES FROM OPPOSITE 1/4 CORNERS OF THE NE 1/4 SAID SECTION 3

NE CORNER SE1/4 NE1/4 - SET 1/2" IRON ROD W/YELLOW CAP #12642 ONLINE AND MIDWAY BETWEEN E1/4 CORNER AND THE NE CORNER OF SAID SECTION 3



SEAL



SEC. 3 TWP. 85N RANGE 1W

I hereby certify that this land surveying document was prepared and related survey work was performed by me or under my direct personal supervision and that I am a duly licensed Land Surveyor under the laws of the State of Iowa.

William H. Burger 2/25/99  
William H. Burger Date

License number 12642

My license renewal date is December 31, 2000

Pages or Sheets covered by this seal: Sheet 1 of 1

CORNERS TO BE INDEXED

Corner

NE CORNER SE1/4 NE1/4	Section <u>3</u>	Twp <u>85N</u>	Range <u>1W</u>
NE CORNER SW1/4 NE1/4	Section <u>3</u>	Twp <u>85N</u>	Range <u>1W</u>
_____	Section _____	Twp _____	Range _____
_____	Section _____	Twp _____	Range _____