

COPY

Jones County  
 Marie Krutzfield, Recorder  
**Fee Book 2010 1280**  
 05/19/2010 @0956AM  
 ZSC SEC COR CERT  
 Book: Page: # Pages: 5  
 Total Fees: \$0.00

PREPARED BY

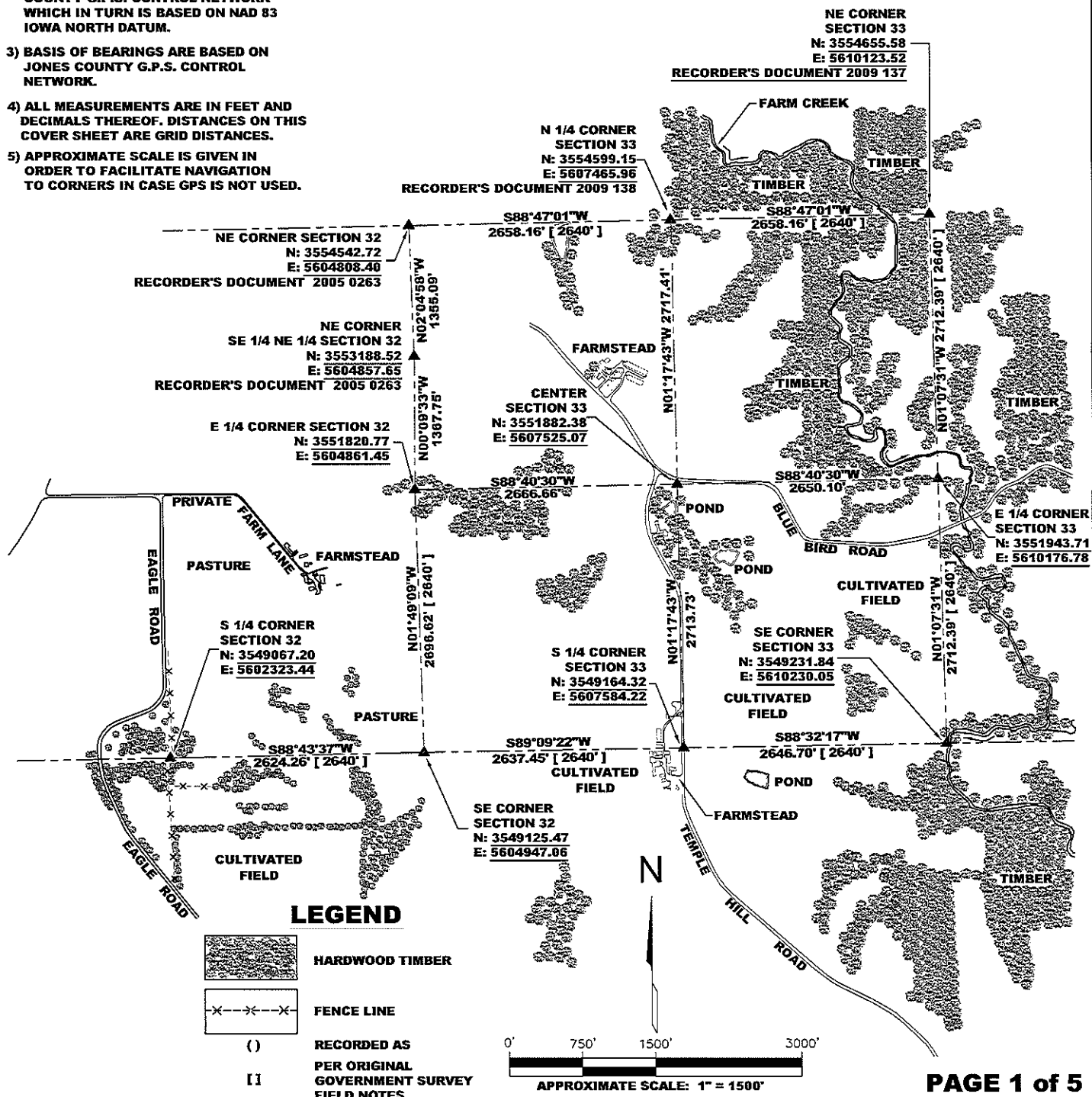
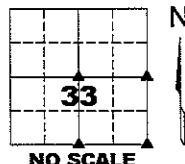
CLARENCE J. WALTON, JONES COUNTY ENGINEER'S OFFICE, 19501 HWY. 64, ANAMOSA, IOWA, 52205 (319) 462-3785

**COVER SHEET**  
**UNITED STATES PUBLIC LAND SURVEY CORNER CERTIFICATE**  
**LAND SURVEY MONUMENTS SITUATED IN SECTION 33, TOWNSHIP 86 NORTH,**  
**RANGE 1 WEST OF THE 5TH PRINCIPAL MERIDIAN, JONES COUNTY, IOWA.**

NOTES:

- 1) THE STATE PLANE COORDINATES AS SHOWN ARE FOR CONVENIENCE ONLY. THE TIES AS SHOWN SHOULD BE USED TO REPLACE THE CORNER, IF DESTROYED.
- 2) COORDINATES AS SHOWN ARE GRID COORDINATES AND BASED ON JONES COUNTY G.P.S. CONTROL NETWORK WHICH IN TURN IS BASED ON NAD 83 IOWA NORTH DATUM.
- 3) BASIS OF BEARINGS ARE BASED ON JONES COUNTY G.P.S. CONTROL NETWORK.
- 4) ALL MEASUREMENTS ARE IN FEET AND DECIMALS THEREOF. DISTANCES ON THIS COVER SHEET ARE GRID DISTANCES.
- 5) APPROXIMATE SCALE IS GIVEN IN ORDER TO FACILITATE NAVIGATION TO CORNERS IN CASE GPS IS NOT USED.

SECTION 33 TOWNSHIP T86N RANGE R1W



I hereby certify that this land surveying document and the related survey work was performed by me or under my direct personal supervision and that I am a duly registered Land Surveyor under the laws of the State of Iowa.  
 Signed: *Clarence J. Walton* 5/19/10  
 Clarence J. Walton, L.S.  
 My Registration Renewal Date is December 31, 2011  
 Iowa License Number 11310  
 Pages or sheets covered by this seal: 1 of 5.

**JONES COUNTY ENGINEER'S OFFICE**

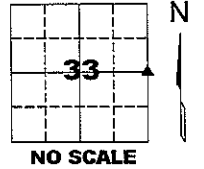
19501 HWY. 64, ANAMOSA, IOWA 52205  
 (319) 462-3785

# UNITED STATES PUBLIC LAND SURVEY CORNER CERTIFICATE

LAND SURVEY MONUMENTS SITUATED IN SECTION 33, TOWNSHIP 86 NORTH,  
 RANGE 1 WEST OF THE 5TH PRINCIPAL MERIDIAN, JONES COUNTY, IOWA.

STATE PLANE COORDINATE  
 NAD 83 IOWA NORTH  
 N 3551943.71  
 E 5610176.78

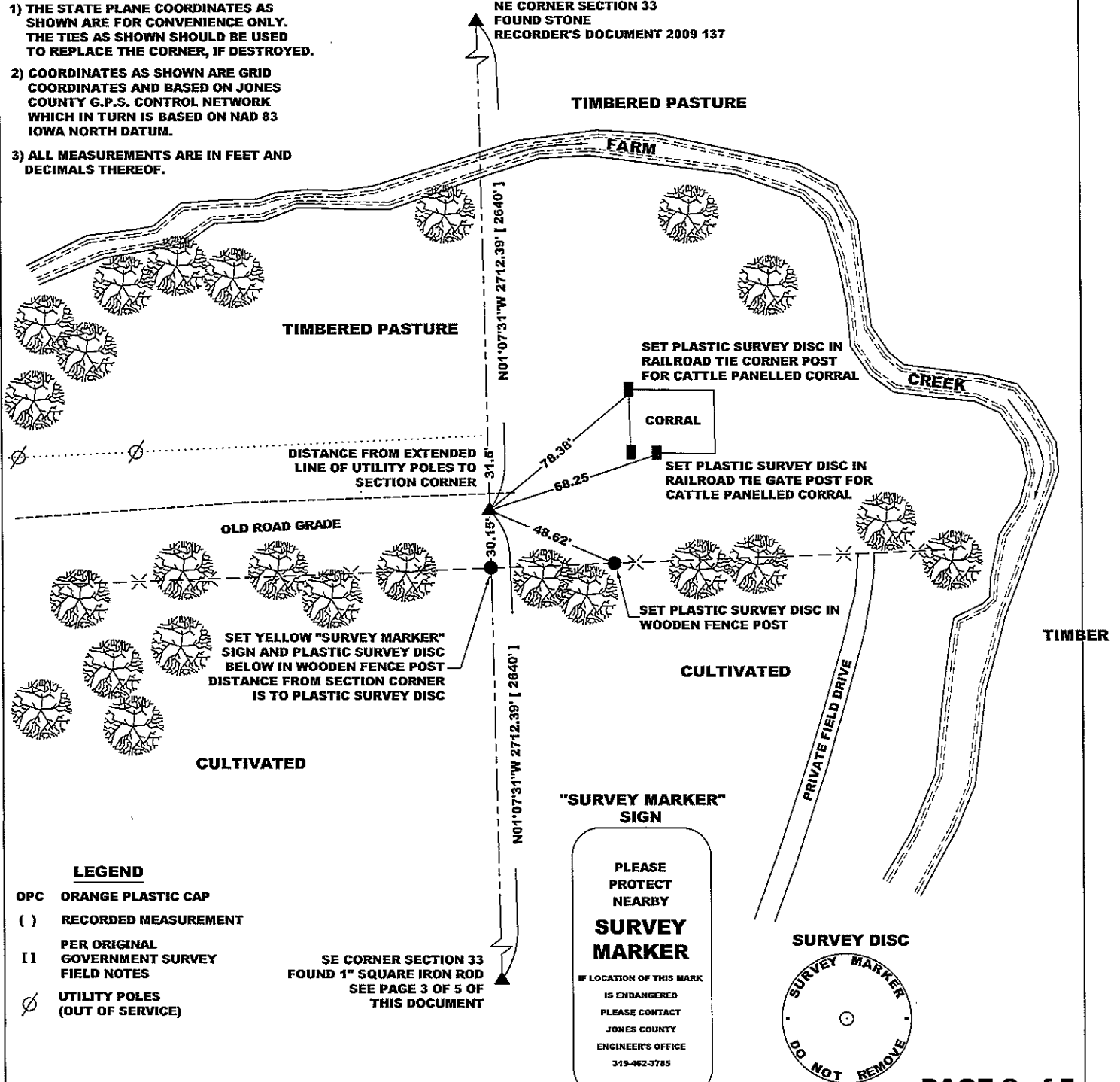
CORNER SECTION TOWNSHIP RANGE  
 E 1/4 CORNER 33 T86N R1W



**NOTES:**

- 1) THE STATE PLANE COORDINATES AS SHOWN ARE FOR CONVENIENCE ONLY. THE TIES AS SHOWN SHOULD BE USED TO REPLACE THE CORNER, IF DESTROYED.
- 2) COORDINATES AS SHOWN ARE GRID COORDINATES AND BASED ON JONES COUNTY G.P.S. CONTROL NETWORK WHICH IN TURN IS BASED ON NAD 83 IOWA NORTH DATUM.
- 3) ALL MEASUREMENTS ARE IN FEET AND DECIMALS THEREOF.

NE CORNER SECTION 33  
 FOUND STONE  
 RECORDER'S DOCUMENT 2009 137



**LEGEND**

- OPC ORANGE PLASTIC CAP
- ( ) RECORDED MEASUREMENT
- [ ] PER ORIGINAL GOVERNMENT SURVEY FIELD NOTES
- ∅ UTILITY POLES (OUT OF SERVICE)

SE CORNER SECTION 33  
 FOUND 1" SQUARE IRON ROD  
 SEE PAGE 3 OF 5 OF  
 THIS DOCUMENT

"SURVEY MARKER"  
 SIGN

PLEASE PROTECT NEARBY  
**SURVEY MARKER**  
 IF LOCATION OF THIS MARK IS ENDANGERED PLEASE CONTACT JONES COUNTY ENGINEER'S OFFICE  
 319-462-3785

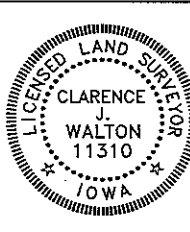


PREVIOUSLY RECORDED IN N/A

MONUMENT DESCRIPTION AND HOW ESTABLISHED SET 5/8" X 24" REBAR WITH ORANGE PLASTIC CAP #11310 FLUSH WITH EXISTING GROUND SURFACE, ON LINE AND EQUIDISTANT BETWEEN THE SE CORNER OF SECTION 33-T86N-R1W AND THE NE CORNER OF SAID SECTION 33. SET YELLOW "SURVEY MARKER" SIGN AS A WITNESS TO THIS CORNER IN WOODEN FENCE POST 30 FEET TO SOUTH OF CORNER (SEE DRAWING ABOVE). FOUND NO EVIDENCE INDICATING WHERE SECTION CORNER WAS ORIGINALLY SET. ROAD RECORDS DO NOT CORRESPOND WITH EXISTING OLD ROAD GRADE.

FIELD BOOK 344, PAGE 64. DATE OF SURVEY: 5/10/10

**PAGE 2 of 5**



I hereby certify that this land surveying document and the related survey work was performed by me or under my direct personal supervision and that I am a duly registered Land Surveyor under the laws of the State of Iowa.  
 Signed: *Clarence J. Walton* 5/19/10  
 Clarence J. Walton, L.S.  
 My Registration Renewal Date is December 31, 2011  
 Iowa License Number 11310  
 Pages or sheets covered by this seal: 2 of 5.

- A. THERE IS NO CERTIFICATE FOR THE CORNER ON FILE WITH THE RECORDER OF THE COUNTY IN WHICH THE CORNER IS LOCATED.
- B. THE CORNER MONUMENT HAS BEEN REPLACED OR MODIFIED.
- C. THE SURVEYOR IN RESPONSIBLE CHARGE OF THE LAND SURVEYING ACCEPTS A CORNER POSITION THAT DIFFERS FROM THAT SHOWN IN THE PUBLIC RECORDS OF THE COUNTY IN WHICH THE CORNER IS LOCATED.
- D. THE REFERENCE TIES REFERRED TO IN AN EXISTING PUBLIC RECORD NO LONGER EXIST.
- E. EXISTING CORNER TIES UPDATED.

**CORNERS TO BE INDEXED**

CORNER	SECTION	TOWNSHIP	RANGE
E 1/4 CORNER	33	86N	1W
W 1/4 CORNER	34	86N	1W

**JONES COUNTY ENGINEER'S OFFICE**



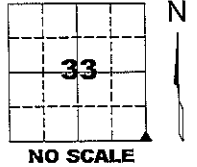
19501 HWY. 64, ANAMOSA, IOWA 52205  
 (319) 462-3785

# UNITED STATES PUBLIC LAND SURVEY CORNER CERTIFICATE

LAND SURVEY MONUMENTS SITUATED IN SECTION 33, TOWNSHIP 86 NORTH,  
 RANGE 1 WEST OF THE 5TH PRINCIPAL MERIDIAN, JONES COUNTY, IOWA.

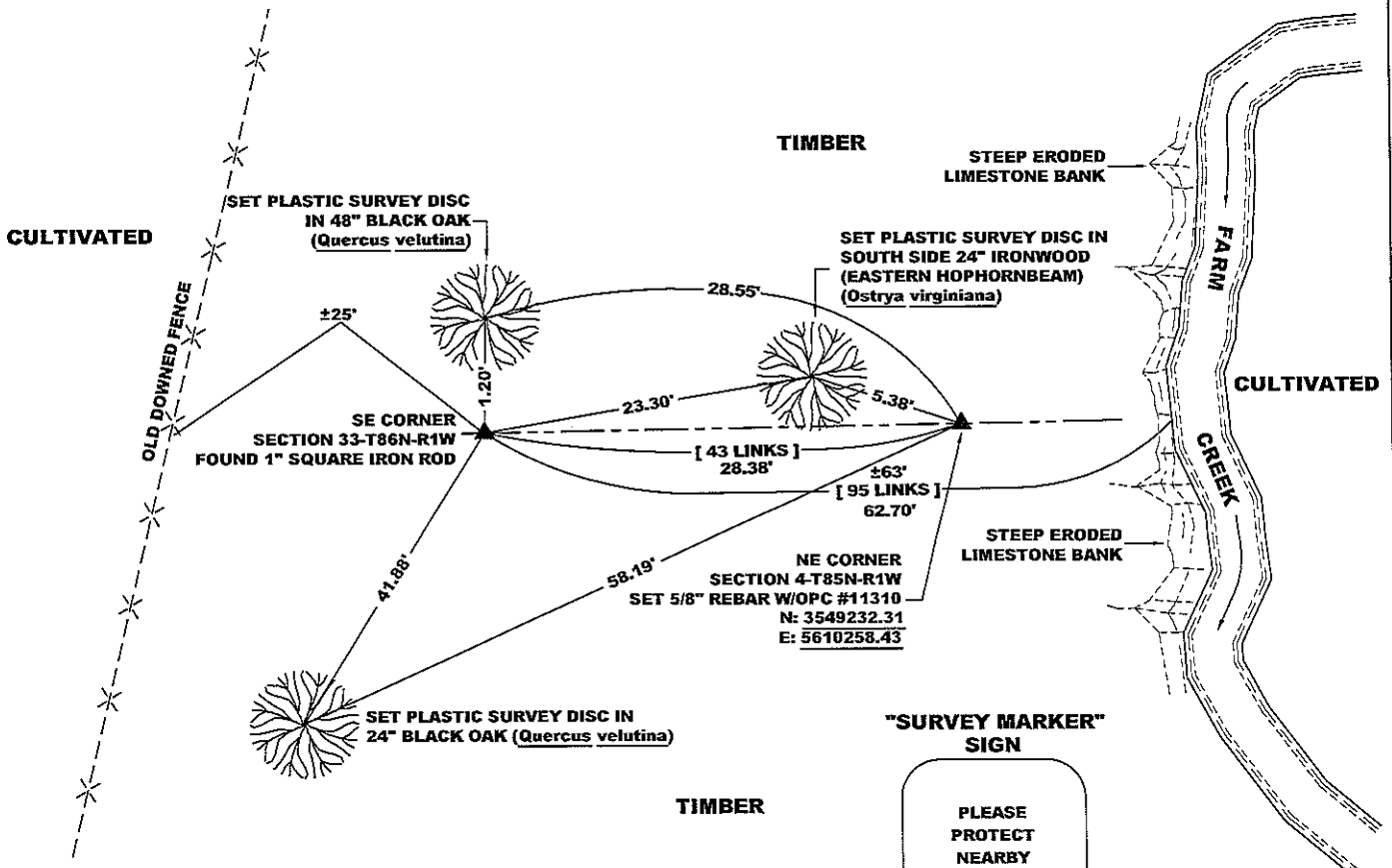
STATE PLANE COORDINATE  
 NAD 83 IOWA NORTH  
 N 3549231.84  
 E 5610230.05

CORNER SECTION TOWNSHIP RANGE  
 SE CORNER 33 T86N R1W



**NOTES:**

- 1) THE STATE PLANE COORDINATES AS SHOWN ARE FOR CONVENIENCE ONLY. THE TIES AS SHOWN SHOULD BE USED TO REPLACE THE CORNER, IF DESTROYED.
- 2) COORDINATES AS SHOWN ARE GRID COORDINATES AND BASED ON JONES COUNTY G.P.S. CONTROL NETWORK WHICH IN TURN IS BASED ON NAD 83 IOWA NORTH DATUM.
- 3) ALL MEASUREMENTS ARE IN FEET AND DECIMALS THEREOF.



**LEGEND**

- OPC ORANGE PLASTIC CAP
- ( ) RECORDED MEASUREMENT
- PER ORIGINAL
- [ ] GOVERNMENT SURVEY FIELD NOTES

**"SURVEY MARKER" SIGN**

PLEASE PROTECT NEARBY

**SURVEY MARKER**

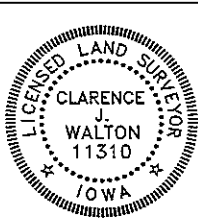
IF LOCATION OF THIS MARK IS ENDANGERED PLEASE CONTACT JONES COUNTY ENGINEER'S OFFICE 319-462-3785



PAGE 3 of 5

PREVIOUSLY RECORDED IN N/A  
 MONUMENT DESCRIPTION AND HOW ESTABLISHED FOUND 1" SQUARE IRON ROD AT SOUTH BASE OF 48" BLACK OAK APPROXIMATELY 4" BELOW PRESENT SURFACE. SET STEEL FENCE POST WITH JONES COUNTY "SURVEY MARKER" SIGN APPROXIMATELY 6" SOUTH OF IRON ROD AS A WITNESS POST. DISTANCE FROM IRON ROD TO EDGE OF WATER AT WEST SIDE OF FARM CREEK CLOSELY MATCHES DISTANCE PER ORIGINAL GOVERNMENT SURVEY FIELD NOTES. GOVERNMENT FIELD NOTES (IN 1836) CALL FOR AN 18" BLACK OAK S4°W, 10 LINKS (6.6 FEET) FROM CORNER. THE 48" BLACK OAK AS SHOWN ON THE TIES IS TOO SMALL TO HAVE BEEN THE ORIGINAL BEARING TREE. THE ORIGINAL BEARING TREE WOULD NOW HAVE TO BE APPROXIMATELY 60" IN DIAMETER ASSUMING A GROWTH RATE THAT WOULD ALLOW FOR AN INCREASE OF DIAMETER 0.25" PER YEAR. THIS GROWTH RATE IS WHAT I HAVE FOUND ON OTHER BEARING TREES I'VE FOUND IN THIS COUNTY AND ALSO FROM VARIOUS PUBLISHED SOURCES.

FIELD BOOK 344, PAGE 73. DATE OF SURVEY: 11/23/09



I hereby certify that this land surveying document and the related survey work was performed by me or under my direct personal supervision and that I am a duly registered Land Surveyor under the laws of the State of Iowa.  
 Signed: *Clarence J. Walton* 5/19/10  
 Clarence J. Walton, L.S.  
 My Registration Renewal Date is December 31, 2011  
 Iowa License Number 11310  
 Pages or sheets covered by this seal: 3 of 5.

- A. THERE IS NO CERTIFICATE FOR THE CORNER ON FILE WITH THE RECORDER OF THE COUNTY IN WHICH THE CORNER IS LOCATED.
- B. THE CORNER MONUMENT HAS BEEN REPLACED OR MODIFIED.
- C. THE SURVEYOR IN RESPONSIBLE CHARGE OF THE LAND SURVEYING ACCEPTS A CORNER POSITION THAT DIFFERS FROM THAT SHOWN IN THE PUBLIC RECORDS OF THE COUNTY IN WHICH THE CORNER IS LOCATED.
- D. THE REFERENCE TIES REFERRED TO IN AN EXISTING PUBLIC RECORD NO LONGER EXIST.
- E. EXISTING CORNER TIES UPDATED.

**CORNERS TO BE INDEXED**

CORNER	SECTION	TOWNSHIP	RANGE
NW CORNER	3	85N	1W

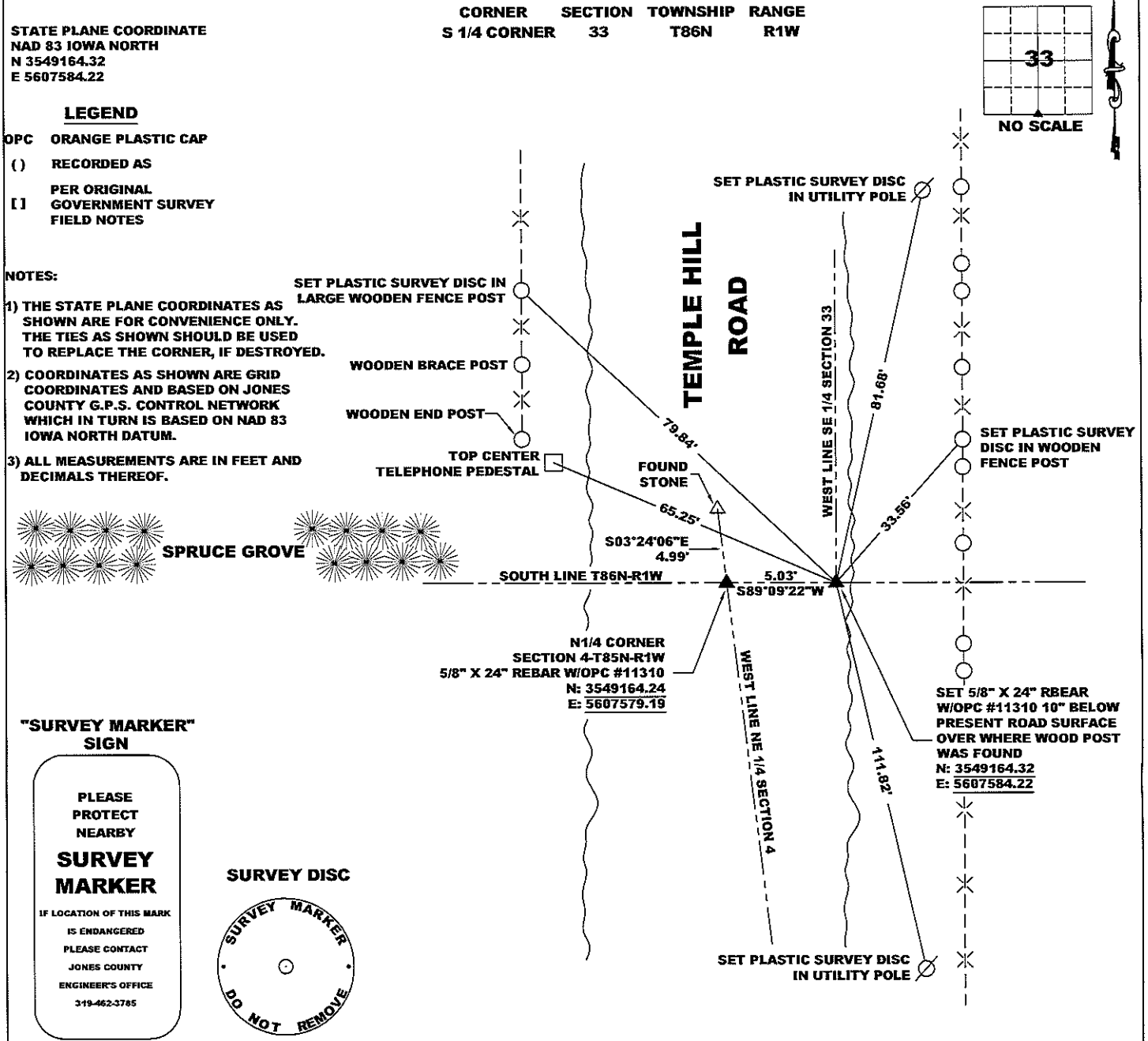
**JONES COUNTY ENGINEER'S OFFICE**



19501 HWY. 64, ANAMOSA, IOWA 52205  
 (319) 462-3785

# UNITED STATES PUBLIC LAND SURVEY CORNER CERTIFICATE

LAND SURVEY MONUMENTS SITUATED IN SECTION 33, TOWNSHIP 86 NORTH,  
 RANGE 1 WEST OF THE 5TH PRINCIPAL MERIDIAN, JONES COUNTY, IOWA.



PREVIOUSLY RECORDED IN N/A

**MONUMENT DESCRIPTION AND HOW ESTABLISHED** FOUND VERY OLD SPLIT RED CEDAR POST 4 FEET BELOW PRESENT ROAD SURFACE. IN THE PROCESS OF DIGGING FOR SECTION CORNERS IN THIS AREA, THE POST WAS DRAGGED OUT OF VERTICAL AND ENDED UP LYING ON ITS SIDE WHEN THE WET CLAYEY SOIL UNEXPECTEDLY PEELLED OUT EN MASSE TAKING THE POST WITH IT. WE FOUND SMALL WOOD CHIPS FROM THE POST THAT HAD SLOUGHED OFF IN A SMALL LOCUS, ABOUT THE DIAMETER OF THE POST. BY SCRAPING THE LOOSE SOIL BACK, WE WERE ABLE TO FOLLOW THE WOOD CHIPS DOWN TO A SANDY CLAY HORIZON. THE CHIPS, BY AND LARGE, WERE ORIENTED IN A VERTICAL OR NEAR VERTICAL ORIENTATION. FOUR 5/8" X 24" REBAR WITH ORANGE PLASTIC CAPS #11310 AND A PERMANENT MAGNET WERE SET SURROUNDING THE CIRCLE OF CHIPS TO PRESERVE WHAT WAS LEFT OF WHERE THE WOOD POST HAD ORIGINALLY BEEN. WE WERE PRESSED FOR TIME TO CLOSE THE EXCAVATION UP AS THE ROAD HAD BEEN CLOSED FOR 3+ HOURS AND THIS HELD LOCAL FARMERS FROM HAULING CORN FROM THE FIELDS. LATER WE SET A 5/8" X 24" REBAR WITH AN ORANGE PLASTIC CAP #11310 BELOW THE PRESENT ROAD SURFACE. A LIMESTONE WAS FOUND NEAR THE CENTERLINE OF TEMPLE HILL ROAD. AS COUNTY ROAD RECORDS STATE THAT TEMPLE HILL ROAD WAS LAID OUT ON THE WEST LINE OF THE NE FRACTIONAL 1/4 OF SECTION 4-T85N-R1W, THE STONE WAS ASSUMED TO BE WHERE A COUNTY SURVEYOR THOUGHT THE N 1/4 CORNER OF SAID SECTION 4 WAS TO BE. THERE IS NO RECORD OF HOW OR WHEN THIS STONE WAS SET (AND IT WAS DEFINITELY SET). THE GENERAL SIZE, SHAPE AND ORIENTATION IN THE GROUND TENDS TO INDICATE THAT IT WAS SET IN THE LATE 1880'S TO THE TURN OF THE CENTURY. THE STONE WAS TOO FAR NORTH OF LINE BASED ON THE WOOD POST AND A FOUND STONE AT THE NE CORNER OF SECTION 5-T85N-R1W (SEE THE SECTION CORNER CERTIFICATE FOR THE N 1/4 CORNER OF SECTION 4-T85-R1W FOR MORE DETAILS). ENDED BY SETTING 5/8" X 24" REBAR 10" BELOW PRESENT ROAD SURFACE ABOVE WHERE WOODEN POST WAS FOUND. POST IS AT THIS TIME BEING PRESERVED.

FIELD BOOK 344, PAGES 78 & 63. DATE OF SURVEY: 10/9/09, 5/17/10

I hereby certify that this land surveying document and the related survey work was performed by me or under my direct personal supervision and that I am a duly registered Land Surveyor under the laws of the State of Iowa.  
 Signed: *Clarence J. Walton* 5/19/10  
 Clarence J. Walton, L.S.  
 My Registration Renewal Date is December 31, 2011  
 Iowa License Number 11310  
 Pages or sheets covered by this seal: 4 of 5.

- A. THERE IS NO CERTIFICATE FOR THE CORNER ON FILE WITH THE RECORDER OF THE COUNTY IN WHICH THE CORNER IS LOCATED.
- B. THE CORNER MONUMENT HAS BEEN REPLACED OR MODIFIED.
- C. THE SURVEYOR IN RESPONSIBLE CHARGE OF THE LAND SURVEYING ACCEPTS A CORNER POSITION THAT DIFFERS FROM THAT SHOWN IN THE PUBLIC RECORDS OF THE COUNTY IN WHICH THE CORNER IS LOCATED.
- D. THE REFERENCE TIES REFERRED TO IN AN EXISTING PUBLIC RECORD NO LONGER EXIST.
- E. EXISTING CORNER TIES UPDATED.

**CORNERS TO BE INDEXED**

CORNER	SECTION	TOWNSHIP	RANGE
S 1/4 CORNER	33	86N	1W

**JONES COUNTY ENGINEER'S OFFICE**

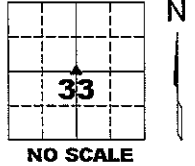
19501 HWY. 64, ANAMOSA, IOWA 52205  
 (319) 462-3785

# UNITED STATES PUBLIC LAND SURVEY CORNER CERTIFICATE

**LAND SURVEY MONUMENTS SITUATED IN SECTION 33, TOWNSHIP 86 NORTH,  
 RANGE 1 WEST OF THE 5TH PRINCIPAL MERIDIAN, JONES COUNTY, IOWA.**

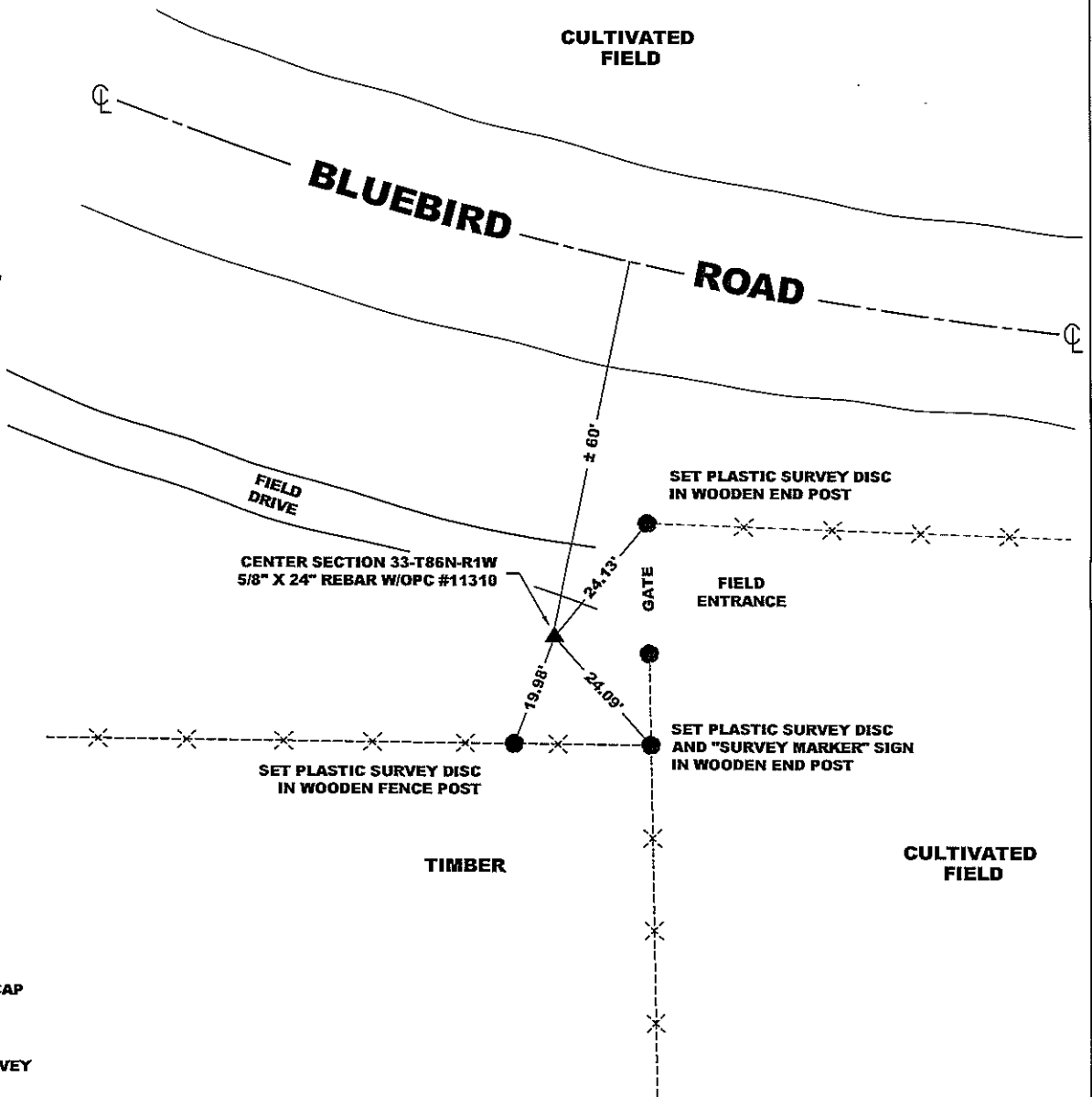
STATE PLANE COORDINATE  
 NAD 83 IOWA NORTH  
 N 3551882.38  
 E 5607525.07

CORNER SECTION TOWNSHIP RANGE  
 CENTER 33 T86N R1W



**NOTES:**

- 1) THE STATE PLANE COORDINATES AS SHOWN ARE FOR CONVENIENCE ONLY. THE TIES AS SHOWN SHOULD BE USED TO REPLACE THE CORNER, IF DESTROYED.
- 2) COORDINATES AS SHOWN ARE GRID COORDINATES AND BASED ON JONES COUNTY G.P.S. CONTROL NETWORK WHICH IN TURN IS BASED ON NAD 83 IOWA NORTH DATUM.
- 3) ALL MEASUREMENTS ARE IN FEET AND DECIMALS THEREOF.



**PAGE 5 of 5**

PREVIOUSLY RECORDED IN N/A,  
 MONUMENT DESCRIPTION AND HOW ESTABLISHED PROBED AND DUG IN AREA, FOUND NO EVIDENCE OF CORNER. SET 5/8" REBAR WITH ORANGE PLASTIC CAP #11310 FLUSH WITH PRESENT SURFACE OF GROUND AT INTERSECTION OF LINES BETWEEN OPPOSITE QUARTER CORNERS.

FIELD BOOK 344, PAGE 69. DATE OF SURVEY: 1/19/10



I hereby certify that this land surveying document and the related survey work was performed by me or under my direct personal supervision and that I am a duly registered Land Surveyor under the laws of the State of Iowa.  
 Signed: *Clarence J. Walton* 5/19/10  
 Clarence J. Walton, L.S.  
 My Registration Renewal Date is December 31, 2011  
 Iowa License Number 11310  
 Pages or sheets covered by this seal: 5 of 5.

- A. THERE IS NO CERTIFICATE FOR THE CORNER ON FILE WITH THE RECORDER OF THE COUNTY IN WHICH THE CORNER IS LOCATED.
- B. THE CORNER MONUMENT HAS BEEN REPLACED OR MODIFIED.
- C. THE SURVEYOR IN RESPONSIBLE CHARGE OF THE LAND SURVEYING ACCEPTS A CORNER POSITION THAT DIFFERS FROM THAT SHOWN IN THE PUBLIC RECORDS OF THE COUNTY IN WHICH THE CORNER IS LOCATED.
- D. THE REFERENCE TIES REFERRED TO IN AN EXISTING PUBLIC RECORD NO LONGER EXIST.
- E. EXISTING CORNER TIES UPDATED.

**CORNERS TO BE INDEXED**

CORNER	SECTION	TOWNSHIP	RANGE
CENTER	33	86N	1W

**JONES COUNTY ENGINEER'S OFFICE**



19501 HWY. 64, ANAMOSA, IOWA 52205  
 (319) 462-3785