

COPY

Jones County
Marie Krutzfield, Recorder
Fee Book 2010 1293


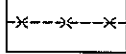
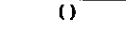
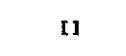
05/19/2010 @0413PM
ZSC SEC COR CERT
Book: Page: # Pages: 5
Total Fees: \$0.00

PREPARED BY

CLARENCE J. WALTON, JONES COUNTY ENGINEER'S OFFICE, 19501 HWY. 64, ANAMOSA, IOWA, 52205 (319) 462-3785

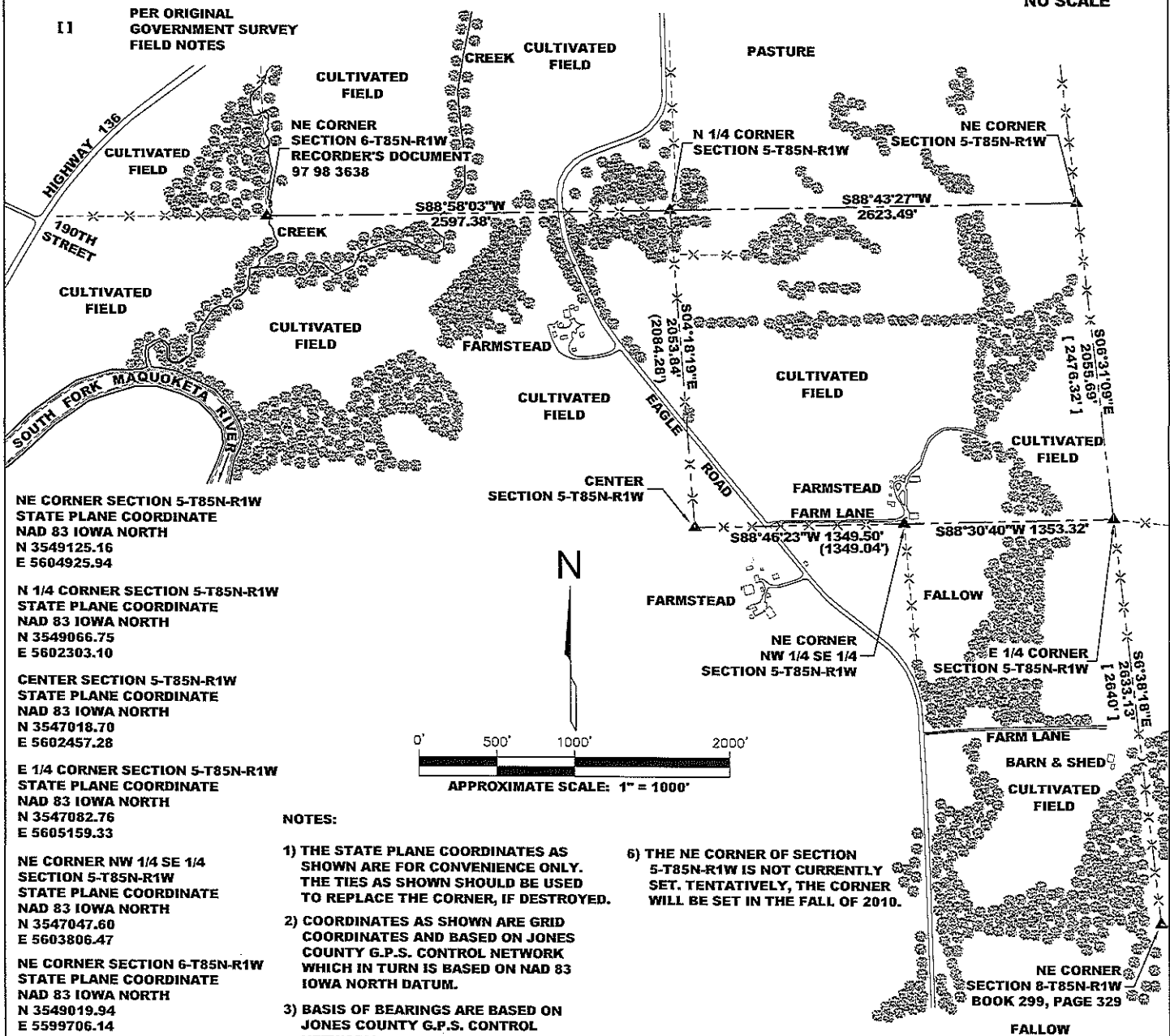
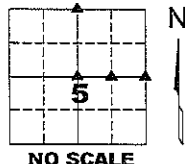
UNITED STATES PUBLIC LAND SURVEY SYSTEM CORNER RECOVERY AND RESTORATION PROGRAM LAND SURVEY MONUMENTS SITUATED IN SECTION 5, TOWNSHIP 85 NORTH, RANGE 1 WEST OF THE 5TH PRINCIPAL MERIDIAN, JONES COUNTY, IOWA.

LEGEND

-  HARDWOOD TIMBER
-  FENCE LINE
-  () RECORDED AS
-  [] PER ORIGINAL GOVERNMENT SURVEY FIELD NOTES

SECTION TOWNSHIP RANGE
5 T85N R1W

VICINITY MAP



NE CORNER SECTION 5-T85N-R1W
STATE PLANE COORDINATE
NAD 83 IOWA NORTH
N 3549125.16
E 5604925.94

N 1/4 CORNER SECTION 5-T85N-R1W
STATE PLANE COORDINATE
NAD 83 IOWA NORTH
N 3549066.75
E 5602303.10

CENTER SECTION 5-T85N-R1W
STATE PLANE COORDINATE
NAD 83 IOWA NORTH
N 3547018.70
E 5602457.28

E 1/4 CORNER SECTION 5-T85N-R1W
STATE PLANE COORDINATE
NAD 83 IOWA NORTH
N 3547082.76
E 5605159.33

NE CORNER NW 1/4 SE 1/4
SECTION 5-T85N-R1W
STATE PLANE COORDINATE
NAD 83 IOWA NORTH
N 3547047.60
E 5603806.47

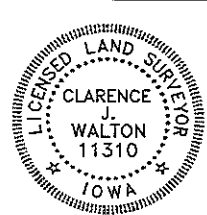
NE CORNER SECTION 6-T85N-R1W
STATE PLANE COORDINATE
NAD 83 IOWA NORTH
N 3549019.94
E 5599706.14

NE CORNER SECTION 8-T85N-R1W
STATE PLANE COORDINATE
NAD 83 IOWA NORTH
N 3544467.29
E 5605463.73

NOTES:

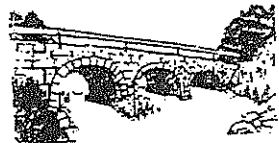
- 1) THE STATE PLANE COORDINATES AS SHOWN ARE FOR CONVENIENCE ONLY. THE TIES AS SHOWN SHOULD BE USED TO REPLACE THE CORNER, IF DESTROYED.
- 2) COORDINATES AS SHOWN ARE GRID COORDINATES AND BASED ON JONES COUNTY G.P.S. CONTROL NETWORK WHICH IN TURN IS BASED ON NAD 83 IOWA NORTH DATUM.
- 3) BASIS OF BEARINGS ARE BASED ON JONES COUNTY G.P.S. CONTROL NETWORK.
- 4) ALL MEASUREMENTS ARE IN FEET AND DECIMALS THEREOF. DISTANCES ON THIS COVER SHEET ARE GRID DISTANCES.
- 5) APPROXIMATE SCALE IS GIVEN IN ORDER TO FACILITATE NAVIGATION TO CORNERS IN CASE GPS IS NOT USED.
- 6) THE NE CORNER OF SECTION 5-T85N-R1W IS NOT CURRENTLY SET. TENTATIVELY, THE CORNER WILL BE SET IN THE FALL OF 2010.

PAGE 1 of 5



I hereby certify that this land surveying document and the related survey work was performed by me or under my direct personal supervision and that I am a duly registered Land Surveyor under the laws of the State of Iowa.
Signed: *Clarence J. Walton* 5/19/10
Clarence J. Walton, L.S.
My Registration Renewal Date is December 31, 2011
Iowa License Number 11310
Pages or sheets covered by this seal: 1 of 5.

JONES COUNTY ENGINEER'S OFFICE



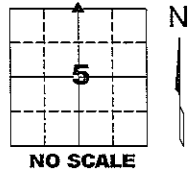
19501 HWY. 64, ANAMOSA, IOWA 52205
(319) 462-3785

UNITED STATES PUBLIC LAND SURVEY CORNER CERTIFICATE

LAND SURVEY MONUMENTS SITUATED IN SECTION 5, TOWNSHIP 85 NORTH, RANGE 1 WEST OF THE 5TH PRINCIPAL MERIDIAN, JONES COUNTY, IOWA.

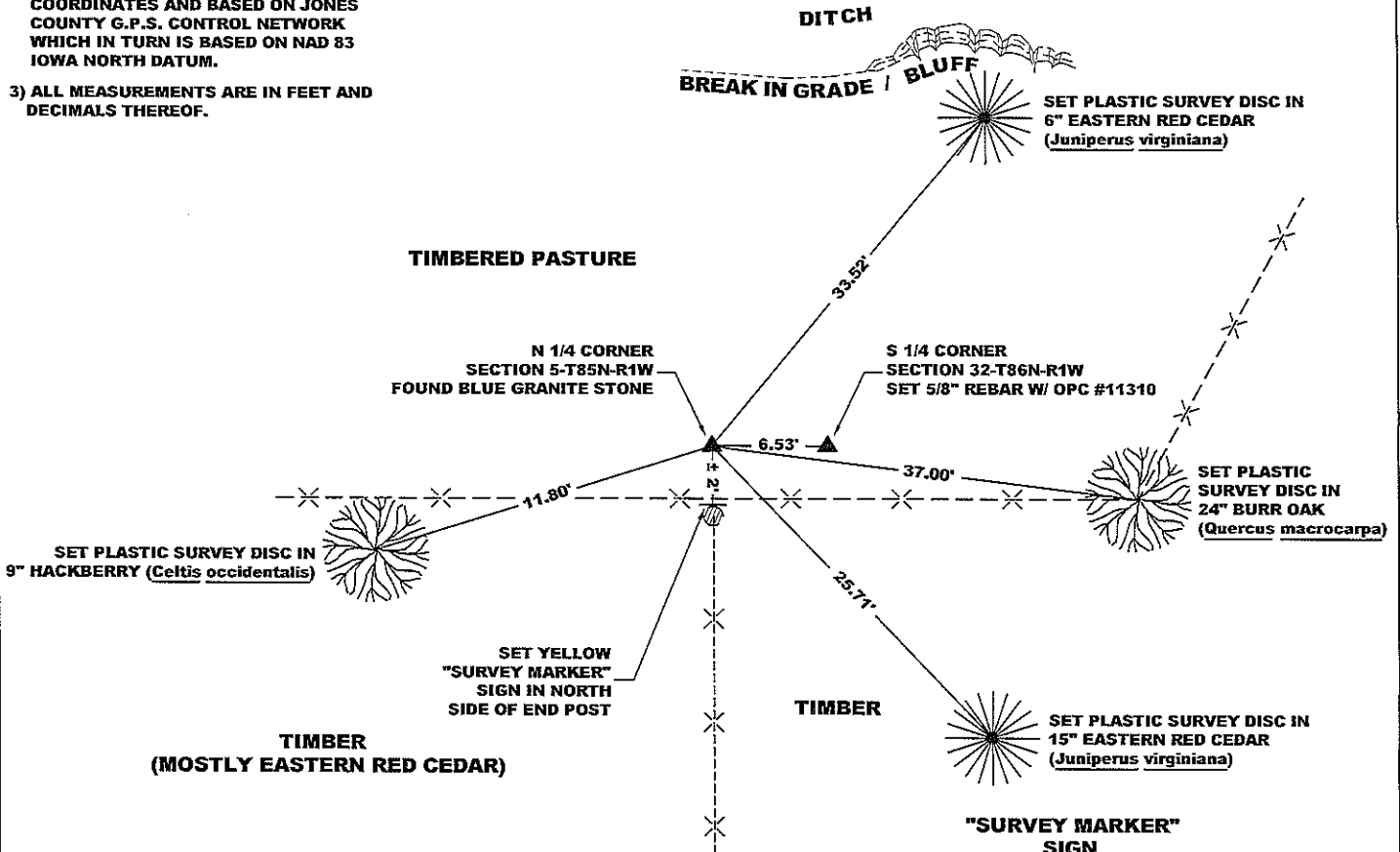
OFFICE FILE NO.
STATE PLANE COORDINATE
NAD 83 IOWA NORTH
N 3549066.75
E 5602303.10

CORNER SECTION TOWNSHIP RANGE
N 1/4 CORNER 5 T85N R1W



NOTES:

- 1) THE STATE PLANE COORDINATES AS SHOWN ARE FOR CONVENIENCE ONLY. THE TIES AS SHOWN SHOULD BE USED TO REPLACE THE CORNER, IF DESTROYED.
- 2) COORDINATES AS SHOWN ARE GRID COORDINATES AND BASED ON JONES COUNTY G.P.S. CONTROL NETWORK WHICH IN TURN IS BASED ON NAD 83 IOWA NORTH DATUM.
- 3) ALL MEASUREMENTS ARE IN FEET AND DECIMALS THEREOF.




- LEGEND**
- OPC ORANGE PLASTIC CAP
 - () RECORDED AS
 - PER ORIGINAL
 - [] GOVERNMENT SURVEY FIELD NOTES

PLEASE PROTECT NEARBY

SURVEY MARKER

IF LOCATION OF THIS MARK IS ENDANGERED PLEASE CONTACT JONES COUNTY ENGINEER'S OFFICE 319-462-3785



PAGE 2 of 5

PREVIOUSLY RECORDED IN N/A

MONUMENT DESCRIPTION AND HOW ESTABLISHED FOUND 9" X 9" X 22" * BLUE GRANITE STONE W/ 5/8" SMOOTH REBAR ON WEST SIDE OF STONE AMIDST NUMEROUS LIMESTONE ROCKS. TIES FOUND IN THE FILE FOR PROJECT FA 814 IN THE RECORDS OF THE JONES COUNTY ENGINEER'S OFFICE CALLS FOR A GRANITE STONE WITH A 5/8" IRON PIN. THE SAME TIES ALSO CALL FOR A DISTANCE OF 37.4 FEET TO A SPIKE IN A 15" BURR OAK LYING EAST OF THE STONE. THE BURR OAK WAS STILL STANDING AND WE MEASURED 37.00' TO THE FACE OF THE TREE. ALL OTHER TIES WERE GONE. * 22" TAKEN FROM THE THE FIELD NOTES AND NOT VERIFIED BY US IN THE FIELD.

FIELD BOOK 344, PAGE 76. DATE OF SURVEY: 10/27/09

I hereby certify that this land surveying document and the related survey work was performed by me or under my direct personal supervision and that I am a duly registered Land Surveyor under the laws of the State of Iowa.


Signed: *Clarence J. Walton* 5/19/16

Clarence J. Walton, L.S.
My Registration Renewal Date is December 31, 2011
Iowa License Number 11310
Pages or sheets covered by this seal: 2 of 5.

- A. THERE IS NO CERTIFICATE FOR THE CORNER ON FILE WITH THE RECORDER OF THE COUNTY IN WHICH THE CORNER IS LOCATED.
- B. THE CORNER MONUMENT HAS BEEN REPLACED OR MODIFIED.
- C. THE SURVEYOR IN RESPONSIBLE CHARGE OF THE LAND SURVEYING ACCEPTS A CORNER POSITION THAT DIFFERS FROM THAT SHOWN IN THE PUBLIC RECORDS OF THE COUNTY IN WHICH THE CORNER IS LOCATED.
- D. THE REFERENCE TIES REFERRED TO IN AN EXISTING PUBLIC RECORD NO LONGER EXIST.
- E. EXISTING CORNER TIES UPDATED.

CORNERS TO BE INDEXED			
CORNER	SECTION	TOWNSHIP	RANGE
N 1/4 CORNER	5	85N	1W

JONES COUNTY ENGINEER'S OFFICE



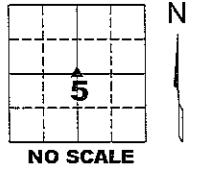
19501 HWY. 64, ANAMOSA, IOWA 52205
(319) 462-3785

UNITED STATES PUBLIC LAND SURVEY CORNER CERTIFICATE

LAND SURVEY MONUMENTS SITUATED IN SECTION 5, TOWNSHIP 85 NORTH,
 RANGE 1 WEST OF THE 5TH PRINCIPAL MERIDIAN, JONES COUNTY, IOWA.

STATE PLANE COORDINATE
 NAD 83 IOWA NORTH
 N 3547018.70
 E 5602457.28

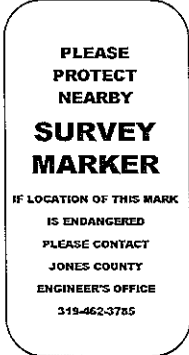
CORNER SECTION TOWNSHIP RANGE
 CENTER 5 T85N R1W



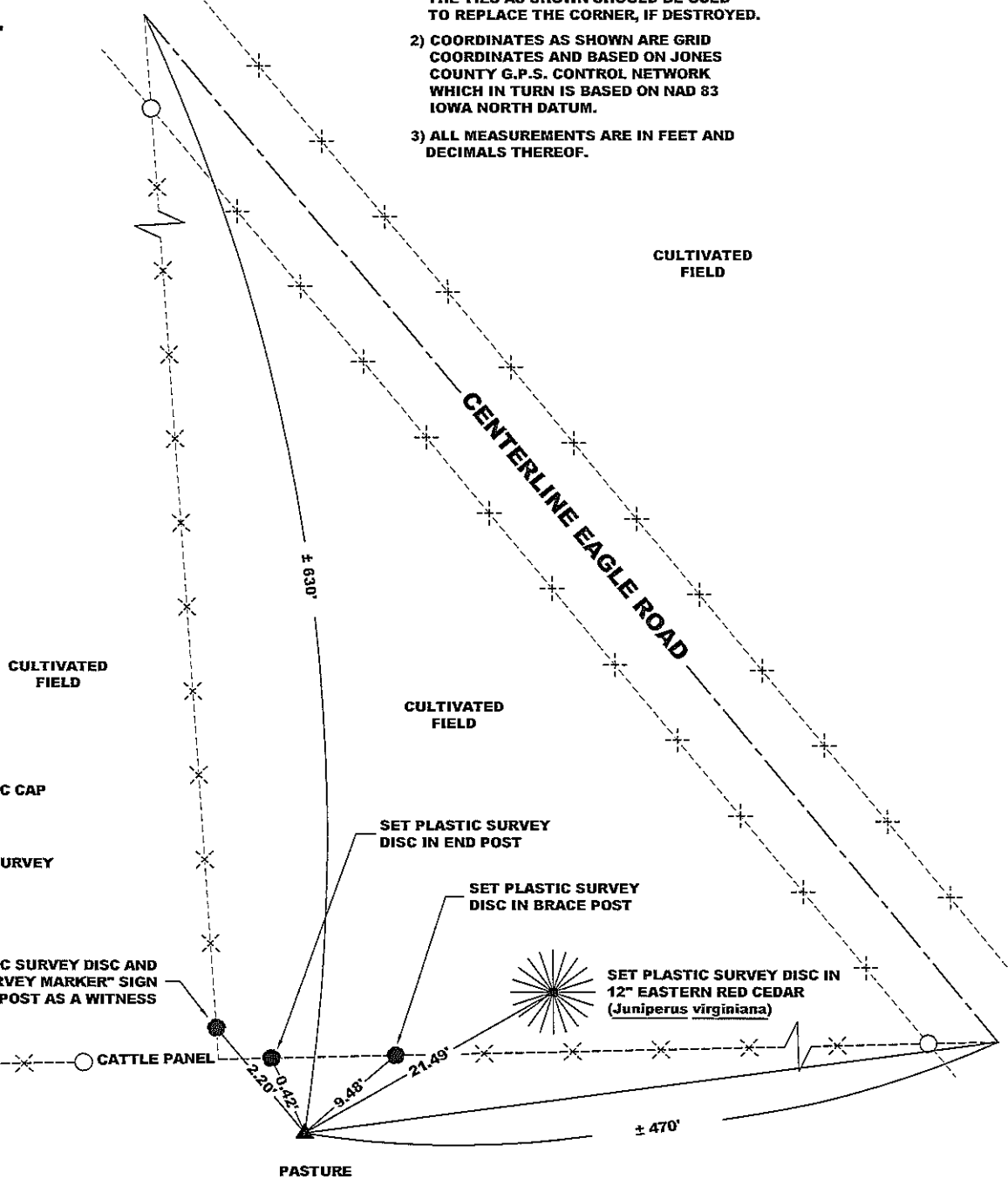
NOTES:

- 1) THE STATE PLANE COORDINATES AS SHOWN ARE FOR CONVENIENCE ONLY. THE TIES AS SHOWN SHOULD BE USED TO REPLACE THE CORNER, IF DESTROYED.
- 2) COORDINATES AS SHOWN ARE GRID COORDINATES AND BASED ON JONES COUNTY G.P.S. CONTROL NETWORK WHICH IN TURN IS BASED ON NAD 83 IOWA NORTH DATUM.
- 3) ALL MEASUREMENTS ARE IN FEET AND DECIMALS THEREOF.

"SURVEY MARKER" SIGN



SURVEY DISC



LEGEND

- OPC ORANGE PLASTIC CAP
- () RECORDED AS
- PER ORIGINAL
- [] GOVERNMENT SURVEY FIELD NOTES

PAGE 3 of 5

PREVIOUSLY RECORDED IN RECORDER'S DOCUMENT 2000 2124, JONES COUNTY RECORDER'S OFFICE.
 MONUMENT DESCRIPTION AND HOW ESTABLISHED FOUND 10"X8"X2" LIMESTONE, 18" BELOW PRESENT GROUND LEVEL. THERE IS A RECORDED SURVEY DATED DECEMBER 19 & 20, 1868 IN THE RED SURVEYOR'S RECORD BOOK, PAGE 263 IN THE JONES COUNTY, IOWA RECORDER'S OFFICE. SET A 5/8" X 24" REBAR WITH ORANGE PLASTIC CAP #11310 OVER THE CENTER OF MASS OF STONE, LEAVING REBAR STICKING OUT OF GROUND 6". STONE MAY BE DIFFICULT TO PROBE FOR AS WE HAD A GREAT DEAL OF DIFFICULTY PROBING FOR STONE (LET ALONE DIGGING FOR IT!) DUE TO GREAT DEAL OF ROOTS THAT RATHER EFFECTIVELY HID THE STONE FROM BEING FOUND.

FIELD BOOK 344, PAGE 72. DATE OF SURVEY: 11/30/09



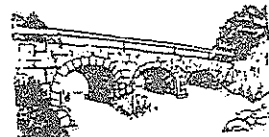
I hereby certify that this land surveying document and the related survey work was performed by me or under my direct personal supervision and that I am a duly registered Land Surveyor under the laws of the State of Iowa.
 Signed: *Clarence J. Walton* 5/19/10
 Clarence J. Walton, L.S.
 My Registration Renewal Date is December 31, 2011
 Iowa License Number 11310
 Pages or sheets covered by this seal: 3 of 5.

- A. THERE IS NO CERTIFICATE FOR THE CORNER ON FILE WITH THE RECORDER OF THE COUNTY IN WHICH THE CORNER IS LOCATED.
- B. THE CORNER MONUMENT HAS BEEN REPLACED OR MODIFIED.
- C. THE SURVEYOR IN RESPONSIBLE CHARGE OF THE LAND SURVEYING ACCEPTS A CORNER POSITION THAT DIFFERS FROM THAT SHOWN IN THE PUBLIC RECORDS OF THE COUNTY IN WHICH THE CORNER IS LOCATED.
- D. THE REFERENCE TIES REFERRED TO IN AN EXISTING PUBLIC RECORD NO LONGER EXIST.
- E. EXISTING CORNER TIES UPDATED.

CORNERS TO BE INDEXED

CORNER	SECTION	TOWNSHIP	RANGE
CENTER	5	85N	1W

JONES COUNTY ENGINEER'S OFFICE



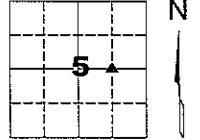
19501 HWY. 64, ANAMOSA, IOWA 52205
 (319) 462-3785

UNITED STATES PUBLIC LAND SURVEY CORNER CERTIFICATE

LAND SURVEY MONUMENTS SITUATED IN SECTION 5, TOWNSHIP 85 NORTH, RANGE 1 WEST OF THE 5TH PRINCIPAL MERIDIAN, JONES COUNTY, IOWA.

STATE PLANE COORDINATE
NAD 83 IOWA NORTH
N 3547047.60
E 5603806.47

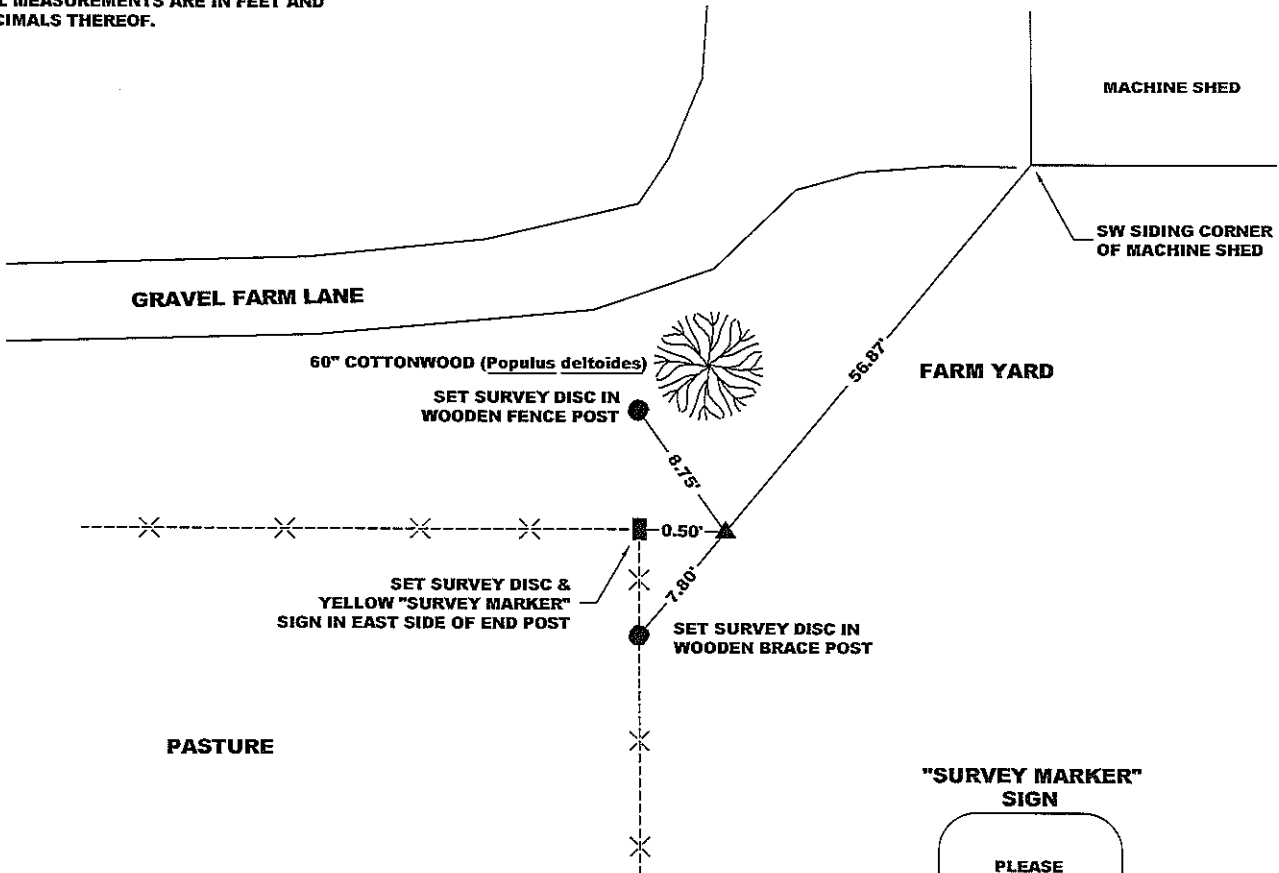
CORNER SECTION TOWNSHIP RANGE
NE CORNER 5 T85N R1W
NW 1/4 SE 1/4



NO SCALE

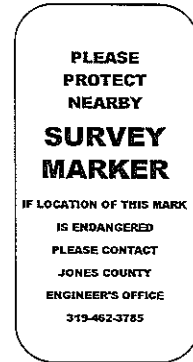
NOTES:

- 1) THE STATE PLANE COORDINATES AS SHOWN ARE FOR CONVENIENCE ONLY. THE TIES AS SHOWN SHOULD BE USED TO REPLACE THE CORNER, IF DESTROYED.
- 2) COORDINATES AS SHOWN ARE GRID COORDINATES AND BASED ON JONES COUNTY G.P.S. CONTROL NETWORK WHICH IN TURN IS BASED ON NAD 83 IOWA NORTH DATUM.
- 3) ALL MEASUREMENTS ARE IN FEET AND DECIMALS THEREOF.



- LEGEND**
- OPC ORANGE PLASTIC CAP
 - () RECORDED AS
 - PER ORIGINAL GOVERNMENT SURVEY FIELD NOTES

"SURVEY MARKER" SIGN



SURVEY DISC



PAGE 4 of 5

PREVIOUSLY RECORDED IN N/A
MONUMENT DESCRIPTION AND HOW ESTABLISHED FOUND 9" X 11" X ?" LIMESTONE PER SURVEY DATED DECEMBER 19 & 20, 1868 AND RECORDED IN THE RED SURVEYOR'S RECORD, PAGE 263 IN THE JONES COUNTY, IOWA RECORDER'S OFFICE. STONE IS 5" ABOVE PRESENT GROUND SURFACE, SET A 5/8" X 24" REBAR ON SOUTH EDGE OF STONE TO SUPPORT IT AS WELL AS DRAW ATTENTION TO IT. SET A YELLOW "SURVEY MARKER" SIGN IN THE EAST SIDE OF THE RAILROAD TIE END POST. TIES ARE TO THE TOP CENTER OF THE STONE.

FIELD BOOK 344, PAGE 72. DATE OF SURVEY: 11/30/09



I hereby certify that this land surveying document and the related survey work was performed by me or under my direct personal supervision and that I am a duly registered Land Surveyor under the laws of the State of Iowa.

Signed: *Clarence J. Walton* 5/19/10
Clarence J. Walton, L.S.
My Registration Renewal Date is December 31, 2011
Iowa License Number 11310
Pages or sheets covered by this seal: 4 of 5.

- A. THERE IS NO CERTIFICATE FOR THE CORNER ON FILE WITH THE RECORDER OF THE COUNTY IN WHICH THE CORNER IS LOCATED.
- B. THE CORNER MONUMENT HAS BEEN REPLACED OR MODIFIED.
- C. THE SURVEYOR IN RESPONSIBLE CHARGE OF THE LAND SURVEYING ACCEPTS A CORNER POSITION THAT DIFFERS FROM THAT SHOWN IN IN THE PUBLIC RECORDS OF THE COUNTY IN WHICH THE CORNER IS LOCATED.
- D. THE REFERENCE TIES REFERRED TO IN AN EXISTING PUBLIC RECORD NO LONGER EXIST.
- E. EXISTING CORNER TIES UPDATED.

CORNERS TO BE INDEXED

CORNER	SECTION	TOWNSHIP	RANGE
NE CORNER	5	85N	1W
NW 1/4 SE 1/4	5	85N	1W
NW CORNER	5	85N	1W
NE 1/4 SE 1/4	5	85N	1W
SE CORNER	5	85N	1W
SW 1/4 NE frl. 1/4	5	85N	1W
SW CORNER	5	85N	1W
SE 1/4 NE frl. 1/4	5	85N	1W

JONES COUNTY ENGINEER'S OFFICE



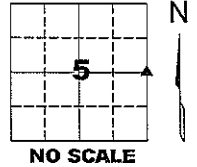
19501 HWY. 64, ANAMOSA, IOWA 52205
(319) 462-3785

UNITED STATES PUBLIC LAND SURVEY CORNER CERTIFICATE

**LAND SURVEY MONUMENTS SITUATED IN SECTION 5, TOWNSHIP 85 NORTH,
 RANGE 1 WEST OF THE 5TH PRINCIPAL MERIDIAN, JONES COUNTY, IOWA.**

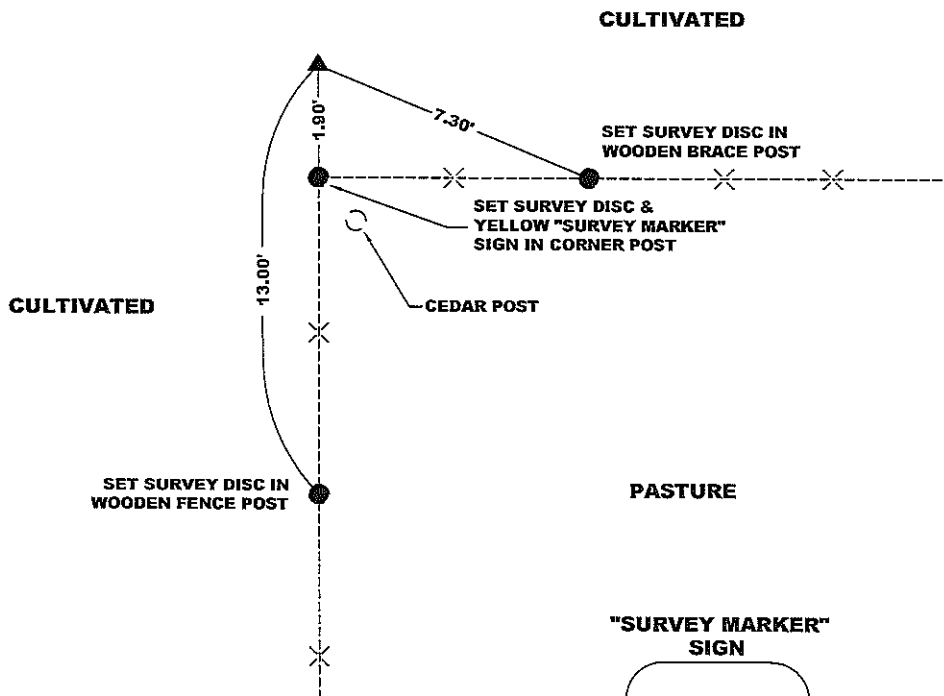
STATE PLANE COORDINATE
 NAD 83 IOWA NORTH
 N 3547082.76
 E 5605159.33

CORNER SECTION TOWNSHIP RANGE
 E 1/4 CORNER 5 T85N R1W



NOTES:

- 1) THE STATE PLANE COORDINATES AS SHOWN ARE FOR CONVENIENCE ONLY. THE TIES AS SHOWN SHOULD BE USED TO REPLACE THE CORNER, IF DESTROYED.
- 2) COORDINATES AS SHOWN ARE GRID COORDINATES AND BASED ON JONES COUNTY G.P.S. CONTROL NETWORK WHICH IN TURN IS BASED ON NAD 83 IOWA NORTH DATUM.
- 3) ALL MEASUREMENTS ARE IN FEET AND DECIMALS THEREOF.



CULTIVATED

CULTIVATED

PASTURE

"SURVEY MARKER" SIGN

PLEASE
 PROTECT
 NEARBY
**SURVEY
 MARKER**
IF LOCATION OF THIS MARK
 IS ENDANGERED
 PLEASE CONTACT
 JONES COUNTY
 ENGINEER'S OFFICE
 319-462-3785

SURVEY DISC



LEGEND

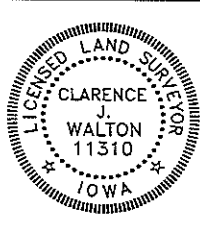
- OPC ORANGE PLASTIC CAP
- () RECORDED AS
- PER ORIGINAL
- [] GOVERNMENT SURVEY FIELD NOTES

PAGE 5 of 5

PREVIOUSLY RECORDED IN N/A

MONUMENT DESCRIPTION AND HOW ESTABLISHED 15" X 22" X 7" RED GRANITE STONE 4" ABOVE PRESENT SURFACE. SET 5/8" X 24" REBAR WITH ORANGE PLASTIC CAP #11310 AT NORTH SIDE OF STONE 4" ABOVE PRESENT SURFACE (FOR DETECTION PURPOSE ONLY). SET YELLOW "SURVEY MARKER" SIGN IN CORNER POST FOR WITNESS TO STONE. MEASUREMENTS TAKEN TO TOP CENTER OF STONE.

FIELD BOOK 344, PAGE 71. DATE OF SURVEY: 11/30/09



I hereby certify that this land surveying document and the related survey work was performed by me or under my direct personal supervision and that I am a duly registered Land Surveyor under the laws of the State of Iowa.
 Signed: *Clarence J. Walton* 5/19/10
 Clarence J. Walton, L.S.
 My Registration Renewal Date is December 31, 2011
 Iowa License Number 11310
 Pages or sheets covered by this seal: 5 of 5.

- A. THERE IS NO CERTIFICATE FOR THE CORNER ON FILE WITH THE RECORDER OF THE COUNTY IN WHICH THE CORNER IS LOCATED.
- B. THE CORNER MONUMENT HAS BEEN REPLACED OR MODIFIED.
- C. THE SURVEYOR IN RESPONSIBLE CHARGE OF THE LAND SURVEYING ACCEPTS A CORNER POSITION THAT DIFFERS FROM THAT SHOWN IN THE PUBLIC RECORDS OF THE COUNTY IN WHICH THE CORNER IS LOCATED.
- D. THE REFERENCE TIES REFERRED TO IN AN EXISTING PUBLIC RECORD NO LONGER EXIST.
- E. EXISTING CORNER TIES UPDATED.

CORNERS TO BE INDEXED

CORNER	SECTION	TOWNSHIP	RANGE
E 1/4 CORNER	5	85N	1W
W 1/4 CORNER	4	85N	1W

JONES COUNTY ENGINEER'S OFFICE



19501 HWY. 64, ANAMOSA, IOWA 52205
 (319) 462-3785

THIS IS NOT A CERTIFICATION

JONES COUNTY ENGINEER'S OFFICE, 19501 HWY. 64, ANAMOSA, IOWA, 52205 (319)462-3785

UNITED STATES PUBLIC LAND SURVEY CORNER CERTIFICATE

LAND SURVEY MONUMENTS SITUATED IN SECTION 5, TOWNSHIP 85
NORTH, RANGE 1 WEST OF THE 5TH P.M., JONES COUNTY, IOWA

CORNERS TO BE INDEXED

CORNER SECTION TOWNSHIP RANGE
N-QUARTER 5 85N 1W

OFFICE FILE NO.

85105c_110504.tif

REF:
JONES COUNTY SURVEY CREW.
FA 814

FD. STONE
N1/4-5-85-1

SPK IN
12" ELM

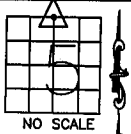
101.1'

80.9'

37.4'

SPK. 18"
BURR
OAK

SPK IN
15"
BURR
OAK



NO DATE GIVEN ON INDEX CARD.

1547

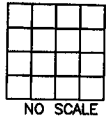
PREVIOUSLY RECORDED IN BOOK _____, PAGE _____
MONUMENT DESCRIPTION AND HOW ESTABLISHED FOUND

9"x9"x22" GRANITE STONE WITH LIMESTONE AROUND. SET 5/8"x9"
IRON PIN ALONGSIDE. TIES AS INDICATED. NORTH QUARTER CORNER
SECTION 5, TOWNSHIP 85 NORTH, RANGE 1 WEST OF THE 5TH
PRINCIPAL MERIDIAN, JONES COUNTY, IOWA.

CORNERS TO BE INDEXED

CORNER SECTION TOWNSHIP RANGE

OFFICE FILE NO.

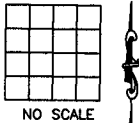


PREVIOUSLY RECORDED IN BOOK _____, PAGE _____
MONUMENT DESCRIPTION AND HOW ESTABLISHED _____

CORNERS TO BE INDEXED

CORNER SECTION TOWNSHIP RANGE

OFFICE FILE NO.

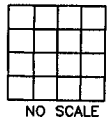


PREVIOUSLY RECORDED IN BOOK _____, PAGE _____
MONUMENT DESCRIPTION AND HOW ESTABLISHED _____

CORNERS TO BE INDEXED

CORNER SECTION TOWNSHIP RANGE

OFFICE FILE NO.



PREVIOUSLY RECORDED IN BOOK _____, PAGE _____
MONUMENT DESCRIPTION AND HOW ESTABLISHED _____

~~I hereby declare that this plat, survey or report
was made by me or under my direct personal
supervision and that I am a duly registered Land
Surveyor under the laws of the State of Iowa.~~

Signed:

SEAL

JONES COUNTY
ENGINEER'S OFFICE

19501 HWY. 64,
ANAMOSA, IOWA,
52205 (319)462-3785

A