

23785

2000 2124

FILED
RECORDERS OFFICE
JONES COUNTY IOWA

00 JUL -7 AM 11:16

MARIE KRUTZFIELD
RECORDER 6.00 PD

Prepared by Wm. Burger Land Surveyors 510 3rd Street West Court, Worthington, Iowa Phone 319 - 655 2028

UNITED STATES PUBLIC LAND SURVEY CORNER CERTIFICATE

Land Survey Monuments situated in Section 5, Township 85N, Range 1W, of the Fifth Principal Meridian, Jones County, Iowa. Previously recorded in NA in the Office of the County Recorder

Monument Description and Remarks: (No Corner Certificates found at the County Recorders Office)

W1/4 CORNER -- Set 1/2" Iron rod w/yellow cap #12642 on line between the NW corner

of Section 5 and used topo call on original notes 1080.42 feet South of Bluff Bottom

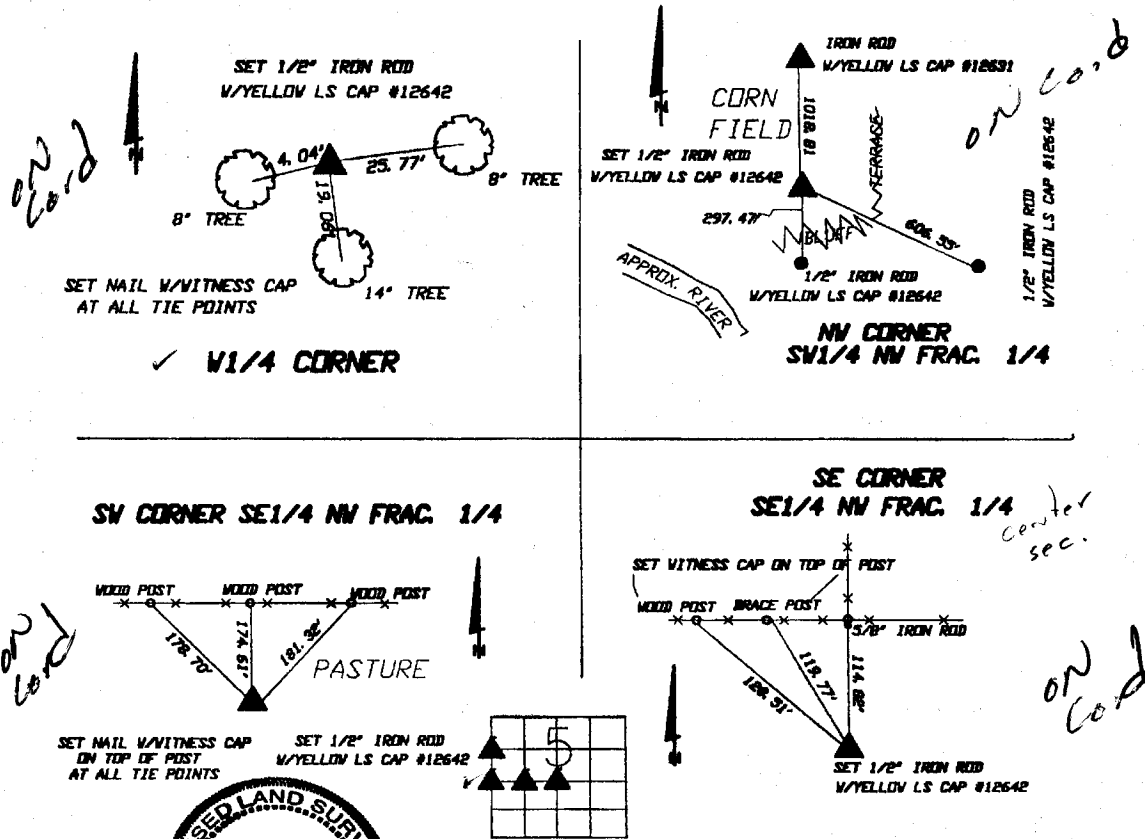
NW CORNER SW1/4 NW FRAC. 1/4 -- Proportional corner on line between W1/4 corner and the NW corner in relationship to original notes.

SW CORNER SE1/4 NW FRAC. 1/4 -- Set corner on line and mid-way between W1/4 corner and center of Section.

SE CORNER SE1/4 NW FRAC. 1/4 -- Run straight lines from opposite 1/4 corner and set corner @ point of intersection.

Clay Twp.

PLAN VIEW



SEAL

SEC. 5 TWP. 85N RANGE 1W

I hereby certify that this land surveying document was prepared and related survey work was performed by me or under my direct personal supervision and that I am a duly licensed Land Surveyor under the laws of the State of Iowa.

William H. Burger 6/20/2000 Date
William H. Burger
License number 12642

My license renewal date is December 31, 2000
Pages or Sheets covered by this seal: Sheet 1 of 1

CORNERS TO BE INDEXED

- NW CORNER SW1/4 NW FRAC. 1/4 SEC. 5, T85N, R1W
- SW CORNER SE1/4 NW FRAC. 1/4 SEC. 5, T85N, R1W
- SE CORNER SE1/4 NW FRAC. 1/4 SEC. 5, T85N, R1W
- W1/4 CORNER SEC. 5, T85N, R1W