

COPY

Jones County
Marie Krutzfield, Recorder
Fee Book 2010 1290
05/19/2010 @1245PM
ZSC SEC COR CERT
Book: Page: # Pages: 2
Total Fees: \$0.00

PREPARED BY
CLARENCE J. WALTON, JONES COUNTY ENGINEER'S OFFICE, 19501 HWY. 64, ANAMOSA, IOWA, 52205 (319) 462-3785

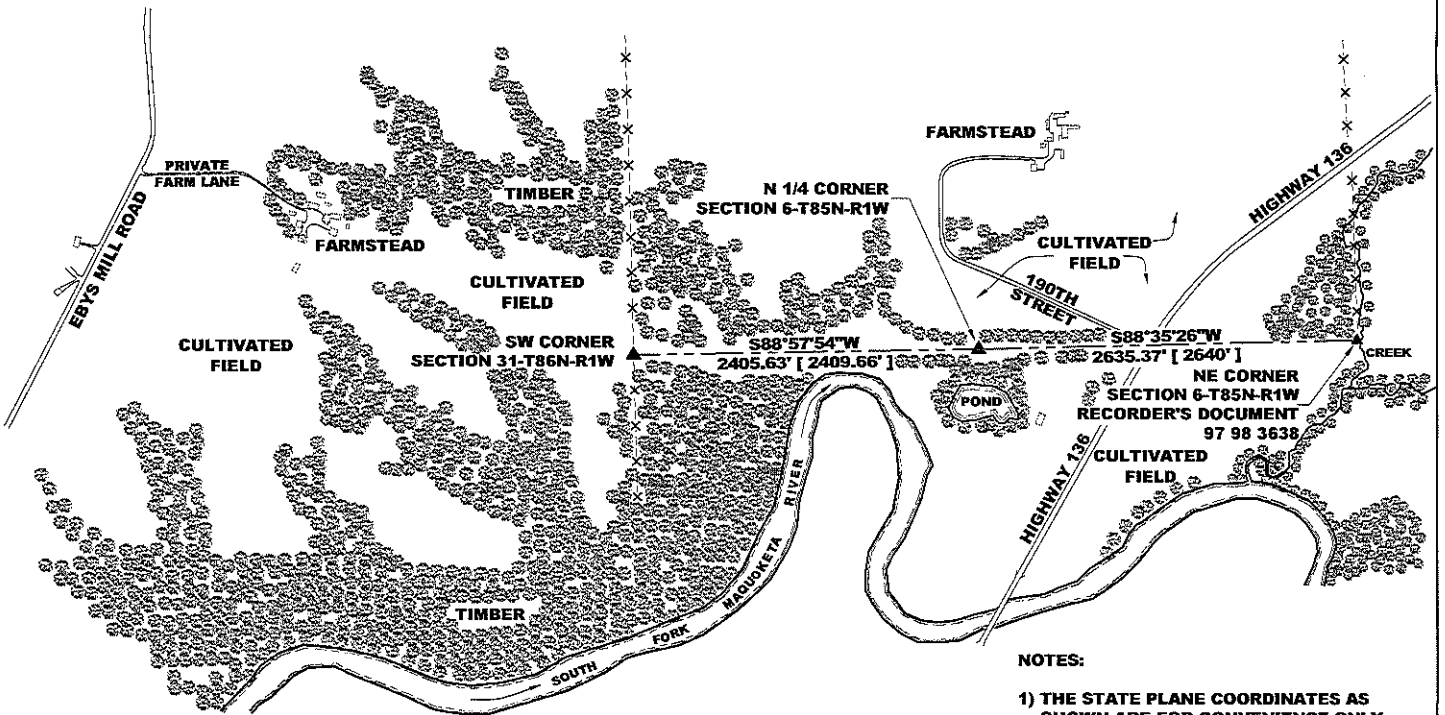
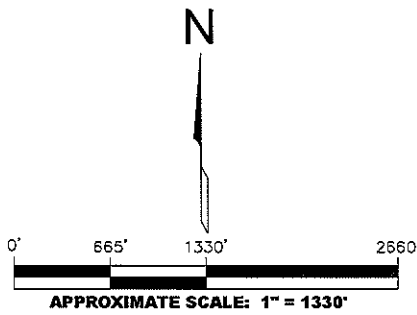
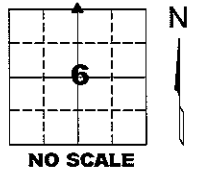
COVER SHEET
UNITED STATES PUBLIC LAND SURVEY CORNER CERTIFICATE
LAND SURVEY MONUMENTS SITUATED IN SECTION 6, TOWNSHIP 85 NORTH,
RANGE 1 WEST OF THE 5TH PRINCIPAL MERIDIAN, JONES COUNTY, IOWA.

NE CORNER SECTION 6-T85N-R1W
STATE PLANE COORDINATE
NAD 83 IOWA NORTH
N 3549019.94
E 5599706.14

N 1/4 CORNER SECTION 6-T85N-R1W
STATE PLANE COORDINATE
NAD 83 IOWA NORTH
N 3548955.12
E 5597071.57

SW CORNER SECTION 31-T86N-R1W
STATE PLANE COORDINATE
NAD 83 IOWA NORTH
N 3548911.66
E 5594666.33

SECTION TOWNSHIP RANGE
6 T85N R1W



NOTES:

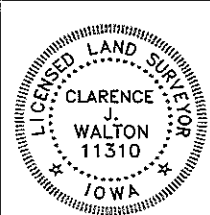
- 1) THE STATE PLANE COORDINATES AS SHOWN ARE FOR CONVENIENCE ONLY. THE TIES AS SHOWN SHOULD BE USED TO REPLACE THE CORNER, IF DESTROYED.
- 2) COORDINATES AS SHOWN ARE GRID COORDINATES AND BASED ON JONES COUNTY G.P.S. CONTROL NETWORK WHICH IN TURN IS BASED ON NAD 83 IOWA NORTH DATUM.
- 3) BASIS OF BEARINGS ARE BASED ON JONES COUNTY G.P.S. CONTROL NETWORK.
- 4) ALL MEASUREMENTS ARE IN FEET AND DECIMALS THEREOF. DISTANCES ON THIS COVER SHEET ARE GRID DISTANCES.
- 5) APPROXIMATE SCALE IS GIVEN IN ORDER TO FACILITATE NAVIGATION TO CORNERS IN CASE GPS IS NOT USED.

LEGEND

- HARDWOOD TIMBER
- FENCE LINE
- RECORDED AS
- PER ORIGINAL GOVERNMENT SURVEY FIELD NOTES

VICINITY MAP

PAGE 1 of 2



I hereby certify that this land surveying document and the related survey work was performed by me or under my direct personal supervision and that I am a duly registered Land Surveyor under the laws of the State of Iowa.
Signed: *Clarence J. Walton* 5/19/10
Clarence J. Walton, L.S.
My Registration Renewal Date is December 31, 2011
Iowa License Number 11310
Pages or sheets covered by this seal: 1 of 2.

JONES COUNTY ENGINEER'S OFFICE



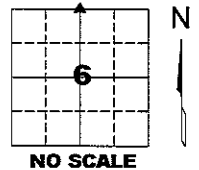
19501 HWY. 64, ANAMOSA, IOWA 52205
(319) 462-3785

UNITED STATES PUBLIC LAND SURVEY CORNER CERTIFICATE

LAND SURVEY MONUMENTS SITUATED IN SECTION 6, TOWNSHIP 85 NORTH,
 RANGE 1 WEST OF THE 5TH PRINCIPAL MERIDIAN, JONES COUNTY, IOWA.

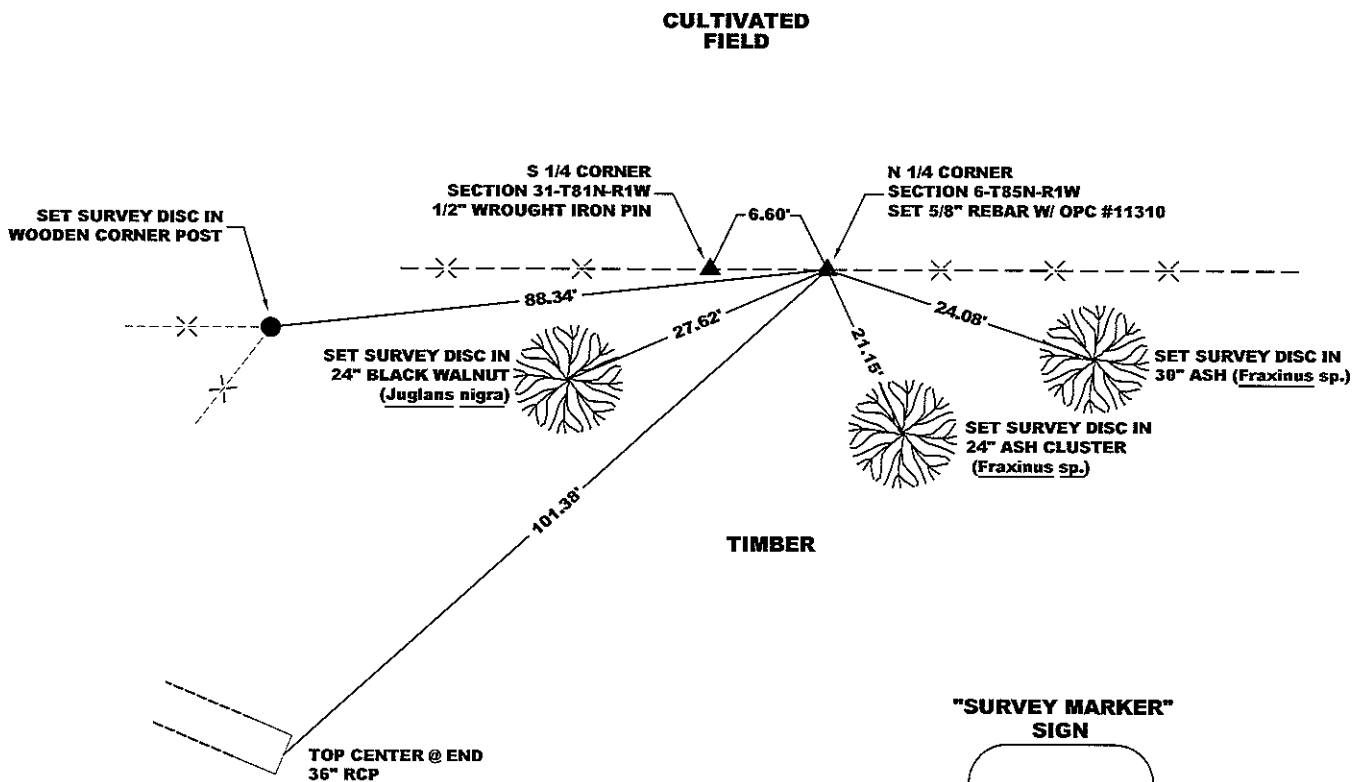
STATE PLANE COORDINATE
 NAD 83 IOWA NORTH
 N 3548955.12
 E 5597071.57

CORNER SECTION TOWNSHIP RANGE
 N 1/4 CORNER 6 T85N R1W



NOTES:

- 1) THE STATE PLANE COORDINATES AS SHOWN ARE FOR CONVENIENCE ONLY. THE TIES AS SHOWN SHOULD BE USED TO REPLACE THE CORNER, IF DESTROYED.
- 2) COORDINATES AS SHOWN ARE GRID COORDINATES AND BASED ON JONES COUNTY G.P.S. CONTROL NETWORK WHICH IN TURN IS BASED ON NAD 83 IOWA NORTH DATUM.
- 3) ALL MEASUREMENTS ARE IN FEET AND DECIMALS THEREOF.



"SURVEY MARKER" SIGN

PLEASE PROTECT NEARBY
SURVEY MARKER

IF LOCATION OF THIS MARK IS ENDANGERED PLEASE CONTACT JONES COUNTY ENGINEER'S OFFICE 319-462-3785



- LEGEND**
- OPC ORANGE PLASTIC CAP
 - () RECORDED AS
 - PER ORIGINAL
 - [] GOVERNMENT SURVEY FIELD NOTES

PAGE 2 of 2

PREVIOUSLY RECORDED IN N/A
 MONUMENT DESCRIPTION AND HOW ESTABLISHED SET 5/8" X 24" REBAR WITH ORANGE PLASTIC CAP #11310 AT PROPORTIONATE DISTANCE FOR 2640' (40 CHAINS FROM THE NE CORNER OF SECTION 6-T85N-R1W USING THE RATIO OF DISTANCE SHOWN ON THE ORIGINAL TOWNSHIP PLAT AND THE PRESENT MEASURED DISTANCE BETWEEN SAID NE CORNER AND THE NW CORNER OF SAID SECTION 6.

FIELD BOOK 344, PAGE 75. DATE OF SURVEY: 11/3/09



I hereby certify that this land surveying document and the related survey work was performed by me or under my direct personal supervision and that I am a duly registered Land Surveyor under the laws of the State of Iowa.
 Signed: *Clarence J. Walton* 5/19/10
 Clarence J. Walton, L.S.
 My Registration Renewal Date is December 31, 2011
 Iowa License Number 11310
 Pages or sheets covered by this seal: 2 of 2.

- A. THERE IS NO CERTIFICATE FOR THE CORNER ON FILE WITH THE RECORDER OF THE COUNTY IN WHICH THE CORNER IS LOCATED.
- B. THE CORNER MONUMENT HAS BEEN REPLACED OR MODIFIED.
- C. THE SURVEYOR IN RESPONSIBLE CHARGE OF THE LAND SURVEYING ACCEPTS A CORNER POSITION THAT DIFFERS FROM THAT SHOWN IN THE PUBLIC RECORDS OF THE COUNTY IN WHICH THE CORNER IS LOCATED.
- D. THE REFERENCE TIES REFERRED TO IN AN EXISTING PUBLIC RECORD NO LONGER EXIST.
- E. EXISTING CORNER TIES UPDATED.

CORNERS TO BE INDEXED

CORNER	SECTION	TOWNSHIP	RANGE
N 1/4 CORNER	6	85N	1W

JONES COUNTY ENGINEER'S OFFICE



19501 HWY. 64, ANAMOSA, IOWA 52205
 (319) 462-3785

COPY

Jones County
Marie Krutzfield, Recorder
Fee Book 2010 1020

04/23/2010 @0237PM
ZSC SEC COR CERT
Book: Page: # Pages: 2
Total Fees: \$0.00

PREPARED BY

CLARENCE J. WALTON, JONES COUNTY ENGINEER'S OFFICE, 19501 HWY. 64, ANAMOSA, IOWA, 52205 (319) 462-3785

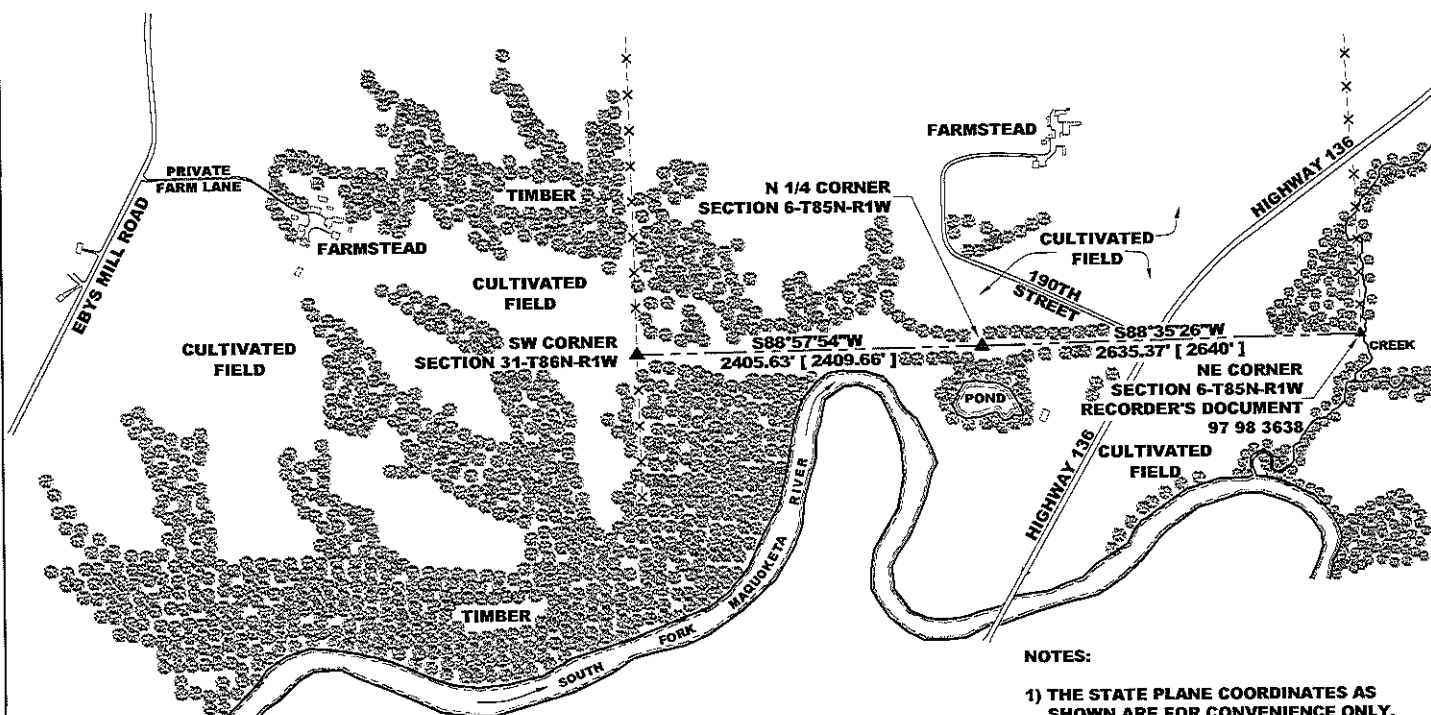
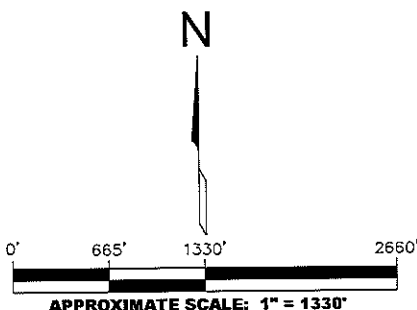
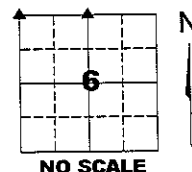
COVER SHEET
UNITED STATES PUBLIC LAND SURVEY CORNER CERTIFICATE
LAND SURVEY MONUMENTS SITUATED IN SECTION 6, TOWNSHIP 85 NORTH,
RANGE 1 WEST OF THE 5TH PRINCIPAL MERIDIAN, JONES COUNTY, IOWA.

NE CORNER SECTION 6-T85N-R1W
STATE PLANE COORDINATE
NAD 83 IOWA NORTH
N 3549019.94
E 5599706.14

N 1/4 CORNER SECTION 6-T85N-R1W
STATE PLANE COORDINATE
NAD 83 IOWA NORTH
N 3548955.12
E 5597071.57

NW CORNER SECTION 6-T85N-R1W
STATE PLANE COORDINATE
NAD 83 IOWA NORTH
N 3548911.66
E 5594666.33

SECTION TOWNSHIP RANGE
6 T85N R1W



NOTES:

- 1) THE STATE PLANE COORDINATES AS SHOWN ARE FOR CONVENIENCE ONLY. THE TIES AS SHOWN SHOULD BE USED TO REPLACE THE CORNER, IF DESTROYED.
- 2) COORDINATES AS SHOWN ARE GRID COORDINATES AND BASED ON JONES COUNTY G.P.S. CONTROL NETWORK WHICH IN TURN IS BASED ON NAD 83 IOWA NORTH DATUM.
- 3) BASIS OF BEARINGS ARE BASED ON JONES COUNTY G.P.S. CONTROL NETWORK.
- 4) ALL MEASUREMENTS ARE IN FEET AND DECIMALS THEREOF. DISTANCES ON THIS COVER SHEET ARE GRID DISTANCES.
- 5) APPROXIMATE SCALE IS GIVEN IN ORDER TO FACILITATE NAVIGATION TO CORNERS IN CASE GPS IS NOT USED.

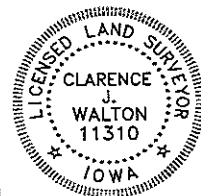
LEGEND

- HARDWOOD TIMBER
- FENCE LINE
- RECORDED AS
- PER ORIGINAL GOVERNMENT SURVEY FIELD NOTES

VICINITY MAP

PAGE 1 of 2

JONES COUNTY ENGINEER'S OFFICE



I hereby certify that this land surveying document and the related survey work was performed by me or under my direct personal supervision and that I am a duly registered Land Surveyor under the laws of the State of Iowa.
Signed: *Clarence J. Walton* 4/23/10
Clarence J. Walton, L.S.
My Registration Renewal Date is December 31, 2011
Iowa License Number 11310
Pages or sheets covered by this seal: 1 of 3.



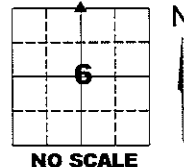
19501 HWY. 64, ANAMOSA, IOWA 52205
(319) 462-3785

UNITED STATES PUBLIC LAND SURVEY CORNER CERTIFICATE

LAND SURVEY MONUMENTS SITUATED IN SECTION 6, TOWNSHIP 85 NORTH,
 RANGE 1 WEST OF THE 5TH PRINCIPAL MERIDIAN, JONES COUNTY, IOWA.

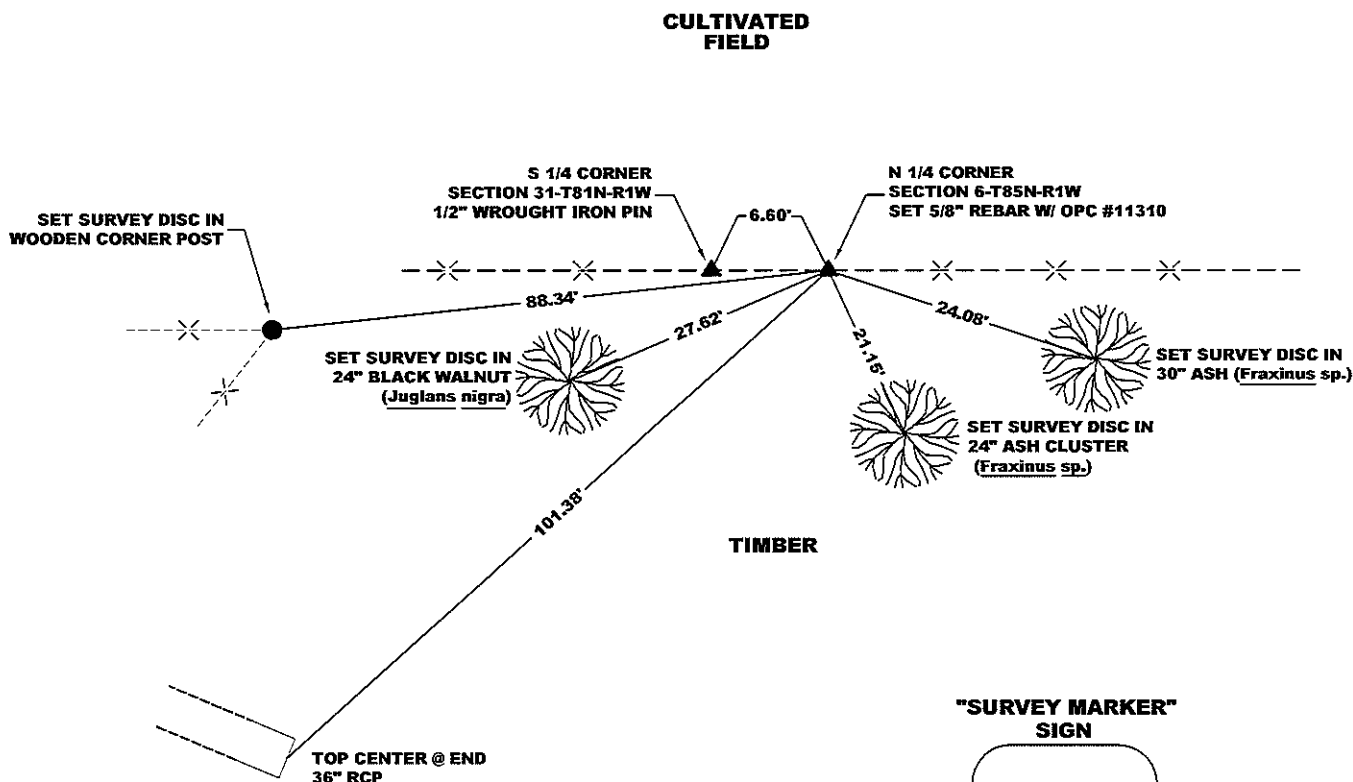
STATE PLANE COORDINATE
 NAD 83 IOWA NORTH
 N 3548955.12
 E 5597071.57

CORNER SECTION TOWNSHIP RANGE
 N 1/4 CORNER 6 T85N R1W



NOTES:

- 1) THE STATE PLANE COORDINATES AS SHOWN ARE FOR CONVENIENCE ONLY. THE TIES AS SHOWN SHOULD BE USED TO REPLACE THE CORNER, IF DESTROYED.
- 2) COORDINATES AS SHOWN ARE GRID COORDINATES AND BASED ON JONES COUNTY G.P.S. CONTROL NETWORK WHICH IN TURN IS BASED ON NAD 83 IOWA NORTH DATUM.
- 3) ALL MEASUREMENTS ARE IN FEET AND DECIMALS THEREOF.



"SURVEY MARKER" SIGN



SURVEY DISC



LEGEND

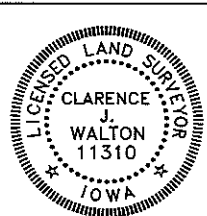
- OPC ORANGE PLASTIC CAP
- () RECORDED AS
- [] PER ORIGINAL GOVERNMENT SURVEY FIELD NOTES

PAGE 2 of 2

PREVIOUSLY RECORDED IN N/A

MONUMENT DESCRIPTION AND HOW ESTABLISHED SET 5/8" X 24" REBAR WITH ORANGE PLASTIC CAP #11310 AT PROPORTIONATE DISTANCE FOR 2640' (40 CHAINS FROM THE NE CORNER OF SECTION 6-T85N-R1W USING THE RATIO OF DISTANCE SHOWN ON THE ORIGINAL TOWNSHIP PLAT AND THE PRESENT MEASURED DISTANCE BETWEEN SAID NE CORNER AND THE NW CORNER OF SAID SECTION 6.

FIELD BOOK 344, PAGE 75. DATE OF SURVEY: 11/3/09



I hereby certify that this land surveying document and the related survey work was performed by me or under my direct personal supervision and that I am a duly registered Land Surveyor under the laws of the State of Iowa.
 Signed: *Clarence J. Walton* 4/23/10
 Clarence J. Walton, L.S.
 My Registration Renewal Date is December 31, 2011
 Iowa License Number 11310
 Pages or sheets covered by this seal: 2 of 3.

- A. THERE IS NO CERTIFICATE FOR THE CORNER ON FILE WITH THE RECORDER OF THE COUNTY IN WHICH THE CORNER IS LOCATED.
- B. THE CORNER MONUMENT HAS BEEN REPLACED OR MODIFIED.
- C. THE SURVEYOR IN RESPONSIBLE CHARGE OF THE LAND SURVEYING ACCEPTS A CORNER POSITION THAT DIFFERS FROM THAT SHOWN IN THE PUBLIC RECORDS OF THE COUNTY IN WHICH THE CORNER IS LOCATED.
- D. THE REFERENCE TIES REFERRED TO IN AN EXISTING PUBLIC RECORD NO LONGER EXIST.
- E. EXISTING CORNER TIES UPDATED.

CORNERS TO BE INDEXED

CORNER	SECTION	TOWNSHIP	RANGE
N 1/4 CORNER	6	85N	1W

JONES COUNTY ENGINEER'S OFFICE



19501 HWY. 64, ANAMOSA, IOWA 52205
 (319) 462-3785

Jones County
 Marie Krutzfield, Recorder
Fee Book 2010 1021

04/26/2010 @0903AM
 ZSC SEC COR CERT
 Book: Page: # Pages: 3
 Total Fees: \$0.00

Copy

PREPARED BY
CLARENCE J. WALTON, JONES COUNTY ENGINEER'S OFFICE, 19501 HWY. 64, ANAMOSA, IOWA, 52205 (319) 462-3785

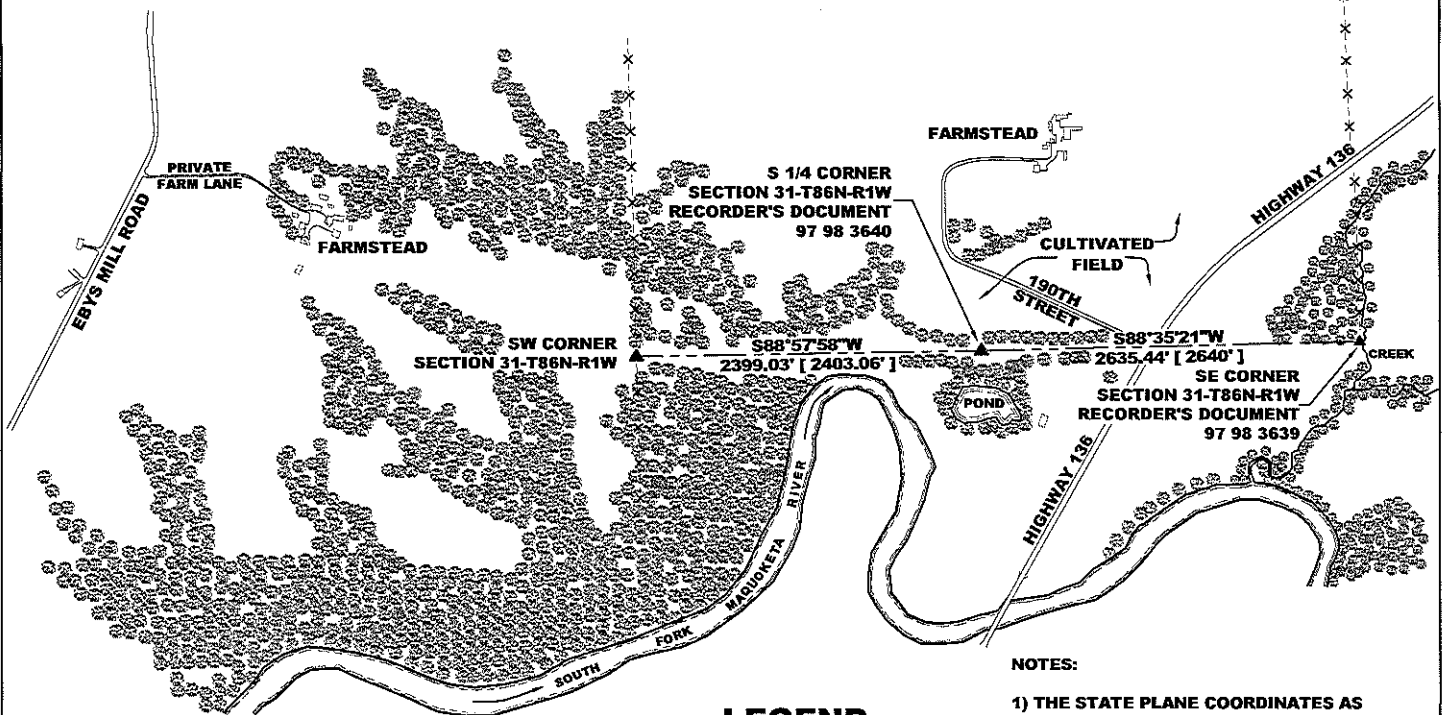
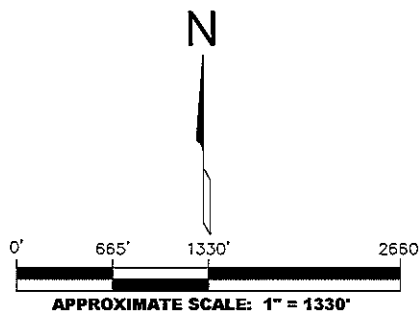
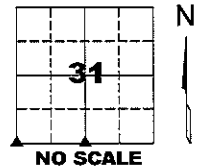
COVER SHEET
UNITED STATES PUBLIC LAND SURVEY CORNER CERTIFICATE
LAND SURVEY MONUMENTS SITUATED IN SECTION 31, TOWNSHIP 86 NORTH,
RANGE 1 WEST OF THE 5TH PRINCIPAL MERIDIAN, JONES COUNTY, IOWA.

SW CORNER SECTION 31-T86N-R1W
 STATE PLANE COORDINATE
 NAD 83 IOWA NORTH
 N 3548911.66
 E 5594666.33

S 1/4 CORNER SECTION 31-T86N-R1W
 STATE PLANE COORDINATE
 NAD 83 IOWA NORTH
 N 3548954.96
 E 5597064.97

SE CORNER SECTION 31-T86N-R1W
 STATE PLANE COORDINATE
 NAD 83 IOWA NORTH
 N 3549019.84
 E 5599699.61

SECTION TOWNSHIP RANGE
 31 T86N R1W



NOTES:

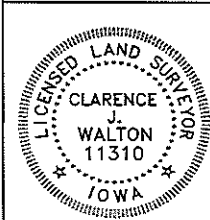
- 1) THE STATE PLANE COORDINATES AS SHOWN ARE FOR CONVENIENCE ONLY. THE TIES AS SHOWN SHOULD BE USED TO REPLACE THE CORNER, IF DESTROYED.
- 2) COORDINATES AS SHOWN ARE GRID COORDINATES AND BASED ON JONES COUNTY G.P.S. CONTROL NETWORK WHICH IN TURN IS BASED ON NAD 83 IOWA NORTH DATUM.
- 3) BASIS OF BEARINGS ARE BASED ON JONES COUNTY G.P.S. CONTROL NETWORK.
- 4) ALL MEASUREMENTS ARE IN FEET AND DECIMALS THEREOF. DISTANCES ON THIS COVER SHEET ARE GRID DISTANCES.
- 5) APPROXIMATE SCALE IS GIVEN IN ORDER TO FACILITATE NAVIGATION TO CORNERS IN CASE GPS IS NOT USED.

LEGEND

- HARDWOOD TIMBER
- FENCE LINE
- RECORDED AS PER GOV FIELD

VICINITY MAP

PAGE 1 of 3



I hereby certify that this land surveying document and the related survey work was performed by me or under my direct personal supervision and that I am a duly registered Land Surveyor under the laws of the State of Iowa.
 Signed: *Clarence J. Walton* 4/26/10
 Clarence J. Walton, L.S.
 My Registration Renewal Date is December 31, 2011
 Iowa License Number 11310
 Pages or sheets covered by this seal: 1 of 1.

JONES COUNTY ENGINEER'S OFFICE



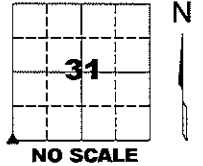
19501 HWY. 64, ANAMOSA, IOWA 52205
 (319) 462-3785

UNITED STATES PUBLIC LAND SURVEY CORNER CERTIFICATE

**LAND SURVEY MONUMENTS SITUATED IN SECTION 31, TOWNSHIP 86 NORTH,
 RANGE 1 WEST OF THE 5TH PRINCIPAL MERIDIAN, JONES COUNTY, IOWA.**

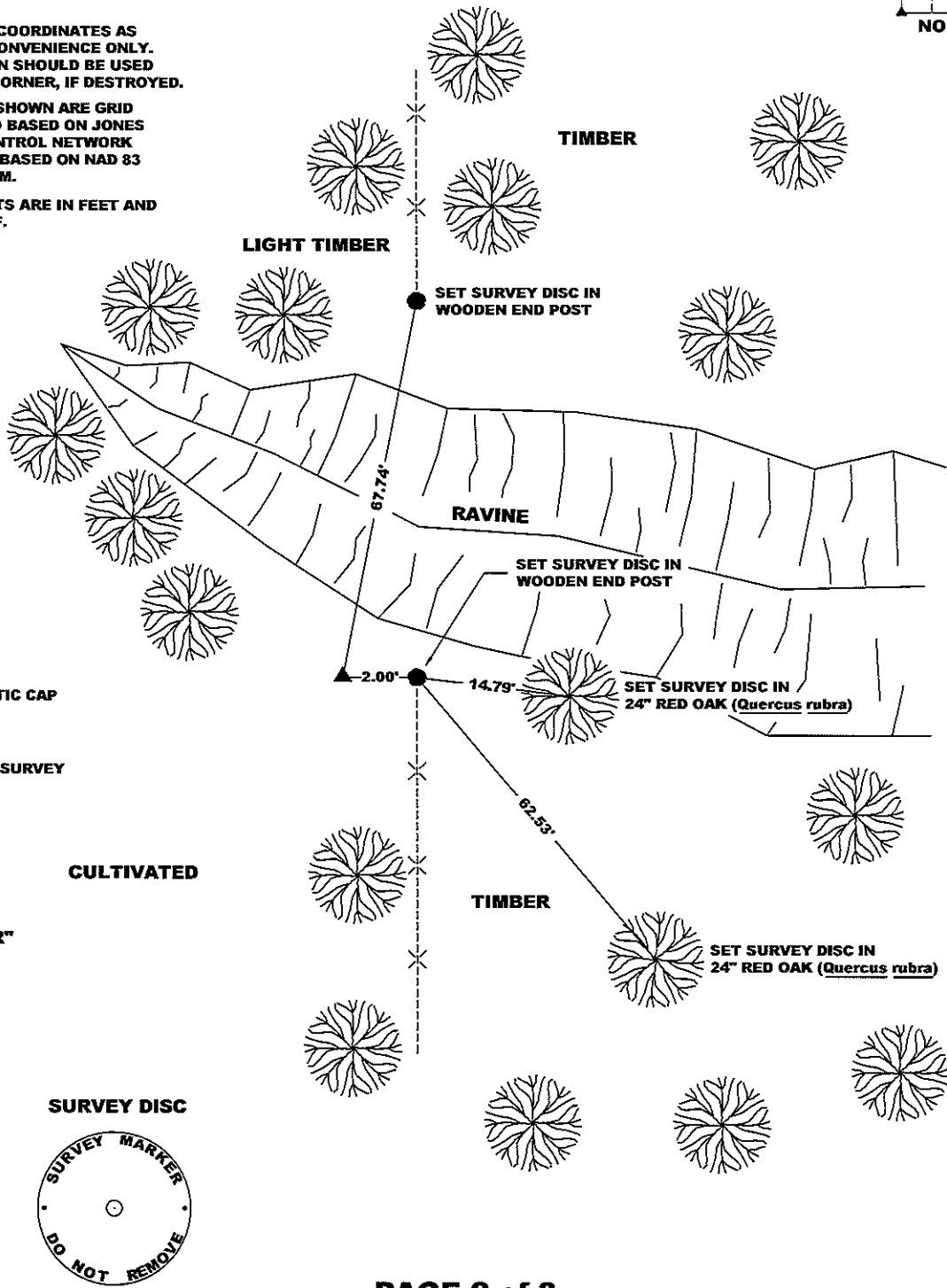
STATE PLANE COORDINATE
 NAD 83 IOWA NORTH
 N 3548911.66
 E 5594666.33

CORNER SECTION TOWNSHIP RANGE
 SW CORNER 31 T86N R1W



NOTES:

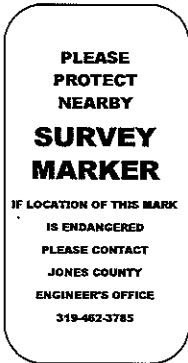
- 1) THE STATE PLANE COORDINATES AS SHOWN ARE FOR CONVENIENCE ONLY. THE TIES AS SHOWN SHOULD BE USED TO REPLACE THE CORNER, IF DESTROYED.
- 2) COORDINATES AS SHOWN ARE GRID COORDINATES AND BASED ON JONES COUNTY G.P.S. CONTROL NETWORK WHICH IN TURN IS BASED ON NAD 83 IOWA NORTH DATUM.
- 3) ALL MEASUREMENTS ARE IN FEET AND DECIMALS THEREOF.



LEGEND

- OPC ORANGE PLASTIC CAP
- () RECORDED AS
- PER ORIGINAL GOVERNMENT SURVEY
- [] FIELD NOTES

"SURVEY MARKER" SIGN



SURVEY DISC



PAGE 2 of 3

PREVIOUSLY RECORDED IN N/A
MONUMENT DESCRIPTION AND HOW ESTABLISHED FOUND BROKEN PIECES OF 8" X 12" X 29" LIMESTONE ON TOP OF 1/2" X 36" WROUGHT IRON PIN (PER JONES COUNTY ENGINEERING TIES FROM 1939) 4" BELOW EXISTING SURFACE. LOWERED WROUGHT IRON PIN AND STONE PIECES AS THIS AREA IS ERODING INTO AN ADJACENT RAVINE. SET 5/8" X 48" REBAR WITH SMALL MAGNET ON NORTH SIDE OF STONE FOR DETECTION PURPOSE. ALSO SET 2 STEEL FENCE POSTS WITH YELLOW "SURVEY MARKER" SIGNS (1 FACING WEST AND 1 FACING EAST) AS WITNESS TO CORNER AND TO HOLD STONES IN PLACE.
 FIELD BOOK 344, PAGE 75. DATE OF SURVEY: 11/3/09



I hereby certify that this land surveying document and the related survey work was performed by me or under my direct personal supervision and that I am a duly registered Land Surveyor under the laws of the State of Iowa.
 Signed: *Clarence J. Walton* 4/26/10
 Clarence J. Walton, L.S.
 My Registration Renewal Date is December 31, 2011
 Iowa License Number 11310
 Pages or sheets covered by this seal: 1 of 1.

- A. THERE IS NO CERTIFICATE FOR THE CORNER ON FILE WITH THE RECORDER OF THE COUNTY IN WHICH THE CORNER IS LOCATED.
- B. THE CORNER MONUMENT HAS BEEN REPLACED OR MODIFIED.
- C. THE SURVEYOR IN RESPONSIBLE CHARGE OF THE LAND SURVEYING ACCEPTS A CORNER POSITION THAT DIFFERS FROM THAT SHOWN IN THE PUBLIC RECORDS OF THE COUNTY IN WHICH THE CORNER IS LOCATED.
- D. THE REFERENCE TIES REFERRED TO IN AN EXISTING PUBLIC RECORD NO LONGER EXIST.
- E. EXISTING CORNER TIES UPDATED.

CORNERS TO BE INDEXED			
CORNER	SECTION	TOWNSHIP	RANGE
SW CORNER	31	86N	1W
NW CORNER	6	85N	1W
NE CORNER	1	85N	2W
SE CORNER	36	86N	2W

JONES COUNTY ENGINEER'S OFFICE

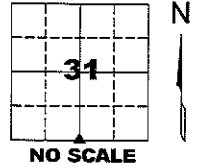
19501 HWY. 64, ANAMOSA, IOWA 52205
 (319) 462-3785

UNITED STATES PUBLIC LAND SURVEY CORNER CERTIFICATE

LAND SURVEY MONUMENTS SITUATED IN SECTION 31, TOWNSHIP 86 NORTH,
 RANGE 1 WEST OF THE 5TH PRINCIPAL MERIDIAN, JONES COUNTY, IOWA.

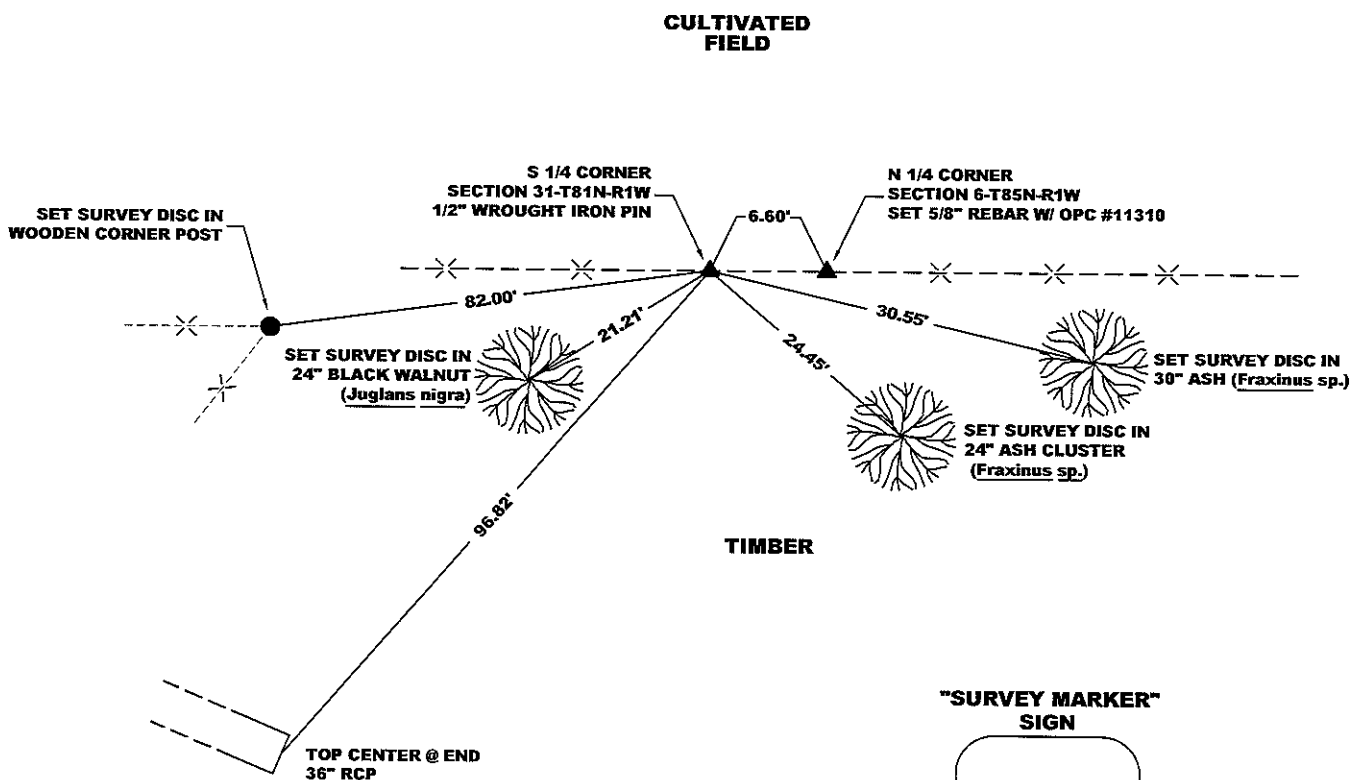
STATE PLANE COORDINATE
 NAD 83 IOWA NORTH
 N 3548954.96
 E 5597064.97

CORNER SECTION TOWNSHIP RANGE
 S 1/4 CORNER 31 T86N R1W



NOTES:

- 1) THE STATE PLANE COORDINATES AS SHOWN ARE FOR CONVENIENCE ONLY. THE TIES AS SHOWN SHOULD BE USED TO REPLACE THE CORNER, IF DESTROYED.
- 2) COORDINATES AS SHOWN ARE GRID COORDINATES AND BASED ON JONES COUNTY G.P.S. CONTROL NETWORK WHICH IN TURN IS BASED ON NAD 83 IOWA NORTH DATUM.
- 3) ALL MEASUREMENTS ARE IN FEET AND DECIMALS THEREOF.



- LEGEND**
- OPC ORANGE PLASTIC CAP
 - () RECORDED AS
 - PER ORIGINAL
 - [] GOVERNMENT SURVEY FIELD NOTES

"SURVEY MARKER" SIGN

PLEASE PROTECT NEARBY

SURVEY MARKER

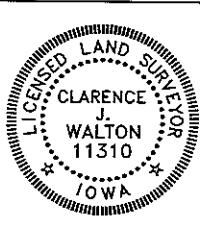
IF LOCATION OF THIS MARK IS ENDANGERED PLEASE CONTACT JONES COUNTY ENGINEER'S OFFICE 319-462-3785



PAGE 3 of 3

PREVIOUSLY RECORDED IN RECORDER'S DOCUMENT 97 98 3640
 MONUMENT DESCRIPTION AND HOW ESTABLISHED FOUND 1/2" WROUGHT IRON PIN 2" BELOW PRESENT GROUND SURFACE IN OLD DOWN FENCE LINE WITH BENT ANGLE IRON NEXT TO PIN. SET STEEL FENCE POST WITH "SURVEY MARKER" SIGN ON SOUTH SIDE OF PIN AS A WITNESS TO THIS CORNER.

FIELD BOOK 344, PAGE 75. DATE OF SURVEY: 11/3/09



I hereby certify that this land surveying document and the related survey work was performed by me or under my direct personal supervision and that I am a duly registered Land Surveyor under the laws of the State of Iowa.
 Signed: *Clarence J. Walton* 4/26/10
 Clarence J. Walton, L.S.
 My Registration Renewal Date is December 31, 2011
 Iowa License Number 11310
 Pages or sheets covered by this seal: 1 of 1.

- A. THERE IS NO CERTIFICATE FOR THE CORNER ON FILE WITH THE RECORDER OF THE COUNTY IN WHICH THE CORNER IS LOCATED.
- B. THE CORNER MONUMENT HAS BEEN REPLACED OR MODIFIED.
- C. THE SURVEYOR IN RESPONSIBLE CHARGE OF THE LAND SURVEYING ACCEPTS A CORNER POSITION THAT DIFFERS FROM THAT SHOWN IN THE PUBLIC RECORDS OF THE COUNTY IN WHICH THE CORNER IS LOCATED.
- D. THE REFERENCE TIES REFERRED TO IN AN EXISTING PUBLIC RECORD NO LONGER EXIST.
- E. EXISTING CORNER TIES UPDATED.

CORNERS TO BE INDEXED

CORNER	SECTION	TOWNSHIP	RANGE
S 1/4 CORNER	31	86N	1W

JONES COUNTY ENGINEER'S OFFICE

19501 HWY. 64, ANAMOSA, IOWA 52205
 (319) 462-3785

97 98 3640

FILED
RECORDERS OFFICE
JONES COUNTY IOWA

98 MAY -8 AM 10:40

LINDA J. BENDIXEN
RECORDER

IHW ENGINEERS & SURVEYORS, P.C., 4155 PENNSYLVANIA AVE., DUBUQUE, IOWA, (319) 556-2464

UNITED STATES PUBLIC LAND SURVEY CORNER CERTIFICATE OF

LAND SURVEY MONUMENTS SITUATED IN SECTION 31, TOWNSHIP 86 NORTH, RANGE 1 WEST
OF THE FIFTH PRINCIPAL MERIDIAN, JONES COUNTY, IOWA.
PREVIOUSLY RECORDED IN _____ IN COUNTY RECORDER'S OFFICE.

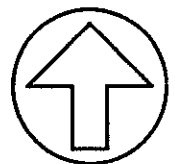
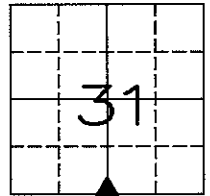
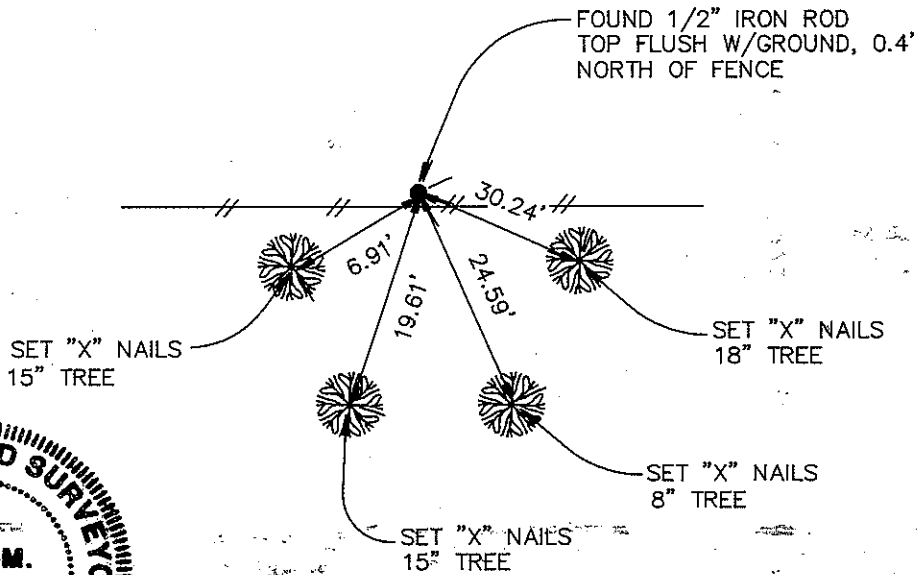
(Show reason for preparing this certificate, the evidence and detailed procedures used in establishing the corner positions and monumentation found or placed.)

Monument Description and Remarks:

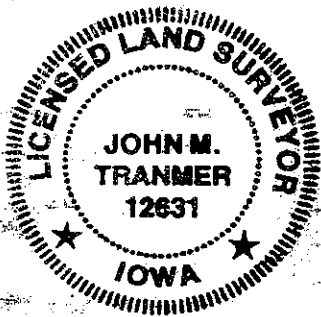
SOUTH QUARTER CORNER, SECTION 31, T86N, R1W - FOUND 1/2" IRON ROD, TOP FLUSH
W/GROUND, 0.4' NORTH OF FENCE.

PLAN - VIEW

(Show a minimum of three reference ties to durable physical objects, relevant monuments and physical conditions that will enable recovery of the corner.)



NO SCALE



I HEREBY CERTIFY THAT THE SURVEY WORK WAS COMPLETED AND THIS CERTIFICATE WAS PREPARED BY ME OR UNDER MY DIRECT PERSONAL SUPERVISION AND THAT I AM A DULY REGISTERED LAND SURVEYOR UNDER THE LAWS OF THE STATE OF IOWA.

John M. Tranmer
JOHN M. TRANMER REG. NO. 12631

DATE: 5-7-98
MY REGISTRATION EXPIRES DECEMBER 31, 1996

LIST CORNERS TO BE INDEXED

CORNERS	SECTION	TWP	RANGE
S 1/4 COR.	31	T86N	R1W



ENGINEERS AND
SURVEYORS P.C.

Iowa, Illinois, Wisconsin
4155 Pennsylvania Ave. Dubuque, Ia. 52002 (319) 556-2464
Guttenberg, IA
Galena, IL
Cuba City, WI

MONUMENT RECORD

COUNTY: JONES
TOWNSHIP: WASHINGTON

DATE: 5-5-98
REVISED:

FIELD BOOK NO. 362

PROJ. NO. 98730

INDEX NO.