

97 98 3638

FILED
RECORDERS OFFICE
JONES COUNTY IOWA

98 MAY -8 AM 10:40

LINDA J. DENNIXEN
RECORDER

IIV ENGINEERS & SURVEYORS, P.C., 4155 PENNSYLVANIA AVE., DUBUQUE, IOWA, (319) 556-2464

UNITED STATES PUBLIC LAND SURVEY CORNER CERTIFICATE OF

LAND SURVEY MONUMENTS SITUATED IN SECTION 6, TOWNSHIP 85 NORTH, RANGE 1 WEST
OF THE FIFTH PRINCIPAL MERIDIAN, JONES COUNTY, IOWA.
PREVIOUSLY RECORDED IN _____ IN COUNTY RECORDER'S OFFICE.

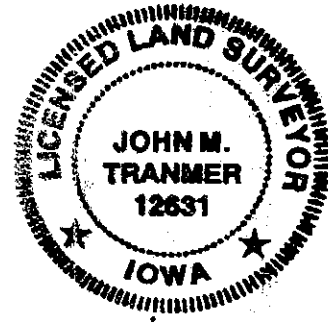
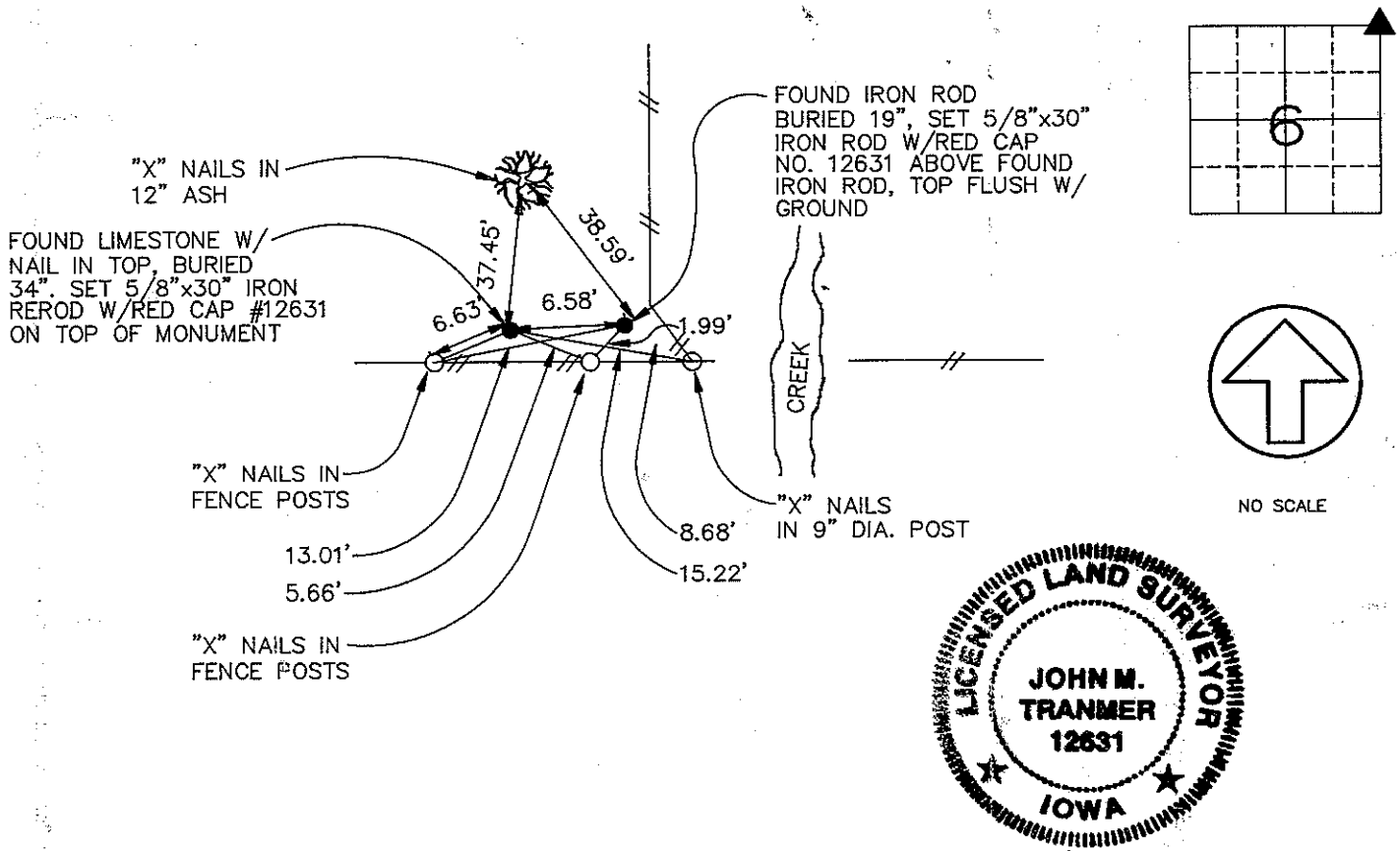
(Show reason for preparing this certificate, the evidence and detailed procedures used in establishing the corner positions and monumentation found or placed.)

Monument Description and Remarks: _____

NORTHEAST CORNER, SECTION 6, T85N, R1W - FOUND IRON ROD BURIED 19". SET 5/8"x30" IRON REROD
ABOVE FOUND IRON ROD, TOP FLUSH W/GROUND.

PLAN - VIEW

(Show a minimum of three reference ties to durable physical objects, relevant monuments and physical conditions that will enable recovery of the corner.)



I HEREBY CERTIFY THAT THE SURVEY WORK WAS COMPLETED AND THIS CERTIFICATE WAS PREPARED BY ME OR UNDER MY DIRECT PERSONAL SUPERVISION AND THAT I AM A DULY REGISTERED LAND SURVEYOR UNDER THE LAWS OF THE STATE OF IOWA.

John M. Tranmer
JOHN M. TRANMER REG. NO. 12631

DATE: 5-7-98
MY REGISTRATION EXPIRES DECEMBER 31, 1996

LIST CORNERS TO BE INDEXED

CORNERS	SECTION	TWP	RANGE
N.E. COR.	6	T85N	R1W



**ENGINEERS AND
SURVEYORS P.C.**

Iowa, Illinois, Wisconsin 4155 Pennsylvania Ave. Guttenberg, IA
Dubuque, Ia. 52002 Calena, IL
(319) 556-2464 Cuba City, WI

MONUMENT RECORD

COUNTY: JONES
TOWNSHIP: CLAY

DATE: 5-5-98
REVISED:

FIELD BOOK NO. 362

PROJ. NO. 98730

INDEX NO.

97 98 3639

FILED
RECORDERS OFFICE
JONES COUNTY, IOWA

98 MAY -8 AM 10:40

LINDA J. BENDIXEN

RECORDED

IIV ENGINEERS & SURVEYORS, P.C., 4155 PENNSYLVANIA AVE., DUBUQUE, IOWA, (515) 556-2464

UNITED STATES PUBLIC LAND SURVEY CORNER CERTIFICATE OF

LAND SURVEY MONUMENTS SITUATED IN SECTION 31, TOWNSHIP 86 NORTH, RANGE 1 WEST
OF THE FIFTH PRINCIPAL MERIDIAN, JONES COUNTY, IOWA.
PREVIOUSLY RECORDED IN _____ IN COUNTY RECORDER'S OFFICE.

(Show reason for preparing this certificate, the evidence and detailed procedures used in establishing the corner positions and monumentation found or placed.)

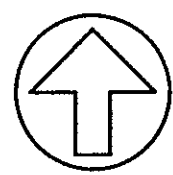
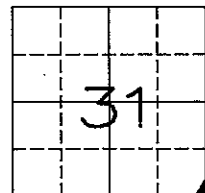
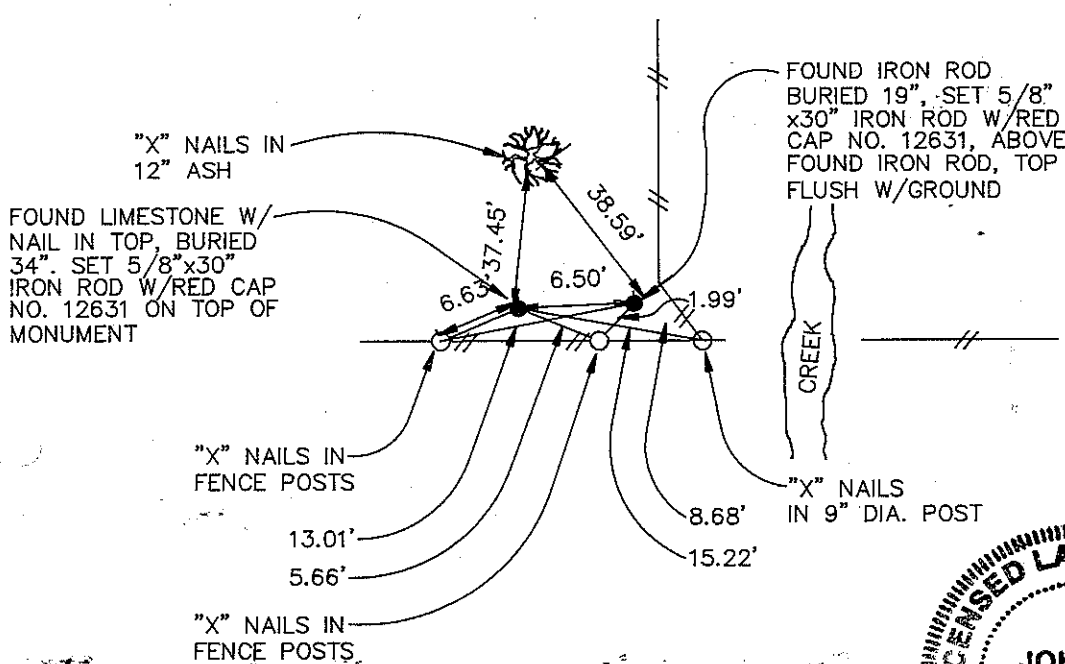
Monument Description and Remarks:

SOUTHEAST CORNER, SECTION 31, T86N, R1W - FOUND LIMESTONE W/NAIL IN TOP BURIED 34"

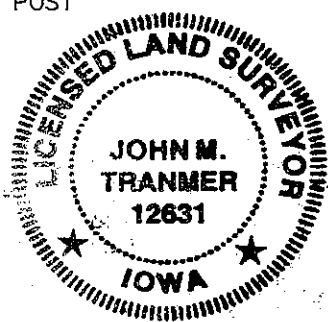
SET 5/8" x30" IRON ROD W/RED CAP #12631 ON TOP OF MONUMENT, 2.3' NORTH OF E-W FENCE AND
8' WEST OF N-S FENCE

PLAN - VIEW

(Show a minimum of three reference ties to durable physical objects, relevant monuments and physical conditions that will enable recovery of the corner.)



NO SCALE



I HEREBY CERTIFY THAT THE SURVEY WORK WAS COMPLETED AND THIS CERTIFICATE WAS PREPARED BY ME OR UNDER MY DIRECT PERSONAL SUPERVISION AND THAT I AM A DULY REGISTERED LAND SURVEYOR UNDER THE LAWS OF THE STATE OF IOWA.

John M. Tranmer
JOHN M. TRANMER REG. NO. 12631

DATE: 5-7-98
MY REGISTRATION EXPIRES DECEMBER 31, 1996

LIST CORNERS TO BE INDEXED

CORNERS	SECTION	TWP	RANGE
S.E. COR	31	T86N	R1W

IIV ENGINEERS AND SURVEYORS P.C.
Iowa, Illinois, Wisconsin
4155 Pennsylvania Ave. Dubuque, Ia. 52002 (319) 556-2464
Guttenberg, IA Galena, IL Cuba City, WI

MONUMENT RECORD
COUNTY: JONES
TOWNSHIP: WASHINGTON

DATE: 5-5-98	FIELD BOOK NO. 362	PROJ. NO. 98730	INDEX NO.
--------------	--------------------	-----------------	-----------