

Marie Krutzfield, Recorder
 Jones County, Iowa

COPY

PREPARED BY: MATTHEW W. KRAUSE, MARTIN & WHITACRE SURVEYORS & ENGINEERS,
 P.O. BOX 413, MUSCATINE, IOWA 52761 / PHONE: 563-263-7641

UNITED STATES PUBLIC LAND SURVEY CORNER CERTIFICATE OF

Land Survey Monuments situated in Section 8, Township T85N, Range RIW, of the Fifth Principal Meridian, JONES County, Iowa.

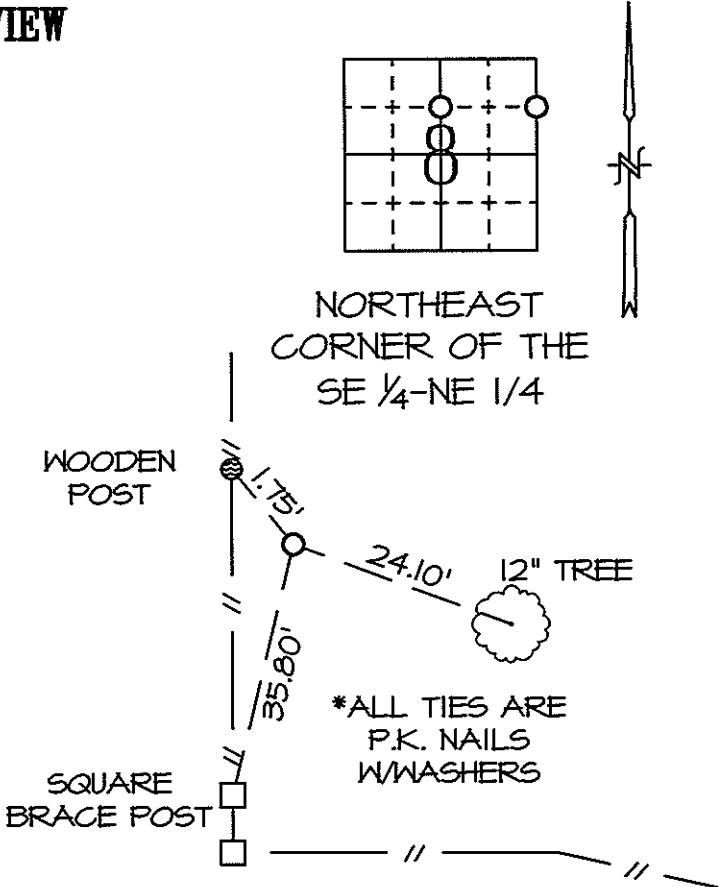
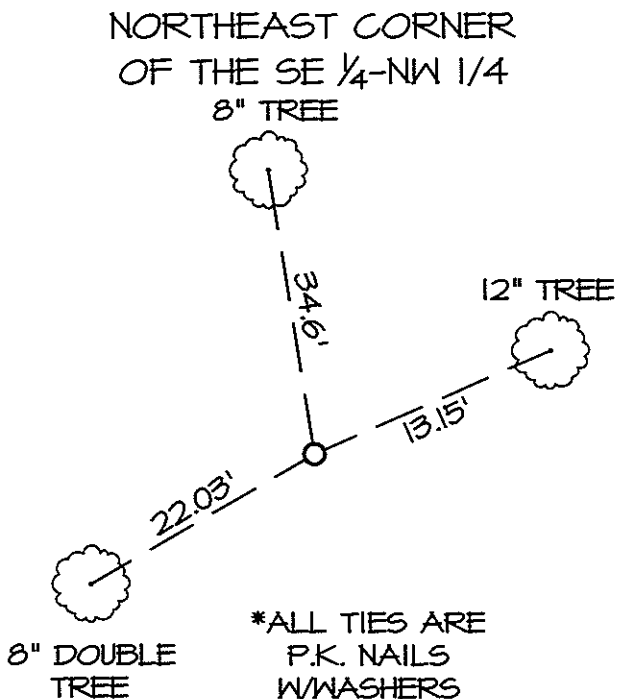
Reason for preparing certificate: -No Certificate on File -Monument Type Replaced/Differs
 -Existing Ties Inaccurate -Differing Position Accepted

Previously recorded in N/A in County Recorder's Office.

Monument Description and Remarks: NORTHEAST CORNER OF THE SE 1/4-NW 1/4 - SET 1/2" REBAR W/ORANGE CAP #15981 APPROXIMATE 0.3'± ABOVE GROUND AT MIDPOINT AND ON LINE BETWEEN THE N 1/4 CORNER AND THE CENTER, SET NRCS SIGN 0.3'± SOUTH OF REBAR.

NORTHEAST CORNER OF THE SE 1/4-NE 1/4 - SET 1/2" REBAR W/ORANGE CAP #15981 APPROXIMATE 0.3'± ABOVE GROUND, 1.0'± EAST OF N-S FENCE, AT THE INTERSECTION OF ANCIENT FENCES OF OCCUPATION.

PLAN-VIEW



Drawn By: CCS Date: 01/06/10 M&W: Book JONES Page 75 Job No. 7183.09

I hereby certify that the survey work was completed and this certificate was prepared by me or under my direct personal supervision and that I am a duly licensed land surveyor under the laws of the state of Iowa.

Signature: Matthew W. Krause

Date: JAN 8, 2010 License No. LS15981
 My License Expires 12/31/2011.



List Corners to be Indexed			
Corners	Section	Twp	Range
NE SE 1/4-NW 1/4	8	T85N	RIW
NE SE 1/4-NE 1/4	8	T85N	RIW