

COPY

PREPARED BY: MATTHEW W. KRAUSE, MARTIN & WHITACRE SURVEYORS & ENGINEERS,
P.O. BOX 413, MUSCATINE, IOWA 52761 / PHONE: 563-263-7691

UNITED STATES PUBLIC LAND SURVEY CORNER CERTIFICATE OF

Land Survey Monuments situated in Section 8, Township T85N, Range RIW, of the Fifth Principal Meridian, JONES County, Iowa.

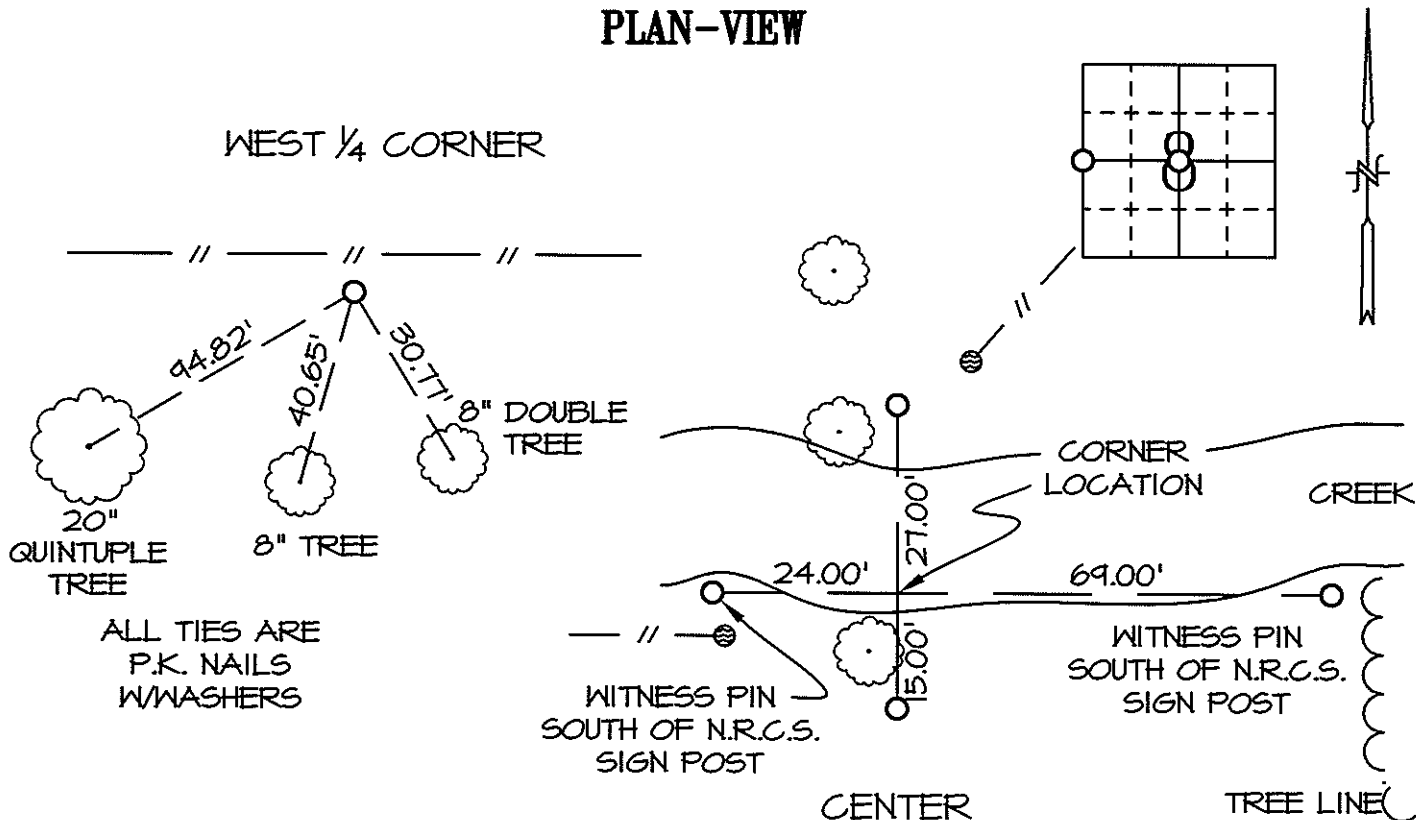
Reason for preparing certificate: -No Certificate on File -Monument Type Replaced/Differs
 -Existing Ties Inaccurate -Differing Position Accepted

Previously recorded in WEST 1/4 CORNER - FILE #2161 BOOK 299 PAGE 327 in County Recorder's Office.

Monument Description and Remarks: WEST 1/4 CORNER - SET 1/2" REBAR W/ORANGE CAP #15981 0.10' DEEP, 1.0' SOUTH OF EAST-WEST FENCE, 2.0'± NORTH OF ACCESS TRAIL EDGE AT LOCATION SHOWN ON SURVEY BY CLARENCE J. WALTON BOOK 400 PAGE 84.

CENTER - LIES IN CREEK, SET 1/2" REBAR W/ORANGE CAP #15981 AS WITNESS PINS TO NORTH, SOUTH, EAST, AND WEST ON THE SECTION LINES, CORNER COMPUTED AT THE INTERSECTION OF THE 1/4 SECTION LINES.

PLAN-VIEW



Drawn By: CCS

Date: 01/06/10

M&W: Book JONES Page 76

Job No. 7183.09

I hereby certify that the survey work was completed and this certificate was prepared by me or under my direct personal supervision and that I am a duly licensed land surveyor under the laws of the state of Iowa.

Signature: Matthew W. Krause

Date: JAN 8, 2010 License No. LS15981
My License Expires 12/31/2011.



List Corners to be Indexed

Corners	Section	Twp	Range
W ¹ / ₄	8	T85N	RIW
CENTER	8	T85N	RIW