

COPY

FEE BOOK: 2010 0154 1/15/2010 12:05 PM

REC FEES: \$9.00

PAGES: 1

Marie Krutzfield, Recorder  
Jones County, Iowa

PREPARED BY: MATTHEW W. KRAUSE, MARTIN & WHITACRE SURVEYORS & ENGINEERS,  
P.O. BOX 413, MUSCATINE, IOWA 52761 / PHONE: 563-263-7691

### UNITED STATES PUBLIC LAND SURVEY CORNER CERTIFICATE OF

Land Survey Monuments situated in Section 8, Township T85N, Range RIW, of the Fifth Principal Meridian, JONES County, Iowa.

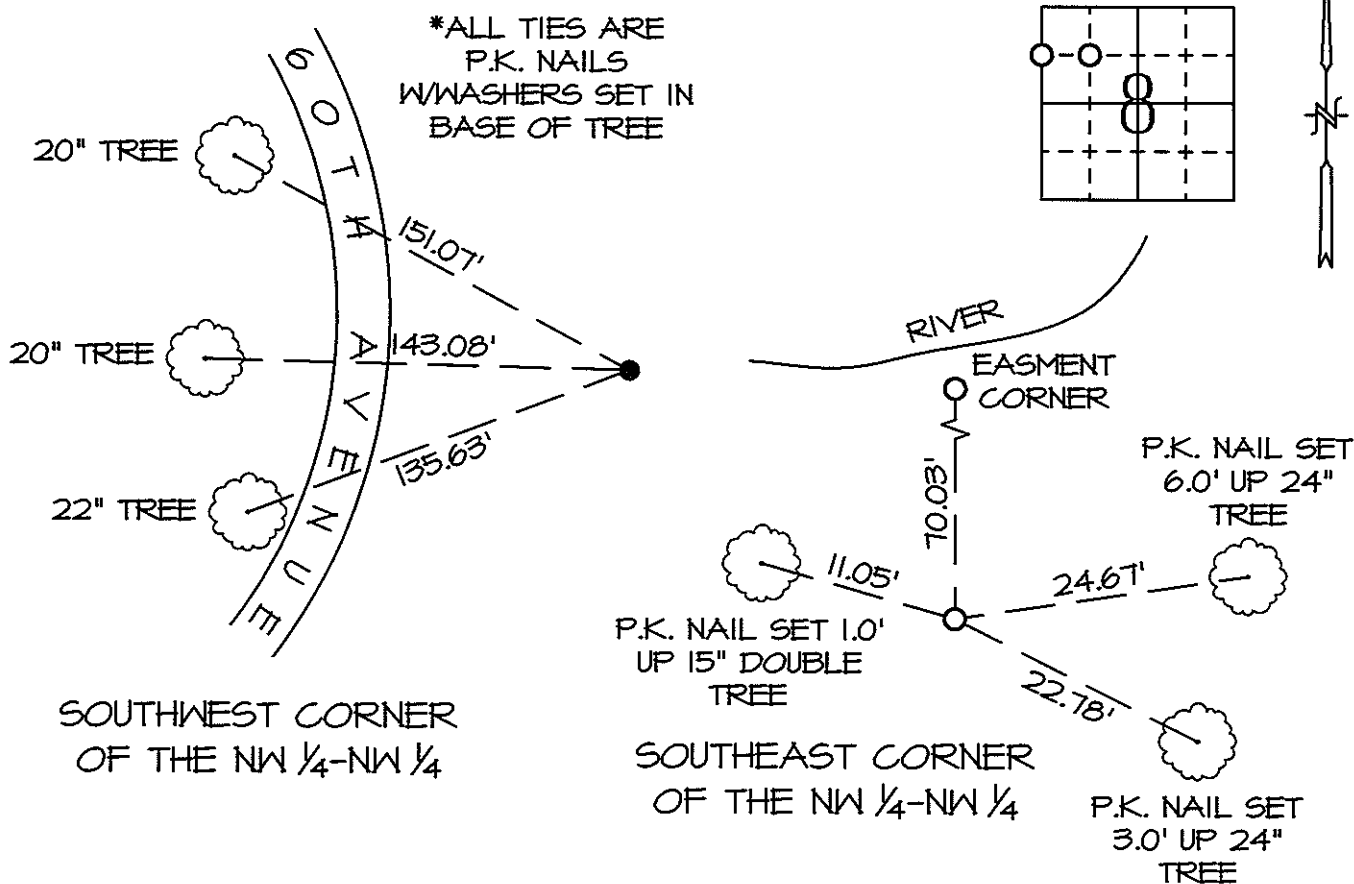
Reason for preparing certificate:  -No Certificate on File  -Monument Type Replaced/Differs  
 -Existing Ties Inaccurate  -Differing Position Accepted

Previously recorded in N/A in County Recorder's Office.

Monument Description and Remarks: SOUTHEAST CORNER OF THE NW 1/4-NW 1/4 - SET 1/2" REBAR APPROXIMATE 0.3'± ABOVE GROUND AT THE MIDPOINT AND ONLINE BETWEEN THE SOUTHWEST CORNER OF THE NW 1/4-NW 1/4 AND THE SOUTHEAST CORNER OF THE NE 1/4-NW 1/4, SET NRCS SIGN 0.3'± WEST OF REBAR.

SOUTHWEST CORNER OF THE NW 1/4-NW 1/4 - FOUND 1/2" REBAR W/CAP #11310 APPROXIMATE 0.7' DEEP IN FIELD AS SHOWN ON SURVEY BY CLARENCE WALTON, BOOK 400 PAGE 84, SET NRCS SIGN 0.3'± EAST OF REBAR.

#### PLAN-VIEW

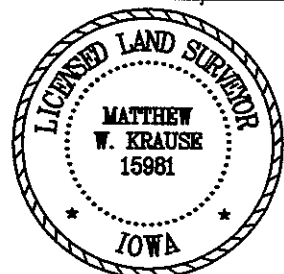


Drawn By: HL Date: 01/06/10 M&W: Book JONES Page 74 Job No. 7183.09

I hereby certify that the survey work was completed and this certificate was prepared by me or under my direct personal supervision and that I am a duly licensed land surveyor under the laws of the state of Iowa.

Signature: Matthew W. Krause

Date: JAN 9, 2010 License No. LS15981  
My License Expires 12/31/2011



#### List Corners to be Indexed

Corners	Section	Twp	Range
SE NW $\frac{1}{4}$ -NW $\frac{1}{4}$	8	T85N	RIW
SW NW $\frac{1}{4}$ -NW $\frac{1}{4}$	8	T85N	RIW