

Fairview

RECEIVED  
MAR 22 1996  
JONES COUNTY ENGINEER

Wm. Burger Land Surveyors 510 3rd St. West Court Worthington, Iowa Phone 319 855 2028  
SLSI 9-90

UNITED STATES PUBLIC LAND SURVEY CORNER CERTIFICATE

OF

Land Survey Monuments situated in Section 10, Township 84 NORTH, Range 4 WEST, of the Fifth Principal Meridian, JONES County, Iowa.  
Previously recorded in DOES NOT APPLY in County Recorder's Office.

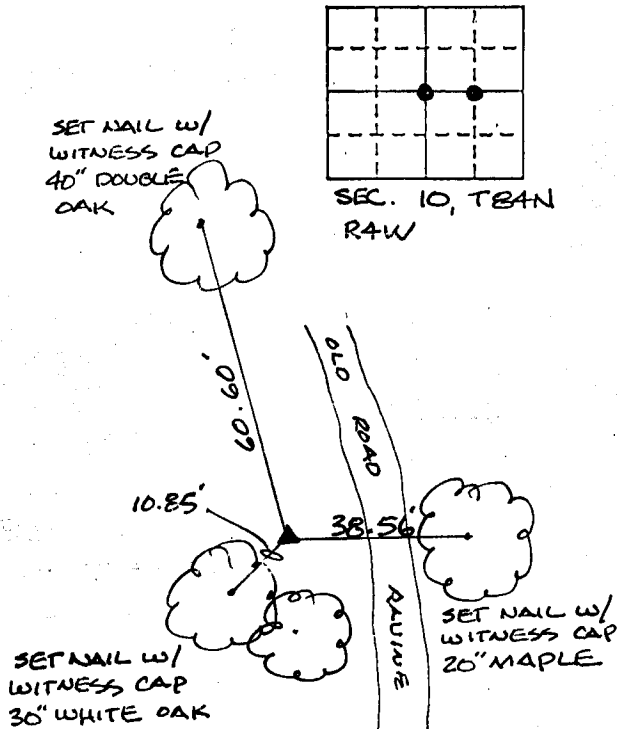
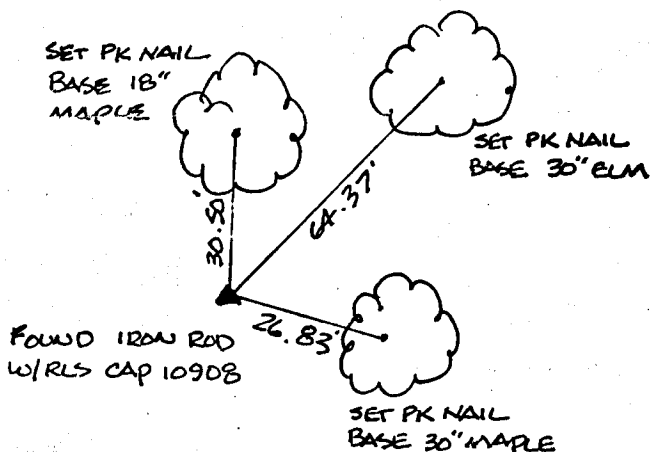
(Show reason for preparing this certificate, the evidence and detailed procedures used in establishing the corner positions and monumentation found or placed.)

Monument Description and Remarks: CORNER CERTIFICATE NOT FOUND @ COUNTY RECORDERS OFFICE.

NW CORNER NE 1/4, SE 1/4 - SET 1/2" IRON ROD W/ RLS CAP # 12642 ON LINE & MIDWAY BETWEEN THE CENTER OF SECTION & THE EAST QUARTER CORNER.  
CENTER OF SECTION - FOUND IRON ROD W/ RLS CAP # 10908

PLAN - VIEW

(Show a minimum of three reference ties to durable physical objects, relevant monuments and physical conditions that will enable recovery of the corner.)



Handwritten note: NW land 5-20-96

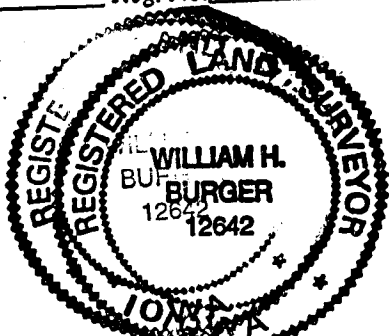
CENTER OF SECTION 10  
ON word 5-20-96

NW CORNER NE 1/4, SE 1/4

I hereby certify that the survey work was completed and this certificate was prepared by me or under my direct personal supervision and that I am a duly registered land surveyor under the laws of the state of Iowa.

Signature: William H. Burger  
Name typed or printed: WILLIAM H. BURGER

Date: 3/19/96 Reg. No. 12642



SEAL

Corners	List Corners to be Indexed Section	Twp	Range
CENTER	10	84N	4W
NW, NE 1/4, SE 1/4	10	84N	4W

84410m - 031996  
84410n - 031996