

# SECTION CORNER CERTIFICATE

OF  
LAND SURVEY MONUMENTS SITUATED IN SECTION 3, TOWNSHIP 84 NORTH,  
RANGE 4 WEST, OF THE FIFTH PRINCIPAL MERIDIAN, JONES, COUNTY, IOWA.

PREVIOUSLY RECORDED IN BOOK \_\_\_\_\_ AT PAGE \_\_\_\_\_.

FOR RECORDER'S USE

REASON FOR PREPARING CERTIFICATE:

- ☒ A) THERE IS NO CERTIFICATE FOR THE CORNER ON FILE WITH THE RECORDER OF THE COUNTY IN WHICH THE CORNER IS LOCATED.
- ☐ B) CORNER POSITION DIFFERS FROM THAT SHOWN IN THE PUBLIC RECORDS OF THE COUNTY IN WHICH THE CORNER IS LOCATED.
- ☐ C) THE CORNER MONUMENT HAS BEEN REPLACED OR MODIFIED.
- ☐ D) THE REFERENCE TIES REFERRED TO IN AN EXISTING PUBLIC RECORD ARE INCORRECT.

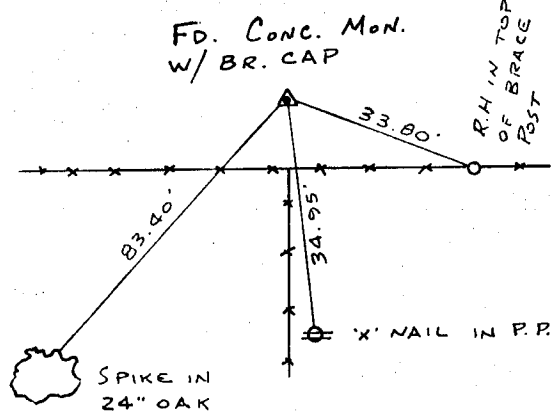
MONUMENT DESCRIPTION AND REMARKS:

S.W. CORNER SECTION 3-T84N-R4W FOUND CONC. MON. W/ BRASS CAP  
10" DEEP ALONG SOUTH R.O.W. OF ABANDONED RAILROAD

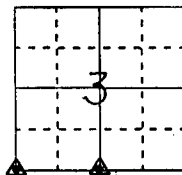
S'4 CORNER SECTION 3-T84N-R4W FOUND 5" REBAR NEXT TO STONE  
15" DEEP IN CORNFIELD

## RECOVERY TIE DRAWING

S.W. COR 3-84-4

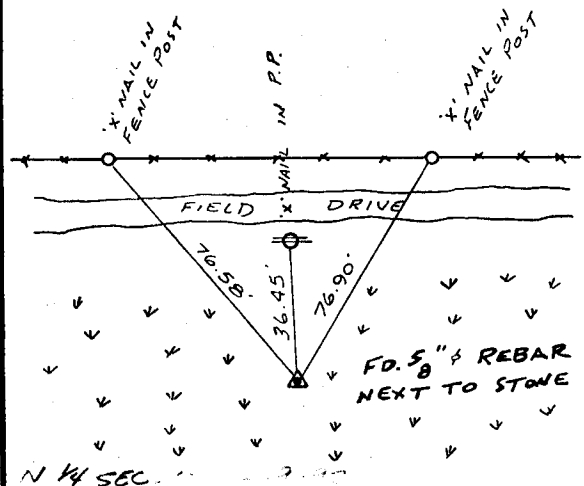


ON OLD NE COR SEC 9 M.S.



NOT TO SCALE

S'4 COR. 3-84-4



I, GLEN D. MEISNER, - CERTIFY THAT THE CORNER LOCATION(S) SHOWN ON THIS RECORD WERE DETERMINED BY ME OR UNDER MY DIRECTION AND CONTROL AND THAT THIS U.S. PUBLIC LAND SURVEY MONUMENT RECORD IS CORRECT AND COMPLETE TO THE BEST OF MY KNOWLEDGE AND BELIEF.

Glen D. Meisner 2-18-92  
GLEN D. MEISNER L.S. NO 8165 DATE



GOVERNMENT CORNER  
5/8" TIE PIN SET  
CENTERLINE  
EXISTING FENCE LINE  
R.O.W. LINE

SHEET TITLE: U.S. PUBLIC LAND SURVEY RECORD

PROJECT TITLE: GEORGE CASPERS SURVEY

HALL AND HALL ENGINEERS, INC.  
226 29TH STREET DRIVE S.E.  
CEDAR RAPIDS, IOWA 52403  
319-362-9548

DWN R.W.B.

CHK G.D.M.

APP

DATE 1-17-92

SCALE NONE

FNO DT 22

PNO 4466