

95 NOV 20 AM 11:06

BOOK 389 PAGE 96  
 LINDA J. BENDIXEN  
 RECORDER 6.00

UNITED STATES PUBLIC SECTION  
 CORNER CERTIFICATION  
 AND  
 LAND CORNER SURVEY  
 SECTION 11 T-84-N R-4-W  
 MADE FOR

IOWA DEPARTMENT OF TRANSPORTATION FOR  
 THE PURPOSE OF RIGHT OF WAY DESCRIPTION  
 ON PRIMARY ROAD No. U.S. 151.

PAGE 1 OF 1  
 MADE BY

MICHAEL R. FOGLE R.L.S. No. 8505  
 JONES COUNTY, IOWA NHS-151-3(84)-19-53  
 APRIL 1994 THRU AUGUST 1995

ALL DISTANCES WERE CAREFULLY MEASURED AND MAY NOT AGREE WITH  
 ROAD SURVEY STATIONING.

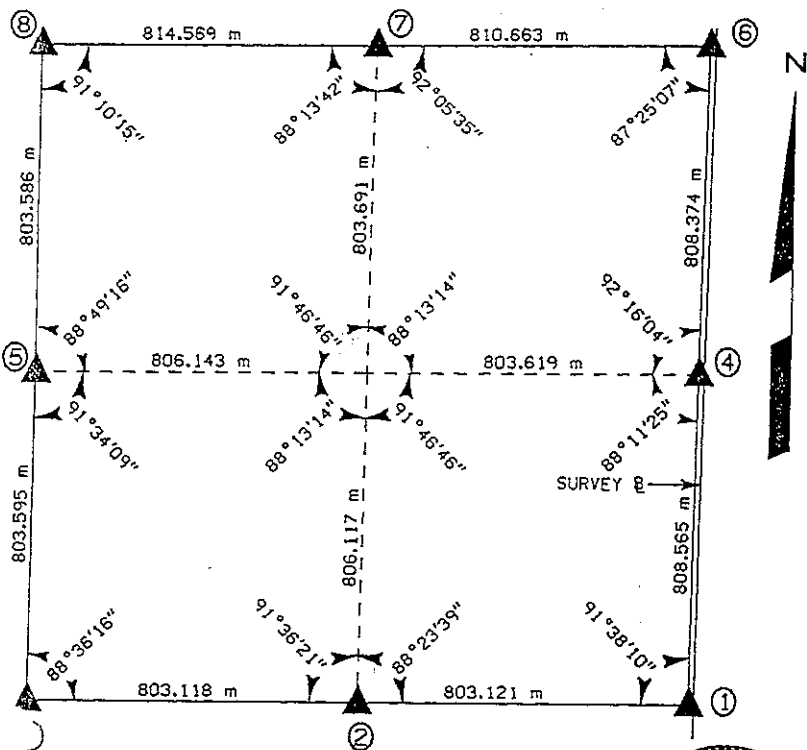
ALL DISTANCES ARE METRIC AND MEASURED IN METERS.

I hereby certify that this land surveying document was prepared by me  
 or under my direct personal supervision and that I am a duly  
 Registered Land Surveyor under the laws of the State of Iowa.

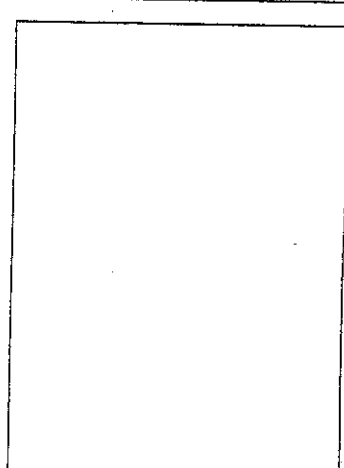
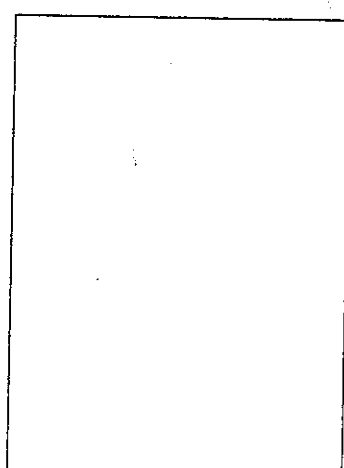
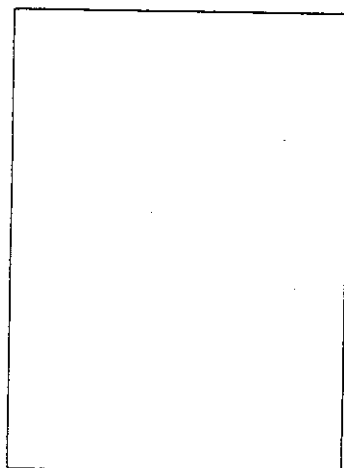
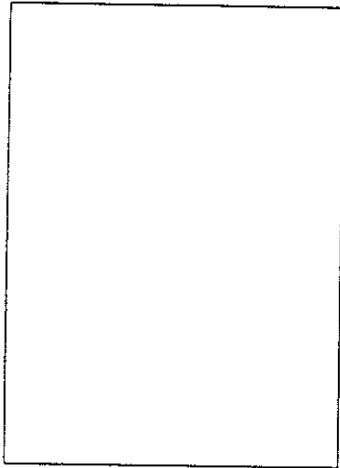
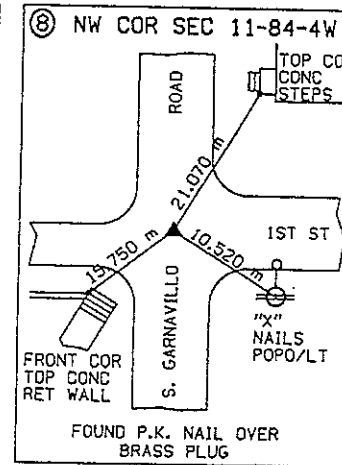
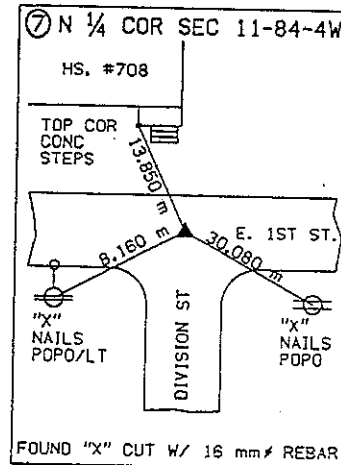
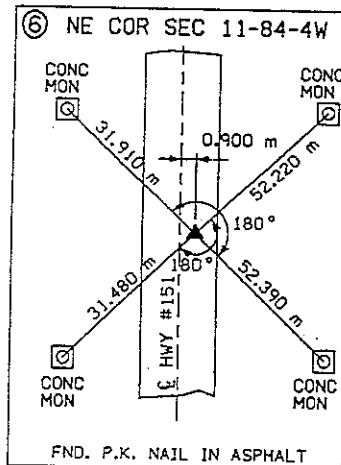
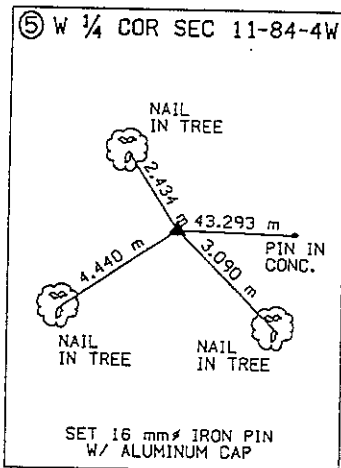
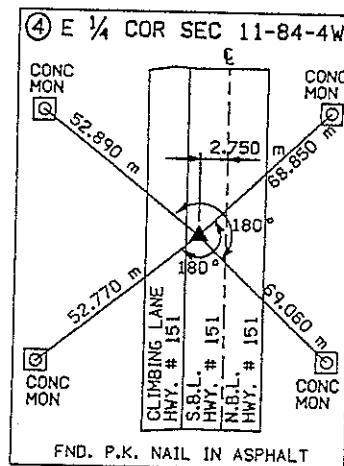
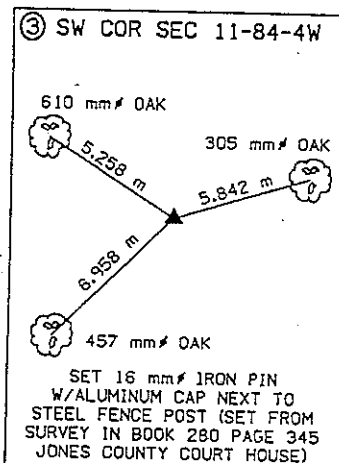
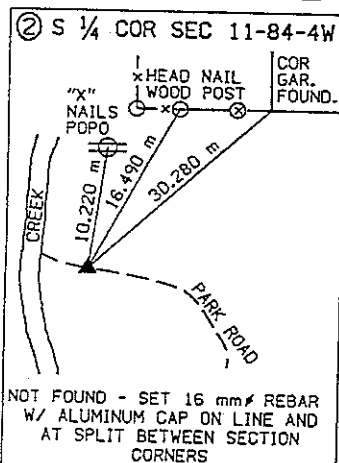
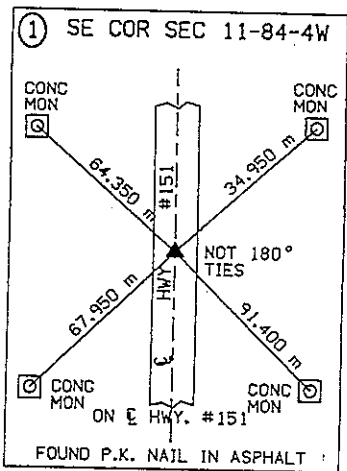
Signature: *Michael R. Fogle*  
 Name: Michael R. Fogle

Date 11-10-95 Reg. No. 8505

My registration renewal date is December 31, 1996



**RUST** ENVIRONMENT &  
 INFRASTRUCTURE



# THIS IS NOT A CERTIFICATION

JONES COUNTY ENGINEER'S OFFICE, 19501 HWY. 64, ANAMOSA, IOWA, 52205 (319)462-3785

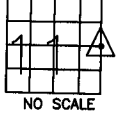
## UNITED STATES PUBLIC LAND SURVEY CORNER CERTIFICATE

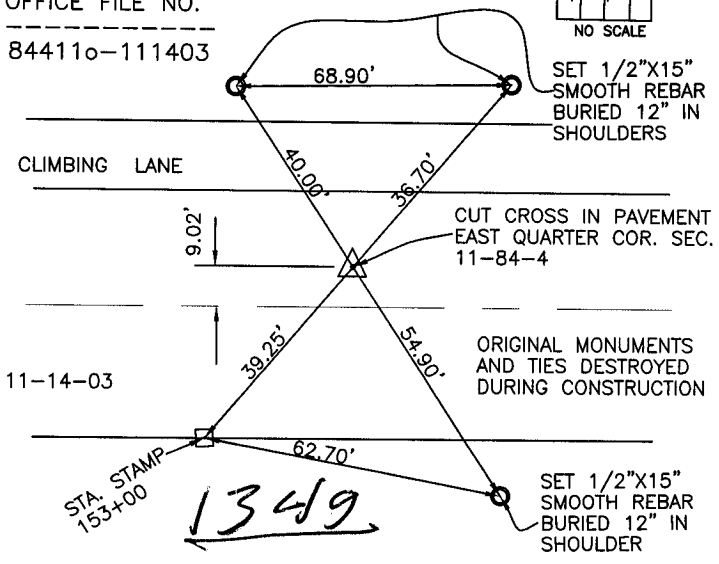
LAND SURVEY MONUMENTS SITUATED IN SECTION 11, TOWNSHIP 84  
NORTH, RANGE 4 WEST OF THE 5TH P.M., JONES COUNTY, IOWA

**CORNERS TO BE INDEXED**

|                        |               |                 |             |
|------------------------|---------------|-----------------|-------------|
| CORNER<br>EAST QUARTER | SECTION<br>11 | TOWNSHIP<br>84N | RANGE<br>4W |
|------------------------|---------------|-----------------|-------------|

OFFICE FILE NO.  
84411o-111403



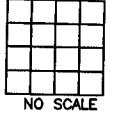


PREVIOUSLY RECORDED IN BOOK \_\_\_\_\_, PAGE \_\_\_\_\_  
MONUMENT DESCRIPTION AND HOW ESTABLISHED \_\_\_\_\_  
SET AND TIES FURNISHED BY THE IOWA DEPARTMENT OF  
TRANSPORTATION PER DENNIS KUNZE. INFORMATION FAXED TO  
COUNTY ENGINEER'S OFFICE 11-13-03.

**CORNERS TO BE INDEXED**

|        |         |          |       |
|--------|---------|----------|-------|
| CORNER | SECTION | TOWNSHIP | RANGE |
|--------|---------|----------|-------|

OFFICE FILE NO. \_\_\_\_\_

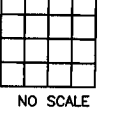


PREVIOUSLY RECORDED IN BOOK \_\_\_\_\_, PAGE \_\_\_\_\_  
MONUMENT DESCRIPTION AND HOW ESTABLISHED \_\_\_\_\_

**CORNERS TO BE INDEXED**

|        |         |          |       |
|--------|---------|----------|-------|
| CORNER | SECTION | TOWNSHIP | RANGE |
|--------|---------|----------|-------|

OFFICE FILE NO. \_\_\_\_\_

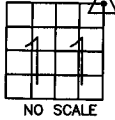


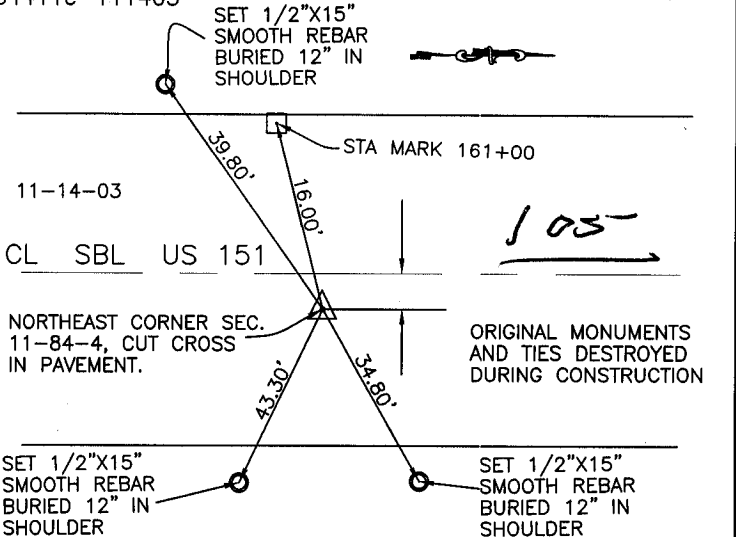
PREVIOUSLY RECORDED IN BOOK \_\_\_\_\_, PAGE \_\_\_\_\_  
MONUMENT DESCRIPTION AND HOW ESTABLISHED \_\_\_\_\_

**CORNERS TO BE INDEXED**

|                     |               |                 |             |
|---------------------|---------------|-----------------|-------------|
| CORNER<br>NORTHEAST | SECTION<br>11 | TOWNSHIP<br>84N | RANGE<br>3W |
|---------------------|---------------|-----------------|-------------|

OFFICE FILE NO.  
84411e-111403






PREVIOUSLY RECORDED IN BOOK \_\_\_\_\_, PAGE \_\_\_\_\_  
MONUMENT DESCRIPTION AND HOW ESTABLISHED \_\_\_\_\_  
SET AND TIES FURNISHED BY THE IOWA DEPARTMENT OF  
TRANSPORTATION PER DENNIS KUNZE. INFORMATION FAXED TO  
COUNTY ENGINEER'S OFFICE 11-13-03.

~~I hereby declare that this plat, survey or report was made by me or under my direct personal supervision and that I am a duly registered Land Surveyor under the laws of the State of Iowa.~~

Signed: \_\_\_\_\_

SEAL



JONES COUNTY  
ENGINEER'S OFFICE

19501 HWY. 64,  
ANAMOSA, IOWA,  
52205 (319)462-3785