

Number: 2026-1519
 Recorded: 5/21/2026 at 3:13:04.0 PM
 County Recording Fee: \$7.00
 Iowa E-Filing Fee: \$3.13
 Combined Fee: \$10.13
 Revenue Tax:
 Sheri L. Jones RECORDER
 Jones County, Iowa

PREPARED BY & RETURN TO: MICHAEL A. BROONER CIVIL DESIGN ADVANTAGE
 4121 NW URBANDALE DRIVE URBANDALE, IOWA 50322 PH: 515-369-4400 FAX: 515-369-4410

UNITED STATES PUBLIC LAND SURVEY CORNER CERTIFICATE OF

Land Survey Monuments situated in Section 7, Township 84N, Range 3W, of the
 Fifth Principal Meridian, JONES County, Iowa.
 Previously recorded in BK 2000 PG 2260 in County Recorder's Office.

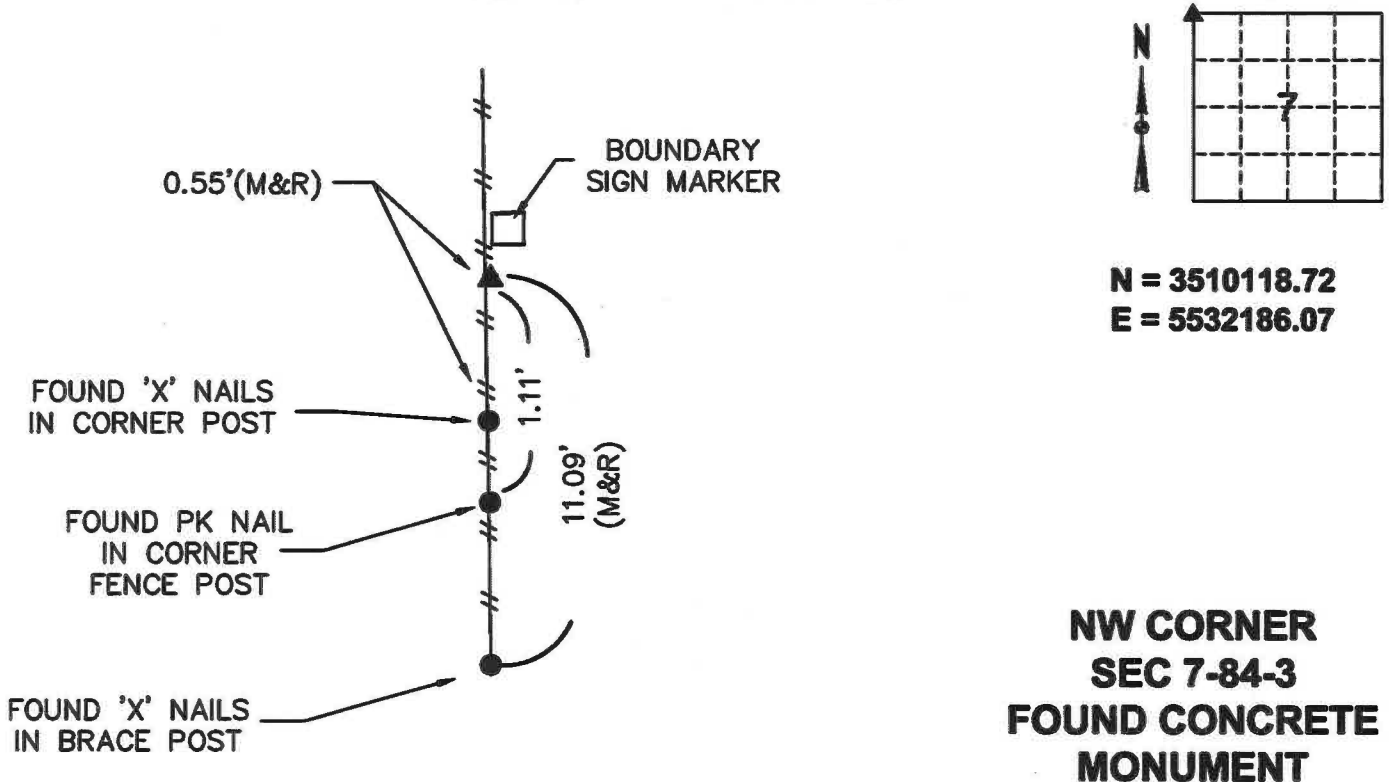
Monument Description and Remarks:

- THERE IS NO CERTIFICATE FOR THE CORNER ON FILE WITH THE RECORDER OF THE COUNTY IN WHICH THE CORNER IS LOCATED.
- THE SURVEYOR IN RESPONSIBLE CHARGE OF THE LAND SURVEYING ACCEPTS A CORNER POSITION WHICH DIFFERS FROM THAT SHOWN IN THE PUBLIC RECORDS OF THE COUNTY IN WHICH THE CORNER IS LOCATED.
- THE CORNER MONUMENT IS REPLACED OR MODIFIED IN ANY WAY.
- THE REFERENCE TIES IN AN EXISTING PUBLIC RECORD ARE INCORRECT OR MISSING.

**NW CORNER SECTION 7-84-3. FOUND CONCRETE MONUMENT USING EXISTING CORNER TIE CERTIFICATE.
 SET ADDITIONAL TIES AND USED FOR PLAT OF SURVEY.**

PLAN VIEW

(Show a minimum of three reference ties to durable physical objects, relevant monuments and physical conditions that will enable recovery of the corner.)



I HEREBY CERTIFY THAT THIS LAND SURVEYING DOCUMENT WAS PREPARED AND THE RELATED SURVEYING WORK WAS PERFORMED BY ME OR UNDER MY DIRECT SUPERVISION AND THAT I AM A DULY LICENSED LAND SURVEYOR UNDER THE LAWS OF THE STATE OF IOWA.

Michael Brooner 5-20-2026
 MICHAEL A. BROONER, P.L.S. DATE

LICENSE NUMBER 15980
 MY LICENSE RENEWAL DATE IS DECEMBER 31, 2026.
 CERTIFICATION COVERS THIS SHEET ONLY:

List Corners to be indexed			
Corners	Section	Twp	Range
NW COR	07	84	03
SW COR	06	84	03
NE COR	12	84	04
SE COR	01	84	04

Tech: EMG PN:2508.665 Date: 10-28-2025

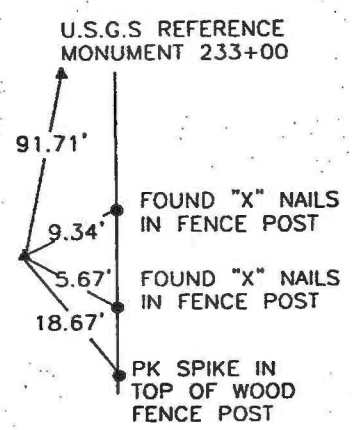
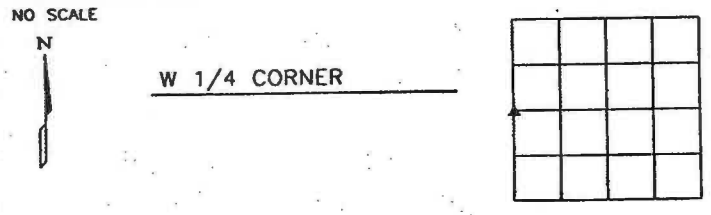
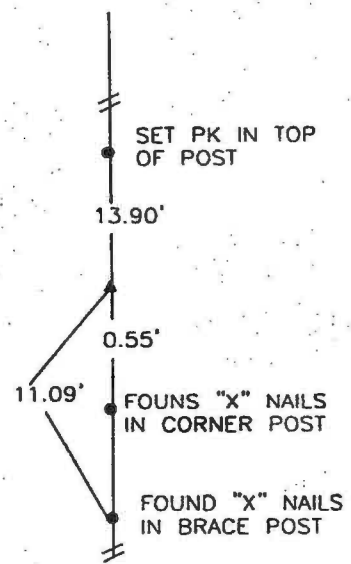
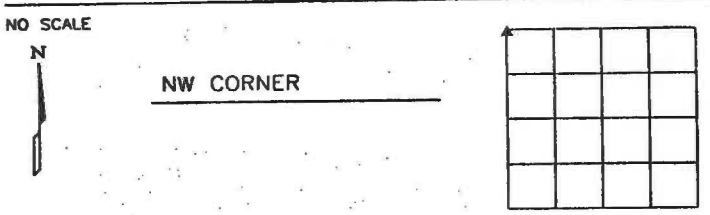
2000 2260
 FILED
 RECORDERS OFFICE
 JONES COUNTY IOWA
 00 JUL 21 AM 10:16
 MARIE KRUTZFIELD
 RECORDER 6.00 Pd

Jackson

LARENCE J. WALTON, BRAIN ENGINEERING, INC., 777 10TH STREET, MARION, IOWA 52302 PH. (319) 373-1318

UNITED STATES PUBLIC LAND SURVEY CORNER CERTIFICATE

LAND SURVEY MONUMENTS SITUATED IN SECTION 7, TOWNSHIP 84 NORTH
 RANGE 3 WEST OF THE 5TH P.M., _____ JONES _____ COUNTY, IOWA.



PREVIOUSLY RECORDED IN BOOK _____ PAGE _____
 MONUMENT DESCRIPTION AND HOW ESTABLISHED _____
 FOUND SCM 2" DEEP.

PREVIOUSLY RECORDED IN BOOK _____ PAGE _____
 MONUMENT DESCRIPTION AND HOW ESTABLISHED _____
 IDOT PIN WITH GREY CAP.



I hereby certify that this land surveying document and the related survey work was performed by me or under my direct personal supervision and that I am a duly licensed Land Surveyor under the laws of the State of Iowa.
 Signed Clarence J. Walton Date 7/17/00
 Clarence J. Walton, L.S.
 My License Renewal Date is December 31, ~~1999~~ 2004/
 License Number 11310
 Pages or sheets covered by this seal: 1 of 1

CORNER	SECTION	TOWNSHIP	RANGE
NW CORNER	7	T84N	R3W
W 1/4 CORNER	7	T84N	R3W

BRAIN ENGINEERING, INC.
 777 10TH STREET
 MARION, IOWA 52302 25519-10
 (319) 373-1318