

95 NOV 20 AM 11:06

BOOK 389 PAGE 96
 LINDA J. BENDIXEN
 RECORDER 6.00

UNITED STATES PUBLIC SECTION
 CORNER CERTIFICATION
 AND
 LAND CORNER SURVEY
 SECTION 11 T-84-N R-4-W
 MADE FOR

IOWA DEPARTMENT OF TRANSPORTATION FOR
 THE PURPOSE OF RIGHT OF WAY DESCRIPTION
 ON PRIMARY ROAD No. U.S. 151.

PAGE 1 OF 1
 MADE BY

MICHAEL R. FOGLE R.L.S. No. 8505
 JONES COUNTY, IOWA NHS-151-3(84)-19-53
 APRIL 1994 THRU AUGUST 1995

ALL DISTANCES WERE CAREFULLY MEASURED AND MAY NOT AGREE WITH
 ROAD SURVEY STATIONING.

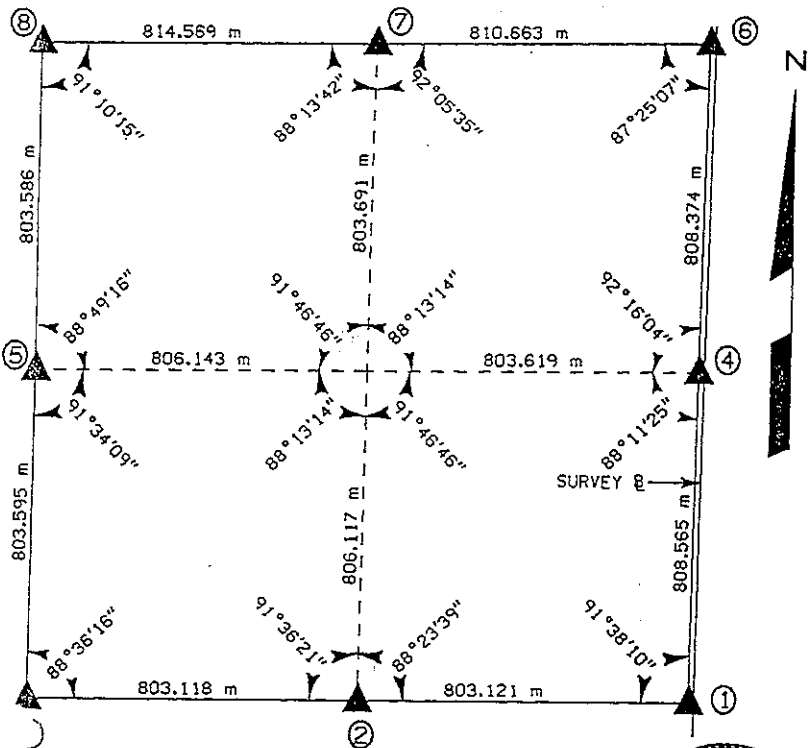
ALL DISTANCES ARE METRIC AND MEASURED IN METERS.

I hereby certify that this land surveying document was prepared by me
 or under my direct personal supervision and that I am a duly
 Registered Land Surveyor under the laws of the State of Iowa.

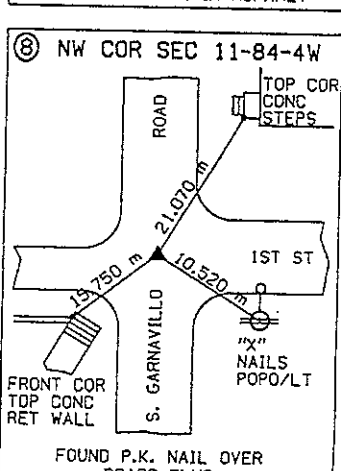
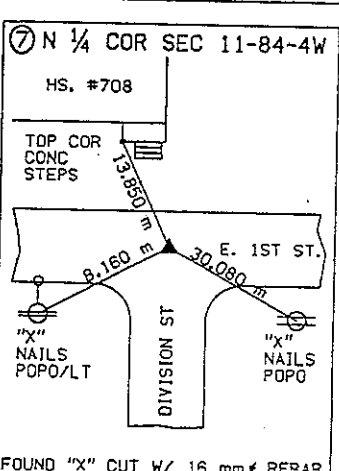
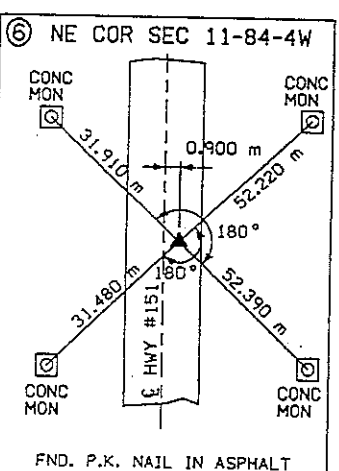
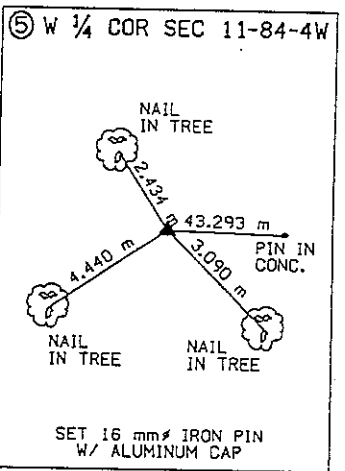
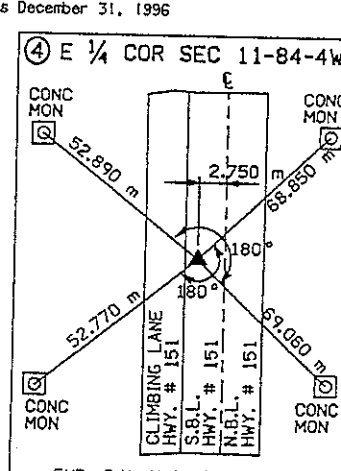
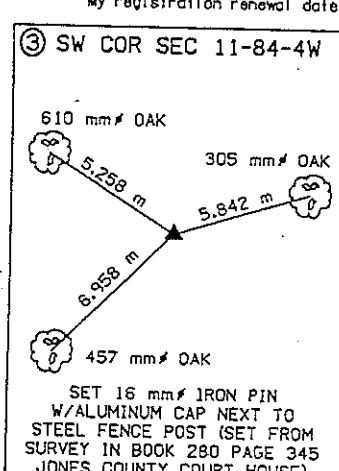
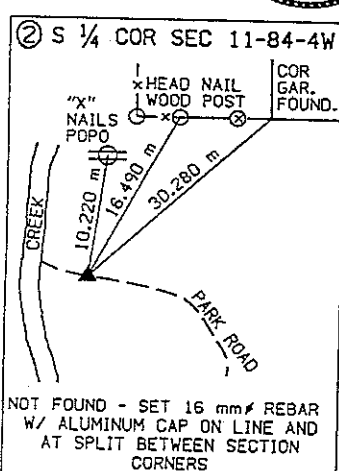
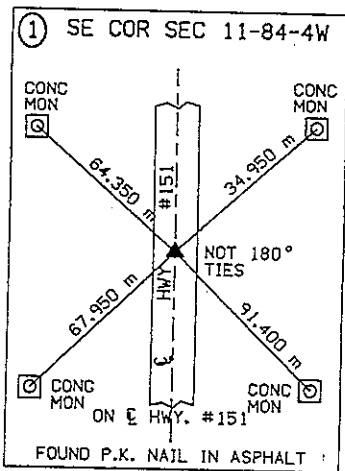
Signature: *Michael R. Fogle*
 Name: Michael R. Fogle

Date 11-10-95 Reg. No. 8505

My registration renewal date is December 31, 1996



RUST ENVIRONMENT &
 INFRASTRUCTURE



THIS IS NOT A CERTIFICATION

JONES COUNTY ENGINEER'S OFFICE, 19501 HWY. 64, ANAMOSA, IOWA, 52205 (319)462-3785

UNITED STATES PUBLIC LAND SURVEY CORNER CERTIFICATE

LAND SURVEY MONUMENTS SITUATED IN SECTION 14, TOWNSHIP 84
NORTH, RANGE 4 WEST OF THE 5TH P.M., JONES COUNTY, IOWA

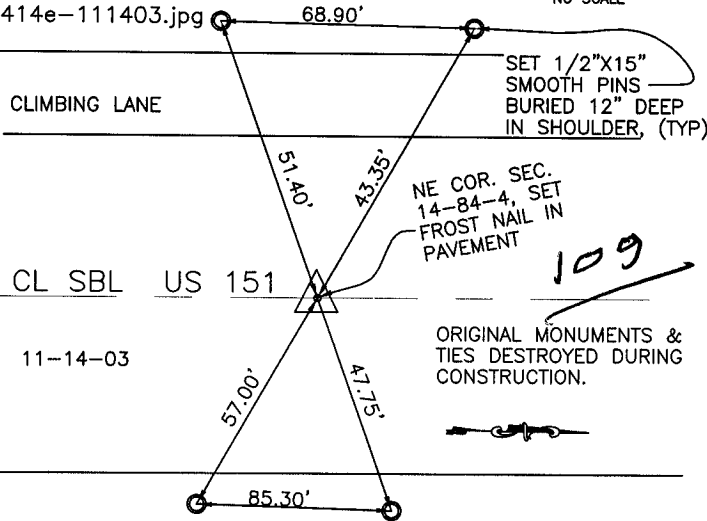
CORNERS TO BE INDEXED

CORNER SECTION TOWNSHIP RANGE
NORTHEAST 14 84N 4W



OFFICE FILE NO.

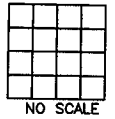
84414e-111403.jpg



PREVIOUSLY RECORDED IN BOOK _____, PAGE _____
MONUMENT DESCRIPTION AND HOW ESTABLISHED _____
SET AND TIES FURNISHED BY THE IOWA DEPARTMENT OF
TRANSPORTATION PER DENNIS KUNZE. INFORMATION FAXED TO
ENGINEER'S OFFICE 11-13-03.

CORNERS TO BE INDEXED

CORNER SECTION TOWNSHIP RANGE



OFFICE FILE NO.

PREVIOUSLY RECORDED IN BOOK _____, PAGE _____
MONUMENT DESCRIPTION AND HOW ESTABLISHED _____

CORNERS TO BE INDEXED

CORNER SECTION TOWNSHIP RANGE

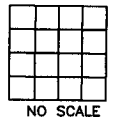


OFFICE FILE NO.

PREVIOUSLY RECORDED IN BOOK _____, PAGE _____
MONUMENT DESCRIPTION AND HOW ESTABLISHED _____

CORNERS TO BE INDEXED

CORNER SECTION TOWNSHIP RANGE



OFFICE FILE NO.

PREVIOUSLY RECORDED IN BOOK _____, PAGE _____
MONUMENT DESCRIPTION AND HOW ESTABLISHED _____

~~I hereby declare that this plat, survey or report was made by me or under my direct personal supervision and that I am a duly registered Land Surveyor under the laws of the State of Iowa.~~

Signed:

SEAL

JONES COUNTY
ENGINEER'S OFFICE

19501 HWY. 64,
ANAMOSA, IOWA,
52205 (319)462-3785

SECTION CORNER CERTIFICATE

OF
 LAND SURVEY MONUMENTS SITUATED IN SECTION 14, TOWNSHIP 84 NORTH,
 RANGE 4 WEST, OF THE FIFTH PRINCIPAL MERIDIAN, JONES, COUNTY, IOWA.

PREVIOUSLY RECORDED IN BOOK _____ AT PAGE _____.

FOR RECORDER'S USE

REASON FOR PREPARING CERTIFICATE:

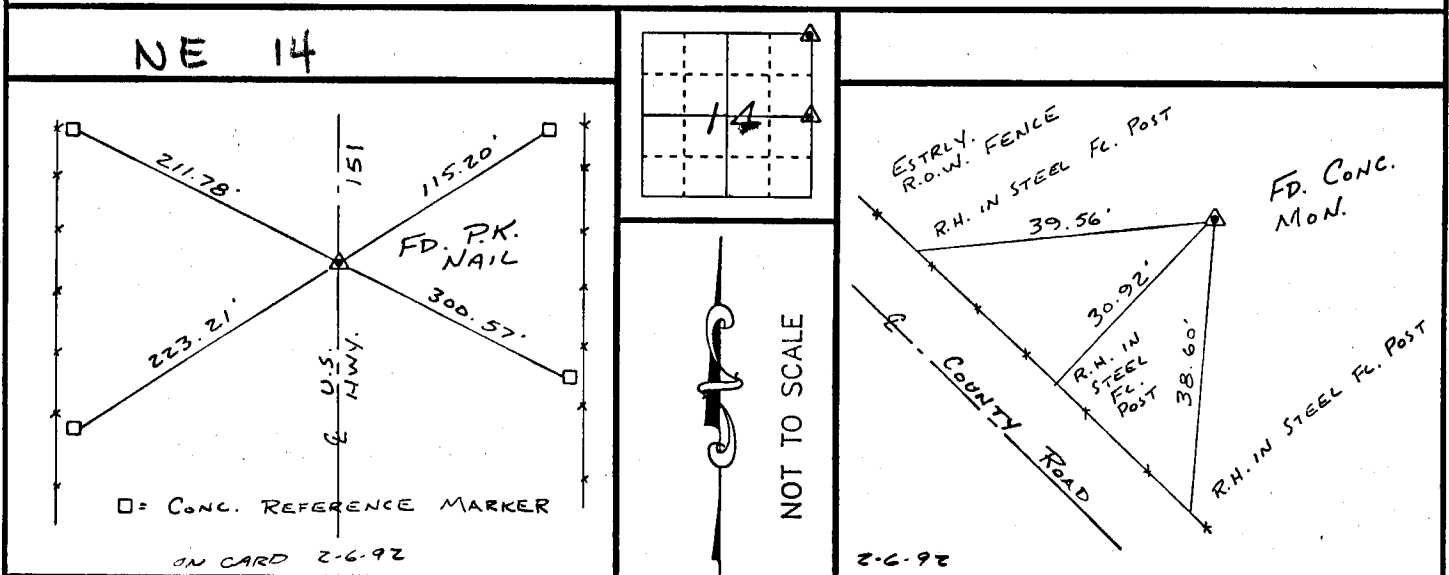
- A) THERE IS NO CERTIFICATE FOR THE CORNER ON FILE WITH THE RECORDER OF THE COUNTY IN WHICH THE CORNER IS LOCATED.
- B) CORNER POSITION DIFFERS FROM THAT SHOWN IN THE PUBLIC RECORDS OF THE COUNTY IN WHICH THE CORNER IS LOCATED.
- C) THE CORNER MONUMENT HAS BEEN REPLACED OR MODIFIED.
- D) THE REFERENCE TIES REFERRED TO IN AN EXISTING PUBLIC RECORD ARE INCORRECT.

MONUMENT DESCRIPTION AND REMARKS :

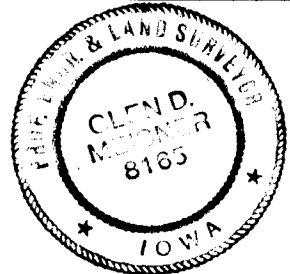
N.E. CoR. SECTION 14-T84N-R4W FOUND P.K. NAIL IN
 & U.S. HWY 151 @ STA. 310 + 13.98

E'4 CoR. SECTION 14-T84N-R4W FOUND CONC. MON. WITH
 1/2" IRON PIN

RECOVERY TIE DRAWING



I, GLEN D. MEISNER, CERTIFY THAT THE CORNER LOCATION(S) SHOWN ON THIS RECORD WERE DETERMINED BY ME OR UNDER MY DIRECTION AND CONTROL AND THAT THIS U.S. PUBLIC LAND SURVEY MONUMENT RECORD IS CORRECT AND COMPLETE TO THE BEST OF MY KNOWLEDGE AND BELIEF.



Glen D. Meisner 2-3-92
 GLEN D. MEISNER L.S. NO 8165 DATE

DZM:GML	GOVERNMENT CORNER 5/8" TIE PIN SET CENTERLINE EXISTING FENCE LINE R.O.W. LINE	SHEET TITLE: U.S. PUBLIC LAND SURVEY RECORD PROJECT TITLE: DR. BRIAN DARROW SURVEY	HALL AND HALL ENGINEERS, INC. 226 29TH STREET DRIVE S.E. CEDAR RAPIDS, IOWA 52403 319-362-9548
	DWN R.W.B. KIC G.D.M. APP	DATE: 1-30-92 SCALE: NONE	