

2002 4123  
FILED  
RECORDERS OFFICE  
JONES COUNTY IOWA

84417e-110402 #93

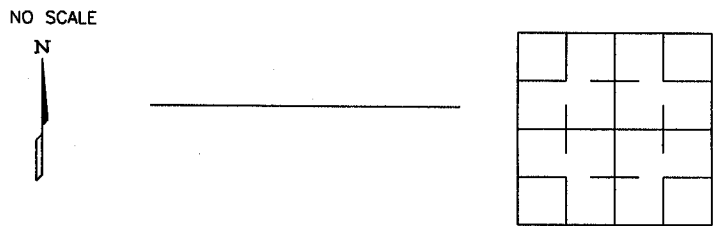
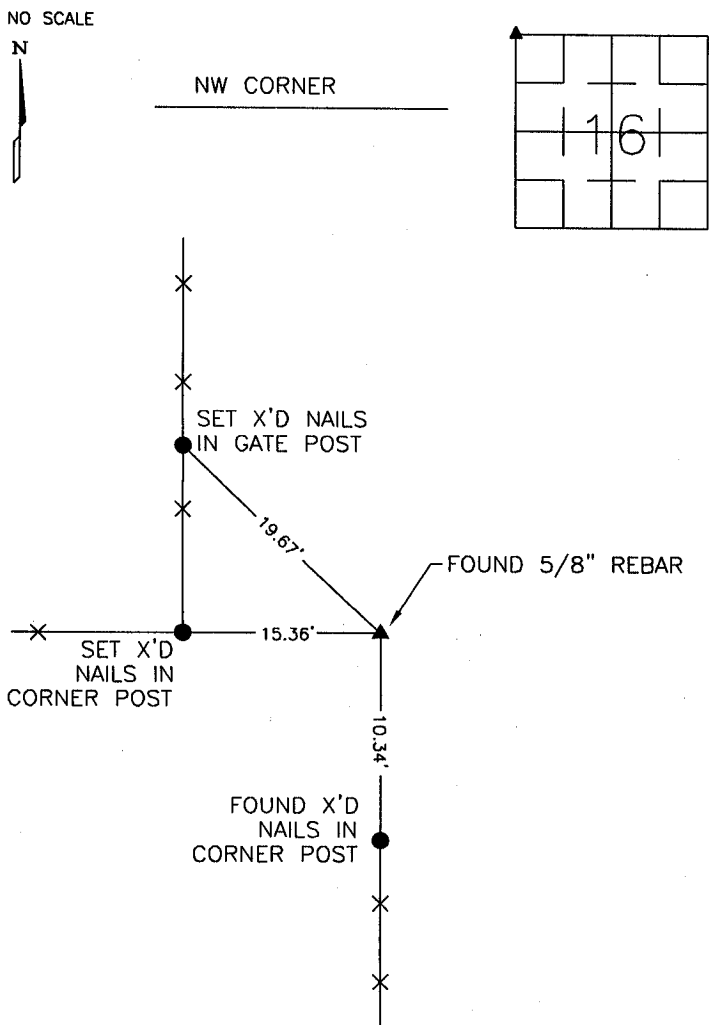
02 NOV -5 AM 11:06

MARIE KRUTZFIELD  
RECORDER 6.00 pd

PREPARED BY  
STEPHEN MICHAEL BRAIN, BRAIN ENGINEERING, INC., 777 10TH STREET, MARION, IOWA 52302 PH. (319) 373-1318

# UNITED STATES PUBLIC LAND SURVEY CORNER CERTIFICATE

LAND SURVEY MONUMENTS SITUATED IN SECTION 16, TOWNSHIP 84 NORTH  
RANGE 4 WEST OF THE 5TH P.M., JONES COUNTY, IOWA.



PREVIOUSLY RECORDED IN BOOK \_\_\_\_\_ PAGE \_\_\_\_\_

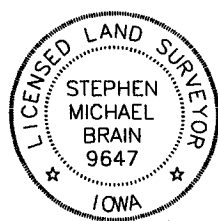
MONUMENT DESCRIPTION AND HOW ESTABLISHED \_\_\_\_\_

FOUND 1/2" REBAR 1" ABOVE GROUND PER JONES

COUNTY ENGINEERING DEPARTMENT TIES \_\_\_\_\_

PREVIOUSLY RECORDED IN BOOK \_\_\_\_\_ PAGE \_\_\_\_\_

MONUMENT DESCRIPTION AND HOW ESTABLISHED \_\_\_\_\_



I hereby certify that this land surveying document and the related survey work was performed by me or under my direct personal supervision and that I am a duly licensed Land Surveyor under the laws of the State of Iowa.

Signed \_\_\_\_\_ Date 11/04/02

Stephen Michael Brain, L.S.  
My License Renewal Date Is December 31, 2002  
License Number 9647  
Pages or sheets covered by this seal: 1/1

- A.THERE IS NO CERTIFICATE FOR THE CORNER ON FILE WITH THE RECORDER OF THE COUNTY IN WHICH THE CORNER IS LOCATED
- B.THE SURVEYOR IN RESPONSIBLE CHARGE OF THE LAND SURVEYING ACCEPTS A CORNER POSITION WHICH DIFFERS FROM THAT SHOWN IN THE PUBLIC RECORDS OF THE COUNTY IN WHICH THE CORNER IS LOCATED.
- C.THE CORNER MONUMENT IS REPLACED OR MODIFIED IN ANY WAY.
- D.THE REFERENCE TIES REFERRED TO IN AN EXISTING PUBLIC RECORD ARE NOT CORRECT.

### CORNERS TO BE INDEXED

CORNER	SECTION	TOWNSHIP	RANGE
NW	16	T84N	R4W

HD  
11/4/02

**BRAIN ENGINEERING, INC.**  
777 10TH STREET  
MARION, IOWA 52302 29542-10  
(319) 373-1318

# SECTION CORNER CERTIFICATE

OF  
 LAND SURVEY MONUMENTS SITUATED IN SECTION 8, TOWNSHIP 84 NORTH,  
 RANGE 4 WEST, OF THE FIFTH PRINCIPAL MERIDIAN, JONES, COUNTY, IOWA.

PREVIOUSLY RECORDED IN BOOK \_\_\_\_\_ AT PAGE \_\_\_\_\_

FOR RECORDER'S USE

**REASON FOR PREPARING CERTIFICATE:**

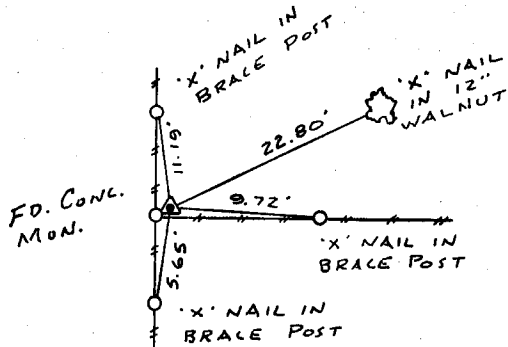
- A) THERE IS NO CERTIFICATE FOR THE CORNER ON FILE WITH THE RECORDER OF THE COUNTY IN WHICH THE CORNER IS LOCATED.
- B) CORNER POSITION DIFFERS FROM THAT SHOWN IN THE PUBLIC RECORDS OF THE COUNTY IN WHICH THE CORNER IS LOCATED.
- C) THE CORNER MONUMENT HAS BEEN REPLACED OR MODIFIED.
- D) THE REFERENCE TIES REFERRED TO IN AN EXISTING PUBLIC RECORD ARE INCORRECT.

**MONUMENT DESCRIPTION AND REMARKS :**

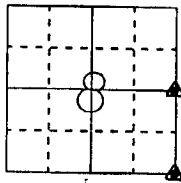
E '4 CORNER SECTION 8-T84N-R4W FOUND CONC. MON. WITH BRASS PLUG 16" ABOVE GROUND 0.5' EAST AND 0.8' NORTH OF FENCE CORNER  
 S.E. CORNER SECTION 8-T84N-R4W FOUND 5/8" REBAR 1" BELOW SURFACE ON EAST EDGE OF FIELD DRIVE

## RECOVERY TIE DRAWING

E '4 CORNER 8-84-4

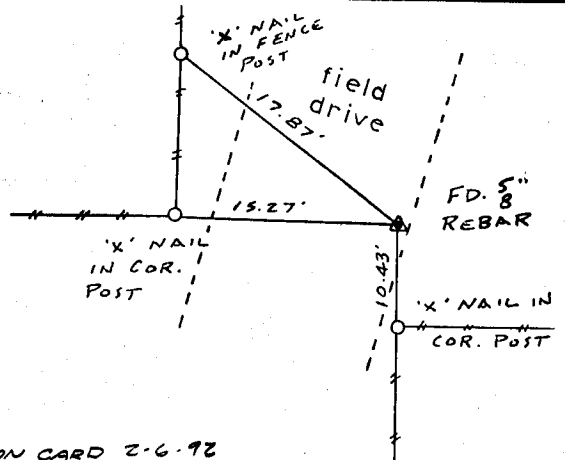


ON CARD 2-6-92



NOT TO SCALE

S.E. CORNER 8-84-4

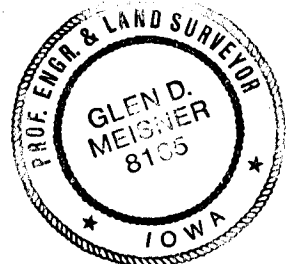


ON CARD 2-6-92  
 NE COR SEC 17

I, GLEN D. MEISNER, CERTIFY THAT THE CORNER LOCATION(S) SHOWN ON THIS RECORD WERE DETERMINED BY ME OR UNDER MY DIRECTION AND CONTROL AND THAT THIS U.S. PUBLIC LAND SURVEY MONUMENT RECORD IS CORRECT AND COMPLETE TO THE BEST OF MY KNOWLEDGE AND BELIEF.

Glen D. Meisner 1-20-92  
 GLEN D. MEISNER L.S. NO 8165 DATE

844080-012092  
 844170-012092



DZ:MDPT	<input checked="" type="checkbox"/> GOVERNMENT CORNER <input type="checkbox"/> 5/8" TIE PIN SET	SHEET TITLE: U.S. PUBLIC LAND SURVEY RECORD		<b>HALL AND HALL ENGINEERS, INC.</b> 226 29TH STREET DRIVE S.E. CEDAR RAPIDS, IOWA 52403 319-362-9548			
	<input type="checkbox"/> CENTERLINE <input type="checkbox"/> EXISTING FENCE LINE <input type="checkbox"/> R.O.W. LINE	PROJECT TITLE: TOM DURGIN SURVEY					
DWN	R.W.B.	KIC G.D.M.	APP	DATE 9-26-91	SCALE NONE	FNO 0T 23	PNO 4554