

SECTION CORNER CERTIFICATE

OF
 LAND SURVEY MONUMENTS SITUATED IN SECTION 18, TOWNSHIP 84 NORTH,
 RANGE 4 WEST, OF THE FIFTH PRINCIPAL MERIDIAN, Jones, COUNTY, IOWA.

PREVIOUSLY RECORDED IN BOOK _____ AT PAGE _____.

FOR RECORDER'S USE

REASON FOR PREPARING CERTIFICATE:

- A) THERE IS NO CERTIFICATE FOR THE CORNER ON FILE WITH THE RECORDER OF THE COUNTY IN WHICH THE CORNER IS LOCATED.
- B) CORNER POSITION DIFFERS FROM THAT SHOWN IN THE PUBLIC RECORDS OF THE COUNTY IN WHICH THE CORNER IS LOCATED.
- C) THE CORNER MONUMENT HAS BEEN REPLACED OR MODIFIED.
- D) THE REFERENCE TIES REFERRED TO IN AN EXISTING PUBLIC RECORD ARE INCORRECT.

MONUMENT DESCRIPTION AND REMARKS:

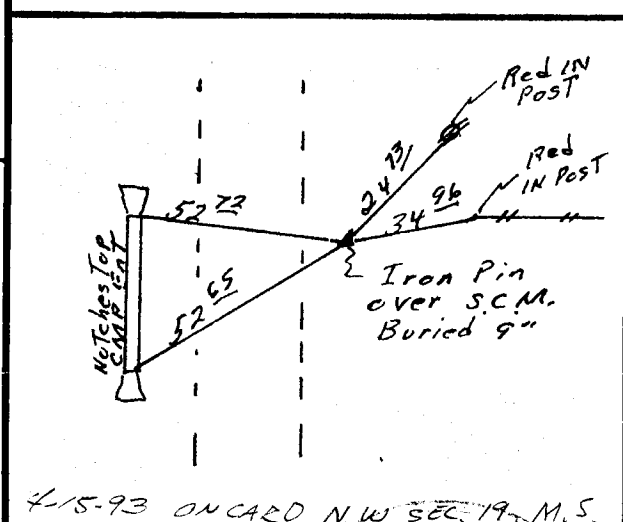
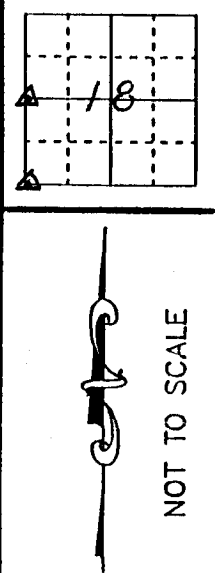
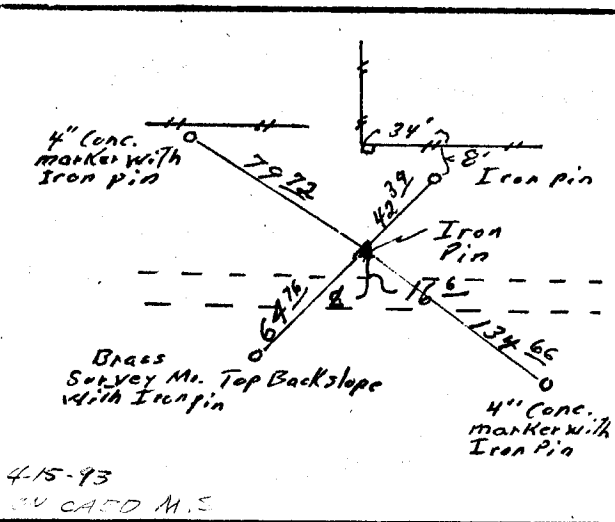
SW Corner Sec. 18 - Found 5/8"x24" Iron Pin over top of small S.C.M. - 5"x4"x12" Buried 9" in foreslope.

W 1/4 Corner Sec. 18 - Found Iron Pin in foreslope of grade 16.6' North of E one foot below surface.

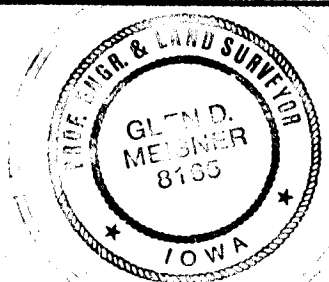
RECOVERY TIE DRAWING

W 1/4 Cor. 18-84-4

SW Cor. 18-84-4



I, GLEN D. MEISNER, CERTIFY THAT THE CORNER LOCATION(S) SHOWN ON THIS RECORD WERE DETERMINED BY ME OR UNDER MY DIRECTION AND CONTROL AND THAT THIS U.S. PUBLIC LAND SURVEY MONUMENT RECORD IS CORRECT AND COMPLETE TO THE BEST OF MY KNOWLEDGE AND BELIEF.



Glen D. Meisner 10-6-92
 GLEN D. MEISNER L.S. NO 8165 DATE

D Z F O R E L	△ GOVERNMENT CORNER ○ 5/8" THE PIN SET - CENTERLINE - EXISTING FENCE LINE - R.O.W. LINE	SHEET NO: _____ U.S. PUBLIC LAND SURVEY RECORD PROJECT TITLE: <u>JONES COUNTY PROJCT</u>	HALL AND HALL ENGINEERS, INC. 226 29TH STREET DRIVE S.E. CEDAR RAPIDS, IOWA 52403 319-362-9548			
	D W N P.D.V.	G H R		A P P	DATE	SCALE None