

Paul H. Helland, 1107 Technology Parkway, Cedar Falls, Iowa 50613-6951, (319)-266-0161

## UNITED STATES PUBLIC LAND SURVEY CORNER CERTIFICATE OF

LAND SURVEY MONUMENTS SITUATED IN SECTION NO. 18, TOWNSHIP NO. 84 NORTH, RANGE NO. 4 WEST OF THE FIFTH PRINCIPAL MERIDIAN, JONES COUNTY, IOWA.  
PREVIOUSLY RECORDED IN BOOK 415, PAGE 26.

(SHOW REASON FOR PREPARING THIS CERTIFICATE, THE EVIDENCE AND DETAILED PROCEDURES USED IN ESTABLISHING THE CORNER POSITIONS AND MONUMENTATION FOUND OR PLACED.)

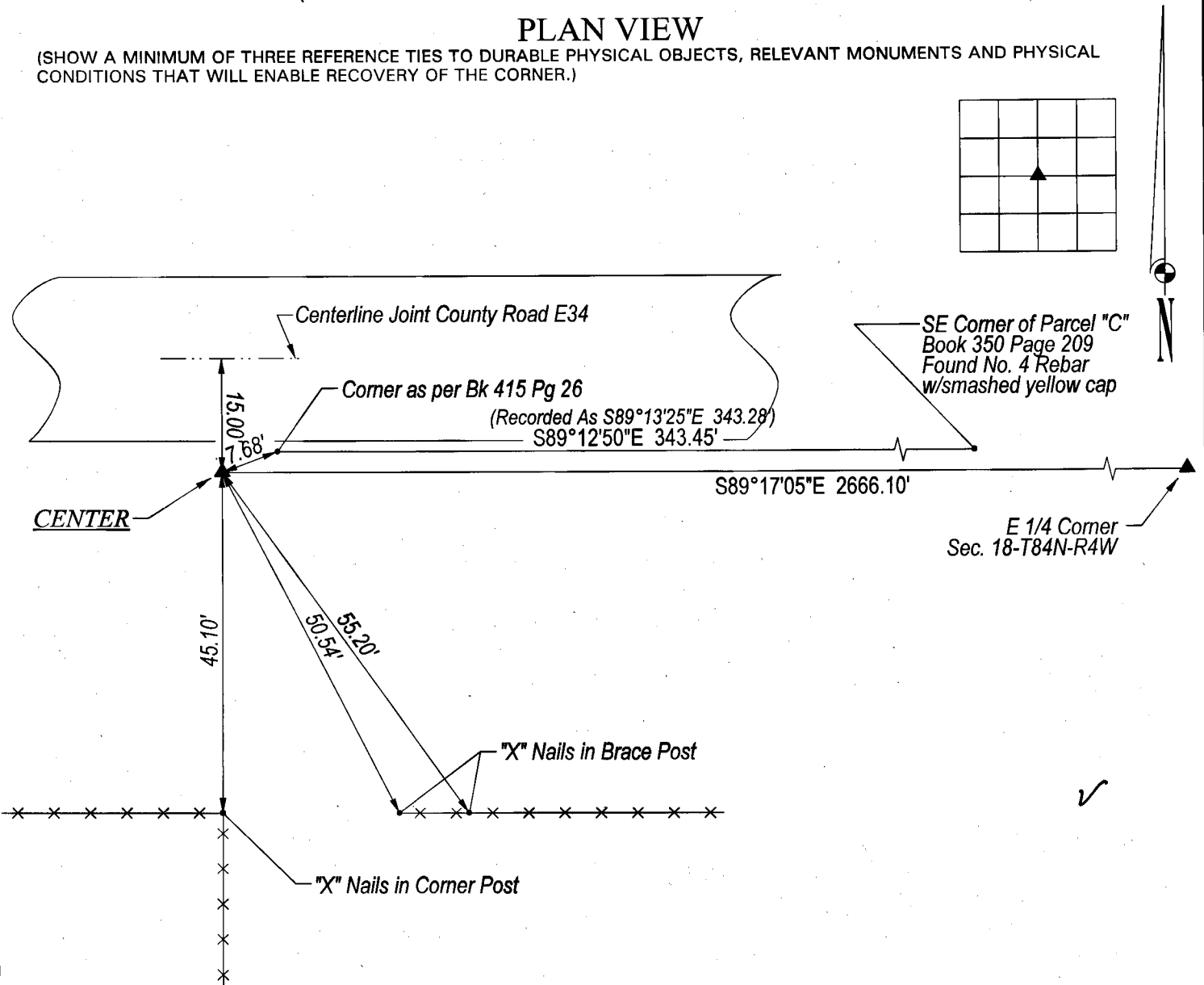
MONUMENT DESCRIPTION AND REMARKS:  
SURVEY DONE IN SE 1/4 NE 1/4 OF SEC. 18-T84N-R4W

THIS CERTIFICATE IS FILED TO CORRECT  
TOWNSHIP NO. ON 1999 4308

CENTER: CORNER AS SHOWN IN BK 415 PG 26 WAS SET AT THE INTERSECTION OF LINES BETWEEN THE N 1/4 & S 1/4 CORNERS AND THE W 1/4 & E 1/4 CORNERS, CORNER CERTIFICATE SHOWS CORNER IN LINE WITH FENCE SOUTH, YET FENCE AS LOCATED IN FIELD IS 7.2' WEST OF CORNER.  
NEW CENTER: FOUND NO. 4 REBAR WITH PINK FLAGGING (0.3' DEEP) 2.75' SOUTH & 7.18' WEST OF CENTER AS LOCATED IN BK 415 PG 26 (NO. 4 REBAR W/SMASHED YELLOW CAP).

### PLAN VIEW

(SHOW A MINIMUM OF THREE REFERENCE TIES TO DURABLE PHYSICAL OBJECTS, RELEVANT MONUMENTS AND PHYSICAL CONDITIONS THAT WILL ENABLE RECOVERY OF THE CORNER.)



**HELLAND ENGINEERING & SURVEYING, LTD.**  
1107 Technology Parkway  
Cedar Falls, Iowa 50613-6951  
(319)-266-0161

FILE NAME: 99-279C1.DRG



I hereby certify that this land surveying document was prepared and the related survey work was performed by me or under my direct personal supervision and that I am a duly licensed Land Surveyor under the laws of the State of Iowa.

*Paul H. Helland 12/9/99*  
Paul H. Helland  
License Number 6505  
My license renewal date is December 31, 1999.  
All pages or sheets are covered by this seal except:

LIST CORNERS TO BE INDEXED			
CORNER	SECTION	TOWNSHIP	RANGE
CENTER	18	84N	4W

Foot

PREPARED BY HALL & HALL ENGINEERS, INC. 209 29TH STREET N.E. CEDAR RAPIDS, IOWA 52402 (319) 362-9548

SECTION CORNER CERTIFICATE

OF

LAND SURVEY MONUMENTS SITUATED IN SECTION 18, TOWNSHIP 84 NORTH, RANGE 4 WEST, OF THE FIFTH PRINCIPAL MERIDIAN, JONES COUNTY, IOWA.

PREVIOUSLY RECORDED IN BOOK \_\_\_\_\_ AT PAGE \_\_\_\_\_

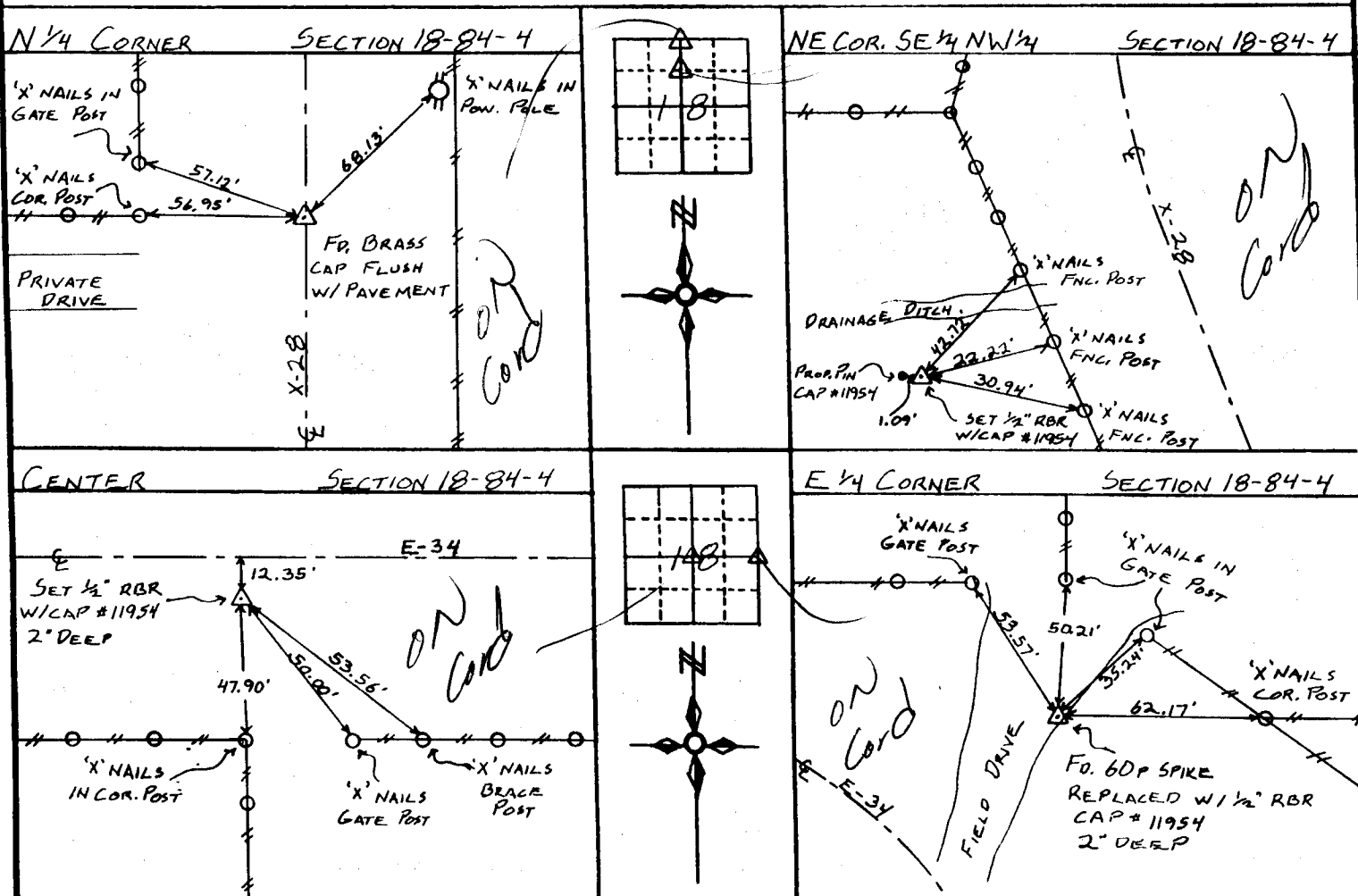
REASON FOR PREPARING CERTIFICATE:

- A) THERE IS NO CERTIFICATE FOR THE CORNER ON FILE WITH THE RECORDER OF THE COUNTY IN WHICH THE CORNER IS LOCATED.
- B) CORNER POSITION DIFFERS FROM THAT SHOWN IN THE PUBLIC RECORDS OF THE COUNTY IN WHICH THE CORNER IS LOCATED.
- C) THE CORNER MONUMENT HAS BEEN REPLACED OR MODIFIED
- D) THE REFERENCE TIES REFERRED TO IN AN EXISTING PUBLIC RECORD ARE INCORRECT

MONUMENT DESCRIPTION AND REMARKS:

NORTH 1/4 COR. SECTION 18-84-4: FOUND BRASS CAP FLUSH W/ PAVEMENT, & CO. RD. X-28  
 NE COR. SE 1/4 NW 1/4 SECTION 18-84-4: SET 1/2" REBAR W/CAP #11954, FLUSH WITH GROUND  
 CENTER OF SECTION 18-84-4: SET 1/2" REBAR W/CAP #11954, 2" BELOW SURFACE  
 EAST 1/4 COR. SECTION 18-84-4: FOUND BRIDGE SPIKE, REPLACED W/ 1/2" REBAR CAP #11954, 2" DEEP

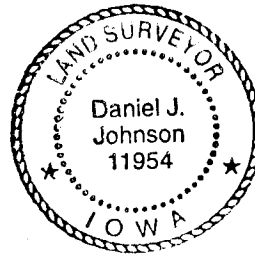
RECOVERY TIE DRAWING



I, DANIEL J. JOHNSON, - CERTIFY THAT THE CORNER LOCATION(S) SHOWN ON THIS RECORD WERE DETERMINED BY ME OR UNDER MY DIRECTION AND CONTROL AND THAT THIS U S PUBLIC LAND SURVEY MONUMENT RECORD IS CORRECT AND COMPLETE TO THE BEST OF MY KNOWLEDGE AND BELIEF.

Daniel J. Johnson  
DANIEL J. JOHNSON L.S. NO. 11954 DATE 12-19-96

84418c - 121996  
84418h - 121996  
84418o - 121996  
84418m - 121996



MY LICENSE RENEWAL DATE IS DECEMBER 31, 1998

LEGEND	△ GOVERNMENT CORNER	SHEET TITLE: U.S. PUBLIC LAND SURVEY RECORD	HALL AND HALL ENGINEERS, INC. 209 29TH STREET NE CEDAR RAPIDS, IOWA 52402 (319) 362-9548
	● PROPERTY CORNER FOUND		
○ 1/2" X 3/4" W/ L.S. CAP SET	PROJECT FILE: HERTZ REAL ESTATE	DATE: 3/15/04	SCAFF: ALD. 15
---	EXISTING FENCE LINE		
---	PROPERTY LINE		
CREATED BY: JSR	APP: JWP		
			NO. 5137