

Paul H. Helland, 1107 Technology Parkway, Cedar Falls, Iowa 50613-6951, (319)-266-0161

UNITED STATES PUBLIC LAND SURVEY CORNER CERTIFICATE OF

LAND SURVEY MONUMENTS SITUATED IN SECTION NO. 18, TOWNSHIP NO. 84 NORTH, RANGE NO. 4 WEST OF THE FIFTH PRINCIPAL MERIDIAN, JONES COUNTY, IOWA.
PREVIOUSLY RECORDED IN BOOK 415, PAGE 26.

(SHOW REASON FOR PREPARING THIS CERTIFICATE, THE EVIDENCE AND DETAILED PROCEDURES USED IN ESTABLISHING THE CORNER POSITIONS AND MONUMENTATION FOUND OR PLACED.)

MONUMENT DESCRIPTION AND REMARKS:
SURVEY DONE IN SE 1/4 NE 1/4 OF SEC. 18-T84N-R4W

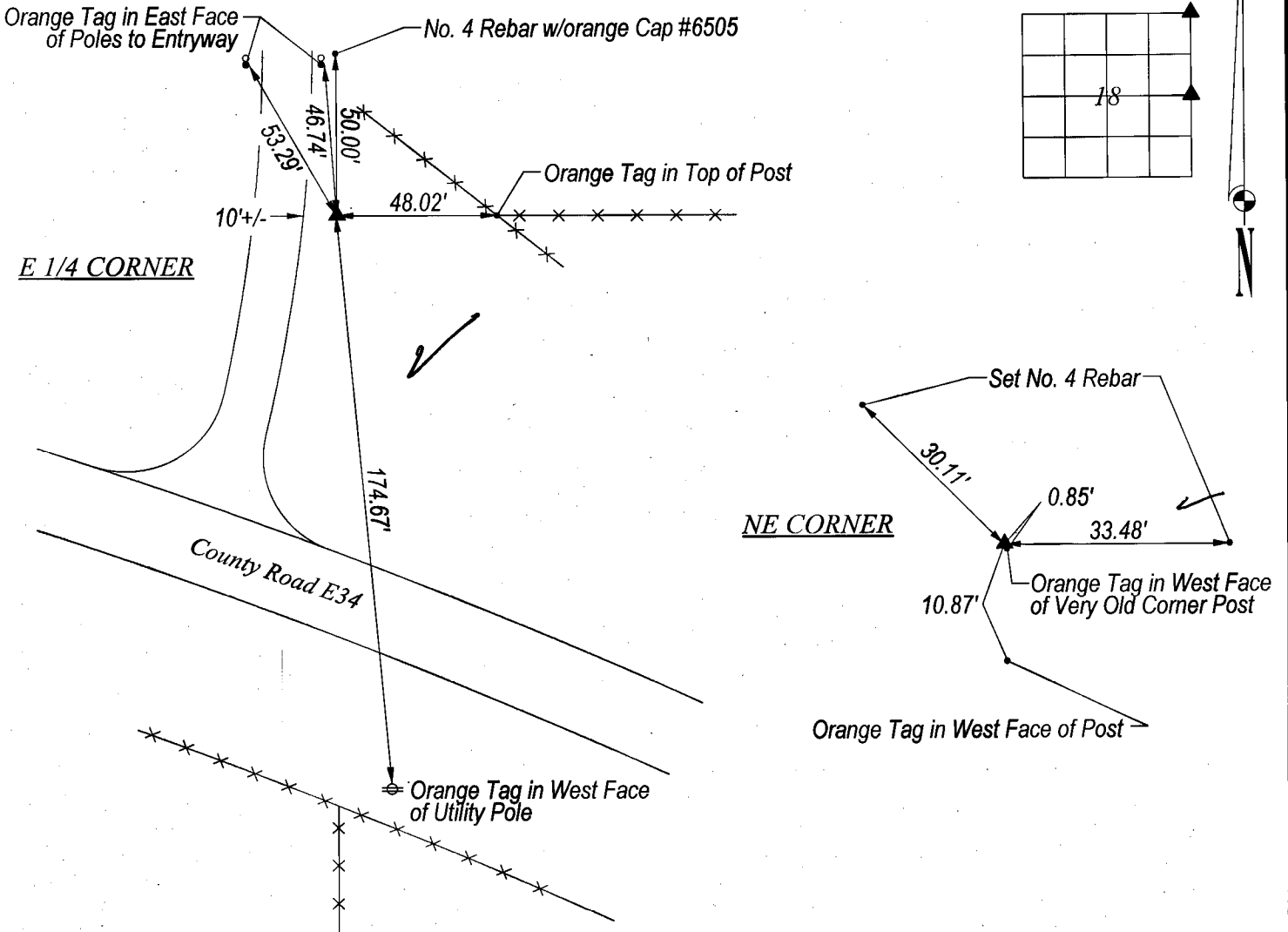
THIS CERTIFICATE IS FILED TO CORRECT
TOWNSHIP NO. ON 1999 4309

E 1/4 CORNER: FOUND NO. 4 REBAR W/RED CAP #11954 (3.7' DEEP) AS PER BOOK 415 PAGE 26, SET NO. 4 REBAR W/ORANGE CAP #6505 ABOVE.

NE CORNER: FOUND NO. 4 REBAR W/ORANGE FLAGGING NORTH OF VERY OLD CORNER POST.

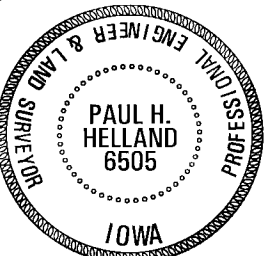
PLAN VIEW

(SHOW A MINIMUM OF THREE REFERENCE TIES TO DURABLE PHYSICAL OBJECTS, RELEVANT MONUMENTS AND PHYSICAL CONDITIONS THAT WILL ENABLE RECOVERY OF THE CORNER.)



HELLAND ENGINEERING & SURVEYING, LTD.
1107 Technology Parkway
Cedar Falls, Iowa 50613-6951
(319)-266-0161

FILE NAME: 99-279C2.DRG



I hereby certify that this land surveying document was prepared and the related survey work was performed by me or under my direct personal supervision and that I am a duly licensed Land Surveyor under the laws of the State of Iowa.

Paul H. Helland 12/31/99
Paul H. Helland
License Number 6505
My license renewal date is December 31, 1999.
All pages or sheets are covered by this seal except:.

LIST CORNERS TO BE INDEXED			
CORNER	SECTION	TOWNSHIP	RANGE
E 1/4 CORNER	18	84N	4W
NE CORNER	18	84N	4W