

COPY

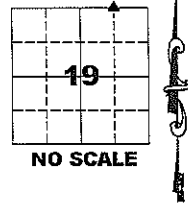
Jones County  
 Marie Krutzfield, Recorder  
**Fee Book 2010 1294**  
 05/19/2010 @0416PM  
 ZSC SEC COR CERT  
 Book: Page: # Pages: 2  
 Total Fees: \$0.00

PREPARED BY  
**CLARENCE J. WALTON, JONES COUNTY ENGINEER'S OFFICE, 19501 HWY. 64, ANAMOSA, IOWA, 52205 (319) 462-3785**

**COVER SHEET**  
**UNITED STATES PUBLIC LAND SURVEY CORNER CERTIFICATE**  
**LAND SURVEY MONUMENTS SITUATED IN SECTION 19, TOWNSHIP 84 NORTH,**  
**RANGE 4 WEST OF THE 5TH PRINCIPAL MERIDIAN, JONES COUNTY, IOWA.**

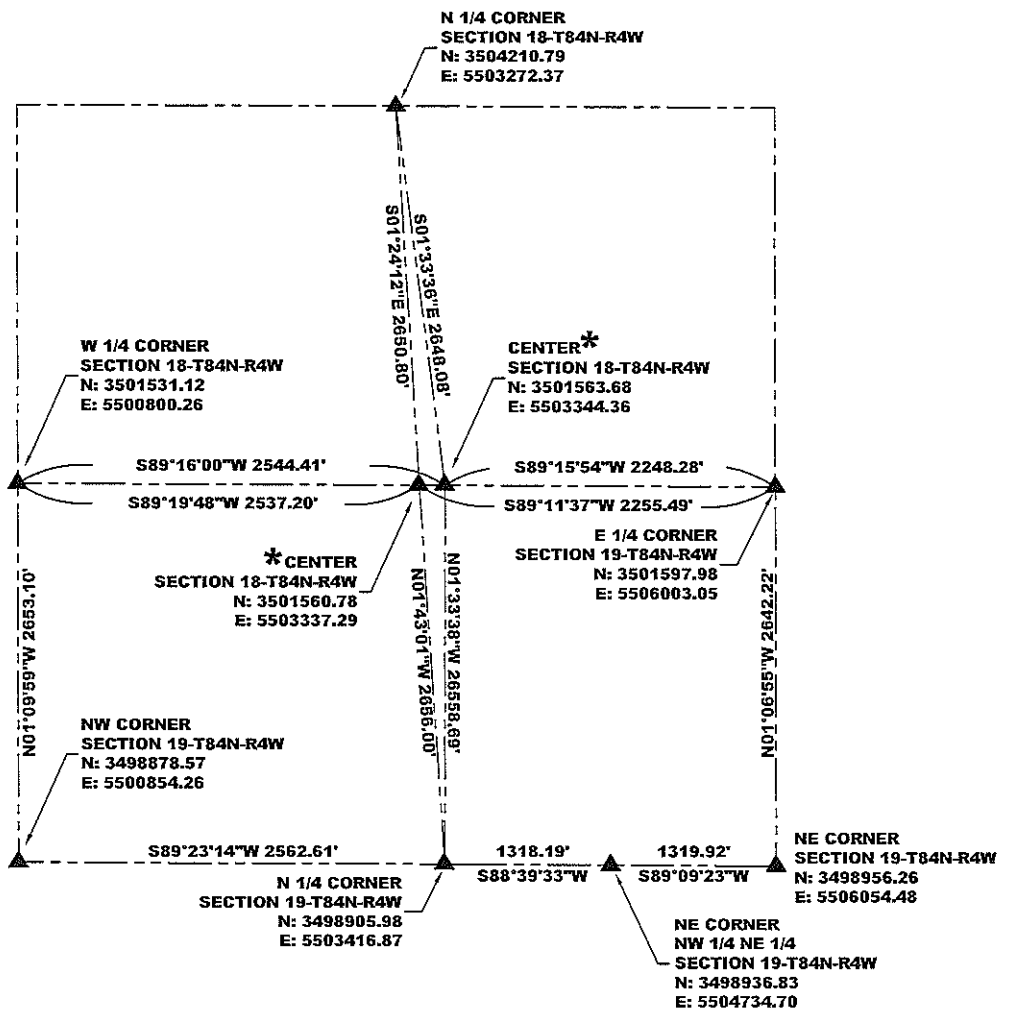
STATE PLANE COORDINATE  
 NAD 83 IOWA NORTH  
 N 3496521.55  
 E 5514058.80

CORNER SECTION TOWNSHIP RANGE  
 NE CORNER 19 84N 4W  
 NW 1/4 NE 1/4



**NOTES:**

- 1) THE STATE PLANE COORDINATES AS SHOWN ARE FOR CONVENIENCE ONLY. THE TIES AS SHOWN SHOULD BE USED TO REPLACE THE CORNER, IF DESTROYED.
- 2) COORDINATES AS SHOWN ARE GRID COORDINATES AND BASED ON JONES COUNTY G.P.S. CONTROL NETWORK WHICH IN TURN IS BASED ON NAD 83 IOWA NORTH DATUM.
- 3) BASIS OF BEARINGS ARE BASED ON JONES COUNTY G.P.S. CONTROL NETWORK.
- 4) ALL MEASUREMENTS ARE IN FEET AND DECIMALS THEREOF. DISTANCES ON THIS COVER SHEET ARE GRID DISTANCES.



**LEGEND**

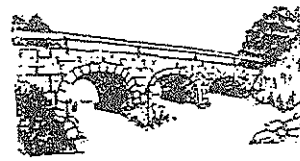
- ▲ FOUND SECTION CORNER
- OPC ORANGE PLASTIC CAP
- OPC ORANGE PLASTIC CAP
- ( ) RECORDED AS
- \* SEE NARRATIVE ON PAGE 2 OF 2 PERTAINING TO THE TWO CENTERS OF SECTION

**PAGE 1 of 2**



I hereby certify that this land surveying document and the related survey work was performed by me or under my direct personal supervision and that I am a duly registered Land Surveyor under the laws of the State of Iowa.  
 Signed: *Clarence J. Walton* 5/19/10  
 Clarence J. Walton, L.S.  
 My Registration Renewal Date is December 31, 2011  
 Iowa License Number 11310  
 Pages or sheets covered by this seal: PAGE 1 of 2.

**JONES COUNTY ENGINEER'S OFFICE**



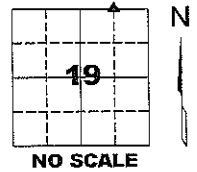
19501 HWY. 64, ANAMOSA, IOWA 52205  
 (319) 462-3785

# UNITED STATES PUBLIC LAND SURVEY CORNER CERTIFICATE

LAND SURVEY MONUMENTS SITUATED IN SECTION 19, TOWNSHIP 84 NORTH,  
 RANGE 4 WEST OF THE 5TH PRINCIPAL MERIDIAN, JONES COUNTY, IOWA.

STATE PLANE COORDINATE  
 NAD 83 IOWA NORTH  
 N 3498936.83  
 E 5504734.70

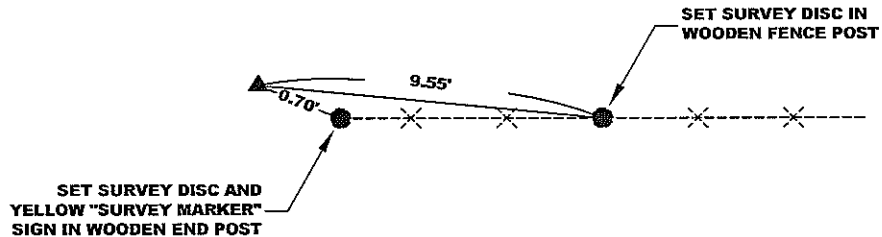
CORNER SECTION TOWNSHIP RANGE  
 NE CORNER 19 T84N R4W  
 NW 1/4 NE 1/4



NOTES:

- 1) THE STATE PLANE COORDINATES AS SHOWN ARE FOR CONVENIENCE ONLY. THE TIES AS SHOWN SHOULD BE USED TO REPLACE THE CORNER, IF DESTROYED.
- 2) COORDINATES AS SHOWN ARE GRID COORDINATES AND BASED ON JONES COUNTY G.P.S. CONTROL NETWORK WHICH IN TURN IS BASED ON NAD 83 IOWA NORTH DATUM.
- 3) ALL MEASUREMENTS ARE IN FEET AND DECIMALS THEREOF.

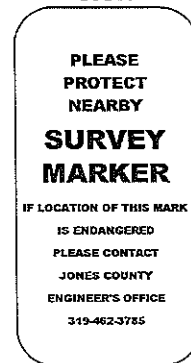
### CULTIVATED FIELD



CULTIVATED FIELD

CULTIVATED FIELD

#### "SURVEY MARKER" SIGN



SURVEY DISC

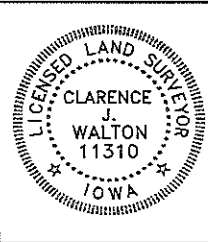


PREVIOUSLY RECORDED IN N/A

PAGE 2 of 2

MONUMENT DESCRIPTION AND HOW ESTABLISHED FOUND 1/2" REBAR WITH ORANGE PLASTIC CAP "MOHN", NUMBER OBLITERATED, 3" BELOW PRESENT GROUND SURFACE AT WEST EDGE OF WOODEN END POST OF FENCE RUNNING TO EAST. SET YELLOW "SURVEY MARKER" SIGN ON WOODEN END POST. NO OTHER TIES OTHER THAN THOSE SHOWN ARE IN NEAR PROXIMITY. FARMING PRACTICES MAY LEAD TO COMPLETE REMOVAL OF EXISTING FENCE LINE AND MONUMENT. THEREFORE, WE TIED IN NEARBY SECTION CORNERS AND PROVIDED COORDINATES TO AID IN RESTORATION IF CORNER IS REMOVED. THERE ARE 2 CENTERS OF SECTION OF RECORD, ONE IN BOOK 415, PAGE 26 AND THE OTHER IN RECORDER'S DOCUMENT 1999 4354; BOTH IN THE JONES COUNTY, IOWA RECORDER'S OFFICE.

FIELD BOOK 378, PAGE 79 DATE OF SURVEY: 4/14/2010



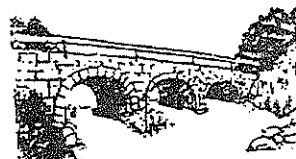
I hereby certify that this land surveying document and the related survey work was performed by me or under my direct personal supervision and that I am a duly registered Land Surveyor under the laws of the State of Iowa.  
 Signed: *Clarence J. Walton* 5/19/10  
 Clarence J. Walton, L.S.  
 My Registration Renewal Date is December 31, 2011  
 Iowa License Number 11310  
 Pages or sheets covered by this seal: PAGE 2 of 2.

- A. THERE IS NO CERTIFICATE FOR THE CORNER ON FILE WITH THE RECORDER OF THE COUNTY IN WHICH THE CORNER IS LOCATED.
- B. THE CORNER MONUMENT HAS BEEN REPLACED OR MODIFIED.
- C. THE SURVEYOR IN RESPONSIBLE CHARGE OF THE LAND SURVEYING ACCEPTS A CORNER POSITION THAT DIFFERS FROM THAT SHOWN IN IN THE PUBLIC RECORDS OF THE COUNTY IN WHICH THE CORNER IS LOCATED.
- D. THE REFERENCE TIES REFERRED TO IN AN EXISTING PUBLIC RECORD NO LONGER EXIST.

#### CORNERS TO BE INDEXED

CORNER	SECTION	TOWNSHIP	RANGE
NE CORNER	19	84N	4W
NW 1/4 NE 1/4	19	84N	4W
NW CORNER	19	84N	4W
NE 1/4 NE 1/4	18	84N	4W
SW CORNER	18	84N	4W
SE 1/4 SE 1/4	18	84N	4W
SE CORNER	18	84N	4W
SW 1/4 SE 1/4	18	84N	4W

#### JONES COUNTY ENGINEER'S OFFICE



19501 HWY. 64, ANAMOSA, IOWA 52205  
 (319) 462-3785