

44

3229
FILED
RECORDERS OFFICE
JONES COUNTY IOWA

96 APR 22 AM 10:39

BOOK 398 PAGE 44
LINDA J. BENDIXEN
RECORDER *ll.ogpl*

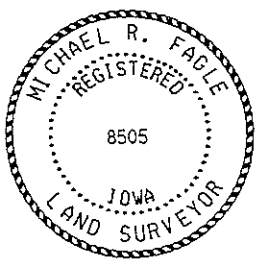
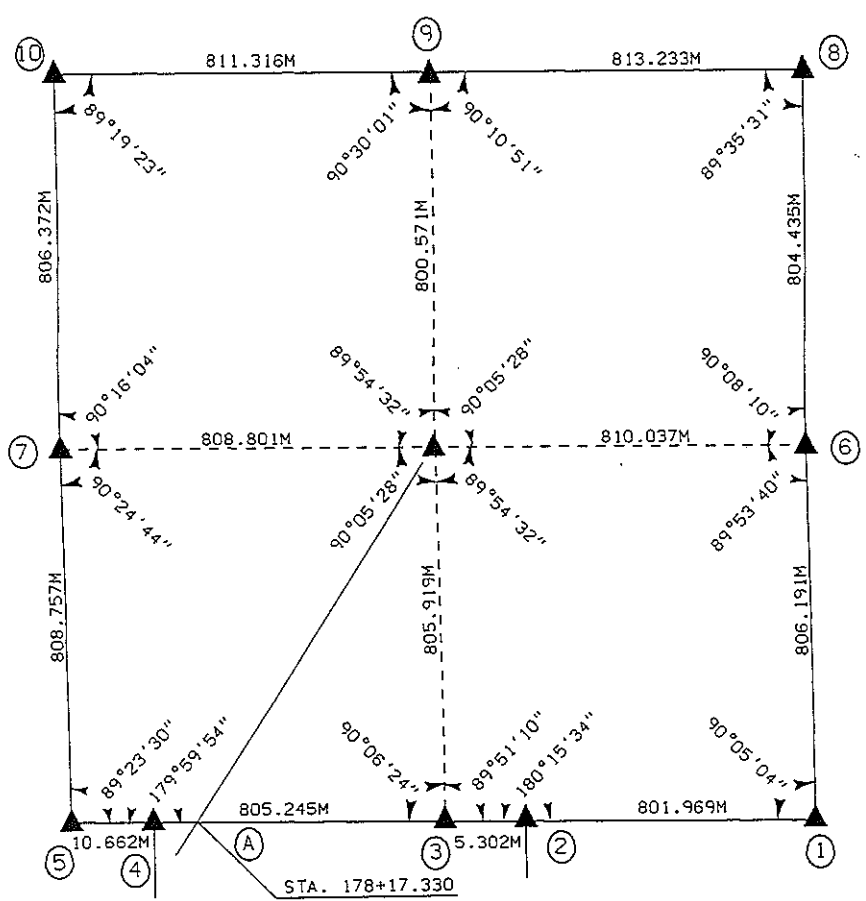
RUST ENVIRONMENT & INFRASTRUCTURE 501 SYCAMORE STREET WATERLOO, IOWA 50703 1-319-232-653

UNITED STATES PUBLIC SECTION CORNER CERTIFICATION
AND LAND CORNER SURVEY
SECTION 36 T-85N R-4W

MADE FOR
IOWA DEPARTMENT OF TRANSPORTATION FOR THE PURPOSE OF
RIGHT OF WAY DESCRIPTIONS ON PRIMARY ROAD No. U.S. 151

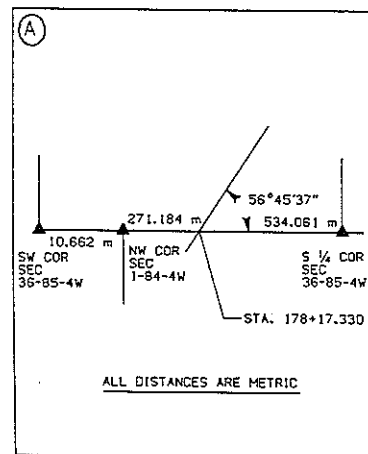
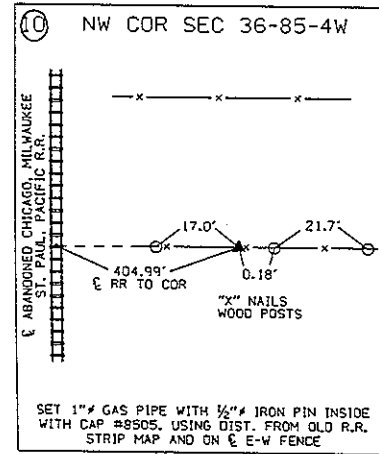
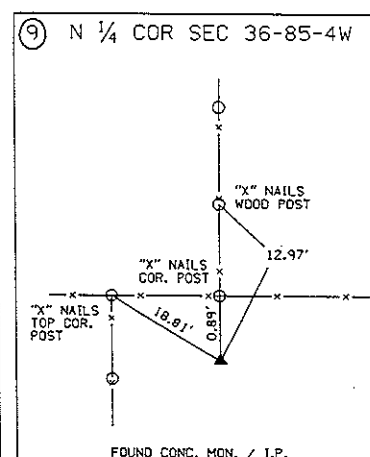
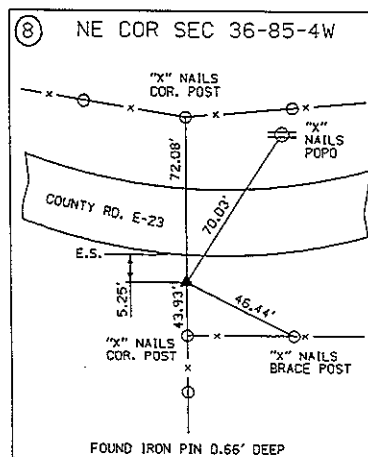
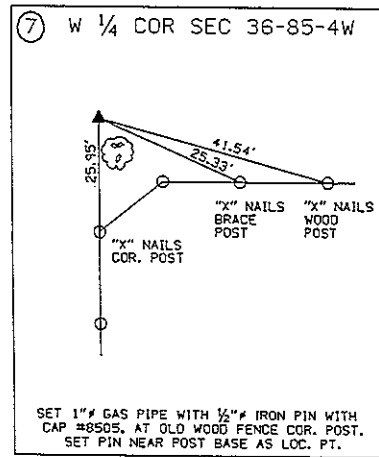
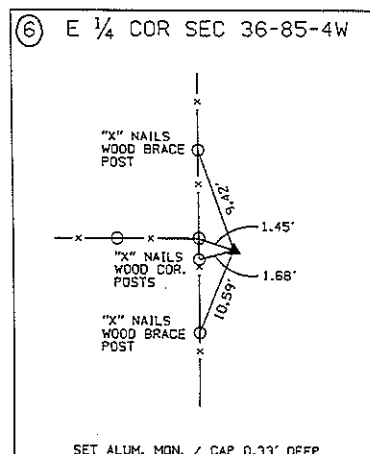
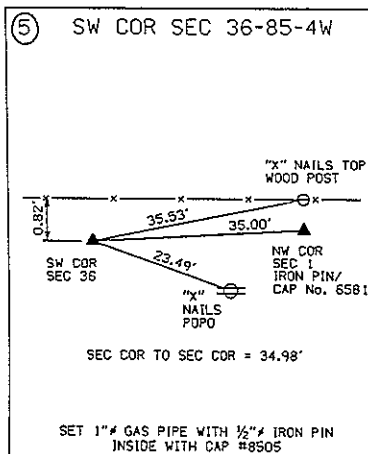
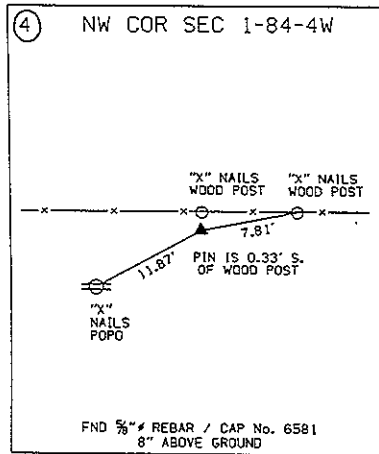
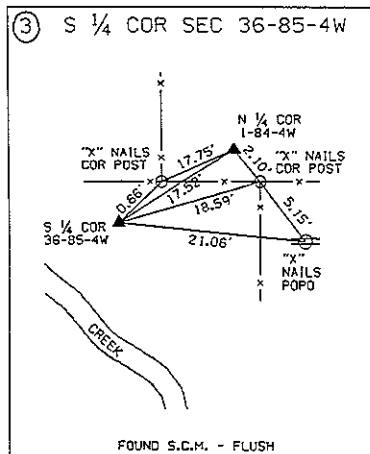
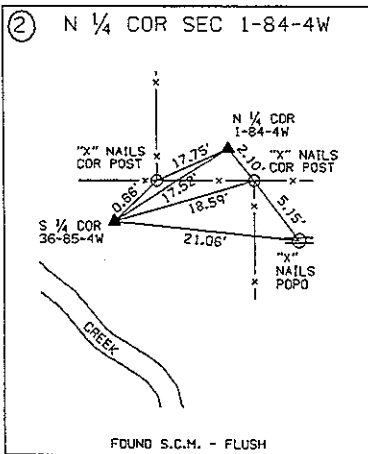
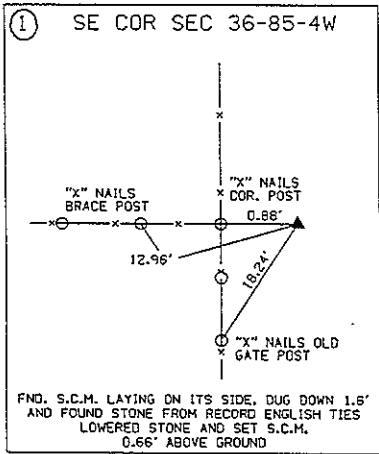
MADE BY
MICHAEL R. FAGLE R.L.S. No. 8505
JONES COUNTY, IOWA NHS-151-3(84)--19-57
APRIL 1994 THRU AUGUST 1995

ALL DISTANCES WERE CAREFULLY MEASURED AND MAY NOT AGREE WITH ROAD SURVEY STATIONING



I hereby certify that this land surveying document was prepared by me or under my direct personal supervision and that I am a duly Registered Land Surveyor under the laws of the State of Iowa.
Signature: *Michael R Fagle*
Name: MICHAEL R. FAGLE, L.S.
Date 4-18-1996 Reg No. 8505
My registration renewal date is December 31, 1996

UNITED STATES PUBLIC SECTION CORNER CERTIFICATION
 AND LAND CORNER SURVEY
 SECTION 36 T-85N R-4W



ALL TIES ARE ENGLISH UNLESS OTHERWISE NOTED

Instrument #: 2016-3617
 12/21/2016 10:10:13 AM Total Pages: 1
 ZSC SECTION CORNER CERTIFICATE
 Recording Fee: \$7.00 Transfer Tax: \$0
 Sheri L. Jones, Recorder, Jones County Iowa



RETURN TO &

PREPARED BY: LEO P. BONIFAZI SCHNOOR-BONIFAZI ENGINEERING & SURVEYING LC, 431 FIFTH AVENUE SW, CEDAR RAPIDS, IA 52404 319-298-8888

UNITED STATES PUBLIC LAND SURVEY CORNER CERTIFICATE

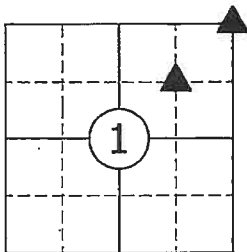
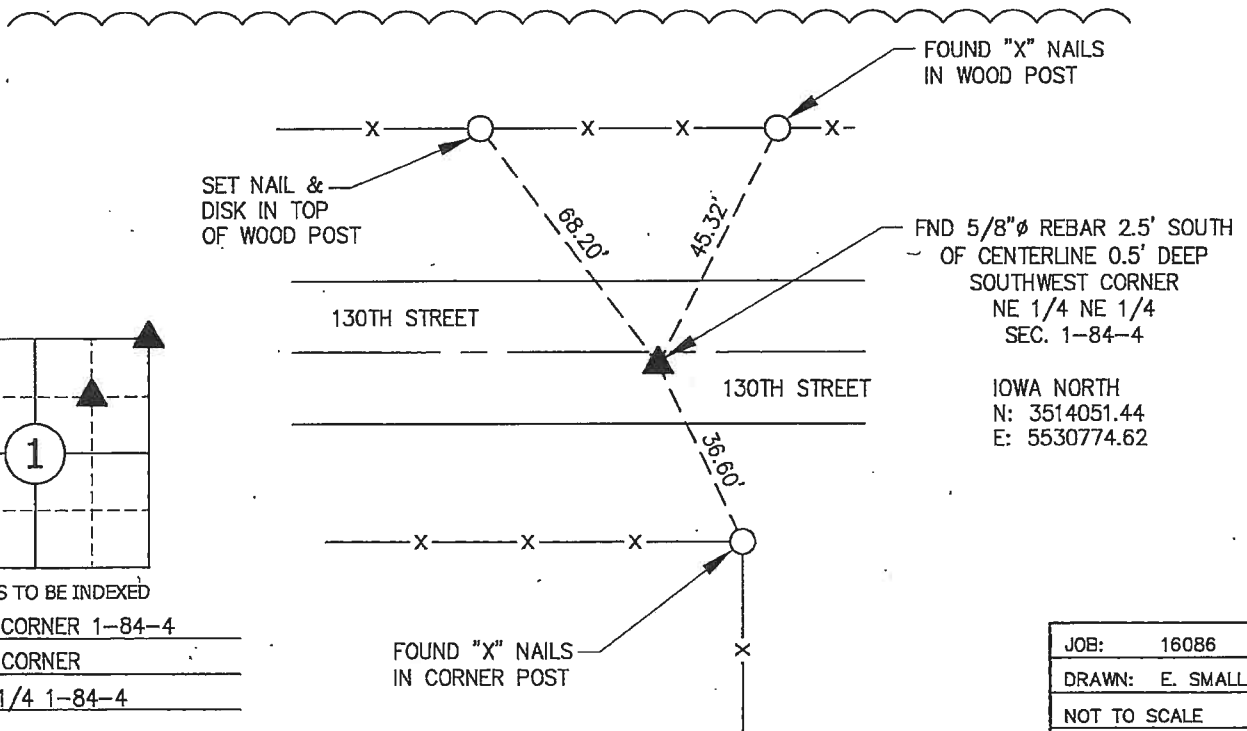
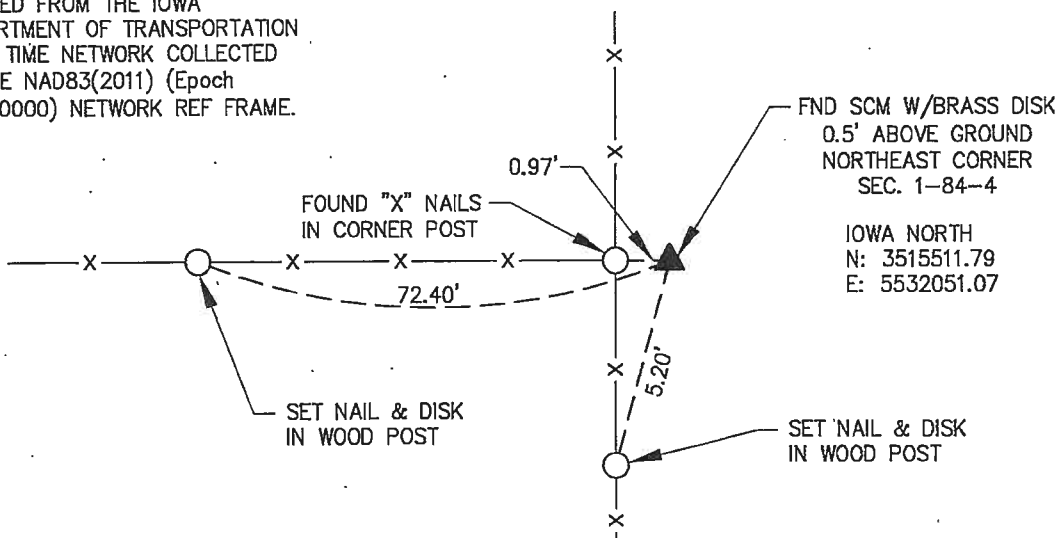
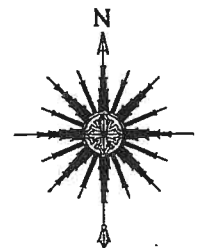
Land Survey Monuments Situated in Section 1, Township 84 North, Range 4 West of the Fifth Principal Meridian, JONES County, Iowa.

Reason for filing: a. No certificate of record found. b. Monument or ties found differ from record. c. Replaced section corner.

NORTHEAST CORNER – FOUND A STANDARD CONCRETE MONUMENT WITH BRASS DISK 0.5' ABOVE GROUND USING A CORNER CERTIFICATE RECORDED IN BOOK 389, PAGE 94 AT THE COUNTY RECORDER'S OFFICE. 1 TIE REMAINED. SET 2 ADDITIONAL TIES AS SHOWN BELOW.

SW CORNER NE 1/4 NE 1/4 – FOUND 5/8"Ø REBAR 2.50' FEET SOUTH OF CENTERLINE OF 130TH STREET 0.50' DEEP USING A CORNER CERTIFICATE RECORDED IN BOOK 365, PAGE 21 AT THE COUNTY RECORDER'S OFFICE. 2 TIES REMAINED. SET 1 ADDITIONAL TIE AS SHOWN BELOW.

COORDINATES LISTED HEREON ARE DERIVED FROM THE IOWA DEPARTMENT OF TRANSPORTATION REAL TIME NETWORK COLLECTED IN THE NAD83(2011) (Epoch 2010.0000) NETWORK REF FRAME.



CORNERS TO BE INDEXED

NORTHEAST CORNER 1-84-4

SOUTHWEST CORNER

NE 1/4 NE 1/4 1-84-4

JOB:	16086
DRAWN:	E. SMALL
NOT TO SCALE	
DATE:	12/20/2016



I HEREBY CERTIFY THAT THIS LAND SURVEYING DOCUMENT WAS PREPARED AND THE RELATED SURVEY WORK WAS PERFORMED BY ME OR UNDER MY DIRECT PERSONAL SUPERVISION AND THAT I AM A DULY LICENSED PROFESSIONAL LAND SURVEYOR UNDER THE LAWS OF THE STATE OF IOWA.

SIGNATURE: *[Signature]* DATE: 12.20.16
 LEO P. BONIFAZI
 LICENSE NO. 13480
 SHEETS COVERED BY THIS SEAL: THIS SHEET ONLY

MY LICENSE RENEWAL DATE IS DECEMBER 31, 2017

SCHNOOR-BONIFAZI ENGINEERING & SURVEYING, LC
 431 FIFTH AVENUE SW
 CEDAR RAPIDS, IA 52404
 (319) 298-8888 (PHONE)
 s-b-engineering.com

Schnoor Bonifazi
 Engineering & Surveying

THIS IS NOT A CERTIFICATION

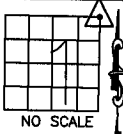
JONES COUNTY ENGINEER'S OFFICE, 19501 HWY. 64, ANAMOSA, IOWA, 52205 (319)462-3785

UNITED STATES PUBLIC LAND SURVEY CORNER CERTIFICATE

LAND SURVEY MONUMENTS SITUATED IN SECTION 1, TOWNSHIP 84 NORTH, RANGE 4 WEST OF THE 5TH P.M., JONES COUNTY, IOWA

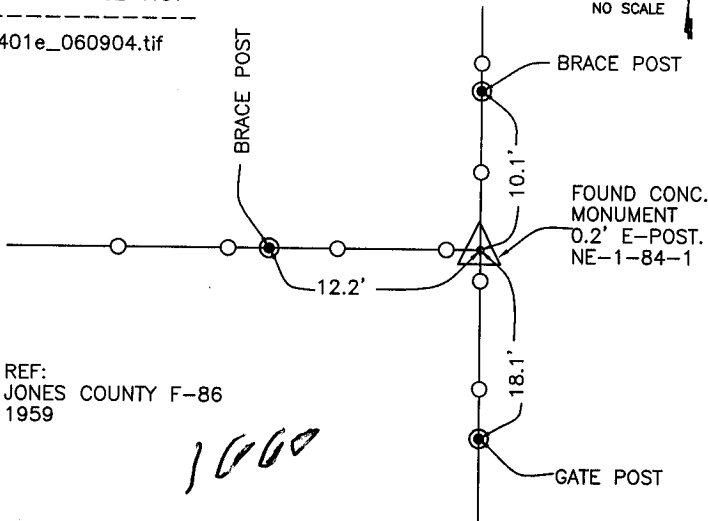
CORNERS TO BE INDEXED

CORNER SECTION TOWNSHIP RANGE
NORTHEAST 1 84N 3W



OFFICE FILE NO. _____

84401e_060904.tif



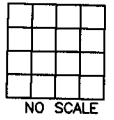
REF:
JONES COUNTY F-86
1959

PREVIOUSLY RECORDED IN BOOK _____, PAGE _____
MONUMENT DESCRIPTION AND HOW ESTABLISHED FOUND

CONCRETE MONUMENT 0.2' EAST OF CORNER POST. TIES AS INDICATED. (1959) NORTHEAST CORNER, SECTION 1, TOWNSHIP 84 NORTH, RANGE 4 WEST OF THE 5TH PRINCIPAL MERIDIAN, JONES COUNTY, IOWA.

CORNERS TO BE INDEXED

CORNER SECTION TOWNSHIP RANGE

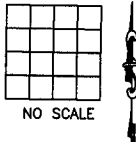


OFFICE FILE NO. _____

PREVIOUSLY RECORDED IN BOOK _____, PAGE _____
MONUMENT DESCRIPTION AND HOW ESTABLISHED _____

CORNERS TO BE INDEXED

CORNER SECTION TOWNSHIP RANGE

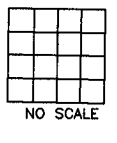


OFFICE FILE NO. _____

PREVIOUSLY RECORDED IN BOOK _____, PAGE _____
MONUMENT DESCRIPTION AND HOW ESTABLISHED _____

CORNERS TO BE INDEXED

CORNER SECTION TOWNSHIP RANGE



OFFICE FILE NO. _____

PREVIOUSLY RECORDED IN BOOK _____, PAGE _____
MONUMENT DESCRIPTION AND HOW ESTABLISHED _____

~~I hereby declare that this plat, survey or report was made by me or under my direct personal supervision and that I am a duly registered Land Surveyor under the laws of the State of Iowa.~~

Signed: _____

SEAL

JONES COUNTY ENGINEER'S OFFICE

19501 HWY. 64,
ANAMOSA, IOWA,
52205 (319)462-3785

A