

Marie Krutzfield, Recorder
Jones County, Iowa

—PREPARED BY AND RETURN TO: MMS CONSULTANTS, INC. 5741 C STREET SW STE C, CEDAR RAPIDS, IOWA 52404—

U.S. PUBLIC LAND SURVEY CORNER CERTIFICATE

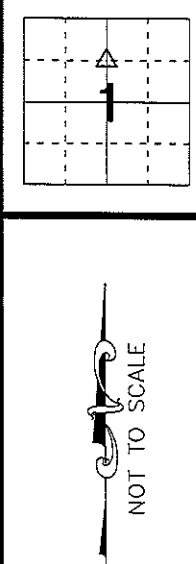
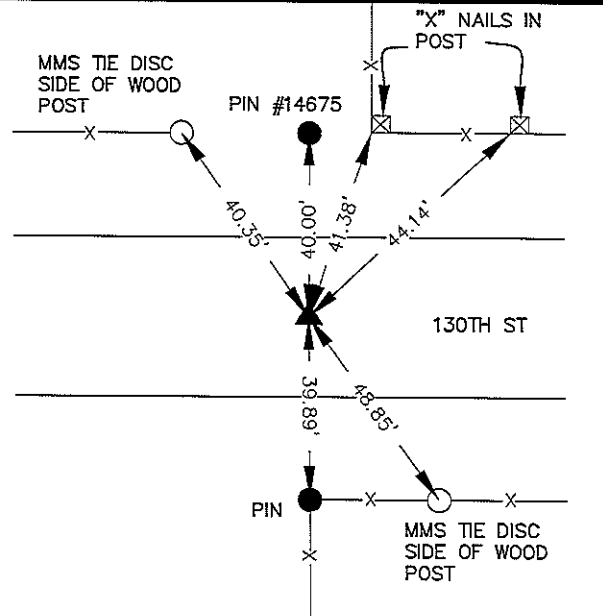
FOR LAND SURVEY MONUMENTS SITUATED IN SECTION 1, TOWNSHIP 84 NORTH, RANGE 4 WEST, OF THE FIFTH PRINCIPAL MERIDIAN, JONES COUNTY COUNTY, IOWA

REASON FOR PREPARING CERTIFICATE:

- A) THERE IS NO CERTIFICATE FOR THE CORNER ON FILE WITH THE RECORDER.
- B) CORNER FOUND DIFFERS FROM PREVIOUSLY RECORDED CERTIFICATE RECORDED IN BOOK , AT PAGE .

RECOVERY TIE DRAWING

SE CORNER NE1/4, NW1/4



MONUMENT DESCRIPTION AND REMARKS :

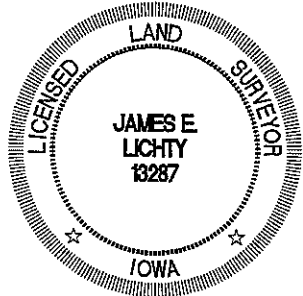
SET "MAG" NAIL IN ASPHALT SURFACE AT THE RECORDED LOCATION OBTAINED FROM FAWN CREEK ESTATES ADDITION AS RECORDED IN BOOK N AT PAGE 89 OF THE RECORDS OF THE JONES COUNTY RECORDER'S OFFICE.

MONUMENT DESCRIPTION AND REMARKS :

I hereby certify that this land surveying document was prepared and the related survey work was performed by me or under my direct personal supervision and that I am a duly licensed Land Surveyor under the laws of the State of Iowa.

James E. Lichty 9/3 20 08
 JAMES E. LICHTY PLS Iowa Lic. No. 13287
 My license renewal date is December 31, 20 08.

COPY



Drawn by: JK Scale: NTS
 Checked by: JEL Date: 06/17/08
 Field Book: 43/864 Project No: CR 7171006

U.S. PUBLIC LAND SURVEY
 CORNER CERTIFICATE
 PLAT OF SURVEY
 PARCEL 2008-52 AND 2008-53
 JONES COUNTY, IOWA

MMS CONSULTANTS, INC.
 IOWA CITY, IOWA 52240 (319) 351-8282
 CEDAR RAPIDS, IOWA 52404 (319) 841-5188
 www.mmsconsultants.net



Date _____ Revision _____