

**UNITED STATES PUBLIC LAND SURVEY CORNER CERTIFICATE  
OF**

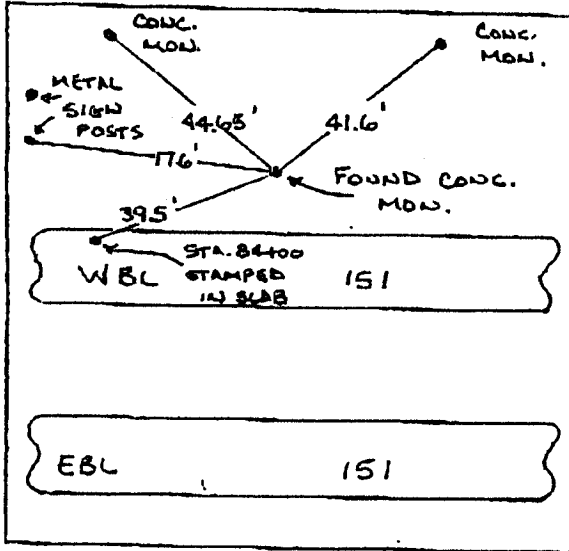
LAND SURVEY MONUMENTS SITUATED IN SECTION 20, TOWNSHIP 84, RANGE 4W, OF THE 5TH PRINCIPAL MERIDIAN JONES COUNTY IOWA  
PREVIOUSLY RECORDED IN \_\_\_\_\_ IN COUNTY RECORDER'S OFFICE

(Show reason for preparing this certificate, the evidence and detailed procedures used in establishing the corner positions and monumentation found or placed.)

MONUMENT DESCRIPTION AND REMARKS: E 1/4 CORNER SEC. 20-84-4W  
FOUND CONC. MON.

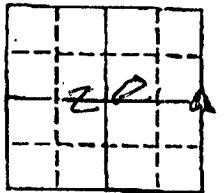
**PLAN - VIEW**

(Show a minimum of three reference ties to durable physical objects, relevant monuments and physical conditions that will enable recovery of the corner.)



134 ✓ ✓

84420-090204.tif



ALL DISTANCES  
SLOPE CHAINED "

I hereby certify that the survey work was completed and this certificate was prepared by me or under my direct personal supervision and that I am a duly registered land surveyor under the laws of the state of Iowa.

LAND CORNERS TO BE RECORDED			
Corners	Section	Twp.	Range
E 1/4	20	84	4W

8002

MANCHESTER CONST

09/02/04 THU 16:16 FAX 319 927 2474

FROM IDOT  
9.02.04

# SECTION CORNER CERTIFICATE

OF  
 LAND SURVEY MONUMENTS SITUATED IN SECTION 21, TOWNSHIP 84 NORTH,  
 RANGE 4 WEST, OF THE FIFTH PRINCIPAL MERIDIAN, Jones, COUNTY, IOWA.

PREVIOUSLY RECORDED IN BOOK \_\_\_\_\_ AT PAGE \_\_\_\_\_

FOR RECORDER'S USE

**REASON FOR PREPARING CERTIFICATE:**

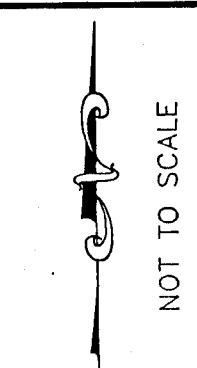
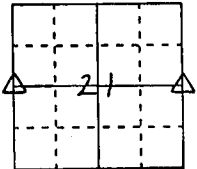
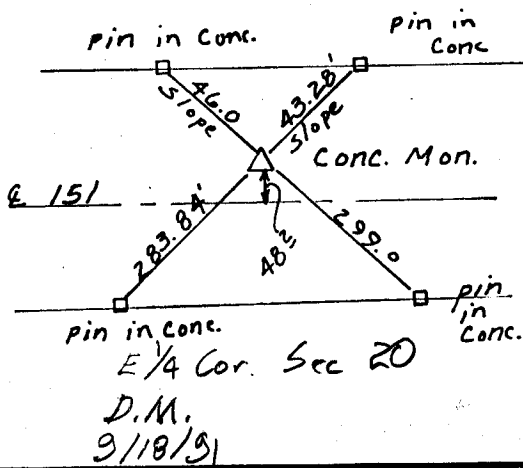
- A) THERE IS NO CERTIFICATE FOR THE CORNER ON FILE WITH THE RECORDER OF THE COUNTY IN WHICH THE CORNER IS LOCATED.
- B) CORNER POSITION DIFFERS FROM THAT SHOWN IN THE PUBLIC RECORDS OF THE COUNTY IN WHICH THE CORNER IS LOCATED.
- C) THE CORNER MONUMENT HAS BEEN REPLACED OR MODIFIED.
- D) THE REFERENCE TIES REFERRED TO IN AN EXISTING PUBLIC RECORD ARE INCORRECT.

**MONUMENT DESCRIPTION AND REMARKS :**

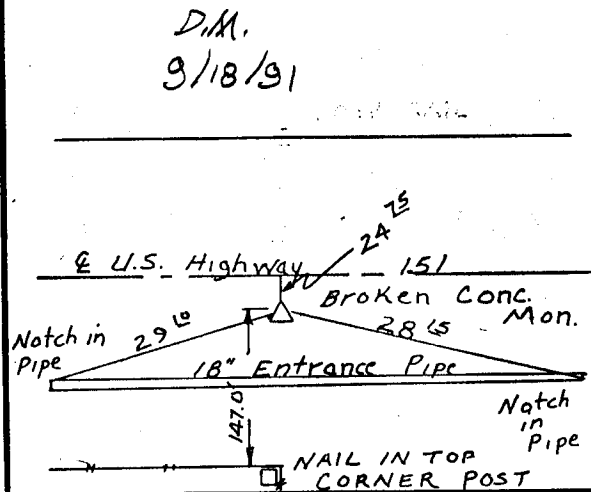
W 1/4 Found Conc. Mon. w 1/2" Pin 8" above ground  
E 1/4 Found Conc. Mon broken, County Engr. ties

## RECOVERY TIE DRAWING

W 1/4 Corner Sec. 21-T84N-R4W



E 1/4 Corner Sec. 21-T84N-R4W



I, GLEN D. MEISNER, CERTIFY THAT THE CORNER LOCATION(S) SHOWN ON THIS RECORD WERE DETERMINED BY ME OR UNDER MY DIRECTION AND CONTROL AND THAT THIS U.S. PUBLIC LAND SURVEY MONUMENT RECORD IS CORRECT AND COMPLETE TO THE BEST OF MY KNOWLEDGE AND BELIEF.

Glen D. Meisner 8-29-91  
 GLEN D. MEISNER L.S. NO 8165 DATE

D Z E C I M E L	△ GOVERNMENT CORNER ○ 5/8" THE PIN SET --- CENTERLINE -x-x- EXISTING FENCE LINE - - - - R.O.W. LINE	SHEET TITLE: <b>U.S. PUBLIC LAND SURVEY RECORD</b> PROJECT TITLE:	<b>HALL AND HALL ENGINEERS, INC.</b> 226 29TH STREET DRIVE S.E. CEDAR RAPIDS, IOWA 52403 319-362-9548
	DWN <b>GDM</b> KIC APP DATE	SCALE FNO PROJ <b>4485</b>	

addn. no 2991 844210-062991